

# INDIA GoodHomes

A Times of India Publication  
VOLUME 13 ISSUE 09 DECEMBER 2020

GOOD DESIGN CHANGES EVERYTHING

@goodhomesmagazine  
@goodhomesmagazineindia  
@goodhomesindia

## OUR SECRET SANTAS

Janki Kirloskar  
Sweta and Ajay Arya  
Sanjyt Syngh  
The Needle Crafter  
Villas of Mint  
And more...

## Celebrating Christmas

TIME YOU TAKE  
THE PARTY OUTDOORS

DISCOVER  
THE FUTURE  
OF DESIGN

TRENDS, MATERIALS  
AND IDEAS  
THAT WILL SHAPE  
THE WAY WE LIVE

## THE LUST LIST OF 2020

From crimson and  
gold, to botanicals  
and handmade  
designs

12TH ANNIVERSARY SPECIAL



# CONTENTS

December 2020



“**E**ssentialism is the new Minimalism,” said Huzefa Rangwala of MuseLab when I quizzed him about the Trends that will dominate the year 2021. I was amazed at how succinctly he summed up the solution to the mammoth crisis we are facing at the moment. This seems to be the unanimous design voice. 2020 in many ways has accelerated our shift towards a more mindful way of living. And the Trends Forecast for the year 2021 will elucidate this in more ways than one. There’s a need to rethink and re-evaluate the way we design and consume, and now is the time to make the change.

While we face a grim truth and work towards a better future — there’s still reason enough to celebrate. It’s Christmas after all — the Season of Joy. Just like that, we feel a lot more optimistic and positive than we had the entire year.

Our beautiful cover styled by Villas of Mint is a reflection of the celebrations — a little subdued, yet beautiful and warm. We hope you love it as much as we do.

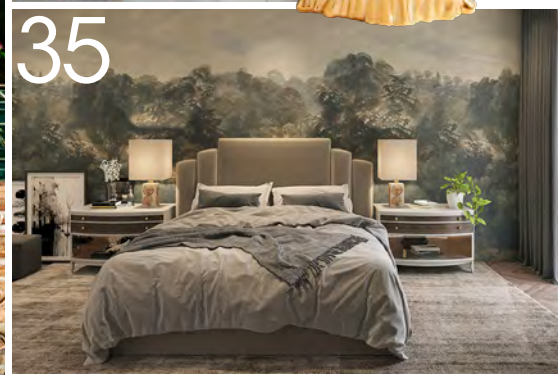
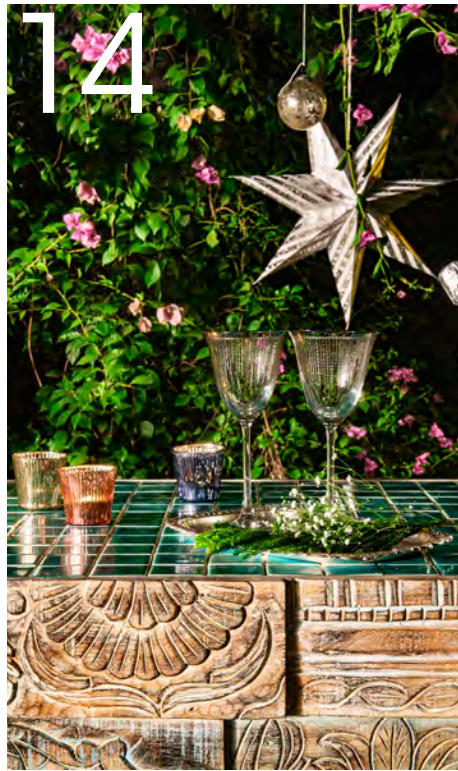
As usual, we take you to some of the most beautiful homes in the country!

So...over to you...

Happy Reading!

Merry Christmas and Happy New Year!!

Seema Sreedharan  
Editor



## 06 SHOPPING

- 06 MOODBOARD
- 07 GET THE LOOK
- 08 HOT RIGHT NOW
- 10 PIECE OF THE MONTH
- 11 CUTTING EDGE
- 12 WISHLIST
- 13 LAUNCH PAD

## 14 SPECIAL FEATURE

- 14 ONCE UPON A CHRISTMAS
- 18 THE SEASON OF JOY
- 21 TRENDS FORECAST 2021

## 29 HOMES

- 29 GOING DEEP INTO LUXURY
- 32 ROMANCING THE SEA
- 35 BEYOND DIMENSIONS
- 38 BASKING IN AN AMBER GLOW
- 41 CRISP AND CHIC



### THE COVER

FEATURE AVRIL NOEL D'SOUZA  
CONCEPT & PRODUCTION VILLAS OF MINT  
STYLE BARNITA HALDAR PHOTOGRAPHS ARYA



hindware

GOODBYE WORRIES.  
WELCOME HYGIENE.

PRESENTING

SENsible

RANGE OF SENSOR FAUCETS

Designed for your bathroom and kitchen spaces.



#TouchFreesCarefree

Toll Free No. 1800 200 75 77  
1800 103 75 77

www.hindwarehomes.com



f /hindware

t /hindware\_homes

y /user/hindwarehomes

# NEXT ISSUE

We've never been more excited to usher in the New Year. Step into 2021 like the boss you are. From design that's going to change the world, to resolutions that take the oath to not miss a thing, we've got you covered. Bye, 2020...you won't be missed!



# GoodHomes

**CEO**  
DEEPAK LAMBA

**EDITOR IN CHIEF**  
RONITAA ITALIA

**Editor** Seema Sreedharan  
**Associate Editor** Avril Noel D'souza  
**Senior Features Editor** Tina Thakrar  
**Senior Digital Writer** Nitija Immanuel  
**Senior Editorial Coordinator** Harshal Wesavkar  
**Deputy Art Director** Shalaka Shinde  
**Senior Graphic Designer** Anushree Kumar

**Chief Financial Officer** Subramaniam S.  
**Head Human Resources** Meghna Puthawala  
**Publisher** Joji Varghese  
**Experiential Marketing** Aakash Mishra  
**Content Studio** Vidyut Patra  
**Head Marketing** Priyadarshi Banerjee  
**Head Digital Solutions**  
**Chief Marketing Manager** Ravi Budania

**BUSINESS DIRECTOR**  
SUNIL WUTHOO

## BRAND SOLUTIONS

**WEST**  
**MUMBAI**  
**Vice President**  
- Brand Solutions &  
Business Head  
- Femina Salon & Spa  
Gautam Chopra  
gautam.chopra@wwm.co.in

**PUNE**  
Ekta Dang  
ekta.dang@wwm.co.in  
Aditi Shrivastava  
aditi.shrivastava@wwm.co.in

**AHMEDABAD**  
Kamal Rajput  
kamal.rajput@wwm.co.in

**NORTH**  
**Vice President & Sales Head**  
- Long Format Content  
Anjali Rathor  
anjali.rathor@wwm.co.in

**JAIPUR**  
Pushpesh Sood  
pushpesh.ood@wwm.co.in

**EAST**  
**Assistant Vice President**  
Alka Kakar  
alka.kakar@wwm.co.in

**Bijoy Choudhary**  
bijoy.choudhary@wwm.co.in

**SOUTH**  
**Vice President - South**  
**& Business Head**  
- Femina Tamil  
Pravin Menon  
pravin.menon@wwm.co.in

**CHENNAI**  
Karthik D  
karthik.d@wwm.co.in

## SUBSCRIPTIONS

Asha Kulkarni, Manager Marketing  
asha.kulkarni@wwm.co.in

**Associate General Manager (RMD)**  
Sakshi Kate, sakshi.kate@timesgroup.com

**Editorial Enquiries** goodhomes@wwm.co.in

## FOR SUBSCRIPTIONS

**Online:** mags.timesgroup.com

**SMS:** GHSUB 58888

**Mail:** subscriptions.wwm@wwm.co.in

**Call:** 18001210005  
(All India toll free number)

GoodHomes takes no responsibility for unsolicited photographs or material. All photographs, unless otherwise indicated, are used for illustrative purposes only

For marketing queries, e-mail goodhomes@wwm.co.in, For editorial queries, e-mail goodhomes@wwm.co.in

Printed and published by Joji Varghese on behalf of owners Worldwide Media Pvt Ltd, The Times of India Building, Dr DN Road, Fort, Mumbai 400001, and printed at Rajhans Enterprises, No 134, 4th Main Road, Industrial Town, Rajajinagar, Bengaluru 560044, and published at Worldwide Media Pvt Ltd, The Times of India Building, Dr DN Road, Fort, Mumbai 400001 Processed at Colour Processing, The Times of India Suburban Press, Kandivali, Mumbai 400101

All rights reserved worldwide. Reproducing in any manner without prior written permission prohibited

CIN: U22120MH2003142239





# DOWNLOAD YOUR FAVOURITE MAGAZINES FOR FREE!

Stay Indoors. Stay Safe.



[worldwidemedia.in](http://worldwidemedia.in)





ELLIPSE RANGE OF WALLPAPERS BY UDC HOMES



## BOTANICAL



GUL MOHARLANE



SANS SOUCI



HOUSE OF ATIVA

HEIMARS

Bring the forest home by following the trail of botanical prints for a verdant and inspired interior. Here is a great way to interpret the scenic calm of nature and introduce a delicate freshness. Let's ring in the New Year in the company of botanical prints

FEATURE **AVRIL NOEL D'SOUZA**



HEIMARS

THE YELLOW DWELLING

Click here  
TO READ MORE

Shopping Guide on Pg 44





# Crafted by Hand

Celebrating the raw beauty of artisanal designs and their inimitable charm

FEATURE **AVRIL NOEL D'SOUZA**



**1**  
Wayve console,  
Josmo Studio.



**2**  
Kaluva coffee  
table,  
Esvee Atelier.



**3**  
Aurae table by  
Annkur Khosla,  
Orvi Surfaces.



**4**  
Collar dining  
chairs, Josmo  
Studio.



**8**  
The peacock  
and parrot Surai,  
SR Artefacts.



**5**  
Armchair,  
Ochre at  
Home.



**6**  
Pine needle  
craft table,  
Mangrove  
Collective.



**7**  
Terracotta  
sanitation kit,  
Baaya Design.

Shopping Guide on Pg 44





# THE GOLD RUSH

The perfect fit for those unapologetically-glamorous homes

FEATURE **AVRIL NOEL D'SOUZA**

- 1 Faucet by Bronces Mestre\*, EtreLuxe.
- 2 Trapeze chandelier\*;
- 3 Dusk dome table lamp\*; both from IAAH (It's All About Home).
- 4 Hanging chandelier\*, Beyond Designs.
- 5 Walnut side table\*, MADS Creations.
- 6 Console\*, Beyond Designs.
- 6 XXXX by L'Objet, Emery Studio.
- 7 Gold iron: The golden frustum planter pot with triangular stand by ExclusiveLane, Pepperfry. \*Prices on Request

Shopping Guide on Pg 44





# IT'S CRIMSON SEASON

The deeper, more sultry side of Christmas

FEATURE **AVRIL NOEL D'SOUZA**

1 UFO hanging light\*, Baro Designs. 2 Stool\*, Heimars. 3 Italo Ventania red ceiling fan\*, Anemos. 4 Wardrobe by Cipriani Homood\*, Ottimo. 5 WK Together, by Water Knoll\*, Plusch. 6 Sanluca by Poltrona Frau\*, Etreluxe. 6 Crimson cushion\*, Heimars. 6 Crimson cushion\*, The Yellow Dwelling. \*Prices on Request Shopping Guide on Pg 44



# THE MAGIC OF BAKED EARTH

A design discovery this: We found the perfect perch for all things decor. Inspired by the curvy form of the cactus, this side table is handmade and crafted entirely out of terracotta

FEATURE **AVRIL NOEL D'SOUZA**

## SHOW IT OFF

In her Earth collection, architect Harshita Jhamtani of the eponymous design atelier draws inspiration from the humble cactus to create an interpretation rooted in its context.

This handmade, voluptuous side table is crafted entirely out of terracotta and showcases the versatility of clay.

Harshita's firm is a year old, but her ease with delicate, temperamental materials that go on to create avant-garde forms, reflects her mature design mind.

We love how she explores, experiments and celebrates an au naturel palette, seen here with Cactus.

*Shopping Guide on Pg 44*





# ALL FOR A CUP OF JOE

If coffee were a religion, we would all be fanatics. Here's our line up of coffee machines for its disciples

FEATURE **SEEMA SREEDHARAN**

A perfect combination of sophisticated design, state-of-the-art technology and ease of usage, the De'Longhi PrimaDonna Elite Experience coffee machine is for those who want nothing but the best. The machine lets you make coffee at the perfect temperature, density, colour and taste.



AKG N700

*"If it wasn't for the coffee, I'd have no identifiable personality whatsoever..."*

— David Letterman, American TV personality

## BLACK + DECKER



**USP:** This little machine evenly saturates coffee grounds for rich flavour extraction using optimal water temperatures. It even lets you opt for a slower brewing process for a stronger cup of coffee.

## MORPHY RICHARDS



**USP:** Espresso, cappuccino or latte, this stylish coffee maker lets you choose your preferred brew. And all this at the touch of a single button. And it looks like a million dollars too! What's not to love?

## TECNORA



**USP:** If you like your coffee strong and bitter, we vouch for the double espresso coffee shots Tecnora can make for you. And it makes a creamy latte and a strong cappuccino with equal precision.

## BLACK + DECKER



**USP:** The Mill + Brew coffeemaker comes with a programming panel which allows you to program brew strength, time settings, and an auto brew feature that lets you wake up to fresh coffee every morning.

Shopping Guide on Pg 44



# CHRISTMAS THREADS

Cross-stitching is the passionate dance between fingers and patience, and we salute the dedication it takes to perfect this craft. These darling cocktail napkins by Maitrayee Shukla of The Needle Crafter have our heart. We love the intricate yuletide symbols so delicately sewn into these snow-like squares.

FEATURE **AVRIL NOEL D'SOUZA**



THE NEEDLE CRAFTER







## BE THE BOSS ▲

As working from home becomes the norm, your home office too demands the best. Inspired by the 1960s', the Volver Chair by Visionnaire is the epitome of comfort and sophisticated elegance. Just what your newly appointed home office was missing!



MARKET UPDATE

# Launch Pad

New launches, everything hot, whatever's not.... We tell you first!

FEATURE **SEEMA SREEDHARAN**



## Wall of Charm

Decorating your children's room? Give them the best. Create a room of their dreams, channel their imagination and creativity with this gorgeous range of wallpapers from Thinkcutieful. Go ahead, create a wonderland for your little one!



## Set in Concrete

Eliteearth — The World of Concrete, is a brand obsessed with all things concrete (duh!). Right from jewellery to planters and accent pieces, you can choose from a vast repertoire of concrete products. Our favourite? These minimal washbasins in tinted concrete. Gurpreet Kaur, the founder, says, "We are on a journey to find innovative ways to help people experience sustainable beauty in concrete form."



## Stay in Order ▲

Ajay Arya of Ochre at Home brings geometric flair to your homes. The collection is a playful mix of straight lines, curved shapes and a lot of colours. We are in love with these handcrafted beauties.

Shopping Guide on Pg 44



# Once upon a Christmas

As the year comes to a draw, it's time again to deck our homes with merry tidings. This year, being different, we take the party outdoors to wish you Felice Navidad

FEATURE **AVRIL NOEL D'SOUZA** CONCEPT & PRODUCTION **VILLAS OF MINT**  
STYLE **BARNITA HALDAR** PHOTOGRAPHS **ARYA ARORA**



The Kokomo bar; The grey high bar stools; The Mykonos chandelier; all from Villas of Mint. Champagne glasses, OMA. Glass votives, OMA. Hanging stars, Nicobar. Champagne bucket, Episode.



*Inspired by the twinkling night sky, we've collaborated with Villas of Mint to make our intimate gatherings around the bar a starry affair. We've got stars and tea lights gingerly hanging from branches, and a stunning chandelier to complete the luminous trance. Cheers to family!*



The design of the Kokomo bar drew inspiration from its namesake song by The Beach Boys. Handcrafted in teak wood, this bar by Villas of Mint is an ode to the sand, sun and surf of the easygoing vibe of the beach. The bar is paired with high-back bar stools and a stunning chandelier from the decor brand's catalogue to enhance the carefree vibe.

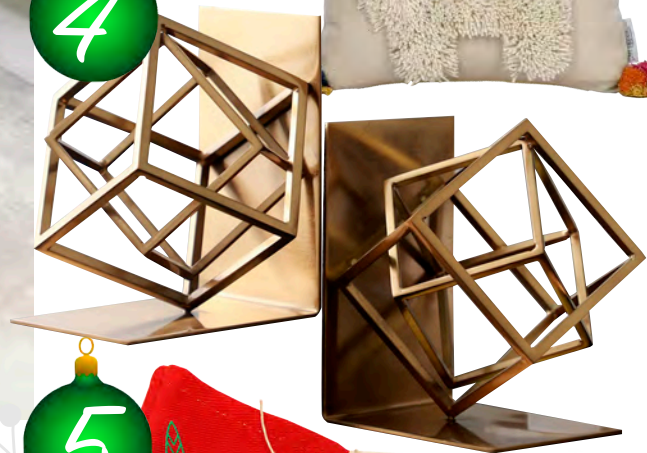


***“Chestnuts roasting on an open fire. Jack Frost nipping at your nose...” is one of our favourite yuletide carols based on which we’ve created the perfect nook outdoors with this day bed to snuggle into and enjoy the festivities. We love everything about this!***



The Balinese day bed was handcrafted by Villas of Mint, as an ode to the pristine beauty of Ubud, Bali. This design has some exquisite and intricate carving on the sides and pillars, while the beautiful checkered open-plan roof adds an element of warmth.





# Deck the Halls

...with vibrant, nostalgic and classic finds. At Christmas, all roads lead home



- 1 Soft furnishings, Sana Furnishings by Suruchi Khanna.
- 2 Reindeer area rug; 3 Lama Christmas cushion; both from Art Age Pvt Ltd.
- 4 Rubick-star bookends, Home Edition.
- 5 Frosty pines napkins, Baro Market.
- 6 Clovel, Tisva lights.
- 7 Star ornaments, Sarita Handa.
- 8 Fragrances by Locherber Milano, Sources Unlimited.

\*ALL PRICES ON REQUEST \*Shopping Guide on Pg 44



# THE SEASON OF *Joy*

There's something about Christmas that fills you with happiness, hope and positivity. That's more than enough reason to celebrate

FEATURE **SEEMA SREEDHARAN**

**JANKI KIRLOSKAR'S CLASSIC TABLESCAPE, SWETA AND AJAY ARYA'S UNCONVENTIONAL DECOR, AND SANJYT SYNGH'S WHIMSICAL STYLE --IT'S HOLIDAY DECORATING WITH OODLES OF STYLE**



**JANKI KIRLOSKAR**

*Founder, Kika Tableware*

"Home is the heart of the holidays. This year, whether you are gathering with your loved ones remotely or in a smaller, more intimate way, the emotion of the holidays is more pronounced than ever before." And we agree with Janki! This year, it's all about celebrations with our loved ones. Janki turns to the traditional Christmas colours of red, green with hints of gold and silver to create this gorgeous look exclusively for us. Featured here: The Celebration Collection by Kika Tableware ▶







**WE LOVE THIS UNCONVENTIONAL TAKE ON THE CHRISTMAS TREE. INSPIRED BY THE ART OF MAKING CZECH WOODEN TOYS, THIS TREE IS MADE OF RECYCLED WOOD.**



## SWETA & AJAY ARYA

*Founders, Ochre At Home*

"Christmas is the right time to channel your inner maximalist leanings by marrying statement accent pieces, bold furnishings, and accessories with each other. We've gone for that 'wonderful time of the year' vibe," says Ajay Arya, Founder, Ochre at Home. Sweta and Ajay take the unconventional route to create this intimate tablescape that has a luxurious, chic-barn look. Fern, twigs, fresh flowers and add to this clusters of candles with personalised Christmas messages, the effect is hearty, we love it! ▶





Click here  
TO READ MORE

**SANJYT SYNGH'S  
HOLIDAY LOOK IS FULL OF  
WHIMSICAL SURPRISES!  
BLACK, GOLD AND  
SILVER PAIRED WITH  
ELECTRIFYING COLOURS  
MAKE AN ECLECTIC  
STATEMENT**



**SANJYT SYNGH**  
*Interior Designer*

"Be brave and take risks," urges Sanjyt Singh. "I say, go Noir et Blanc with your Christmas tree." And we love this idea. In a combination of winter whites, intense black and metallic hints, this vision gives a twist to traditional holiday decorating. The mix of the unexpected with the expected excites us. It infuses a sense of fun and spontaneity to the look. Pair colours with patterns, and the traditional with the modern, to make a statement. "Use candles and tea lights in abundance. It's the perfect way to add glamour...." **GH**

PHOTOGRAPHS ATUL PRATAP CHAUHAN





# TRENDS FORECAST 2021

2020 has been a cathartic year. It has brought about a shift in the way we think, and view everything around us. And for this reason, the Decor and Design Trends 2021 as forecasted by the industry transcends the superficial and delves deeper into the very basic fabric of design. It's time to rethink, redesign and make the shift.

FEATURE **SEEMA SREEDHARAN**





**Akshat Bhatt**

Principal Architect and Founder, Architecture Discipline

## TREND ALERT: SELF-SUFFICIENT, MULTI-USE, DEMOCRATIC SPACES

This is going to be the century of recuperation. Being mindful and treating our own waste, generating our own energy and reducing consumption is the miracle we need to save our planet. Homes can be retrofitted to be entirely self-sufficient. They can rely on ground water to meet their potable water needs and generate their own power with solar panels or PV arrays. Creating individual pockets of greens and open spaces on multiple levels can aid ingress of natural light and fresh air and also house grow-rooms for farming food through techniques such as hydroponics and aeroponics. All dry and wet waste generated can be treated on site with the compost being utilised as feed for farming. Optimise space, minimise consumption and conserve resources

Post Covid-19, we can expect to see families opting for large living spaces that are naturally ventilated and allow for maximum daylight ingress. Homes need to be as robust as possible; hence materials that have a longer life-span, and are easy to maintain such as glass, stainless steel, copper and other anti-microbial substances as opposed to rough tactile surfaces, will witness a surge in demand. That said, the larger question that we need to address collectively is how we can utilise interstitial spaces and improve our engagement with existing spatial structures.

*Design is about reduction and optimisation; I hope the current scenario makes us realise how little we really need to co-exist happily.*

— **Akshat Bhatt**, Principal Architect and Founder, Architecture Discipline



PHOTOGRAPH: SAMEER TAWDE

*Essentialism is the new minimalism. While we have always questioned every line that is drawn, we are now questioning the necessity of elements that are introduced in our designs.*

— **Huzefa Rangwala**, Co-founder, Muselab



**Huzefa Rangwala & Jasem Pirani**

Founders, Muselab

## TREND ALERT: GENDER NEUTRAL, THOUGHTFUL AND FLEXIBLE SPACES

The den is no more a man cave and the kitchen is no more a woman's workshop. While we have always questioned every line that is drawn, we are now questioning the necessity of elements that are introduced in our designs. In terms of spatial planning, we are designing homes to be flexible by effectively arranging spaces and also manipulating the relationship between spaces. For instance, the dining table can be used as a study table or a home office. A family room can double up as a small home theatre or a perfect space for games night. More floor area in rooms allows for the space to be used by adults for morning yoga or by children for sleepovers. The kitchen is now where families are spending more time cooking and eating, hence we are integrating them with the living and dining spaces. The balconies and any other opportunities around windows are being used for small scale vegetable gardens.





*Today we use a very wide material palette that will continue. A mix of materials always offers a multi-sensory experience. But there will be a pronounced leaning towards natural and eco-friendly materials. Wood, cane, stones, will dominate.*

— Meenu Agarwal, Founder, MADS Creation



**Meenu Agarwal**  
Owner, Mads Creations

#### **TREND ALERT: HOME AS THE ULTIMATE RETREAT**

The home has emerged as the sanctuary where one is expected to find the strength and the resilience needed to tide over these difficult times. There will be a shift towards a natural palette, comforting and soothing colours and textures, and greenery. People will travel judiciously, hence the home will have to offer a sensorial experience, as well as bring in an outdoorsy feeling. A holiday vibe with easy, laidback design is what people are looking at. There is also an increase in environmental sensitivity, so plants and greenery will feature prominently in the design, so will sustainable materials and decor. People are redesigning their homes to include a home theatre, lounge, entertainment space, office, gym and games area.



**Sanjyt Singh**  
Interior Designer

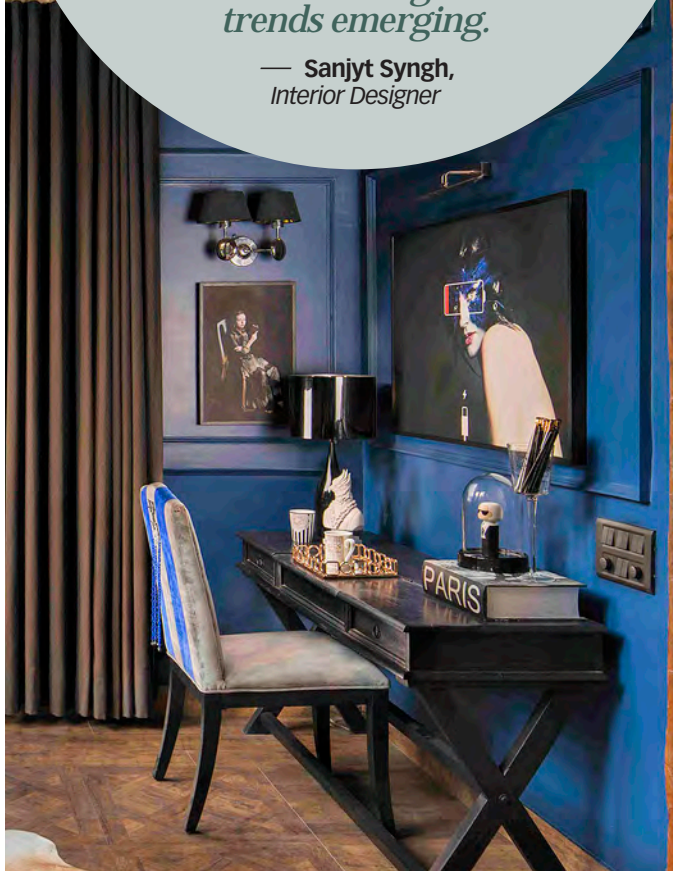
#### **TREND ALERT: RETRO MODERN, COMFORT CHIC & URBAN STREET STYLE**

There will be a series of revivals from the past. Interiors and materials are linked in emotional and aesthetic ways. With sentiments on a high, the craftsmanship of historical pieces is being considered priceless. What we will see is more of older crafts techniques. Interior trends mostly run in tandem with fashion trends. As we see a lot of street style being presented as high fashion, we will see a similar trend in interior design. And with WFH becoming the new necessity, comfort will be upgraded in looks.

**Trend Alert:** Shades of coffee with a dash of caramel - From mocha to latte to Americano...and pour in some caramel sauce.

*The Pandemic has changed things, but this change is temporary. With people being restricted to their homes, there has been a lot of focus on making comfort chic. But once the vaccine is out the world will be a small space again. We will see a lot of travel and global trends emerging.*

— Sanjyt Singh,  
Interior Designer







**Payal Seth Rastogi**

Co-Founder, ZEDLab

## **TREND ALERT: USER-CENTRIC DESIGN THAT'S COMFORTABLE AND SUSTAINABLE**

There has been a renewed appreciation for transitional spaces that maximise natural light and ventilation through double-glazed windows. Recycled or low environmental impact materials such as cross laminated timber, raw concrete and bio-plastics (plastic materials produced from renewable biomass sources, such as vegetable fats and oils, wood-chips, sawdust, recycled food waste, etc.), as well as neutral colours like blues, greys, whites and pastels are becoming increasingly popular. Additionally, the use of low-VOC paints (paint that contains Volatile Organic Compounds that are harmful chemicals carbon-containing substances) are being preferred with people prioritizing health and environment-friendly materials over luxury. There has also been a massive shift towards using local stones such as yellow Jaisalmer and river wash Kota.

**Trend Alert:** Creating a connection with nature, both visual and physical, through incorporating internal courtyards, maximizing window space and natural ventilation by adapting interior layouts will become a priority.

*There has been a notable shift from the old design aesthetic of opulent luxury and ornament towards a clean, minimalist and green approach. The green approach will dictate interior and exterior choices with people preferring low-impact and eco-friendly materials.*

— **Payal Seth Rastogi**,  
Co-Founder, ZEDLab



*All the changes are a reaction to the major upheaval that this year brought into our routine lives. Which is also why this is not a permanent state.*

— **Iram Sultan**, Interior Designer



**Iram Sultan**

Interior Designer

## **TREND ALERT: HYGGE, TECH-SAVVY HOMES**

The year 2021 is going to be all about beauty, comfort and then some more comfort. 2020 has drilled that lesson into our hearts and minds. We need spaces that evoke happiness, comfort, a feeling of security and calmness. I see hygge making its way into our homes again. Everyone wants a quality of cosiness and comfortable conviviality that engenders a feeling of contentment or well-being. There is an added focus on technology that makes a home multi functional and allows people to work from home if needed. For this reason, there is a focus on creating studies and dedicated server rooms. Sanitization is a big addition at all levels and varies in its extent depending on the scale of the project. From mud rooms being built in farm houses to sanitising booths in smaller homes, it is the call of the day.



*The pandemic has obviously changed the way we perceive things, a simple human touch or a practical meeting has become challenging. So design has to change to bridge this gap by introducing more comfort, ease and calmness.*

— Neha Gupta, Founder, Beyond Design



### Neha and Sachin Gupta

Owners, Beyond Design

#### **TREND ALERT: INDULGENT, FUNCTIONAL AND HI-TECH SPACES AND NATURAL TEXTURES WILL SHINE**

The trends for 2021 will bear the mark of the sweeping changes the pandemic has brought in in our lives. People are looking at some indulgent features within their own homes like a high quality home theatre system or a media room, play zones fitted with billiards tables, gaming consoles, a gym, or even a spa, wherever the space permits.

As we spend more time at home now, people are renovating their homes to update them with the latest amenities and comforts – from bedrooms to bathrooms. Since work from home will be a reality in the new year as well, they are asking for full-fledged office spaces within homes and also a little more detailed study areas for kids. Family areas and entertainment spaces are getting more attention too, so that all the members can sit and spend time together, or can host small get-togethers.

We see a focus on lighter shades like soft browns, ochre, mustard, shades from the family of whites, etc. We are using wine, charcoal, and such colours. Talking of textures, we need a disparate range of them to create interest, though we feel natural textures will be big.

Similarly, natural materials reaffirm our affinity with nature, so we would see more of them – wood, raw wood, cane, stones, etc.



### Anand Menon and Shobhan Kothari

Founders, ADND

#### **TREND ALERT: FLUIDITY OF SPACES**

The Pandemic has made us designers value space even more than before. The idea of dedicated spaces and multiple functions in different spaces have begun to be questioned. Lifestyle has been under the scanner in the pandemic. With work from home and school from home, spaces can no longer be exclusive. The need of the hour is “Fluidity of spaces”. This means multiple use for the same space needs to be thought out. Flexibility is key here. How a space can work during the day in various formats and change at night will be key to design.

In such a scenario the idea of understated elegance in design offsetted with neutral shades of colour to make for an environment that allows various functions will be best suited. The material palette will also come into question. Use of materials which are low on maintenance will be preferred.

*Importance of being mindful in design also helps in creating better well-being for the inhabitants. The use of “extra” will be questioned. Designs will need to get more empathetic towards being exactitude and efficient.*

— Shobhan Kothari,  
Founder, ADND







## Disha Bhavsar and Shivani Ajmera

Founders, Quirk Studio

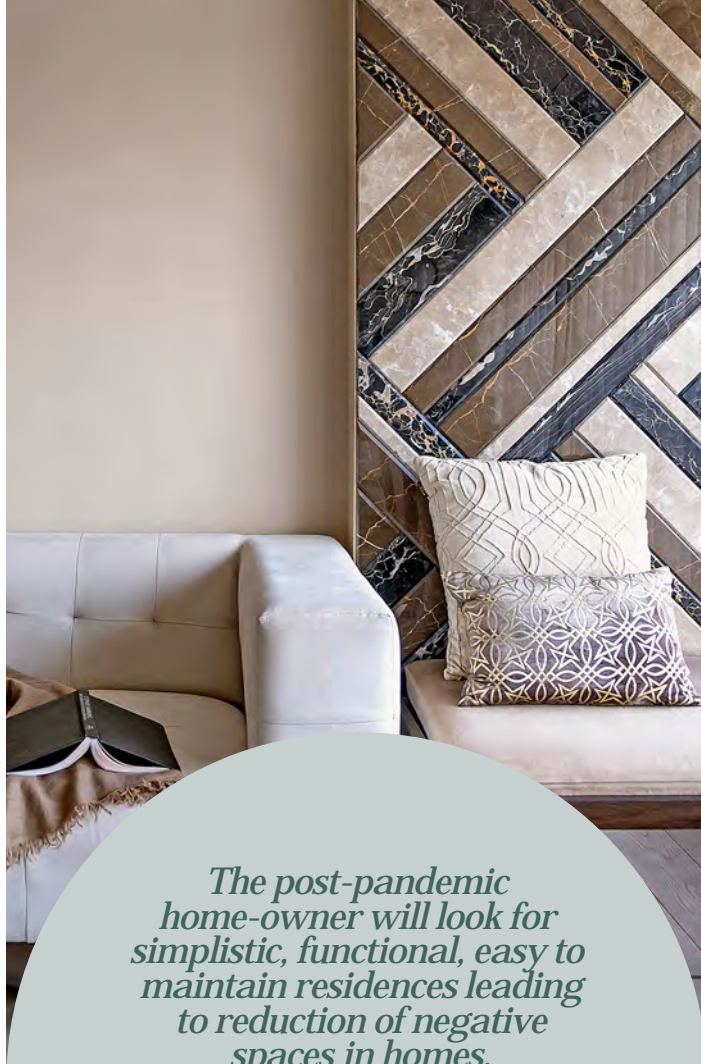
### TREND ALERT: MIXED METALS, SUSTAINABLE MATERIALITY AND BIOPHILIC DESIGN

Mixed Metals are a design trend that we see transcending the test of time. The sheer interplay of brass, matte black metal, copper tones, chrome finishes and their co-existence in a space that is well-articulated makes for an alluring visual. Sustainable materiality is here to stay, and we recognise the importance of its presence in our spaces more than ever before! These materials can be introduced into a space in a wide array of options: recycled eco-friendly tiles, fabric options, locally available raw materials are a few examples. Raw and earthy textures can underscore any design scheme with a rooted persona. We see the prevalence of cement, concrete, lime plaster and terracotta-finished surfaces, making a statement. We see the outdoors being brought indoors in hearty doses! Be it lush balcony nooks, indoor plants, succulent patches or botanical-inspired accents across spaces.

*We believe that moving forward, end-users will curate their private spaces that are a reflection of their true persona, with pieces that resonate with their aesthetic and functional needs.*

— Disha Bhavsar,  
Co-founder, Quirk Studio

PHOTOGRAPH: KLUBER SHAH



PHOTOGRAPH COURTESY: NACL

*The post-pandemic home-owner will look for simplistic, functional, easy to maintain residences leading to reduction of negative spaces in homes.*

— Natasha Aggarwal, Interior Designer and  
Founder, NACL



## Natasha Aggarwal

Interior Designer and Founder, NACL

### TREND ALERT: STATEMENT PIECES, EARTHY MATERIALS AND MONOTONE ELEMENTS

Extended time spent at home has also led to the shift in balance, as people begin to prioritise comfort over aesthetics in their interior spaces. Besides the shift brought about by the pandemic, furniture choices have also been moving towards the use of selected statement pieces other than elaborate design schemes. A similar trend has been appearing in artefacts as well. People prefer to pick out statement artworks that accentuate a space over crowding their walls with multiple pieces of art. Earthy materials that are organic, sustainable and recyclable are also going to be a responsible as well as a trendy material choice in interior design. Monotone elements set in earthy warm tones will also be a new trend in interior spaces. Flexible and adaptable spaces will also gain importance to house impromptu needs like home schooling and tutoring.





*People today have understood the value of having a well thought out space offering an experience of comfort and functionality.*

— Akash Mehta, Principal Designer, AMPM Design



### Akash Mehta & Poonam Mehta

Principal Designers, AMPM Designs

#### TREND ALERT: SMART, SUSTAINABLE LUXURY

Design as a concept is ever evolving, adapting to the changing needs and patterns of people. The pandemic has brought in unanticipated perspectives to the interior domain, which have created interesting challenges for us as designers. People today have understood the value of having a well thought out space offering an experience of comfort and functionality. People are certainly starting to make some sustainable choices in their daily living and habits. Building homes, interiors and over living is truly moving from conventional luxurious to smart sustainable luxury. Natural materials are always here to stay. Keeping the material in its true rawness and treating them with natural solutions seem to be in these days. Fresh colours, whether cold colours or warm are surely the thing for walls. Textures in paints and fabric textured wallcoverings add meaning to spaces.



### Shibani Jain

Founder, Baaya Designs

#### TREND ALERT: NATURE-INCLUSIVE DESIGN, ARTISANAL CRAFTS

The pandemic has finally made people realise the importance of a mindful interior design. Designing our homes is a matter of quality of life, of bringing wellness into our homes and creating a more sustainable lifestyle. Work from home is a new paradigm that is likely to stay for a while.

Dedicated workspaces at home, real home offices, more than just temporary corners in a room will be a sure trend in the coming year. One needs to have a space to be actually separated from the rest of the house, to be more productive but also to have a clear separation between working hours and relaxing thereafter.

There will be increased sensitivity towards home hygiene and sanitization. Families will invest in air purifiers to monitor the indoor air quality and new filtration systems for the air and the water. Germ-resistant materials like copper will be a likely addition to many Indian homes. Sustainable fabrics like cotton and jute with soft colour tones will replace chemically produced ones.

Buying design and art pieces from local craftsmen will also be a rising trend. This will not only help local artisans support themselves but also infuse unique art into your spaces.

*I am very sure that the trend in the new year will be a decor trend based on bringing nature and relaxed living into our homes in combination with classic, contemporary styling. Combining the art of the interior and product design, into the concept of nature-inspired environments is absolutely revolutionary.*

— Shibani Jain, Founder, Baaya Design







### Amit Shah

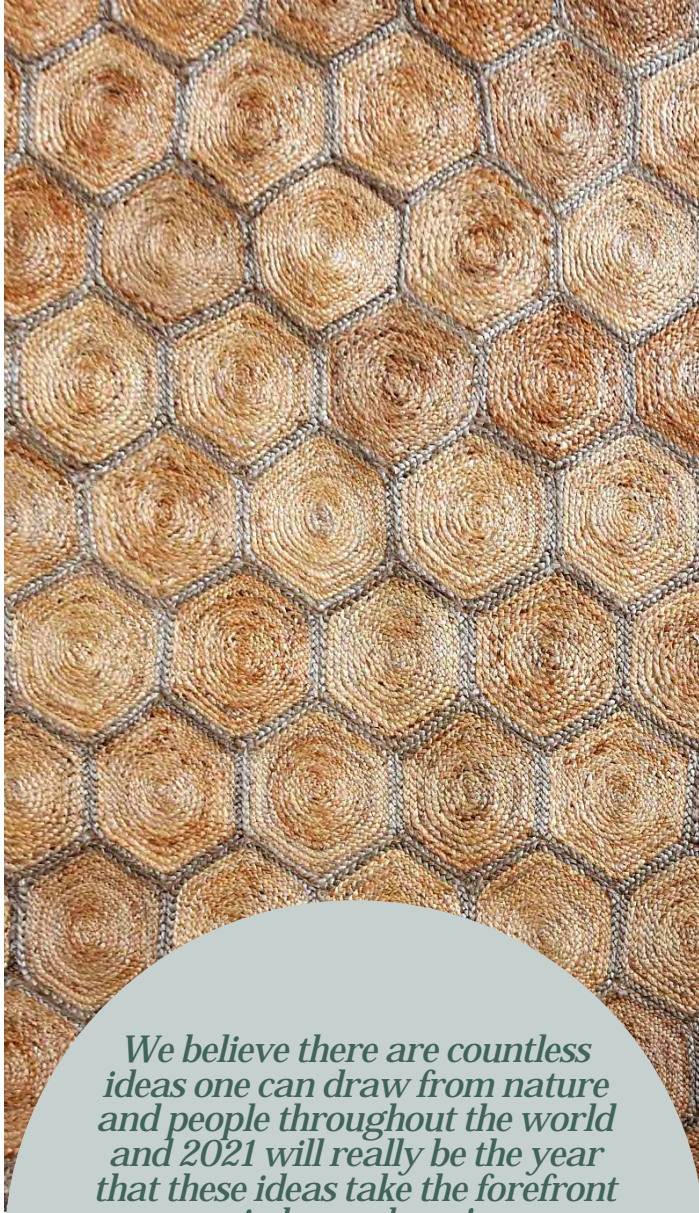
Managing Director, Classic Marble Company

#### TREND ALERT: TERRAZZO

Every once in a while, the classics make a comeback and the Terrazzo is an iconic example of it. Like minimalist design has found a place in modern architecture, and in interior design, the Terrazzo has been the people's favourite and it's not surprising that it has resurfaced as a winner. Especially, now that the stone can be made available in standardised sizes and in the choicest of designs, colours and patterns, it has become doubly irresistible. We haven't really encountered anyone resisting or not accepting the Terrazzo. Both sides, the conventional and the conservative have loved the re-introduction of this magnificent stone. Most architects are just happy to have as many options as possible to make their creations unique. The Terrazzo is a kind of stone that can be subtle as well as wild depending on the kind of application and the space in which it is installed.

*The conventional and the conservative have loved the re-introduction of this magnificent stone.*

— Amit Shah, Managing Director,  
Classic Marble Company



*We believe there are countless ideas one can draw from nature and people throughout the world and 2021 will really be the year that these ideas take the forefront in home decor!*

— Raghav Gupta, Director of Ecommerce,  
The Rug Republic



### Raghav Gupta

Director of Ecommerce-The Rug Republic

#### TREND ALERT: ECLECTIC DÉCOR INSPIRED BY TRAVEL

The Covid-19 pandemic has taught us a lot of things. One of them is the value of travel. Unfortunately, travel will not resume for the large part of 2021, so it is on the home-fashion industry to bring the charm of the world to people's homes! We believe that the trend of 2021 will be eclectic decor inspired from around the world. Techniques from one side of the world will come together with arts from the other side and the homes of 2021 will truly be commentaries on the globalisation of today.





# GOING DEEP INTO LUXURY

Divya Khullar Narayanan and Ashwath Narayanan of 1405 Design Studio create an elegant home in Chennai that resonates of an eclectic soul

FEATURE **AVRIL NOEL D'SOUZA**

PHOTOGRAPHS **SREENAG PICTURES (@SREENAG)**



Nestled along the coast of the Bay of Bengal with panoramic views of the sparkling blue ocean, this 10,000 Sqft home in Chennai is designed for a couple, both prominent actors, and their young family. Divya Khullar Narayanan and Ashwath Narayanan of 1405 Design Studio create a functional and highly-aesthetic home to reflect its owners' exuberant personalities.



“

DESIGNING THIS HOME GAVE US A CHANCE TO WEAVE TOGETHER A MYRIAD OF VISUALS AND SPATIAL STYLES...EACH EXPRESSED WITH DISTINCT MATERIAL PALETTES, DETAILS AND OBJECTS.

— Divya Khullar Narayanan, Co-founder, 1405 Design Studio

Spread across three levels, the design narrative for each floor is different from the rest. The spatial ground level is a celebration of everything the family holds closest to their hearts - from their spiritual inclinations to their traditions. So the language is immersive and functional. The second floor is dotted with private alcoves, reflective of the couple's true selves. The rich and indulgent upper level is where they entertain and enjoy the sunset and ocean view.







## DIVYA KHULLAR NARAYANAN AND ASHWATH NARAYANAN

**Co-founders, 1405 Design Studio**

1405 Design Studio is a multidisciplinary design practice established in 2016 at Chennai by Ashwath Narayanan and Divya Khullar. The studio takes on an explorative holistic approach to create bespoke narratives that are derived not by a particular style but the context, the need and the solution.

“

THIS HOME IS SELF-SUSTAINING, DESIGNED AS A COCOON. EACH SPACE HAS ITS OWN STYLISTIC GLORY WHILE CREATING AN ECLECTIC RHAPSODY.

— Ashwath Narayanan, Co-founder, 1405 Design Studio





# ROMANCING THE SEA

Designed by ns\*a and conceptualised for Shruti Jalan, one half of ns\*a, this home is inspired by the vast openness of the sea

FEATURE **SEEMA SREEDHARAN** PHOTOGRAPHS SEBASTIAN

ZACHARIAH





“

SURROUNDED BY INFINITE VIEWS OF THE ARABIAN SEA ON THREE SIDES INSTINCTIVELY BROUGHT US TO EXPAND ALL THE WINDOWS TO THE VISTAS BEYOND. WE TRIED TO CREATE A FEELING OF BEING ON A CRUISE SHIP.

— Shruti Jalan, Co-Founder & Interior Designer, ns\*a





# HOME

Walking into this home is like reading a lucid piece of poetry. It sweeps you in with its openness, enthralls you with the view, intrigues you with its design nuances and holds you in a warm embrace. It's the kind of home that inspires poetry.

"Surrounded by infinite views of the Arabian Sea on three sides instinctively brought us to expand all the windows to the vistas beyond. We tried to create a feeling of being on a cruise ship," says Shruti Jalan. She worked on the design and planning of her home with Neesha Alwani, her partner at their design firm, ns\*a. "Shruti being the designer and the owner made it an interesting experience," quips Neesha.

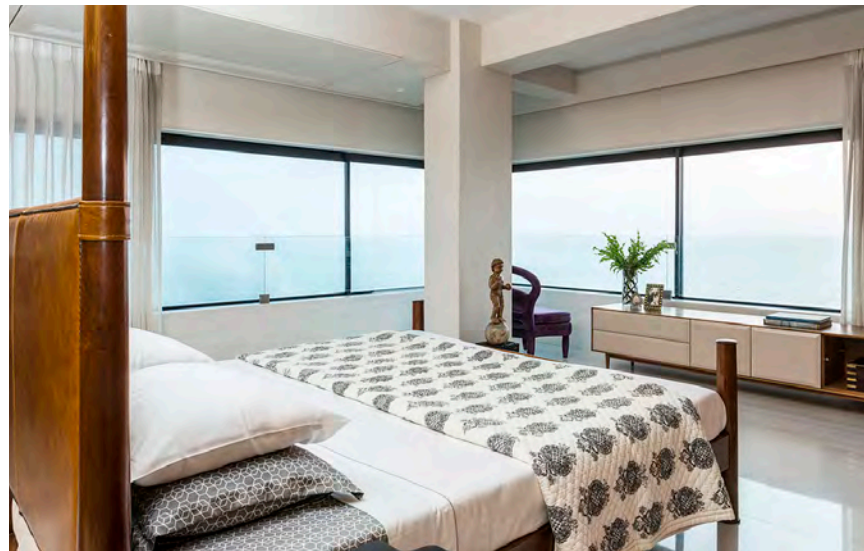
The 1,750sqft house rejoices in light. The neutral colour palette, white marble for the flooring and white stucco lime plaster on the wall adds to the sweeping spaciousness of the space. The home bears a carefully-curated look with mid-century modern furniture pieces, antiques and art all coming together in a delicate symphony. "The brass pot and antique teak wood chests are from Mahendra Doshi's Wadala haunts," adds Shruti. A Minam Apang artwork graces the living room wall, while an Ajay De painting holds its own in the den, and a Ramesh Gorjala artwork leads you to the bedroom.

It's a minimal space, but with a maximalist spirit. By minimal we don't mean stark and clinical, and maximalist doesn't mean crowded or cluttered. It's a beautifully balanced space.

## NEESHA ALWANI & SHRUTI JALAN

### Co-founders ns\*a

Architect Neesha Alwani and Interior Designer Shruti Jalan of ns\*a Architecture & Interiors have been practicing for over two decades now, and bring with them a deep understanding of contemporary living needs. Their work displays a balanced mix of function, form and flexibility. "We strive to search for optimal solutions that result in a functionally, aesthetically and economically built environments tailored to fulfil the requirements of our clients."





# BEYOND DIMENSIONS

Architect Aparna Kaushik designs a home that revels in its scale and celebrates a unique mix of modernity and tradition

FEATURE **SEEMA SREEDHARAN**  
PHOTOGRAPHS **ATUL PRATAP CHAUHAN**

At 15,000sqft, this farmhouse is a deviation from urban structures. Aparna has planned the built as independent wings with cascading roofs that emerge out of rich green scapes.







## APARNA KAUSHIK

**Principal Architect and  
Founder, Aparna Kaushik**

Aparna Kaushik's approach to design is inclusive rather than exclusive. For her, the inspiration for the design comes from the user, his needs, aesthetics and lifestyle. She's intrigued and fascinated by the history of art and architect, and that resonates in the spaces she designs. She designs everything — from the furniture to the furnishings — for her projects. Giving each project a distinct and unique design identity.

“

THE LAYOUT IS LIKE A DECONSTRUCTED RUBIK'S CUBE. THIS ENSURES THAT THE OUTDOORS IS VISIBLE AND ACCESSIBLE FROM EVERY SECTION OF THE HOME.

— **Aparna Kaushik**, Principal Architect  
and Founder, Aparna Kaushik



Aparna creates a warm and comfortable space that also boasts a bold and captivating design signature. For instance, the bespoke interiors of the cigar lounge feature the silhouette of a panther elevated on a black mosaic wall. An emerald green crystal shines through the eye of the panther.







At 15,000sqft, this home designed like a deconstructed Rubik's cube, with independent, interconnected blocks emerging from the lush green scape. Gold detailing on the entrance door, scintillating chandeliers in the lobby and dining rooms, bespoke wall art in the bar, and wallpapers in the bedroom -- this home is unapologetically opulent. The layout weaves an interesting interplay of indoor and outdoor spaces ensuring that every section of the home gets a great view of the greenscape.





# BASKING IN AN AMBER GLOW

Designer Sonal Bhatia crafts an address for a young Bollywood set director that is cosy, inviting and brimming with character

FEATURE **AVRIL NOEL D'SOUZA**  
PHOTOGRAPHS **RIDDHI PAREKH**



Surabhi Laddha is a set director by profession and the proud owner of this 1,200sqft Mumbai home. She called on Sonal Bhatia of the eponymous design firm to transform the bare walls of this two-BHK into her dream home, from which she could entertain and relax in. The result is a comfortable home with a slight eclectic edge while celebrating her envious art curation. We love how Sonal has used warm tones to soften the overall narrative.





**I WANTED TO CREATE AN EXPANSIVE LIVING ROOM. SO WE DECIDED TO BREAK A SQUARE BLOCK, WHICH WAS A TINY ENCLOSED ROOM, AND PULL THAT AREA INTO THE LIVING ROOM, THIS REALISED MY VISION FOR MORE SPACE.**

— Sonal Bhatia, Founder, Sonal Bhatia Interior Design



Sonal's vision needed some major demolition work. She had to convince Surabhi to give up a bathroom and use the space for a walk-in closet. Sonal gutted a small room in the living room to add to the expanse and accentuated the scale with wall panels.

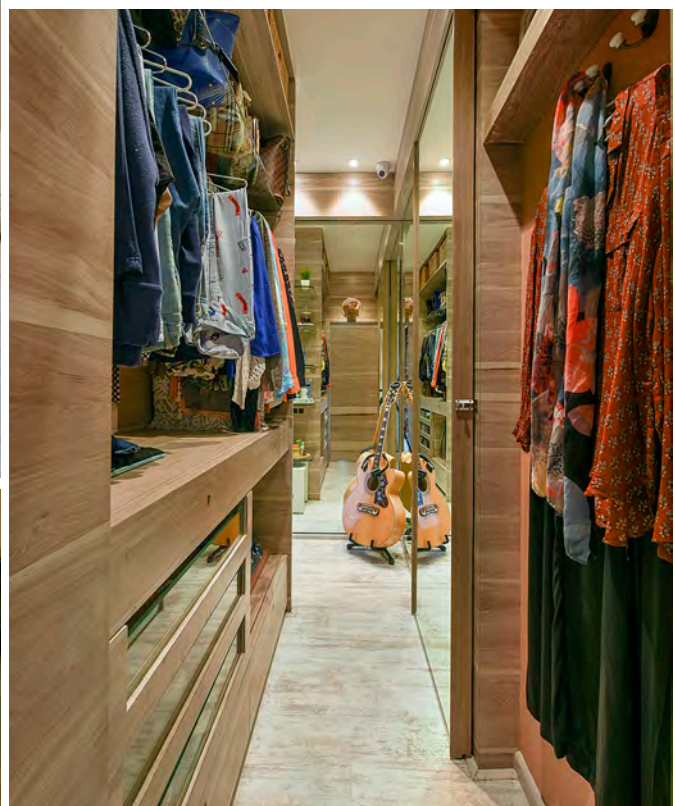




“

**SURABHI WAS CLEAR SHE DIDN'T WANT HARSH LIGHTING, AND WE WANTED TO ENHANCE THE NEUTRAL COLOUR SCHEME. TO ACHIEVE BOTH, WE PLAYED WITH MOOD LIGHTING TO ORCHESTRATE CONTOURS AND BRING ABOUT THAT AMBER GLOW.**

— Sonal Bhatia, Founder, Sonal Bhatia Interior Design



## SONAL BHATIA

**Founder, Sonal Bhatia Interior Design**

Sonal Bhatia has been in the design industry for more than two decades. The veteran has designed some stunning residences, hospitality projects and holiday homes all with her quintessential mantra of optimising space and infusing every square inch with character. This Mumbai home is an example of her exacting calibre of work. We cannot wait to bring you more projects by her!



# CRISP AND CHIC

Perched primly in Mumbai's skyline, this show apartment by Rakeshh Jeswaani is all things glamour and luxury, with a touch of timelessness

FEATURE **TINA THAKRAR**  
PHOTOGRAPHS **ASHISH SAHI**







“

The brief to us was very clear. The apartment needed to exude luxury, but also reflect Mumbai's contemporary lifestyle.

— Rakesh Jeswaani Founder & Principal Designer, Rakesh Jeswaani Interior Architects





Click here  
TO READ MORE



Blessed with a sprawling view of Mumbai city from up above, this five-bedroom Sky Villa is the epitome of chic living. Dotted with elements that exude luxury, it also has vignettes of warmth and comfort that make it feel like home. Designer Rakeshh Jeswaani was tasked with designing this show apartment, and he brought in his eclectic, contemporary style that perfectly matched the brief. From dark woods to metallic finishes, the material palette is sophisticated, and has been chosen with utmost care to ensure that the home never goes out of style.



RAKESHH  
JESWAANI

Founder and Principal Designer,  
Rakeshh Jeswaani Interior Architects

In a career spanning almost three decades, interior architect Rakeshh Jeswaani has infused every one of his projects with a strong contemporary aesthetic, which also has a place for design styles like Art Deco and Neo Classical, iconic furniture pieces and modern art. His love for travel inspires most of his designs, which are always rich in elegance and warmth.

“  
We attempted to design a space that not only makes a statement, but is also vibrant and fresh in its design and detailing.”

— Rakeshh Jeswaani Founder & Principal Designer, Rakeshh Jeswaani Interior Architects





## ABCD

**Anemos** [www.anemos.in](http://www.anemos.in)  
11/12, Krishna House, Ground Floor,  
Raghuvanshi Estate, Senapati Bapat Marg,  
Gandhi Nagar, Upper Worli, Lower Parel,  
Mumbai, Maharashtra 400013, 22 2493 4306  
**Art Age Home Pvt Ltd** [www.artageindia.com](http://www.artageindia.com)  
**Baaya Design** [www.baayadesign.com](http://www.baayadesign.com)  
**BARO MARKET** [www.baromarket.in](http://www.baromarket.in)  
**BARO DESIGN** <https://www.baro.design/>  
**Beyond Designs** [www.beyondesign.in](http://www.beyondesign.in)  
**Beyond Designs Home** [www.beyondesign.in](http://www.beyondesign.in)  
**Black and Decker** [www.blackanddecker.com](http://www.blackanddecker.com)

## EFGH

**Ellementry** [www.ellementry.com](http://www.ellementry.com)  
Shop LG 08, Infiniti Mall, New Link Rd,  
Malad West, Mumbai, Maharashtra  
400064, 91166 12813  
**Eliteearth** [www.eliteearth.in](http://www.eliteearth.in)  
**EMERY STUDIO**  
[www.instagram.com/emerystudio.in](http://www.instagram.com/emerystudio.in)  
**Episode Silver** [www.episodesilver.com](http://www.episodesilver.com)  
**Esvee Atelier** [www.esveeatelier.com](http://www.esveeatelier.com)  
**Etrelux** [www.etreluxindia.com](http://www.etreluxindia.com)  
**Gulmoharlane** [www.gulmoharlane.com](http://www.gulmoharlane.com)  
**Harshita Jhamtani Designs**  
[www.harshitajhamtani.com](http://www.harshitajhamtani.com)

**Heimars** [www.heimars.com](http://www.heimars.com)  
**Home Edition** [www.shophomeedition.com](http://www.shophomeedition.com)  
**House of Atiya** [www.houseofatiya.com](http://www.houseofatiya.com)

## IJKL

**IAAH** [www.iaah.com](http://www.iaah.com)  
**Inhabit** @inhabit\_store  
**Kika Tableware** [www.kikatableware.com](http://www.kikatableware.com)

## MNOP

**MADS Creations** [www.madscreations.in](http://www.madscreations.in)  
**Mangrove Collective**  
[www.mangrovecollective.in](http://www.mangrovecollective.in)  
**Morphy Richards**  
[www.morphyrichardsindia.com](http://www.morphyrichardsindia.com)  
**Nicobar** [www.nicobar.com](http://www.nicobar.com)  
**Pepperfry** [www.pepperfry.com](http://www.pepperfry.com)  
**Plusch Living** [www.pluschliving.com](http://www.pluschliving.com)  
**Ochre At Home** [www.ochreathome.com](http://www.ochreathome.com)  
**OMA** [www.omaliving.com](http://www.omaliving.com)  
**Orient Electric** [www.orientelectric.com](http://www.orientelectric.com)  
**Orvi Surfaces** [www.orvi.com](http://www.orvi.com)  
**Ottimo** [www.ottimo.in](http://www.ottimo.in)

## QRST

**Sana Home Furnishings** [www.sava.in](http://www.sava.in)  
**SanSar Home** [www.sansarhome.com](http://www.sansarhome.com)  
**Sans Souci** [www.ss-gd.com](http://www.ss-gd.com)  
**Sarita Handa** [www.saritahanda.com](http://www.saritahanda.com)

**Soulflower** [www.soulflower.biz](http://www.soulflower.biz)

**Sources Unlimited**

[www.sourcesunlimited.co.in](http://www.sourcesunlimited.co.in)  
B-805 Hubtown Solaris, N.S. Phadke Road,  
Opp. Telli Gully, Andheri East, Mumbai,  
Maharashtra 400069, 22 6210 1700  
**SR Artefacts** [www.srartefacts.com](http://www.srartefacts.com)  
Dr Annie Besant Rd, Near Worli,  
Flyover, Bhim Nagar, Worli,  
Mumbai, Maharashtra 400018, 22 24908080

**Tecnora** [www.tecnora.in](http://www.tecnora.in)

**The Needle Crafter**

(You may contact the brand via their  
Instagram account) @theneedlecrafter

**The Yellow Dwelling**

[www.theyellowdwelling.com](http://www.theyellowdwelling.com)

**Tisva** [www.lightsbytisva.com](http://www.lightsbytisva.com)

**Thinkcutieful** [www.thinkcutieful.com](http://www.thinkcutieful.com)

## UVWXYZ

**UDC Homes** [www.udc-homes.com](http://www.udc-homes.com)

**Villas of Mint** [www.villasofmint.com](http://www.villasofmint.com)

**Visionnaire** [www.visionnaire-home.com](http://www.visionnaire-home.com)



**GoodHomes** INDIA