

GoodHomes

INDIA

A Times of India Publication
VOLUME 13 ISSUE 03 JUNE 2020

GOOD DESIGN CHANGES EVERYTHING

@goodhomesmagazine
@goodhomesmagazineindia
@goodhomesindia

**WE WELCOME
THE NEW BREED
OF URBAN
NATURALISTS**

*Garima Singh
Tejas Sidnal
Shashank Gautam
Vaishali Shadangule*

13

**EVOCATIVE HOMES
IN SYNC WITH
THEIR NATURAL
HABITATS**

DECOR FIXES

**TO MAKE
MEALTIMES
MORE
ENTICING**

**CHECK
OUT
OUR
RECOMMENDATIONS
FOR GUILT-FREE
SHOPPING**

MAKE THE SHIFT NOW!

Eco-conscious is the new way to be

**SUSTAINABLE SOLUTIONS FOR CITY HOMES
AND COUNTRY HOMESTEADS**



“We’ve settled into the new normal. Masks and sanitisers have become constants in our lives. Social distancing comes naturally. It’s amazing how we humans condition ourselves to anything, anything at all. We are a resilient lot!

As I find myself working from home, slowly falling into a rhythm, appreciating the time I’ve had with my family (even though it was unplanned), I’m also struck by two things; firstly, the fact that, the roads are cleaner, the air seems fresher, the skies devoid of smoke trails, and somewhere else in the world, I’m told, dolphins are reclaiming their domain. The earth seems to be heaving a sigh of relief.

That brings me to the theme of our issue — living the naturalist’s way. Mindful, ethical, sustainable living. Now, more than ever, is the time to reflect, be more aware of our actions, and how it impacts not just our microcosms, but the world at large. It’s the choices we make — what we wear, what we consume or in general, how we live — that matters.

This issue is proof that for a lot of us living ethically is not just another option, it’s the only option. As for the rest of us, it’s about time that we make the shift.

In this issue we take you to some of the most sustainable homes, get you up, close and personal with eco warriors, and well, with nature.

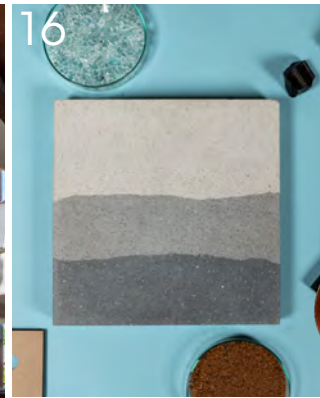
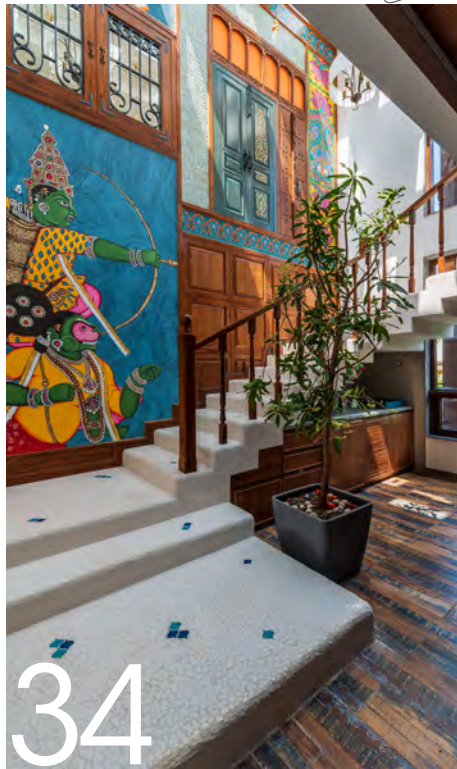
Let mindful living be our new normal.

Signing off with that thought...

Seema Sreedharan
Editor

CONTENTS

June 2020



05 SHOPPING

- 06 HOT RIGHT NOW
- 08 WISHLIST
- 09 PIECE OF THE MONTH

10 PEOPLE

- 10 SHASHANK GAUTAM
- 12 VAISHALI SHADANGULE
- 14 GARIMA SINGH
- 16 TEJAS SIDNAL

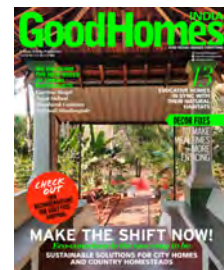
18 SPECIAL FEATURE

- 18 HIGH ON YOUR ECO-CONSCIENCE, WE SHOW YOU HOW TO LIVE MORE SUSTAINABLY (READ ETHICALLY) IN THE CITY

- 20 LIVING IN THE LAP OF NATURE

26 HOMES

- 26 A RETREAT TO THE TROPICS OF GOA
- 32 WAKING UP IN AN ECLECTIC MUSEUM
- 34 WHEN THE SKY’S THE LIMIT
- 46 HILLSIDE GETAWAY
- 48 A LESSON IN SUSTAINABILITY
- 52 LUXURY WITH A CONSCIENCE AND MORE....



THE COVER

FEATURE AVRIL NOEL D’SOUZA
HOME KARISHMA BAJAJ
PHOTOGRAPH KARISHMA BAJAJ

GoodHomes

NEXT ISSUE

Homes with personality!

When we write about homes, we write about them as if it were a person. Our July issue will bring you face to face with some of the most amazing interiors with the biggest personalities we've seen this year! Stay tuned.



Calling all style interns – especially those based in New Delhi and Mumbai. Quick! Send us your resume if you'd like the opportunity to work with us.
Email:
goodhomes@wwm.co.in

CEO
DEEPAK LAMBA

EDITOR IN CHIEF
RONITAA ITALIA

Editor Seema Sreedharan
Associate Editor Avril Noel D'souza
Senior Features Editor Tina Thakrar
Senior Digital Writer Nitija Immanuel
Senior Editorial Coordinator Harshal Wesavkar
Deputy Art Director Shalaka Shinde
Senior Graphic Designer Anushree Kumar
Stylist Kamakshee Tewari

Chief Financial Officer Subramaniam S.
Head Human Resources Meghna Puthawala
Publisher Joji Varghese
Experiential Marketing Aakash Mishra
Content Studio Vidyut Patra
Head Marketing Priyadarshi Banerjee
Head Digital Solutions
Chief Marketing Manager Ravi Budania

BUSINESS DIRECTOR
SUNIL WUTHOO

BRAND SOLUTIONS

WEST
MUMBAI
Vice President
- Brand Solutions &
Business Head
- Femina Salon & Spa
Gautam Chopra
gautam.chopra@wwm.co.in
PUNE
Ekta Dang
ekta.dang@wwm.co.in
AHMEDABAD
Kamal Rajput
kamal.rajput@wwm.co.in

NORTH
Vice President & Sales Head
- Long Format Content
Anjali Rathor
anjali.rathor@wwm.co.in
NOIDA/NEW DELHI
Atif Shakeb
atif.shakeb@wwm.co.in

JAIPUR
Pushpesh Sood
pushpesh.sood@wwm.co.in

EAST
Assistant Vice President
Alka Kakar
alka.kakar@wwm.co.in
Bijoy Choudhary
bijoy.choudhary@wwm.co.in

SOUTH
Vice President - South
& Business Head
- Femina Tamil
Pravin Menon
pravin.menon@wwm.co.in

CHENNAI
Karthik D
karthik.d@wwm.co.in

SUBSCRIPTIONS

Asha Kulkarni, Manager Marketing
asha.kulkarni@wwm.co.in

Associate General Manager (RMD)
Suparna Sheth, suparna.sheth@timesgroup.com
Editorial Enquiries goodhomes@wwm.co.in

FOR SUBSCRIPTIONS
Online: mags.timesgroup.com
SMS: GHSUB 58888
Mail: subscriptions.wwm@wwm.co.in
Call: 18001210005
(All India toll free number)

GoodHomes takes no responsibility for unsolicited photographs or material. All photographs, unless otherwise indicated, are used for illustrative purposes only

For marketing queries, e-mail goodhomes@wwm.co.in, For editorial queries, e-mail goodhomes@wwm.co.in

Printed and published by Joji Varghese on behalf of owners Worldwide Media Pvt Ltd, The Times of India Building, Dr DN Road, Fort, Mumbai 400001, and printed at Rajhans Enterprises, No 134, 4th Main Road, Industrial Town, Rajajinagar, Bengaluru 560044, and published at Worldwide Media Pvt Ltd, The Times of India Building, Dr DN Road, Fort, Mumbai 400001 Processed at Colour Processing, The Times of India Suburban Press, Kandivali, Mumbai 400101

All rights reserved worldwide. Reproducing in any manner without prior written permission prohibited

CIN: U22120MH2003142239





PHOTOGRAPH BINISHA AJMERA

WRITE TO ME goodhomes@wwm.co.in
SUBSCRIBE mags.timesgroup.com/good-homes.html
FOLLOW US ON:
INSTAGRAM @goodhomesmagazine
FACEBOOK @goodhomesmagazineindia
TWITTER @goodhomesindia
LOG ON NOW www.goodhomes.co.in

We have spent an entire Summer with our families, at home. All of it. No weekends off. No short overnight getaways – from work or from each other! For a season that we'd normally have spent in the sunshine, gathering up warmth for the rest of the year, we have spent most of our waking time indoors, catching the glare instead from screens of varying sizes.

With schools reopening next week – albeit virtually – I'd have normally been doing the rounds of various marketplaces making sure all the essentials for the boys were stocked up on. What I've ended up doing instead is staring at my little screen, ticking off little boxes, stocking up little shopping carts, without moving an inch from my perch on the living room couch. With that task done, I moved to another slightly larger screen to download worksheets and fill up the kids' virtual bookshelves with other reading and reference material for the oncoming classes. It is surreal to be prepping for school to reopen, without the tiring (and very trying) customary shopping expeditions for bags, bottles, breakfast boxes, rain gear, books, uniforms....

I'm not sure about the new routine – I used to love waking up with the birds to catch my daily dose of quietude before making a dash for the day with the kids. Our 7am trips to the school bus-stop will be missed. For now, it's only going to be 9am trips to the study table – nothing quite like our sleepy morning sojourns. It's going to be a strange feeling, sharing desk space with the kids – good strange or bad, I'll let you guys know in my next editorial.

And now for the part I'm most excited about....

While researching for this issue, I came across this study online about age reversal and how the trick lies in cheating your mind to believe you're a lot younger than your biological age. And the best way to do it is to break out of all routine and go back to teaching yourself new things – highly recommended by the clinical researchers. Do you see where I'm going with this whole train of thought? Well, with this complete rehashing of our lives and worlds, I'm really looking forward to getting younger this year. Hell, yeah!

Welcome to June, all of you!

RONITAA ITALIA
Editor in Chief

SUMMER BREEZE

June



CLARKE & CLARKE, AVAILABLE AT MAISHAA



EMERY STUDIO



1BHK



SURPRISE HOME LINEN



Bring in the cool. Think along the lines of easy, light fabrics; whites, pastel tones; coupled with a clutter-free, minimal approach to living. It'll have you believing a cool gust of summer breeze is lilting through your home.

FEATURE **AVRIL NOEL D'SOUZA**



GREENLAM

Shopping Guide on Pg 55



1
Centrifugal Juicer*,
www.morphyrichardsindia.com.



8
Nutri Blend Black*,
www.wonderchef.com



2
Beryl Mixer Grinder*, www.bajaelectricals.com,



7
Klara Castline*,
Häfele.

THE ULTIMATE MIX-UP!

Mixers and juicers...
the kitchen essentials

FEATURE **AVRIL NOEL D'SOUZA**



3
Problend Melange*,
Häfele.



6
JEX 16 Full Apple Juicer*,
www.bajaelectricals.com.



4
Mixer Grinder HL7707*,
www.philips.co.in.



5
Nutriart Juicer*,
www.havells.com



8
FF Prisme colour
coffee table front
by Fendi Casa*,
Seetu Kohli Home.



1
Vase Pivoine
Ambre from
Lalique*,
Emery Studio.



2
Confluences by Philippe
Nigro from Lignet Roset*,
www.iotafurniture.com



7
Tidbid nut
bowl set of 2*,
www.ellementry.com

THE COLOUR OF SUNSHINE

...to get the glow back on

FEATURE **AVRIL NOEL D'SOUZA**



3
Citron rug*,
www.jaipurrugs.com

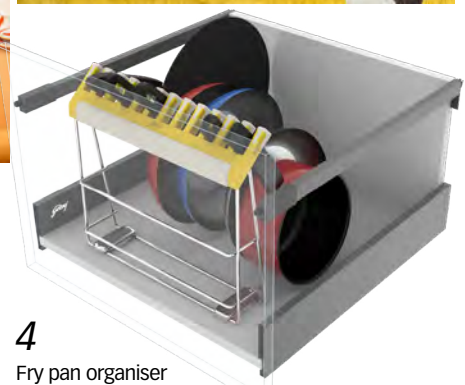
6
Cushion by
Fendi Casa*,
Seetu Kohli
Home.



9
Tableware by
FURSTENBERG*,
Sources
Unlimited.



5
Ottoman arm chair
by Noé Duchaufour-
Lawrance*, www.iotafurniture.com.



4
Fry pan organiser
in Ergo box by SKIDO*,
www.godrejitchensystems.com



BEAST MODE

Trust Sanjay Garg of Raw Mango to transform the humble terracotta into the foundation of a coveted design. What makes Baail, Figure of a Bull, more special to us is that it participated in the debut outing of The India Design Fund, that unites the Indian design community to support those working for various COVID-19-specific relief work.

For more information visit www.theindiadesignfund.com

FEATURE **AVRIL NOEL D'SOUZA**



Shopping Guide on Pg 55



THE CRAFT OF WOOD DESIGN

Inspired by the architecture of the stepwell, KEPH brings us Lupt Tolti - a circular, wooden centre table with hand-etched carvings of dancing Warli figures

FEATURE **AVRIL NOEL D'SOUZA**

LUPT TOLLI

Lupt Tolti meaning the Lost Tribe is a high-rise rotating centre table, that takes its structure from the depth of a stepwell. As if the ascending nature of this design wasn't enough, the founders of KEPH have adorned each step with Warli-inspired figures depicting their celebratory moments.

The dance comes alive with a slight push of hand, and as the table rotates stories come to life. Poetry in motion!



Shopping Guide on Pg 55



RAW APPEAL

Bamboo finds a new meaning in designer Shashank Gautam's lexicon

FEATURE **SEEMA SREEDHARAN**



Shashank Gautam's fascination with building things started early. "My grandfather had a cycle-rickshaw rent and repair shop; my father used to assist him. I visited often. I was inspired by how they did repairs and restorations. That is what I wanted to do. I didn't know about being a designer, but I knew I wanted to make things," reminisces Shashank, Designer and Founder, MIANZI. He followed his instinct and went on to pursue Bachelors in Architecture from SPA Delhi & Masters in Industrial Designing from IDC, IIT Mumbai. He discovered the versatility of bamboo when as part of a competition he had to conceive and design a building with zero carbon footprint. "It was then that I realised the true potential of bamboo. I established MIANZI to revolutionise the way bamboo is seen and used by bringing eco-friendly yet inventive bamboo-built options in furniture, lifestyle products, and architecture.



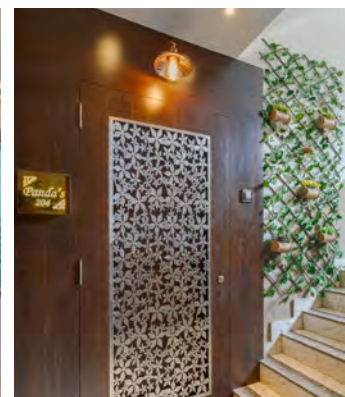
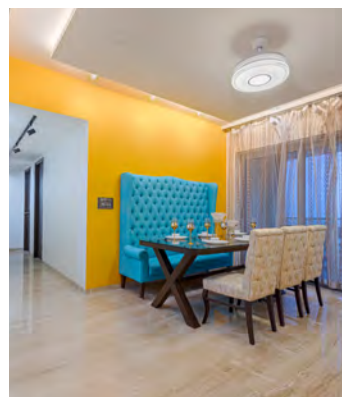
SHASHANK GAUTAM

Design should be a polygamy of different elements to accomplish a particular purpose. For instance, the combination of an eco-friendly approach and futuristic minimalism.

— Shashank Gautam, Founder, MIANZI

WHEN DESIRE MEETS A NEW DESIGN

ANCHAL BAJAJ OF ECLECTIC INTERIORS, A DESIGN FIRM BASED OUT OF MUMBAI GETS CANDID ABOUT HER PASSION FOR DESIGN



“Doctors save lives by constructing a healthy life. Designers save lives by constructing a life worth living” Interior designer Anchal Bajaj quotes Mark W Perrett when asked what designing means to her. When asked as a child what I wanted to become I always said I wanted to do something creative, putting a smile on someone’s face always inspired me to keep working hard. Anchal has always been passionate about design, her immense love for colors, lights & spaces, eventually made her established her own firm Eclectic Interiors in the year 2015. This Mumbai based firm has bought a series of residential designs to life.

In a short span of time Anchal has succeeded in creating a niche for her brand “We take on the entire project right from consultation stage to the project management and Implementation. We provide end to end solution” informs Anchal.

I have a vision to design affordable homes for lower income people I want to add the greatest joy of living to their lives by giving them a space to sit back and be themselves after a long day at work

I am currently working on a bungalow, honestly I can’t wait to get back to the construction of the same. Another interesting project that I am working on is transforming a 45 year old residence in the heart of the city. Besides that there are a few residential projects in the pipeline.

The future looks promising for Anchal, we cannot wait to see what all Anchal is upto, here’s wishing her all the very best!!

“
WE CREATE, YOU ENJOY”
I TRULY BELIEVE THAT
IF YOU LOVE WHAT YOU
DO, IT WILL LOVE YOU
RIGHT BACK

—Anchal Bajaj

ECLECTIC
INTERIORS

SUPER NATURAL

*Reuse. Redesign. Rethink.
This, according to
designer Vaishali
Shadangule, is the only
way forward*

FEATURE **SEEMA SREEDHARAN**

Born in the small town of Vidisha, Madhya Pradesh, Vaishali realised her passion at a very young age. When forced to marry at the age of 16, she fled her hometown to pursue her calling. "When I stumbled upon fashion, it became my way of life," says Vaishali. Today, two decades later, she's known as one of the foremost proponents of hand-woven textiles and sustainable fashion. "When I was a child, I used to see my mother's wardrobe and the fine, soft sarees it had. I also saw my grandmother often wearing Khunn blouses. My surroundings in many ways have inspired me since then to discover the essence of a weave." Sustainability is not a new word for Indians, it is an ingrained one, she says. Now more than ever, she feels, is the need to be more mindful of nature, to be more ethical in our choices.

VAISHALI SHADANGULE

*Nature has been the only teacher, what I observe
around me is a subconscious exchange of energy, and
that makes me design what reflects nature.*

— Vaishali Shadangule, Designer

PHILANTHROPY IN THE TIME OF COVID-19

DR ANEEL KASHI MURARKA Operating from home, he is helping those hit hardest by the coronavirus lockdown



initiatives in different states by operating from home,” he explains.

The COVID-2019 pandemic has created a unique set of needs and has exacerbated the needs we already had. With the extension in the lockdown period, more and more people may need financial, emotional, and resource help. Let's be inspired and not wait for the worse to happen. “I am extremely pleased to offer my assistance to the state government in whatever way possible during this critical period and support the city that has continued to contribute to our success and growth for the past 3 decades or more,” says Aneel.

Aneel lives a blessed life and is safe and comfortable, thanks to his hardworking nature. He could've sat by and silently witnessed the growing marginalisation of our society. Yet, he is thoughtful and trying to reach out to more needy fellow being in whatever way possible. “We are all here for a reason, having a purpose makes it impossible to merely exist. When you have a definite reason for living, your passions and efforts will drive you toward a happy, fulfilling destination” he concludes.

Philanthropist like Aneel often respond quickly and find innovative and effective ways to provide for immediate and long-term needs. And at a crisis time like this of rising nationalistic attitudes, as a true patriot, he leads the way living up to the real meaning of the word philanthropy – “love of humanity”.

You're washing your hands. You're avoiding large gatherings. But, in addition to taking all the steps to follow crucial safety guidelines for yourself and your family, what are you doing to help the individuals and communities affected by the COVID-2019 pandemic?

Meet Dr. Aneel Kashi Murarka a noted industrialist and philanthropist based in Mumbai. He is the Managing Director of Mirachem Industries and founder of Social Enterprise Ample Mission. Under the lockdown, Aneel manages his company's affairs and operations from his home, at times working for hours at a stretch. With all this ongoing work, he religiously works towards Covid-2019 relief work.

The immediate response to the

disaster is obvious, i.e providing food and shelter to the poorest who have lost livelihoods and have no safety net — and especially migrant workers whose lot is the worst, living as they are in limbo, neither at home in their States nor with proper support in the big metros.

Large amounts of private wealth will be required to tackle the long-term consequences of coronavirus. Beyond the medical crisis, there will be a range of serious issues that arise, including food insecurity, the loss of jobs, and various challenges related to education and mental health. “Whichever way you choose to help, remember that we are all in this together, and whatever we can do to ease the burden for some of us is an obligation for fellow

citizens,” says Aneel.

Carrying forward the core principles of social responsibility to reach out to the needy, Aneel and his teenage son Sidhaant Murarka, Co-founder, Team Ample Mission, are spearheading many humanitarian initiatives across India at different levels. Their focus is to provide both medical supplies and food necessities for hundreds of affected people. This vision is becoming a reality through Aneel's widespread distribution network that he has set up through local support groups over the phone and with digital assistance from his core team. “Throughout the day we coordinate with various joint partners, medical NGOs, government officials and effectively contribute for multiple ongoing relief



OF A DELICATE NATURE

*Garima Singh transforms
the humble stationery
into bespoke works of art
inspired by nature*

FEATURE **AVRIL NOEL D'SOUZA**

Her love for home decor was strong enough to get her to pursue it as a profession. What pushed Garima Singh even harder on this path, was her realisation that there weren't enough of brands borne in India. Encouraged by her artistically-inclined mother, and the legacy of her grandmother, Garima established Bael Botanicals a year back. "I was inspired by vintage nature art and wanted to make home decor accessories with that in mind. Being a nature lover I commit myself to remaining sustainable and preserving what I'm inspired by most so we can enjoy it today and the future generations can enjoy it tomorrow." It's a noble thought. Garima is a self-taught artist who mainly paints with watercolours. "I make botanical paintings, illustrations and line art. I also paint with chalk paint on wood and Decoupage. I am currently learning faux calligraphy." We are excited to see what else she has in store for us!



GARIMA SINGH

I started designing stationery because I could never find beautiful envelopes. A client who bought my envelopes told me "A good envelope makes an impression, people remember"

— Garima Singh, Designer

STAY SANITISED. STAY SAFE

INTRODUCING SANITAB – A UNIQUE DISINFECTANT THAT IS EFFECTIVE AGAINST ALL SORTS OF VIRUSES AND PATHOGENS



The Parikh family has been a known name in human and veterinary

healthcare space for the past 25 years. Aniket Parikh, 29, took over the reigns of the family business after completing his masters in Biotechnology and Enterprise and Entrepreneurship from Johns Hopkins University, US. Together with his wife Namrata Parikh, 24, who has a degree in Psychology from the University of Pennsylvania, he set up Sanitab.

Namrata and Aniket both realised the need to adapt to the current situation. “Fortunately we manufacture this product in a FDA approved factory in Maharashtra, and the product composition as well has been registered with the FDA. We quickly adopted the B2C model to set up a website to drive online sales to cater on a pan-India basis even during the lockdown, since it was classified as an essential service and goods,” informs Aniket.

Sanitab is unique in its composition and usage. One tablet has several uses, based

“

“THE PRODUCT HAS BEEN VERY WELL-RECEIVED IN INDIA. WE ARE ALSO IN THE MIDST OF FINALIZING SOME EXPORT DEALS IN ASIA AND THE MIDDLE EAST,”

—Namrata Parikh



on the target volume and can be used to disinfect fruits and vegetables, can also be used to disinfect surfaces and vehicles. In fact, Sanitab can also be used in a higher concentration to disinfect hospitals.

The active ingredient – NaDCC (Sodium Dichloroisocyanurate) releases hypochlorous acid and is known to be more stable than sodium hypochlorite and more biocidal than the rest of the disinfectants out there. It is also approved by the EPA against COVID, and regularly used and recommended by the WHO, UNICEF, UK Department of Health, Indian Ministry of Health and Family Welfare.

“The product has been very well-received in India. We are also in the midst of finalizing some export deals in Asia and the Middle East,” says Co-founder Namrata. “In addition, we are also pursuing the US EPA registration for the US market.



THINK SMART

Tejas Sidnal is creating stunning and decorative tiles from air pollution. It's a unique science and we are all for this!

FEATURE **AVRIL NOEL D'SOUZA**

Now more than ever, we need to regroup and change the way we view the world. From the way we sleep, to the way we live...every little change that we can make towards preserving and nurturing mother nature, will have a far-reaching effect. And all the help matters. In pursuit of living the change, we came across Carbon Craft Design, spearheaded by architect Tejas Sidnal. The core focus of the company is to use air pollution that has been harvested by AIR-INK and convert that into pieces of design. The science behind this creation is quite fascinating and we are truly excited to see what the company is going to bring our way in the future. For right now, we want to draw your attention to Carbon Tile, a stylish solution that the company has manufactured. Just one of these bespoke tiles is equivalent to cleaning 30,000 litres of air. That is one day of clean air for a person! We have your attention now?



TEJAS SIDNAL

With the present-day context, we designed Carbon Tile to use its significance in commercialising environmental solutions. This is at the intersection of craft & science.

— Tejas Sidnal, Architect & Founder, Carbon Craft Design

Dcode

A Times Group Initiative

**DESIGN
BIENNALE**

**INDIA'S
FIRST**

**CURATED
VIRTUAL
ART**

AND

**DESIGN
FESTIVAL**

**JAIPUR
EDITION**

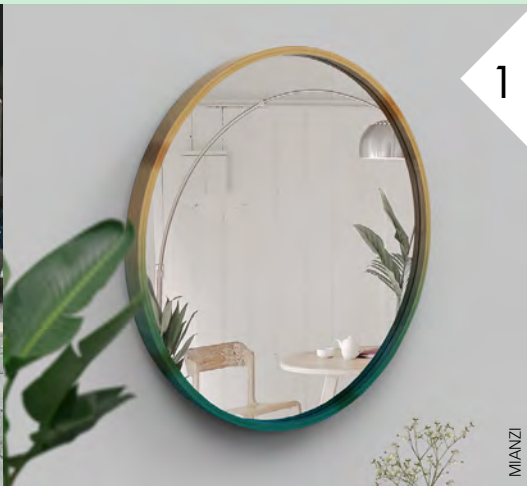
**CURATED BY
SHANTANU GARG**

**TO
PARTICIPATE,
COLLABORATE
AND
KNOW MORE...**

**DM US OR WRITE TO US AT
dcode@wwm.co.in**

HIGH ON YOUR ECO-CONSCIENCE, WE SHOW YOU HOW TO LIVE MORE SUSTAINABLY (READ ETHICALLY) IN THE CITY

FEATURE **SEEMA SREEDHARAN**



1

USE SUSTAINABLE AND NATURAL MATERIALS

Linen, bamboo, hemp and organic cotton bedding and fabrics are produced without the use of pesticides and chemicals. Both linen and hemp are extremely durable fabrics which should last a lifetime. Look out for ethical options like cork, bamboo, banana fibre, recycled/sustainable timber. Cork is probably one of the most naturally sustainable materials, regenerating itself regularly, growing back under the bark of the tree after it has been harvested. Brands like Corkiza, Malai and Mianzi are doing some really interesting work.

2

MIND YOUR TRASH

Reducing the number of resources used in your everyday life is the next step in the resource management hierarchy. Start small, you can reduce your energy usage, water usage along with reducing your garbage, food waste, plastic and even paper. "I have a one-year-old daughter, but I've refused to use diapers or wipes. It's inconvenient, but makes a lot of difference," says architect Anjali Mangalgi.



3

USE LOW OR NON-VOC PAINTS

Traditionally, household paints contained VOC's - 'Volatile organic compounds' - or chemicals which gave them their strong smell which could be toxic and in some cases cause ill health. Many companies started producing low-VOC paints. Low, however, only actually means compared to other paints on the market. Opt for Zero VOC paints (which technically means that VOC content is negligible). Brands like Dulux, Nerolac and Asian Paints, have their own range of eco-friendly paints.





4

GROW YOUR OWN FOOD

"Graduate from just a herb garden in your kitchen or balcony to urban farming," says architect Prashant Chauhan of Zero9 who has recently made the shift. Nothing beats the joy and taste of homegrown, home-cooked food. If you are sceptical about taking the plunge, brands like Bengaluru-based Greenopia and Delhi-based Edible Routes supply urban farming kits and even help manage your private garden. "As urban consumers, we have grown up with the illusion that growing food is someone else's responsibility," says farming consultant Kapil Mandawewala, Founder, Edible Routes. "That's one belief that needs to change, now more than ever."

START COMPOSTING

A recent estimate from the Environmental Protection Agency predicted that up to one-fourth of all landfill waste could have been thrown into the compost. It's amazing to think that a quarter of our waste could be turned into nutrient-rich soil. And then gone are the days when the composting bins were an unsightly, smelly mess. Designed brands like Daily Dump have some really cool options you can choose from. "Every day our customers keep tonnes of organic waste out of the landfill with absolutely no cost to the government," informs Poonam Bir Kasturi, Founder, Daily Dump.



5



6

SAY NO TO PLASTIC

Plastic seems to have found its way into every single aspect of our lives. However, giving it up isn't as difficult as you think – bring a canvas bag with you when you go shopping, buy your fruit and veg loose and stop buying bottled water. "Use plastic substitutes like cloth bags, bamboo toothbrush, straws, reusable bottles instead of anything plastic," says architect Anjali Mangalgiri.



LIVING IN THE LAP OF NATURE

With due respect to the planet, we take a look at viable conservational and building methods for countryside homes

FEATURE **SEEMA SREEDHARAN**



PROJECT: HUMMING TREE. PHOTOGRAPH: JUSTIN SEBASTIAN



PROJECT: THE VRINDAVAN PROJECT

USE LOCALLY-SOURCED MATERIALS

Using local materials has the obvious benefit of reducing the significant environmental impact of transporting materials long distances. It has some fewer tangible benefits as well, such as encouraging vernacular building styles and supporting the local economy. Architect Mohammed Afnan of Humming Tree who recently completed a family home in Kerala elucidates, "We convinced our clients of the benefits of using contextual materials. For instance, we used clay, terracotta and reclaimed wood." When you build a home, construct it with material found within a one-kilometre radius of your site.

USE OF VERNACULAR BUILDING TECHNIQUES

Architect Ranjeet Mukherjee of The Vrindavan Project used the indigenous method of hand-rammed walls, held in-situ using a shuttering assembly in a recently completed farmhouse in rural Maharashtra. "Since the entire operation requires only human energy and basic raw materials, this method is naturally low in carbon footprint, as well as economically feasible," informs architect Ranjeet. Contextual architecture is there for a reason, it respects the topography, the materiality and the climate of the region. Remember building to last is the most sustainable option.



123RF

INSTALL SOLAR PANELS

Solar energy is inherently more sustainable than fossil fuel energy sources. Although installing solar panels on the roof of your house may seem like a major investment at first, once you notice the significant savings on your electricity bill, you will realise why the world is turning to solar energy for a clean source of energy.



123RF

OPT FOR RAINWATER HARVESTING

"The first structure we built was a rainwater harvesting tank that is used till today to water the trees and meet all the household needs," says architect Clement Demello enforcing the importance of rainwater harvesting. Rainwater harvesting can effectively help to prevent using tap water for additional uses, such as gardening, washing vehicles, and even as a backup in droughts.



PROJECT: DE EARTH ARCHITECTS

OPT FOR NATURAL COOLING AND HEATING TECHNIQUES

Architect Gauri Satam of unTAG Architecture illustrates the example of a recent project they built for a paddy farmer in Dakivali, Maharashtra, "We ensured that all spaces have cross-ventilation to keep the home ambient and airy throughout the year - a must for the region's tropical climate. Optimal amount of sunlight was ensured using passive solar strategies like the appropriate size of openings with the right overhangs. Similar views are echoed by Vivek P P of De Earth, "We used a mix of steel and clay roof tiles to reduce the heat inside the built-up space. Adaptive reuse of jalis and traditional windows aids in temperature control."



PROJECT: ARCHITECT HRISHIKESH MORE
PHOTOGRAPH: MISHAL PARDIWALA

USE RECYCLED OR RENEWABLE MATERIALS

While locally-sourced materials should be a practice, one should also think of recycled or renewable materials. Case in point the farmhouse designed by architect Hrishikesh More, who fashioned the entire house out of repurposed shipping containers. Compared to other recycled or eco-friendly materials, shipping containers are more durable and tough. Every time a container is recycled, thousands of kilograms of steel are repurposed. "The added advantage is that a container eliminates the use of other building materials which reduces the overall carbon footprint," says Hrishikesh.

Meal Appeal

We eat with our eyes. And so we decided to celebrate each meal for seven days straight. Shreya Gupta, Founder, Fig & Fleur, shows us how to bring nature's bounty to every table setup!

FEATURE **AVRIL NOEL D'SOUZA**



**BREAKFAST
IN BED**



**BRUNCH
MUNCH**



**SWEET
CRAVINGS**

BREAKFAST IN BED

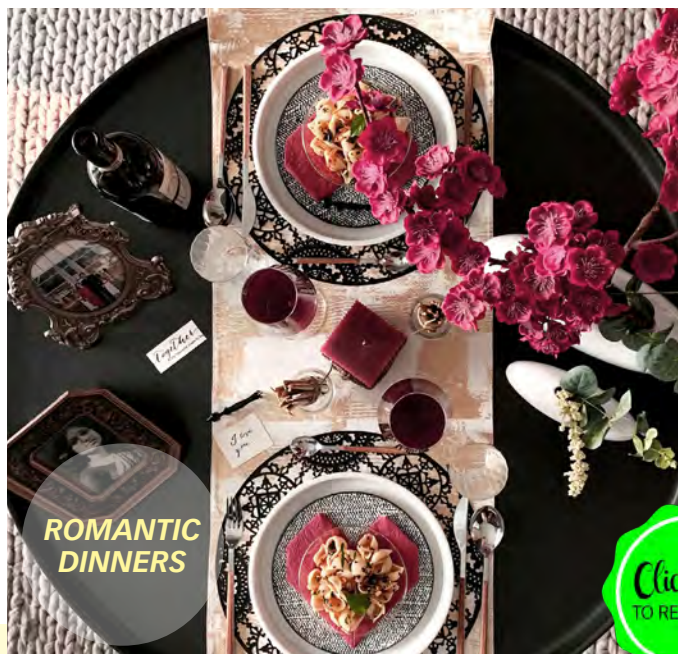
If quarantine has taught us anything, it is to pace and enjoy this meal. We love Shreya's take on brekkie in bed.

BRUNCH MUNCH

Snacking has become an activity, so Shreya brings us the ultimate tropical-inspired table. Fresh fruit, hand-squeezed juices...oh heavens!

SWEET CRAVINGS

Grabbing a chocolate from the fridge can't really be referred to as "enjoying dessert"! Shreya shows us how to indulge, buffet-style.



ROMANTIC DINNERS

ROMANTIC DINNERS

Celebrate your better halves and the quiet time you get to spend with them. Go all out, make it a fancy fine-dining affair!

AFTERNOON TEA

Inspired by our longing for sitting out in the sun and enjoying a cuppa, Shreya suggests an English tea setup!

BABY'S DAY IN

Shreya has created a fun, colourful table for the little ones, that'll keep 'em engaged through the meal.



AFTERNOON TEA

Click here TO READ MORE



BABY'S DAY IN



This cinema-lovers' look can be recreated with things found around the house.

MOVIE TIME

GOOD VIBES ONLY

We all need to motor on and surround ourselves with things that bring about a positive change. And fresh peach is a great place to start from.



State of mind

We explore the spectrum of style with stationery! Sanjyt Singh encapsulates what's on our minds with colours, swatches and typography!

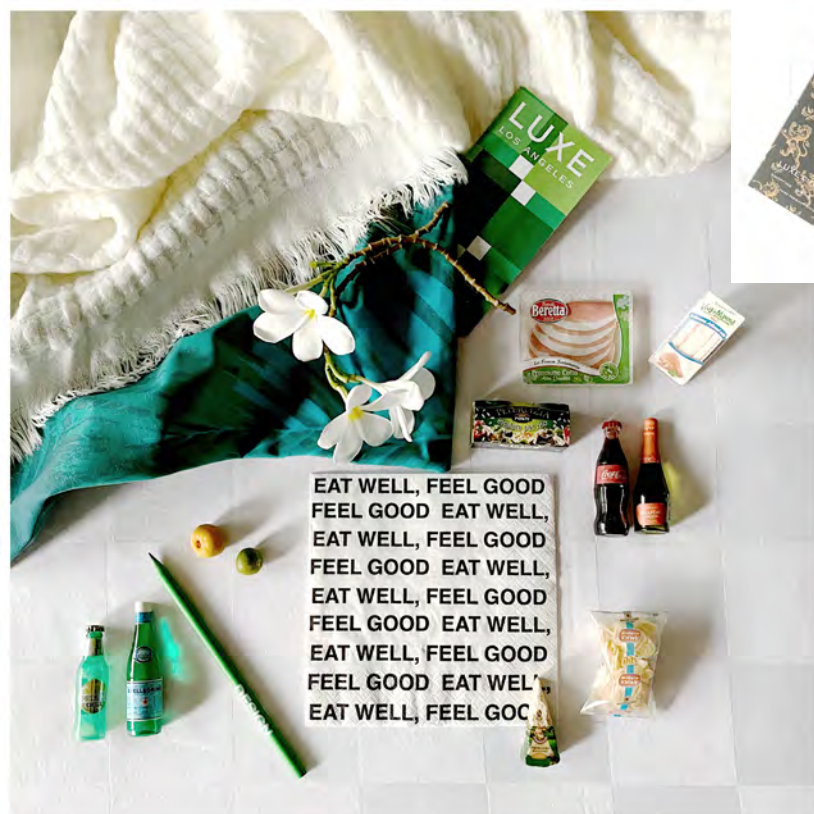
FEATURE **AVRIL NOEL D'SOUZA**



**BREATHE IN,
BREATHE OUT**

And while motoring on is key, it's also important to find different ways to take a pause now and again. Blue reminds us of the sea, sky and wind.

"Keep your eye on the road, and your hands up on the wheel," in the lyrics of The Doors, we find our work-mode tune. The tone of this colour reminds us it can be both luxe and pop. Which way do you lean?



We've touched upon positivity and a refreshing avatar, now, let's not forget our rambunctious selves. This look captures the fun and quirk we would all love to bring indoors!

Breeze and a hammock, that's us alright! This mood brings home such a laidback and relaxing cheer, and that's something we could all use about now. Are you with us?



A RETREAT TO THE TROPICS OF GOA

What was supposed to be a week-long dash to Goa and back home to Mumbai, turned out to be more than two months, here, in quarantine. But Karishma Bajaj is not complaining, if anything, she is thankful to be spending lockdown in the company of mother nature!

FEATURE **AVRIL NOEL D'SOUZA** PHOTOGRAPHS **COURTESY KARISHMA BAJAJ**



There's a forest in the back, which makes things interesting. Sometimes I see peacocks, and occasionally wild boars! I have everything I need to be comfortable and functional, but I also have that magical wilderness vibe at hand.

— Karishma Bajaj, Homeowner



This old Portuguese-Goan home is over a century old. Karishma, the partner at Red Blue & Yellow, acquired this estate three years back. Every month you can find her here, working from home, happily rooted in this paced life.



LIVING UP, ON A SANDY BEACH IN GOA

Architect Meetu Akali of Studio Momo restores a dilapidated old Portuguese-Goan bungalow into a sun-kissed beach house for a Grecian chef, based in Goa, and her son

FEATURE **AVRIL NOEL D'SOUZA** PHOTOGRAPHS **THE ONE SCHOOL GOA**



MEETU AKALI

Founder, Studio Momo

Set up by architect Meetu Akali, Studio Momo specialises in luxury villas and the restoration of Indo-Portuguese houses of Goa. Meetu's approach to design stands out for the environmentally-sensitive approach and the manner with which she puts this passion into creating eco-friendly architecture and interior/exterior finishes. This project is a special one. Thank you for sharing, Meetu!

Located on Anjuna beach in Goa, this beach house measures a humble 200sqm, and sits on a 900sqm property. It's beach view is something Meetu wanted to celebrate in her design transformation.



Initially belonging to a local Goan family, the house was rather small and claustrophobic and didn't maximize the view of the beach. Meetu's clients, Mariketty and her son Spiro love cooking and hosting intimate gatherings which called for a space that was open, breathable and flexible.



IT WAS A CHALLENGE TO CONVERT THIS HOUSE INTO A COSY BEACH ABODE THAT SUITED THE CONTEXT OF ITS SURROUNDINGS. WE AIMED TO CREATE THE FEELING OF A BEACH ON A BEACH.

— Meetu Akali, Founder, Studio Momo



Meetu played on the marriage of vintage designs with distressed textures, and further accentuated the warmth and beach vibe with pops of blue and yellow. Her clever approach to layering complements the sight, sand and surf of Goa.



OUR CLIENTS, MARIKETTY AND HER SON SPIRO LOVE COOKING AND HOSTING INTIMATE GATHERINGS WHICH CALLED FOR A SPACE THAT WAS OPEN, BREATHABLE AND FLEXIBLE.

— Meetu Akali, Founder, Studio Momo



A BOHEMIAN HAVEN

*Singer and theatre actor **Shona Sharma**'s home exudes a warm and earthy air*



“I had an interesting childhood. I remember being surrounded by peacocks, there were monkeys hopping around in the garden, and cattle in our backyard,” reminisces singer Shona Sharma. “Those memories will be with me forever. And it manifests in my personal space. Wherever we move, whether it’s in Mumbai or elsewhere, we fill it up with the earthy bohemian air reminiscent of my childhood. My room becomes an extension of me,” says Shona.

You know what she means when you look around. There’s an unmistakable sense of warmth. Bookshelves laden with books, indoor plants, handcrafted wooden accents, fairy lights, and that warm, musty fragrance of incense sticks. Shona loves to surround herself with things that remind her of her childhood.

“When I come back from work, my room takes me in a warm embrace and instantly puts me at ease. I don’t mind being quarantined in my room. My room is perfect to indulge in my artistic pursuits, or well, for some dolce far niente (the sweetness of doing nothing!)”

“

MY MOTHER LOVED READING ABOUT EUROPEAN AND SCANDINAVIAN CULTURE. MY FATHER TRAVELLED A LOT AND WAS INFLUENCED BY THE HYGGE SENSE OF LIVING. MY AESTHETIC SENSE IS A HEADY MIX OF BOTH.

— Shona Sharma, Singer and theatre actor



WAKING UP IN AN ECLECTIC MUSEUM

Award-winning architect Kavan Shah gives us a guided tour of his jungalow-themed home where an envious curation of art, carefully cultivated foliage and a generous splattering of all things eclectic, co-exist

FEATURE **AVRIL NOEL D'SOUZA** PHOTOGRAPHS **KAVAN SHAH**



“
Open the door, and it's like walking into an art gallery curated with eccentric but extremely tasteful pieces. Colour pops everywhere in my little oasis of lush green.

— Kavan Shah, Homeowner & Founder, Kavan Shah Design Studio



KAVAN SHAH

Founder, Kavan Shah Design Studio

An avant-garde architectural practice based in Mumbai, Kavan Shah Design Studio was founded in 2015. The young architect is a recluse and at the same time dynamic...much like his works. His design legacy is an exciting departure from what conventional ideas of luxury are. He focuses on context, accuracy and bringing to life his client's vision.

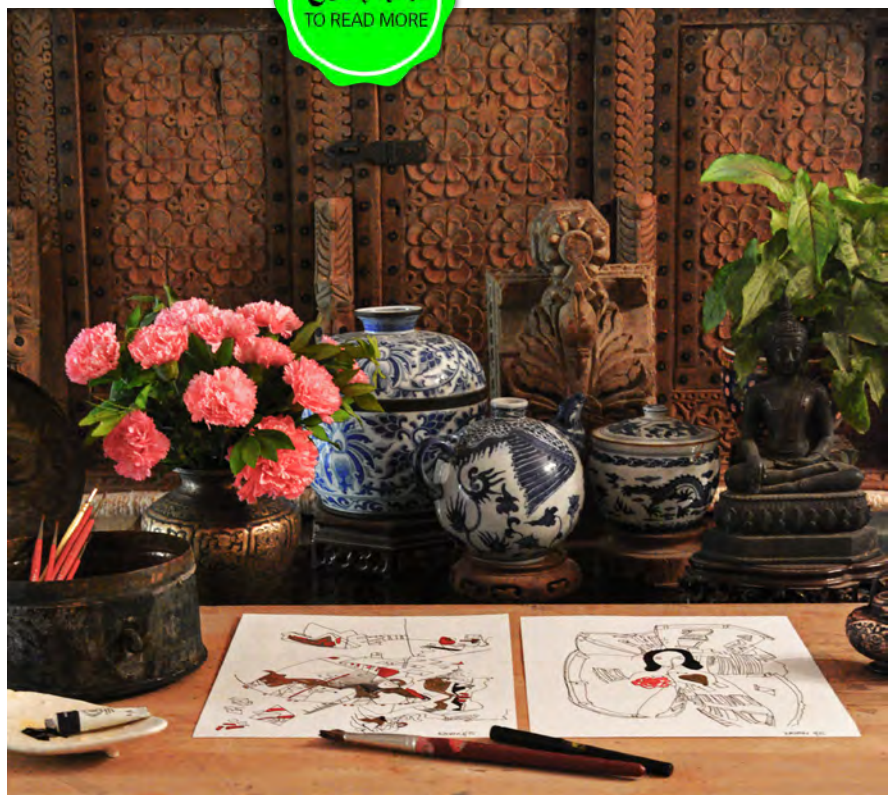
“

My home is an ongoing piece of work. The art is on a constant roller coaster. It is not a museum and it is not static.

— Kavan Shah, Homeowner & Architect

Kavan Shah shares this home with his parents, brother and his sister-in-law. The home is 36 years old and is a treasure trove made up by an astute curation of art, curios and plants. The entire family tends to all the greenery. And we love that about them.

Click here
TO READ MORE



WHEN THE SKY'S THE LIMIT

Priti Tatiya of PTA creates a home that brings nature's beautiful bounty into the very heart and soul of the home. From foliage to colour palette, she has aced the narrative of a tropical haven with a desi twist

FEATURE **AVRIL NOEL D'SOUZA** PHOTOGRAPHS **PIXCEL CRAFT**



“

The garden area is set with an already existing tree which we always wanted to save and involve in our design.

— Priti Tatiya, Founder, PTA Designs



The staircase is the real surprise, it sits between the alanga stone wall, exposed concrete wall with hand painted lotus and is finished in wood.

— Priti Tatiya, Founder, PTA Designs

PRITI TATIYA

Founder, PTA Designs



Priti Tatiya established PTA in 2010. Since then she has shuffled between Pune, Mumbai and Bhopal, before setting anchors in Bhopal. For the past 24 years, Priti and her team of enthusiastic peers have completed a stunning array of projects - residential, housing, hospitality and commercial spaces, including landscaping and architecture.

Telling us about the design approach of this home Priti says, "The intention was to create a contemporary house but with various touches of Indian elements that brings that homely feeling and celebrating various art forms of our soil." She has certainly achieved her vision.



THE MIGHTY BRICK HOUSE

We've lost count of how many bricks have made it to Architect Srijit Srinivas's latest residential project in Kerala. He keeps the canvas raw, and heroes this humble material in ways we've never seen before!

FEATURE **AVRIL NOEL D'SOUZA**

PHOTOGRAPHS **PRASANTH MOHAN/ RUNNING STUDIOS**



SRIJIT SRINIVAS

Founder, Srijit Srinivas - ARCHITECTS

Based in Trivandrum, Kerala, Srijit Srinivas is an award-winning architect. He established his eponymous design atelier with the intention to champion structures with timeless value. His incredible span of work includes residential, commercial, hospitality and a host of others. This project was completed early this year in February. We are excited to bring you its unique form!

This 4250sqft duplex in Kerala stays true to its roots. Award-winning architect Srijit Srinivas demonstrates the relevance and drama vernacular architecture can bring to the table. And we are all for it!



This home responds to the potential of its site, and to the aspirational requirements of its owners for a home with a restrained architectural design - which is both visually and functionally efficient. Its organic nature stands out in an otherwise urban area.



THIS HOME IS A STORY OF OPEN AND INTERCONNECTED SPACES THAT CHALLENGE THE STANDARD ASSUMPTIONS OF LOAD BEARING BRICK CONSTRUCTIONS. IT BREAKS ALL THE RULES!

— Srijit Srinivas, Founder, Srijit Srinivas - ARCHITECTS





LIVING A LIFE OF WILD ABANDON

Located adjacent of the Tijuca National Park in Rio de Janeiro, Brazil, this home by architect Tom Kundig opens to the wilderness and makes nature an integral part of the living

FEATURE **AVRIL NOEL D'SOUZA** PHOTOGRAPHS **MAÍRA ACAYABA**





PHOTOGRAPH KEN DUNDAS

TOM KUNDIG

Owner & Design Principal, Olson Kundig

Tom Kundig is an owner and design principal of Olson Kundig. Tom has received some of the world's highest design honors, and most recently adding to that stellar line-up, Tom was awarded the AIA Seattle Medal of Honor as well as a Distinguished Alumni Award from the University of Washington.

“

The building hovers above the land and is a platform for the owners to appreciate and enjoy the beautiful Rio landscape.

— Tom Kundig, FAIA, RIBA, Design Principal



The primary goal was to make the house as small as possible in contrast to its tropical jungle setting. The 1500sqft house rises into the rainforest canopy – a secluded hideaway for the couple to retreat to and enjoy nature, books and art.



This house is balanced between the inner and outer space; its constructed structure stands in equality with the landscaped area. The L-formation architectural planning is a result of the sun path and directions. It was done so that most of the areas open up towards North, which works best for the Indian climate.



THE OPEN-ENDED DESIGN NARRATIVE

Architect Vipul Patel and his team of brilliant minds create a home where the rolling gardens interlude with the interiors of the home. Where the greens end, and the living begins, is anyone's guess

FEATURE **AVRIL NOEL D'SOUZA** PHOTOGRAPHS **MAULIK PATEL/ INCLINED STUDIO**



VIPUL PATEL

Founder, VPA

Vipul Patel Architects (VPA) was found in 1994. Since then, VPA has completed various projects in the field of architecture, interior designing, landscape designing and product designing. Aesthetics and practicality are at par in all their works. The projects are an amalgamation of ideas, team work and creativity.

“Coexistence” is a concept that my firm’s designs are based on, especially if responsible for landscape designing as well as architectural planning.

— Vipul Patel, Founder, VPA



THE HOUSE WITH A SMALL COURTYARD

The delicate nature of this petite bungalow by ACE Associates in Gujarat, blurs the lines between the outdoors and indoors

FEATURE **AVRIL NOEL D'SOUZA**
PHOTOGRAPHS **MAULIK PATEL/ INCLINED STUDIO**



ACE ASSOCIATES

Ashish Patel, Nikhil Patel, Nilesh Dalsania, Vasudev Sheta, Co-founders

Established in 1999, architects Ashish Patel, Nikhil Patel, Nilesh Dalsania and interior designer Vasudev Sheta, are the core of ACE Associates. The design atelier is borne out of their long academic associations with each other. The firm is made up of young architects who are constantly pushing the envelope when it comes to design - be it residential, commercial, etc.



“
**THE SMALL COURTYARD
IS CARVED OUT ON EAST
SIDE OF THE HOUSE. IT IS A
VISUAL FEAST WHEREEVER
YOU MOVE IN THE HOUSE.**

— **Ashish Patel**, Co-founder, ACE Associates

This 4200sqft bungalow is for a family of three. The owners approached ACE Associates with the brief of creating a simple home that was functional and interactive. The central courtyard is the hero of this house, as every area opens to it. It's a great example of scale.



SIMPLE LIVING

Drenched in shades of blonde and ashwood with some touches of oak, this four-bhk bungalow by Designer's Circle reminds us that a bare-minimal interior can also exude luxury

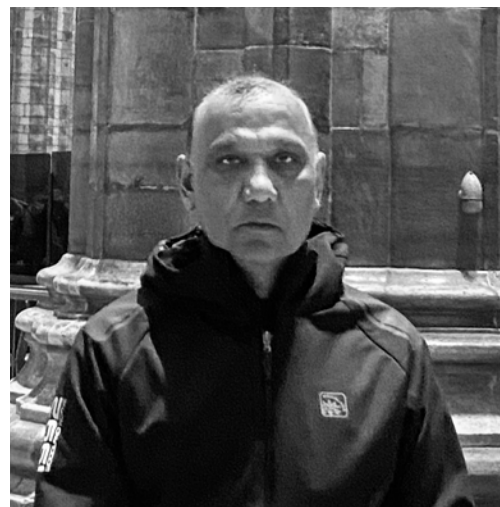
FEATURE **AVRIL NOEL D'SOUZA**

PHOTOGRAPHS **MAULIK PATEL/ INCLINED STUDIO**



This home is a great example of minimalism. In look and in function. There is a purpose for every piece of furniture, colour tone, and art work... right down to the area rugs. Rajesh Sheth, Founder, Designer's Circle takes us closer to nature with this fuss-free design approach!





RAJESH SHETH

Founder, Designer's Circle

Formed in the year of 1987 by Rajesh Sheth, Designer's Circle is an Ahmedabad-based interior design atelier. The firm believes that a stylish interior can be achieved without spending a huge buck on expensive furniture and fittings. Rajesh tries and persuades his clients to apply more on essentials and less on the decorative.

“
Use of a simple furniture style in all spatial areas puts up well with the status of the house.

— **Rajesh Sheth**, *Founder, Designer's Circle*

The owner's main brief for Rajesh Sheth was that their 4-bhk bungalow had to be user friendly. They didn't want to fall into the trappings of an overtly opulent design...they wanted a home that made them feel closer to nature, they wanted a home that had the au naturel look and feel.

HILLSIDE GETAWAY

Domineering yet inviting, two stacked volumes sit comfortably, forming a home in the hills designed by KdnD Studio LLP

FEATURE **TINA THAKRAR**

PHOTOGRAPHS **PHOTOGRAPHIX INDIA |**

SEBASTIAN ZACHARIAH



The Shift House is a two-floor residence that celebrates displaced geometry and the environs it's been built in by creating a transparent, uninhibited living experience.





Our design ensured that the earth plan was recessed by the height of at least one floor, so that on approach and entry, the views remain uninterrupted.

— Shobhan Kothari, Partner, KdnD Studio LLP

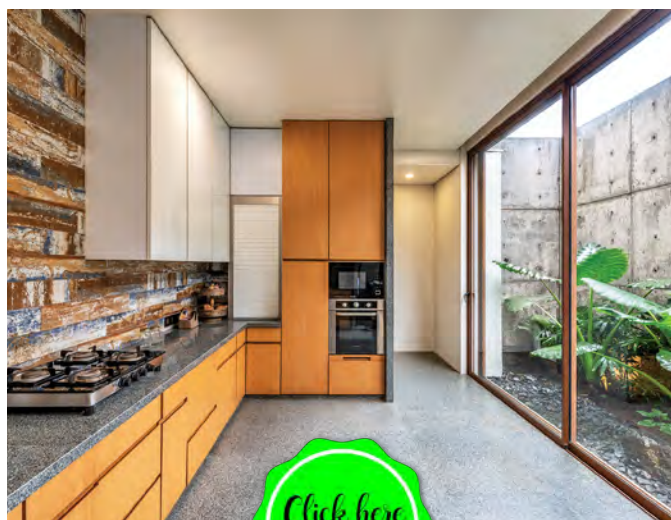


ANAND
MENON
KIRAN
KAPADIA
SHOBHAN
KOTHARI



**Partners,
KdnD Studio LLP**

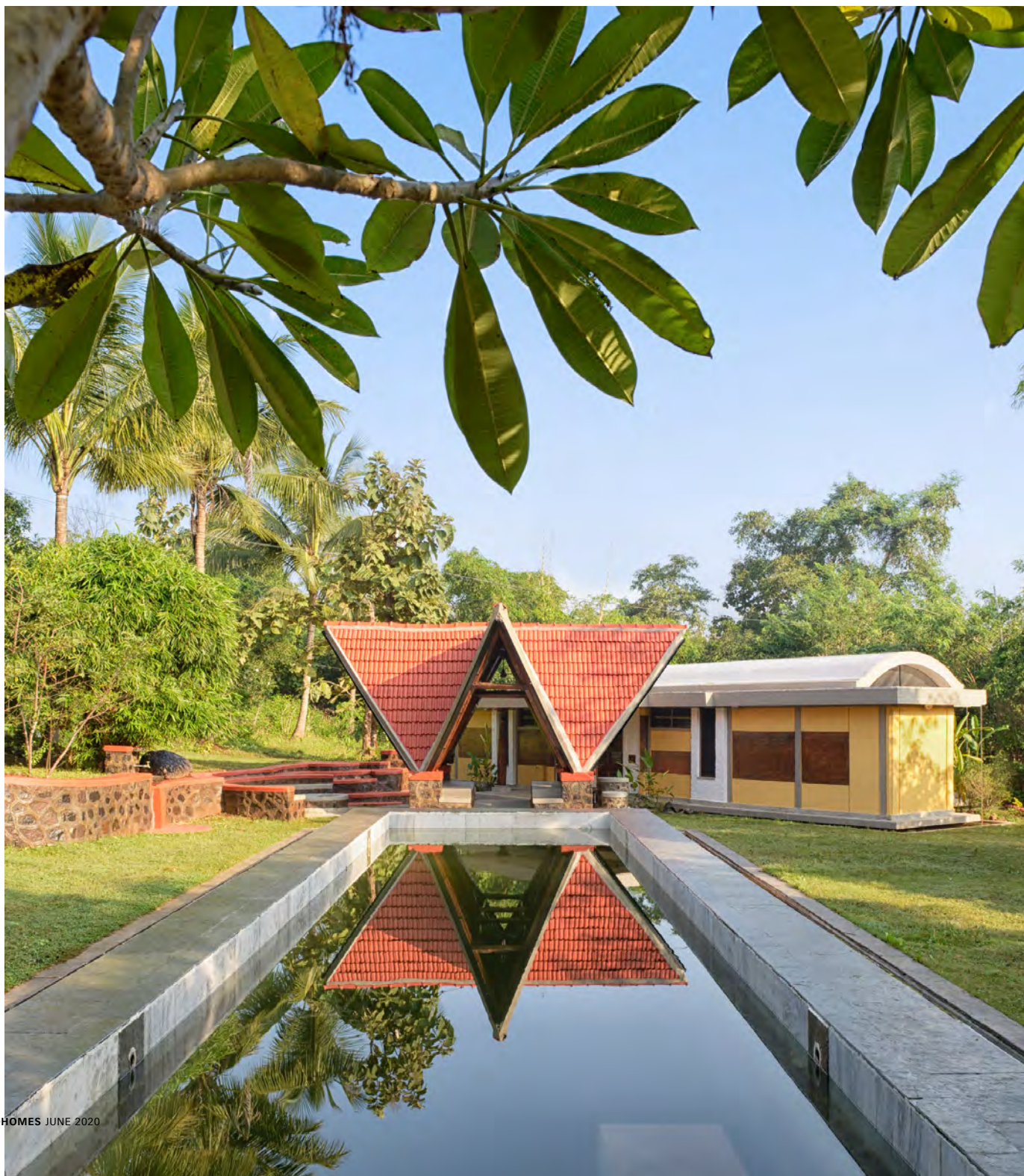
KdnD Studio LLP is a joint venture between architect Kiran Kapadia of Kapadia Associates, and architects Anand Menon and Shobhan Kothari of ADND. The eight-year-old creative collaboration has resulted in some unique residential, corporate, hospitality and retail projects. Each of the partners brings immense industry experience to the design table, striving to do better with every project. The studio treats and approaches design with clarity of thought, as a process of realism.



A LESSON IN SUSTAINABILITY

This private residence in rural Maharashtra engages in a meaningful dialogue with its topography

FEATURE **SEEMA SREEDHARAN** PHOTOGRAPHS COURTESY **THE VRINDAVAN PROJECT**





RANJEET MUKHERJEE SHREENU MUKHERJEE

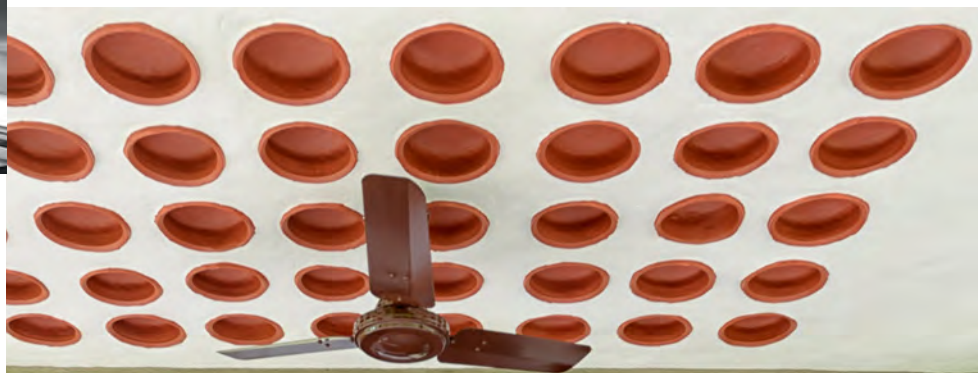
Co-founders, The Vrindavan Project

Ranjeet Mukherjee, an alumnus of The Faculty of Architecture, CEPT University, Ahmedabad, worked in Auroville for nearly five years before he founded the Gurgaon-based design studio 'The Vrindavan Project' in 2012. He calls it a "project" rather than studio as he believes his design practice is an evolving process which grows organically and adapts to each task with complete flexibility.



“
The walls are rammed by hand, in-situ using a shuttering assembly, which is easily dismantled.

— Ranjeet Mukherjee, Co-founder, The Vrindavan Project



The architects used terracotta pots wherever concrete slabs were required. These pots create hollow fillers in a normal slab thickness, minimising concrete content. It creates a waffle effect in the slab that is aesthetically unique, and drastically reduces the dead load of the structure.



Zooco Estudio is a multidisciplinary firm based in Madrid, Spain and founded in 2009 by Miguel Crespo Picot, Javier Guzmán Benito and Sixto Martín Martínez. In a world as changing and transient as today's, Zooco looks for architectural and spatial solutions that stand the test of time, that endure through the constant emergence of trends and fashions. "One of our main objectives is to present design as an added value," says Miguel.

A FARMHOUSE THAT WAS ONCE A STABLE

This home in Güemes, Spain, by Zooco Estudio is designed with utmost respect to its local material landscape

FEATURE **SEEMA SREEDHARAN**



IT WAS ORIGINALLY A STABLE, AND THIS IS REFLECTED IN ITS UNPRETENTIOUS ARCHITECTURE AND A VERY BASIC CONSTRUCTION SYSTEM, BASED ON LOAD-BEARING WALLS.

— Miguel Crespo Picot, Founder, Zooco Estudio



Click here
TO READ MORE

Zooco Estudio's intervention has been developed with absolute respect towards the existing architecture -- both in terms of traditional materiality, and to the type of space created inside the house. The simple, linear design of the house stemmed from the client brief. "It involved refurbishing of an existing structure and the addition of a new annexe," informs Miguel Crespo Picot, Founder Zooco Estudio, " But with minimal intrusions to the existing structure."



With an organic palette, semi-precious and natural stone accents, sprawling water features, the NR home (as they call it) shows a seamless interplay of greenery, textures and eco-friendly materials. The boulders seen here in the living room was found on site, and was integrated into the design.

LUXURY WITH A CONSCIENCE

Designed and owned by Niroop and Rupanna Reddy of NA Architects, this home straddles the two diverse worlds of luxury and sustainability

FEATURE **SEEMA SREEDHARAN** PHOTOGRAPHS **PHX INDIA**





SUSTAINABILITY IS ALWAYS EQUATED WITH BEING SIMPLE AND RUSTIC. WE WANTED TO CHANGE THAT NOTION AND SHOW THE WORLD THAT SUSTAINABILITY CAN BE LUXURIOUS AS WELL."

— **Niroop Reddy**, Co-founder, NA Architects



All the living spaces open out to expansive outdoor spaces, creating a fine interplay of indoor and outdoor spaces. But what's noteworthy is the fact that all terraces and outdoor spaces are equipped with organic vegetation and solar panels, which in turn generate the electricity for the house.



DOWNLOAD YOUR FAVOURITE MAGAZINES FOR FREE!

Stay Indoors. Stay Safe.



ABCD

Beyond Design www.beyonddesign.in

Chaplins Furniture www.chaplins.co.uk

Clarke & Clarke www.clarke-clarke.com

EFGH

Einrichten-design.de

www.einrichten-design.de

Ellementry www.ellementry.com

Shop LG 08, Infiniti Mall, New Link Rd,
Malad West, Mumbai, Maharashtra 400064
91166 12813

Emery Studio www.emery-studio.com,
www.facebook.com/emerystudio

Fig and Fleur www.instagram.com/figandfleurstyle/

FloraFurniture www.florafurniture.co.uk

Godrej Kitchen Systems www.godrejkitchensystems.com

Greenlam www.greenlam.com

IJKL

IDUS www.idus.in/

IOTA Furniture www.iotafurniture.com
1/45 WHS, Block 1, Kirti Nagar, New Delhi,
Delhi 110015, 99584 92212

Iqrup+Ritz www.iqrupandritz.com
392, Electronic City, Phase IV, Udyog Vihar,
Sector 18, Gurugram, Haryana 122015
95991 10672

Jaipur Rugs www.jaipurrugs.com
13 B / C, OPP. Cama Industrial Estate Sunmill
Compound, Lower Parel West, Mumbai,
Maharashtra 400013, 63777 16033

KEPH www.kephdesign.com, 9737950410

MNOP

Mor Décor www.mordecor.com

Pequra www.pequra.com

QRST

1 Reay House, BEST Marg, Colaba, Mumbai,
Maharashtra 400001, 22 48931222

Raw Mango www.rawmango.in

Seetu Kohli Home www.seetukohlihome.com, H 5/2, Haveli, Ambawatta One, Kalka

Das Marg, Behind Qutub Minar, Mehrauli,
New Delhi, Delhi 110030, 99999 66702

Sources Unlimited www.sourcesunlimited.co.in, B-805 Hubtown Solaris, N.S. Phadke
Road, Opp. Telli Gully, Andheri East, Mumbai,
Maharashtra 400069, 22 6210 1700

Surprise Home Linen www.surpriselinen.com, 7, Ratnavali, 1st Gauthan Lane, Santacruz
(West), Mumbai, Maharashtra 400054
22 2649 3123

The French Bedroom Co.

www.thefrenchbedroomcompany.co.uk



GoodHomes INDIA