

HOME & DESIGN

A TIMES OF INDIA PUBLICATION

TRENDS

VOLUME 8 NO 5

10TH ANNIVERSARY ISSUE

10 timeless
spaces
that put
functionality
first

*Design and Drama
with the legendary*

*David
Rockwell*

**Homemade
and handmade**

SUSTAINABLE
OBJECT PROTOTYPES
BY 70+ DESIGNERS
FOR DESIGN TRUST,
HONG KONG

THEN AND NOW

ANDRÉ FU

10+ years of
hospitality design



CONTENTS

FORM AND FUNCTION

10 SPECTACLE

Transformative public interventions that alter perceptions and neighbourhoods

12 PORTFOLIO

Design Trust: Critically Homemade brings 70+ designers on one platform to address global problems with handmade object prototypes

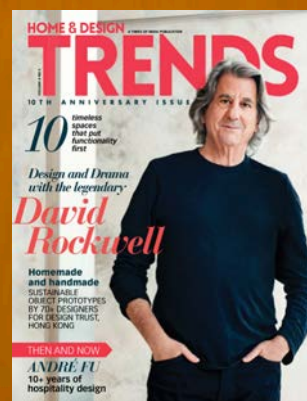
BUILDING CONVERSATIONS

18 COVER STORY

Design, drama and drawing on community experiences with visionary architect and designer David Rockwell

24 DIALOGUES

In conversation with Hong Kong-based interiors architect André Fu



ON THE COVER
David Rockwell
Image: Andrew Boyle

06

DESIGN IN CONTEXT

Products where design blurs the line between art and functionality



18

SCULPTED SPACES Residential

27 MIGHTY MODERN

This opulent home in Toronto by Rohit Bhoite for Merkaba Homes encompasses all the modern-day needs of a millennial

30 RENEWED LIVING

Shuonya Nava Designs promotes serene living with pared-back aesthetics and voluminous design

33 NATURE'S BOUNTY

This family residence in Chandigarh by Studio Ardete capitalises on its view

36 A PIECE OF BALI, IN MANGALORE

RGP Architects revisits the traditional Mangalorean Guthu Mane structure to create a tropical haven

39 DESIGNED TO SOOTHE

The shades of oatmeal and beige that bathe this Ahmedabad bungalow by Designer's Circle give it a calm appeal

Commercial

42 FOR FREE THINKERS

The design of the new Sid Lee office by Olson Kundig is apt for the branding firm's collective working style

45 A BOLD EXPERIMENT

The spatial treatment of this furniture store by FADD Studio introduces one setting after another to discerning buyers

48 DINING DRAMA

Rika by Maia Design in Park Hyatt Hyderabad plays on the unique concept of adding theatre to the simple act of dining

51 PLACE OF PRIDE

Jason Wadhvani redesigns his work cabin in the lockdown phase, with the inclusion of some personal favourites

54 HOME EXPERIENCE

Mira Design Studio designs an inviting office for a builder by creating an interesting interplay of colours, patterns and forms



39



45



We've heard enough about the new normal, isolation, lockdown, and the ensuing uncertainties. But let's focus on the positives this time. As the world went into lockdown, instead of becoming complacent and resigning to the situation, we collectively rose to the situation. Reacting and connecting in ways we'd never thought possible.

While we think that the world has come to a standstill, I am of the opinion that right now, we are just about poised for a growth trajectory. Especially in the design segment. Think about it, we are doing virtual events, talking collaborative design, we are more aware of the need for a sustainable way of thinking. It's as if the lockdown has propelled us a little into the future. All we have to do now is keep up with this momentum.

Well, I'd like to leave you with that thought.

Meanwhile, in this issue, we get you up, close and personal with design legends David Rockwell and André Fu. Plus our edit of design marvels — residences, commercial spaces and products.

Happy reading.

Seema Sreedharan
Editor

HOME & DESIGN TRENDS

High-end Indian and International Homes, Extraordinary Architects & Designers, Best in Product Designs, Celebrated Guest Columnists, Latest Commercial Spaces, New Properties and more. Your authoritative guide to architecture and design is now on the web.



FOLLOW US ON

f Home & Design TRENDS
@ trendsmagind
TrendsMagIndia

E-MAGS AVAILABLE ON



CHIEF EXECUTIVE OFFICER
DEEPAK LAMBA

EDITOR IN CHIEF
RONITAA ITALIA

Editor	Seema Sreedharan
Associate Editor	Avril Noel D'Souza
Senior Features Editor	Tina Thakrar
Senior Digital Writer	Nitija Immanuel
Deputy Art Director	Shalaka Shinde
Senior Graphic Designer	Anushree Kumar
Senior Editorial Coordinator	Harshal Wesavkar
Chief Financial Officer	Subramaniam S.
Head Human Resources	Meghna Puthawala
Head - Experiential Marketing	Aakash Mishra
Content Studio Vice President	Vidyut Patra
Publisher	Joji Varghese
Head Marketing	Priyadarshi Banerjee
Head Digital Solutions	

BUSINESS DIRECTOR
SUNIL WUTHOO
sunil.wuthoo@wwm.co.in

BRAND SOLUTIONS

WEST Mumbai Vice President - Brand Solutions & Business Head - Femina Salon & Spa Gautam Chopra - 9820181757 gautam.chopra@wwm.co.in Pune Ekta Dang - 9763117691 ekta.dang@wwm.co.in Ahmedabad Kamal Rajput - 9925044862 kamal.rajput@wwm.co.in	EAST Assistant Vice President Alka Kakar - 9830331780 alka.kakar@wwm.co.in Kolkata Bijoy Choudhury - 9830187067 bijoy.choudhury@wwm.co.in
SOUTH Vice President South & Business Head - Femina Tamil Pravin Menon - 9840323246 pravin.menon@wwm.co.in	NORTH Vice President - Brand Solutions & Sales Head - Long Form Content Anjali Rathor anjali.rathor@wwm.co.in Delhi / Noida Atif Shakeb - 8860278277 atif.shakeb@wwm.co.in

SUBSCRIPTIONS

Asha Kulkarni, Manager Marketing
asha.kulkarni@wwm.co.in
Call: 18001210005 (All India toll free number)
Associate General Manager (RMD Magazines)
Suparna Sheth - suparna.sheth@timesgroup.com

For subscription, visit: mags.timesgroup.com/home-trends.html

SMS: TRNDSUB to 58888

Mail: subscriptions.wwm@wwm.co.in

Call: 18001210005 (All India toll free number)



Printed and published by Joji Varghese for and on behalf of Worldwide Media Pvt. Ltd. The Times of India Building, 4th floor, Dr. D. N. Road, Mumbai 400001 and printed at Rajhans Enterprise, No. 134, 4th Main Road, Industrial Town, Rajajinagar, Bangalore 560044, India.

The publisher makes every effort to ensure that the magazine's contents are correct. However, we accept no responsibility for any errors or omissions. Unsolicited material, including photographs and transparencies, is submitted entirely at the owner's risk and the publisher accepts no responsibility for its loss or damage.

All material published in Home & Design Trends is protected by copyright and unauthorized reproduction in part or full is forbidden.

CIN: U22120MH2003PTC142239



What is design?

This is one of those perennial questions I tend to sit with for days. And each time, I draw out an answer or a conclusion or inference that suits whatever frame of mind I'm in. To put it simply, the answer is different each time, and I'm okay with that. Because I realise that design, by its very nature, is at the centre of evolution, and I'd be quite disappointed if I was stuck with the exact same answer over the years.

At the outset, I also believe very strongly that there's a designer in each one of us. And as individuals, each one of us has a unique and ever-changing understanding of what design means to us. The way we live, the things we do, our belief systems, the choices we make...most of it is by design. That makes it almost existential, doesn't it? Of course, it does! In fact, that's the whole point.

I remember this conversation I had, not very long ago, with the legendary BV Doshi, where he debunked every single canon about design, expressing the implicit need to break out of the neat and tidy box that we unwittingly assume design is all about. As I sat there thoroughly engrossed in his anecdotes on how he loves to think and create like a child again, I realised how carried away we tend to get in our own pressing needs to define things in order to understand them.

That brings me back to exactly where I started. I believe, with every issue of Home & Design TRENDS, we make an honest attempt to bring different versions, avatars, interpretations and renditions of design to you. It has been 10 years since the very first issue, and yes, while a lot has changed over the years, I do believe that for us the things that matter are, more or less, still the same.

Here's to the next decade of HDT with you!

A handwritten signature in cursive script, reading 'Ronitaa'.

Ronitaa R. Italia
Editor in Chief

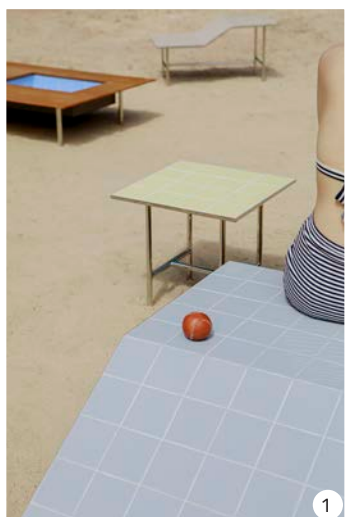
DESIGN IN CONTEXT

Products where design blurs the lines between art and functionality

Text **TINA THAKRAR**

'POOL' TABLES

When we use the power of imagination, we open up new ways of exploring an object and invoking and creating memories. Marcelo Alvarenga and Susana Bastos of ALVA tap into this human power with the Piscinas collection of tables. The Portuguese word for 'swimming pools', Piscinas is made using reused tiles, wood and steel, which cover the 'reality' aspect of the experience. The designers have attempted to strip the normal significance of the tables, and give it new meaning.



2

BOTH IMAGE: STUDIO TERTULIA

- 1. and 2. Piscinas by ALVA
- 3. Bowwater collection by Jan Hendzel Studio
- 4. The Cable Shop Stool
- 5. The Bowwater Chest of Drawers



5



3



4

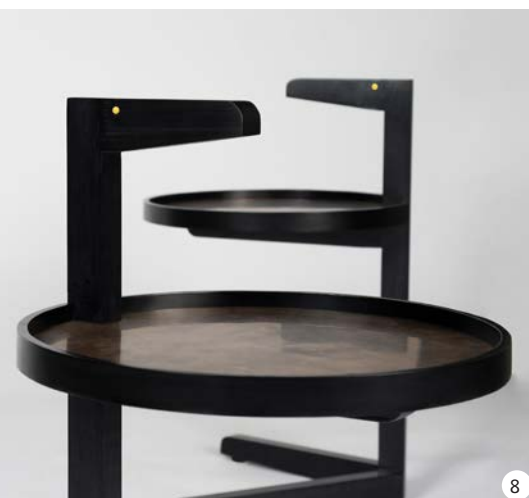
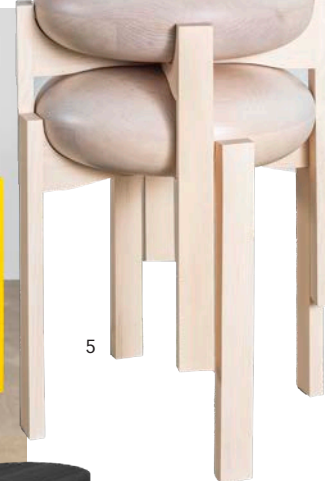
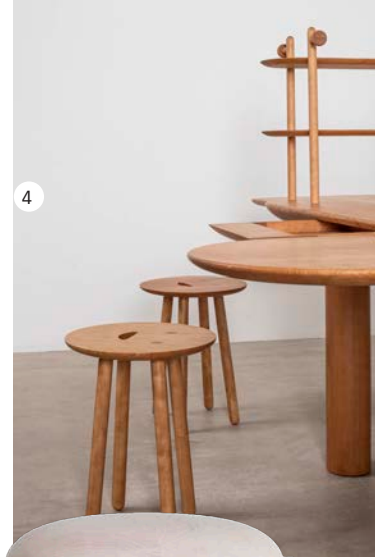
TIMBER TRIALS

London-based furniture brand Jan Hendzel Studio has launched its first-ever full collection of furniture entitled Bowwater. The collection has nine pieces, including sturdy furniture and decorative accessories, all crafted from timbers sourced exclusively from the British woodlands, with a combination of traditional handcrafting and modern digital processes. The collection puts these hardwoods front and centre, highlighting their durability, stability, colours, and signature ripples. ►

FORM AND FUNCTION | *Products*

THE HARDWOOD WAY

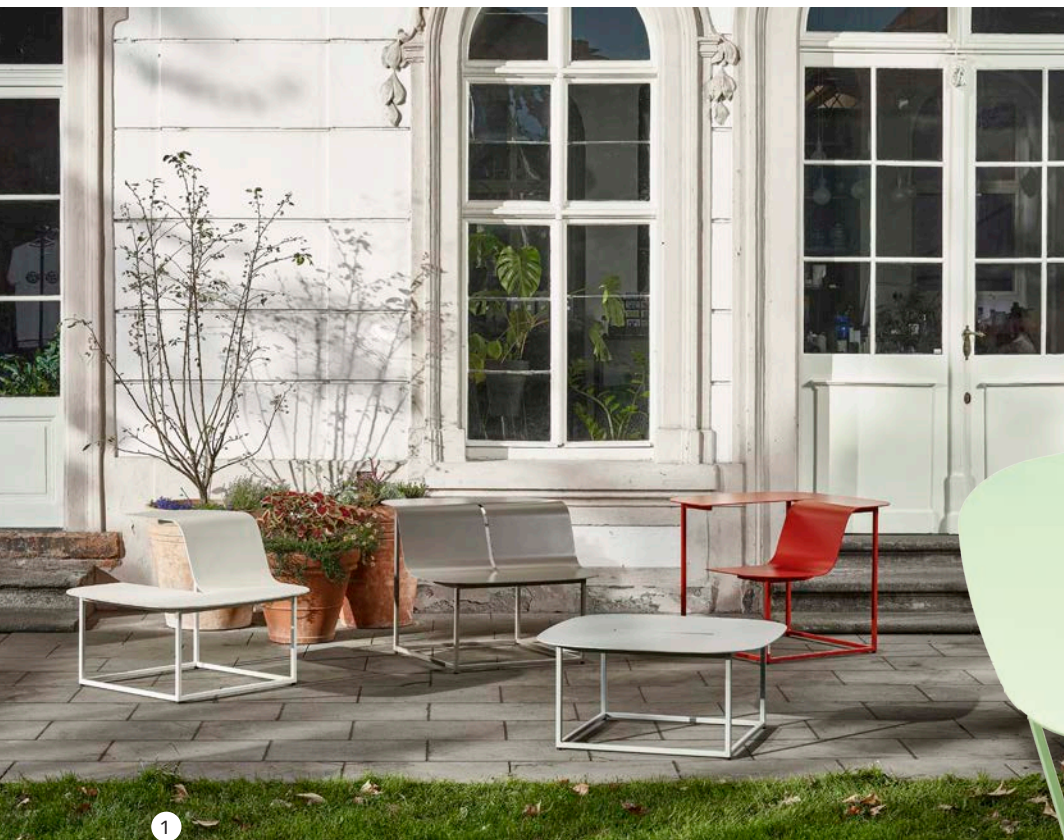
In the lockdown phase, the Design Museum London launched the Connected initiative in collaboration with the American Hardwood Export Council (AHEC) and UK furniture company Benchmark, to seek out how nine popular designers have adapted to global changes in the way they operate and practice design. They were presented with a challenge to design a table and seating for both home and work use. Designers like Ini Archibong, Jamie Hayon, Thomas Heatherwick and Sebastian Herkner came together virtually to create a table and seating each, using sustainable hardwoods. They used only three underused species - red oak, cherry and maple - giving out the message of sustainability and conscious use of natural resources. ►



1. Humble Administrator by Studio Swine
2. Candy Cubicle by Sabine Marcelis
3. Stem by Thomas Heatherwick
4. Mesamachine by Jamie Hayon
5. Nordic Pioneer by Maria Bruun
6. Night Stand by Studio SFDW
7. Drawer Poufs by Studio Wood
8. Flamingo by Esvee Atelier
9. Mausam Desk by Kam Ce Kam

In another first-of-its-kind collaboration, the AHEC announced the REMAKE project - an initiative that joined hands with five Indian furniture designers, namely Studio Wood, Bram Woodcrafting Studio, Kam Ce Kam, Esvee Atelier and Studio SFDW and enabled them to remake three pieces from their existing furniture range exclusively using American hardwoods. The aim of this project, besides promoting the use of hardwood, was to tap into India's furniture manufacturing sector, and give Indian designers an opportunity to work with new materials and broaden their reach across India and the world. ►





1

FOR STREET LIFE

Manta by Lucie Koldova for mmcité may look like a minimal object, but it has a multi-use focus that makes it ideal for all forms of public use. It can function as a seat, bench or desk, and fit into entrance halls, public parks and plazas. It's a modern take on street furniture, transporting the users to their personal oasis of relaxation. It has soft, rounded curves echoing the movement of waves and a strong steel structure.



2

A TO Z OF FUNCTION

Functional, playful and stackable, the Ziggy Table has a unique Z-shaped profile that makes it easy to tuck into different environments. Designed by Brad Ascalon for Hightower, the tables have a triangular design that is comfortable for individual use, and can be placed together to create a hexagonal group table as well. The stool, with its foam top and similar shape, is a comfortable seat. **H&DT**



3



5

4

1. and 2. Manta by Lucie Koldova
3. and 5. Ziggy Table
4. Ziggy Table and Stool



Transform your Space into a Masterpiece

WITH OUR SIGNATURE MARBLE COLLECTION.



WHERE EXCELLENCE IS SET IN STONE

+91 99998 00071



www.aiclassmarble.co.in



/aclassmarble

SPECTACLE

*Transformative public interventions that
alter perceptions and neighbourhoods*

Text **TINA THAKRAR**



Walls, both within and outside our homes, express so much. And when combined with art, the impact is immediate and often transformative. With this as the basis of their collaboration with Asian Paints, St+art India builds on the idea of taking a regular wall and having a local artist transform it into a mouthpiece for urban interventions. These three works of art by up and coming artists across the country touch upon our homes and communities, and the emotions that reside within them.

1. A mural at The Assam Forest School by H11235 in Guwahati. Created for Donate a Wall initiative by St+art India in collaboration with Asian Paints and XXL Collective
2. Cavari/Ride by SS108 in Chennai. Created for St+art Chennai festival this year
3. Old to New by Nikunj Prajapati and Khatra in New Delhi. Created for Donate a Wall initiative by St+art India in collaboration with Asian Paints and XXL Collective





Truly original surfaces created with an eclectic mix of traditional techniques
and materials from around the world and across history.



T. +91 9983800036 | www.orvi.com | sales@orvi.com | Instagram:/orvisurfaces | Facebook:/orvisurfaces

MADE BY HAND

Design Trust: Critically Homemade brings 70+ designers on one platform to address global problems with handmade object prototypes

Text TINA THAKRAR



1. Pocket Garden by Julie Progin and Jesse McLin, Julie & Jessie
2. Future Fossils by Natasza Minasiewicz

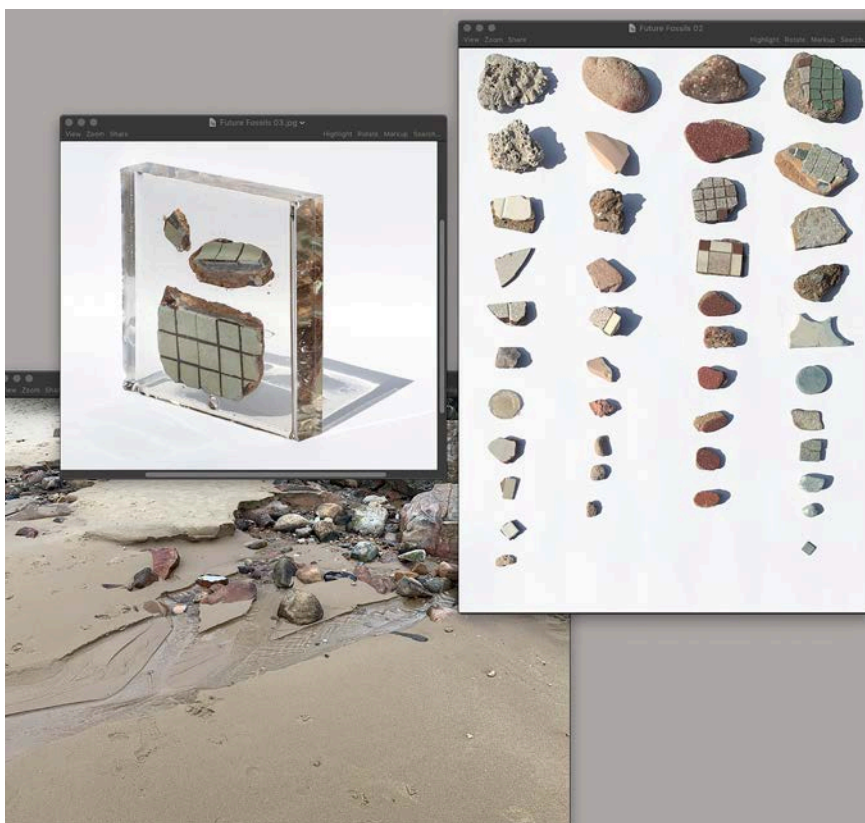
1

"THE desire to make things with our hands is universal and a significant human expression.

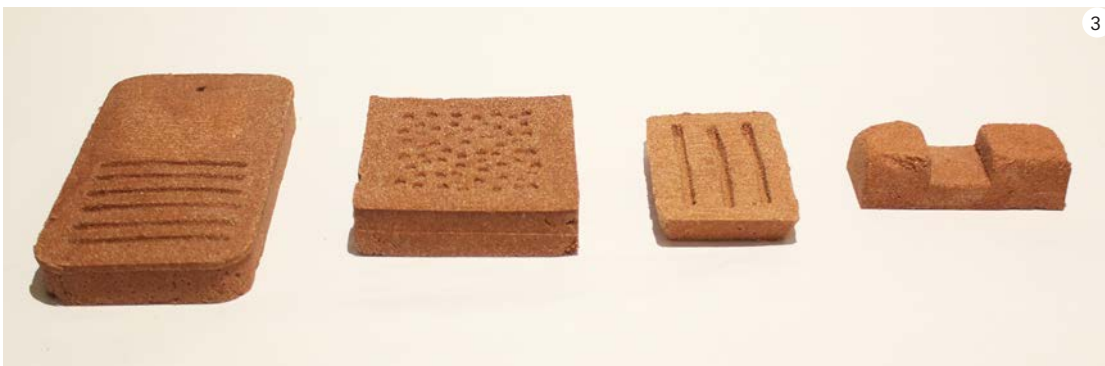
While some handicrafts are means of survival, making objects with our hands serves as a creative release," explains Marisa Yiu, Co-founder and Executive Director of Design Trust, Hong Kong and Lead Curator of the community group's latest project, Design Trust: Critically Homemade. Her words ring absolutely true for this initiative, which was aimed at bringing the local and international design community together during the pandemic and address critical social and environmental needs through creative thinking.

The unique challenge of this project, that every one of the 70+ participants thrived on, was to create resilient, sustainable, homemade prototypes of objects sized at 20 x 20 x 20cm maximum, within three weeks. They were encouraged to look at prevalent problems and use this platform to collaborate and design for a wide-ranging audience.

Invited participants included not only fellows, advisors and mentors of the trust, but also members of the design community from different parts of the globe. An exhibition of prototypes was held this month, after which a handful will be developed into final products and selected to take part in a series of micro-community fundraiser programmes.



2



1. Hoxy by Christopher Choi, Keith Hui and Esther Fung, Ian Tam (ioii Studio)
2. Bambusa by Kristoff Crolla, L-E-A-D
3. Ramel by Alyina Ahmed
4. Dusts Catcher by Adam Hudac



1



2



4



3

1. Second Hand by Kaliz Lee
2. Samurai by Fu Li, UV Architecture
3. Dancing with Nature by UUendy Lau
4. Archi Ceramici Phone Stand by Ida Kwei, IDoArtism



1



3

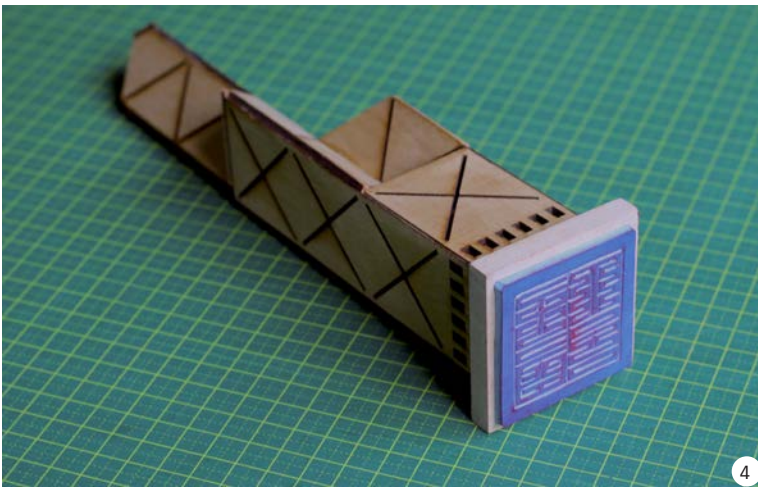


2

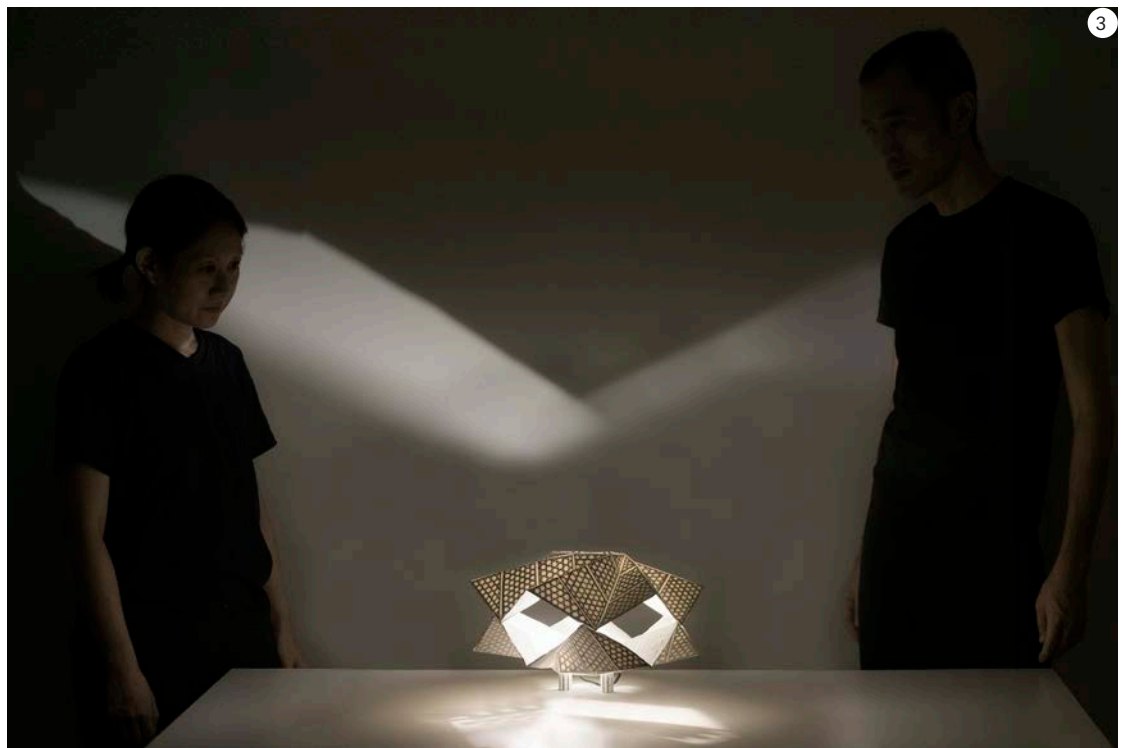
1. The Learning House by people's Architecture Office
2. Back to Basics Food Basket by Zoe Siu, ZOEE
3. Megaphone by Aurelien Barby with Constant HK



1



2



3

1. Tactile Family
by Aron Tsang
and Hera Lui,
NAPP Studio
2. Incomplete
Incense Holder
by Derek Lee,
MOM & POP
3. Light Motions
by Sarah Lee and
Yutaka Yano, SKY
YUTAKA
4. Ink and
Architecture by
Hugh Davies in
collaboration with
Yoko Nakazawa,
Joyce Cheng, and
Nikki Lam, M+



1. CANPlay by Kevin Siu, Shuyan Chan and Bob Pang, AaaM Architects
2. We Can Jump This High by Nikolas Ettel, Lidia Ratoi, and Annie Lye
3. Antibacterial Door Handles by Michael Young
4. World of Interiors by Sam Jacob
5. Object by Fiona Lau, FFIXXED Studio

THE BIG PICTURE

Design, drama and drawing on community experiences with visionary architect and designer David Rockwell

Text **TINA THAKRAR** Profile image **ANDREW BOYLE**

Piano-playing, theatre-loving, Emmy and Tony award-winning, kaleidoscope-collecting, philanthropist and world-renowned architect David Rockwell is not, well, just a world-renowned architect. He's a storyteller, and a compelling one at that, who likes to pull and tug at the root of every project and then put it out there in full bloom, for everyone to experience. He does this for his larger-than-life Broadway sets, majestic hotels and restaurants, conscientious public spaces and experiential theatres, cataloguing a portfolio that spans multiple countries, hundreds of projects and a prolific 35-year-long career.

Rockwell is the founder of Rockwell Group, a multi-disciplinary architecture and design firm that has made its mark with award-winning projects in the spheres of hospitality, culture, education and theatre. Based in New York city, with a satellite office in Madrid, the firm also dabbles in product design as well as modern design innovation. With Rockwell as its spearhead, the company has built some legendary projects like the Dolby Theatre in LA, Nobu restaurants around the globe, TED Theater in Vancouver, The Shed in New York (in collaboration with Diller Scofidio + Renfro), W Hotels in multiple cities and the Marketplace at JFK International Airport. That's not to mention some memorable set designs for *Hairspray*, *Dirty Rotten Scoundrels*, *Legally Blonde*, and the Academy Awards in 2009 and 2010.



(Left)
Nobu Downtown in
New York



IMAGE: ERIC LAIGNEL

Rockwell's biggest asset, in our opinion, has been his curiosity. Stepping out of his comfort zone, taking risks, seeking unfamiliar projects, and adopting new thinking and fresh ideas to deliver design solutions has been key to the plethora of clients and projects he's worked on. Somewhere in there, entwined with his relentless curiosity, is a fascination for well-thought-out impactful environments that bring communities together. We can trace this fascination back to his childhood, when he moved from New Jersey to Guadalajara, Mexico; from a city where people's lives revolved around their homes and backyards to one where all of life took place in public, on the streets.

"My earliest influence was probably the community theatre that my mother ran near our home on the Jersey Shore. I got involved in some of the productions and my deep appreciation for theatricality was born from those experiences.

When I was 11, my parents took me to New York City for the first time. We attended 'Fiddler on the Roof' and we dined at Schrafft's, a now defunct restaurant that was ubiquitous to New York at the time. It was the first time I connected theatre and restaurants as vehicles to bring people together and create instant communities. Since then, I've been fascinated by design as a tool for facilitating connection through shared experiences. I don't think, at that point, I had figured out that it was a career path. But when we moved to Guadalajara, the natural light, not to mention the bold beautiful colours of the marketplace, forever changed my conception of space and experience. Moreover, I came to see the incredible sense of spectacle and ritual that connected all of these different events in public space." Soon after, Rockwell moved back to the United States to study architecture, going on to set up Rockwell Group in 1984.



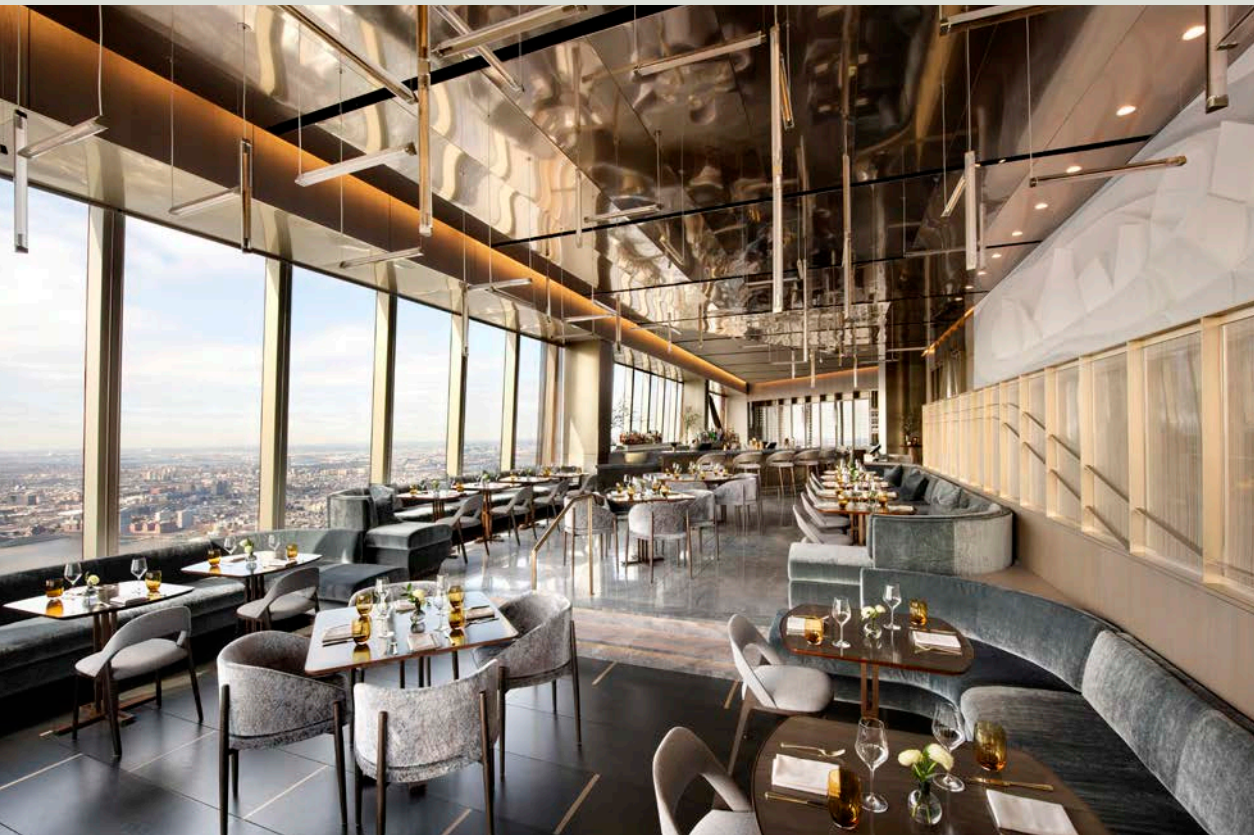
My lifelong love of theatre has given me a real appreciation for the temporal. I've realised it's possible to create impact and memory without massive infrastructure.

– David Rockwell, FAIA, Founder and President, Rockwell Group



Theatrical devices — framing, choreography, scenography, thresholds, transformation and fragmentation — always frame our work. Every project has a “script” to tell.

– David Rockwell, FAIA, Founder and President, Rockwell Group



(Left) Peak is a lounge, restaurant and event space located on the 101st floor of 30 Hudson Yards in New York. Situated just below Peak, Edge (Below) is the highest outdoor sky deck in the Western Hemisphere, and offers 360-degree views of the skyline.

Armed with degrees from Syracuse University and the Architectural Association in London, Rockwell's first breakthrough project was Nobu for Japanese chef Nobu Matsuhisa. It's one of his most treasured, long-term working relationships, spurred by the first restaurant in New York in 1994, which redefined the concept of fine dining by removing the formality of pristine white tablecloths and replacing it with an environment driven by narrative, craftsmanship, and materiality. The brand now has restaurants worldwide, with the addition of Nobu Hotel at Caesars Palace in Las Vegas, and Nobu Hotel Barcelona, all of which have been designed by the Rockwell Group.

After this interesting beginning, hospitality projects slowly became the mainstay of the firm. In every single one, the design teams spend time with the client to understand the backstory and intent, and then look into the context and location before moving on to the design.



BOTH IMAGES: EMILY ANDREWS



IMAGE: CHRISTOPHER PAYNE, TESTIO



IMAGE: NIKOLAS KOENIG

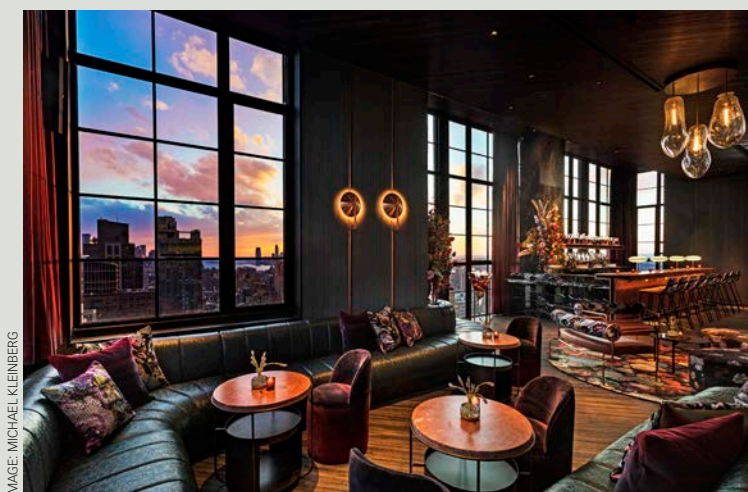


IMAGE: MICHAEL KLEINBERG

He invokes the memory of designing the Moxy Chelsea hotel at this point. "Its location in New York City's Flower District weaves a powerful impression on the three amenities designed by our studio. It's a modern fusion of botanically-inspired elements and Italian Futurism. The Fleur Room, an intimate rooftop bar on the 35th floor of the hotel is one of my favourite spaces. An extruding bronze bar, recalling the chic precision of intimate bars found in Rome or Milan, contrasts floral accents like inverted resin pyramids glowing with embedded bouquets. These design choices may never be consciously recognized by many who encounter the space, but that doesn't mean they won't play on memory, spark specific feelings, and create a lasting impact on the guest experience."

It's this lasting, memorable impact that he works towards, even with the sets he designs. These projects helped him appreciate the temporal; how

something impactful can live on in memory, without a permanent structure to fall back on. The approach is entirely different though, in that he has to study the script, research the story, meet with the director, understand the spatial constraints, and develop an understanding of mechanics and how things move. The space has to keep up with the rhythm of the performance, and it's this dynamism that's exciting for him. It's also what he touches upon in his authored book - *What If? The Architecture and Design of David Rockwell*.

A third side to his work is pro-bono projects that he undertakes often, for organisations like UNICEF, Design Industries Foundation Fighting Aids (DIFFA) and Citymeals-on-Wheels, to improve the quality of life of the underrepresented. It's another way to build a sense of community, and Rockwell is upfront and centre in using his design skills for the greater good. One of his most significant and personal projects here is Imagination Playground, a space that encourages children to imagine and devise their own play areas. The first such setup was opened in Manhattan in 2010, and Rockwell then created smaller models to be transported to children in Bangladesh and Haiti, as part of a UNICEF initiative in collaboration with Disney. Now, a large urban park is the next project on his wish list.

(Top) The Warner Music Group headquarters in Los Angeles
(Above) The Fleur Room at Moxy Chelsea in New York
(Top right) The New York EDITION hotel



Our design choices may not be consciously recognised by many who encounter the space, but that doesn't mean they won't play on memory, spark specific feelings and create a lasting experience.

— David Rockwell, FAIA, Founder and President, Rockwell Group



(Top)
Set design for *She Loves Me*
(Far left) Sage high sofa for Benchmark
(Left) Pass Horizon Cementiles from the David Rockwell collection for Bisazza

IMAGE: GREG COX FOR BUREAU



(Left)
The concept for
Dineout NYC
(Left below)
Hayes Theatre in
New York



IMAGE: PAUL WARCHOL

Rockwell Group is now working on a host of projects around the world - The Clubhouse at The Camellias by DLF in Gurugram; 550 Madison, a mix of hospitality-driven spaces for an office building designed by Philip Johnson; the clubs and suites at New Arena at Seattle Center, 1 Hotel Toronto; Citizens, a new food hall in New York; Moxy South Beach in Miami, and several W Hotels located in the U.S., China, and Spain. In the post pandemic world, he envisions sustainability being of top priority, along with flexibility of use in spaces and objects. Over the last few months, he has also launched DineOut NYC, an adaptable kit of parts that is being adopted by restaurants for safe outdoor dining on the sidewalks and as part of the abutting streetscape.

"I'm also really excited to be working on DRAMA, our new book about the intersection of theatre and

architecture. At their best, design and performance are both tools for connection. As a studio, our goal is to produce empathetic, experiential, humanistic design. These theatrical devices — framing, choreography, scenography, thresholds, transformation and fragmentation — always frame our work (sometimes subtly, sometimes overtly). Every project has a "script" to tell."

While he infuses sets with the directors' storylines, we were curious to learn about the spaces that belong to him, and how they are scripted. His private office, he reveals, is a mash-up of personal and project mementos that mark out his career and his view of the world. It houses his ever-growing kaleidoscope collection, a photograph of his mother and a drawing by the late American architect Lebbeus Woods. It all ties together and is somewhere still a collective of shared experiences. **H&DT**

THE CONTEXTUAL STORYTELLER

In crafting his multi-layered, luxurious hospitality spaces around the globe with his signature finesse, Hong Kong-based interiors architect André Fu has built a career that surpasses boundaries, cultures and conventions

Text TINA THAKRAR

Every space has a story to tell. And Hong Kong-based, Cambridge-bred interiors architect André Fu is determined to tell it the right way. For him, it's about what people experience rather than see, and what they perceive of the story apart from what it says to them directly. Fu is globally renowned for creating lifestyle experiences through hospitality design, in spaces that depict overlays of cultures and styles, giving travellers the global experience they're looking for, with a hint of the comforts of home.

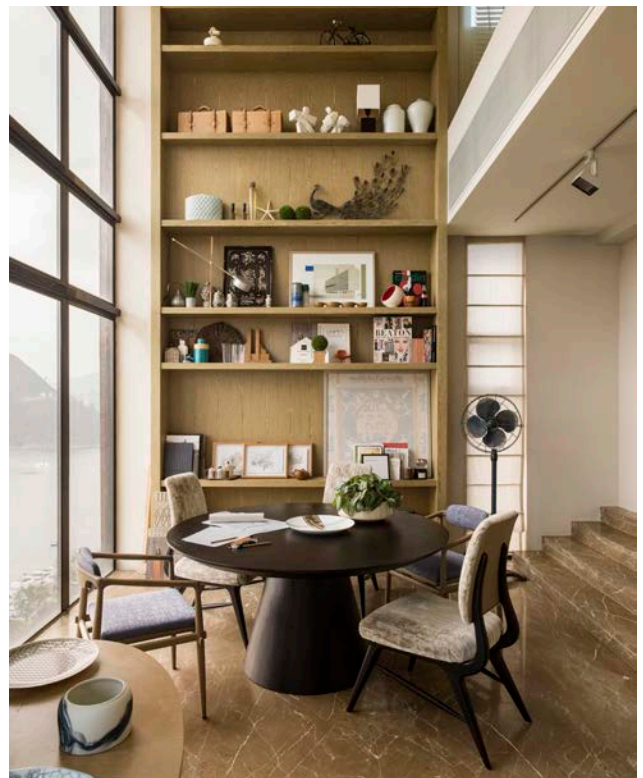
André Fu is the founder of design studio AFSO and lifestyle products brand André Fu Living. He rose to prominence in the world of hospitality design as well as in distinguished design communities in Europe and Asia with the multi award-winning The Upper House in Hong Kong. It changed the face of hospitality in not just Hong Kong but all of Asia, and soon, Fu found himself with a portfolio of some of world's grandest hotel projects in the world - The Waldorf Astoria Hotel in Bangkok, The Fullerton Bay Hotel in Singapore, Villa la Coste in Aix-en-Provence, and The St. Regis in Hong Kong, among countless others. The count of awards and accolades tops this list, but Fu revels in his organic creative process through which he'd much rather tell the stories of his clients and brands rather than his own, except maybe in his exquisitely furnished home in Hong Kong. It's what makes his projects as awe-inspiring as they're deemed to be, and as true to their context as they can be.





“Perhaps the underlying value in my work is to embrace a sense of ‘relaxed luxury’. It is about crafting compelling settings that embrace and reflect harmony, beauty and warmth.”

– André Fu, Founder, AFSO and André Fu Living





Fu was born in Hong Kong and raised in England, where he studied art and architecture at the University of Cambridge. He returned to Hong Kong soon after, with cross-cultural insight that he applies splendidly to his projects, using design as his vehicle. This unique flair has now been catalogued in *Crossing Cultures with Design*, a book he has put together with writer Catherine Shaw for a more in-depth exploration into his decade-long career.

"With my upbringing in Asia as well as Europe, and a substantial portfolio of works that span multiple destinations, I trust my approach is not about combining styles; rather, it revolves around a core value to navigate very different cultures and styles and to reflect contemporary culture not based on any one model. The notion of East-meets-West is very much of the past, whilst the value of cultures and how it influences our lives has always been a core aspect of my work," explains Fu, who has loved experiencing hotels ever since he was a teenager. The observation of the use of colours, textures and spatial proportions put together by other designers and that he found mesmerising, has now rendered him a veteran at curating experiences that are location specific and unique.

A story is best told when there are elements that tie it together. Fu's projects are much the same; he imparts the same attention to detail to every piece of furniture and lighting as he does to the built structure, imbuing it all with a sense of 'relaxed luxury'. More recently, bringing his own style to the fore, Fu launched André Fu Living, a lifestyle collection of beautiful homeware and decorative accessories.

"It is a project that is truthful to my personal aesthetics and story and encapsulates the key elements of my style. In many ways, the evolving collection is deeply inspired by my childhood memories of significant places and different cultures. It celebrates my own nomadic life and my personal experience of the world of hospitality."

He may be working on an array of projects in a number of cities - Monaco, London, Bangkok, Singapore, Hong Kong and Osaka, as well as the awaited opening of The Mitsui, a property nestled in the heart of Kyoto with a vision to 'celebrate Japanese beauty' - but his sense of exploration remains unabated. These are projects that sometimes take years to see the light of day, but for this designer, it's a chance to learn more about the world and the people in it, and tell their story the right way. **H&DT**

Previous page:
(Top) Library at Artus Hong Kong
(Below left) Tableware from André Fu Living
(Below right) André Fu's own apartment in Deep Water Bay Hong Kong
This page:
(Above left) Lower lobby at the Waldorf Astoria, Bangkok
(Above) The sky lounge at The Upper House, Hong Kong

SCULPTED SPACES | *Residential*

MIGHTY MODERN

*With sleek profiles and soft curves, this opulent home in Toronto by **Rohit Bhoite** for Merkaba Homes encompasses all the modern-day needs of a millennial*

Text **TINA THAKRAR** Images **MORPH STUDIOS**

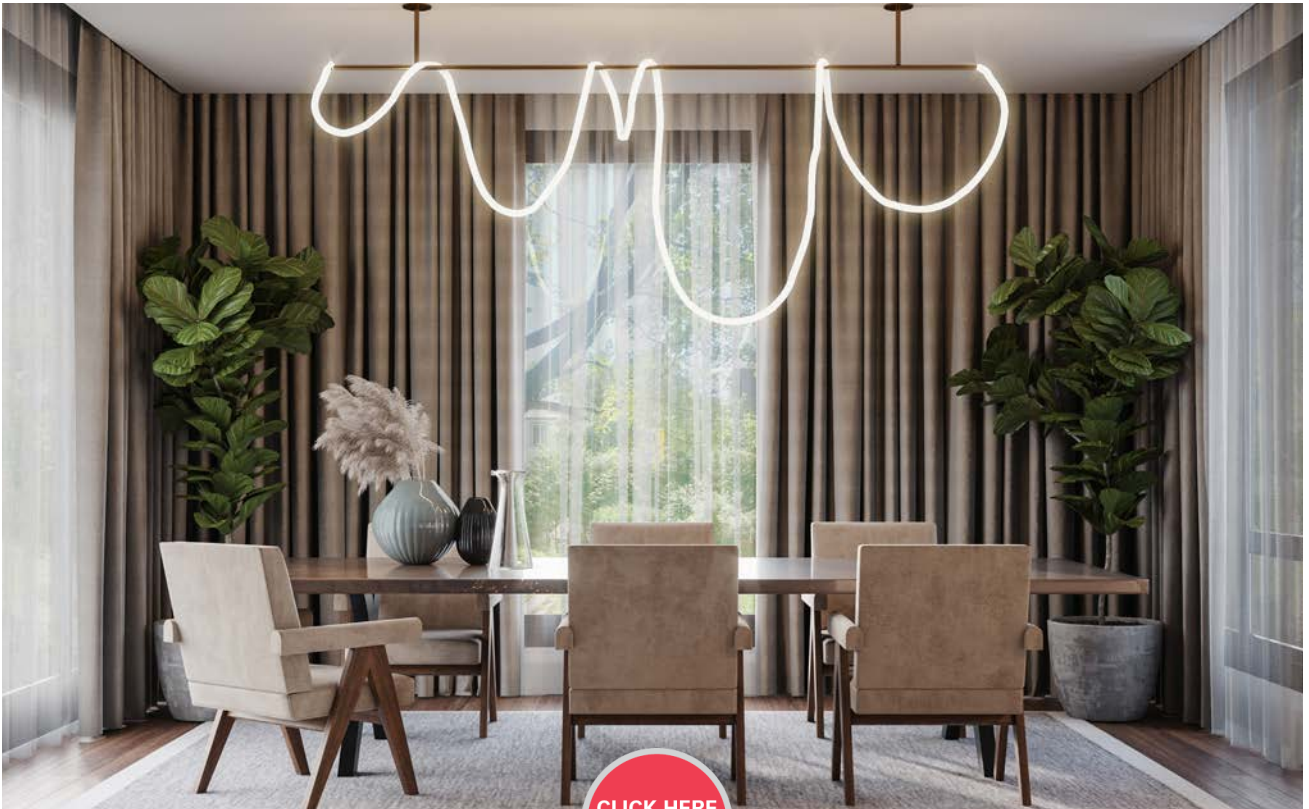


"A house is one's sanctuary of dreams, emotions and hope. What better way to bring this etymology to life than with this property in Lawrence Park, Toronto, which expresses just that."

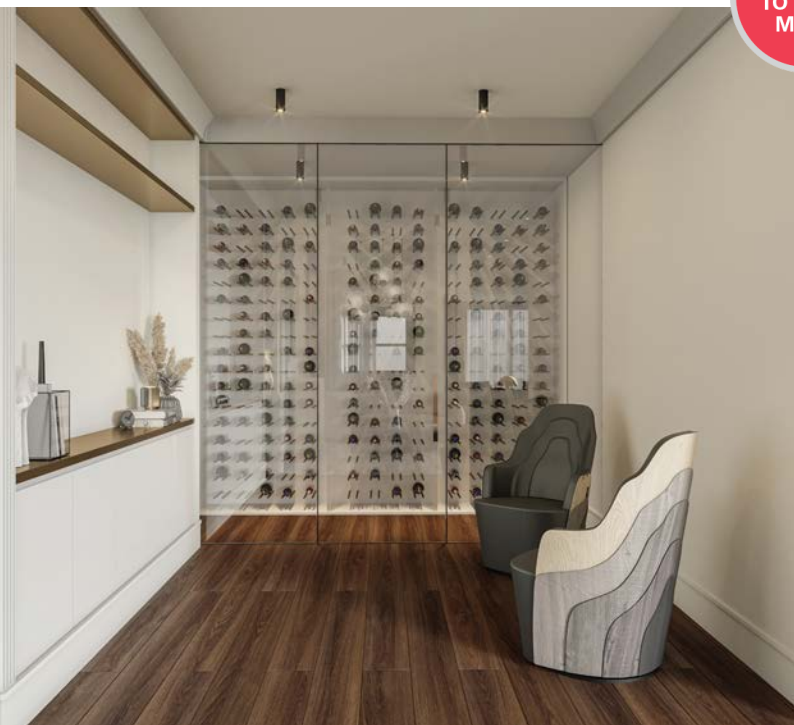
– Rohit Bhoite, Principal Architect, Rohit Bhoite House of Design



This house is one of many luxurious finished properties offered by developer Merkaba Homes on Leonard Avenue, one of the most prime residential streets in Lawrence Park, Toronto.



CLICK HERE
TO READ
MORE



The home is an entertainer's dream, fitted with everything from a cosy theatre to a wine room. It also has a soft, warm vibe, which makes it perfect for families as well, enveloping all familial needs under one roof.

RENEWED LIVING

Shuonya Nava Designs promotes serene living in the Silicon Valley of India with pared-back aesthetics and voluminous design

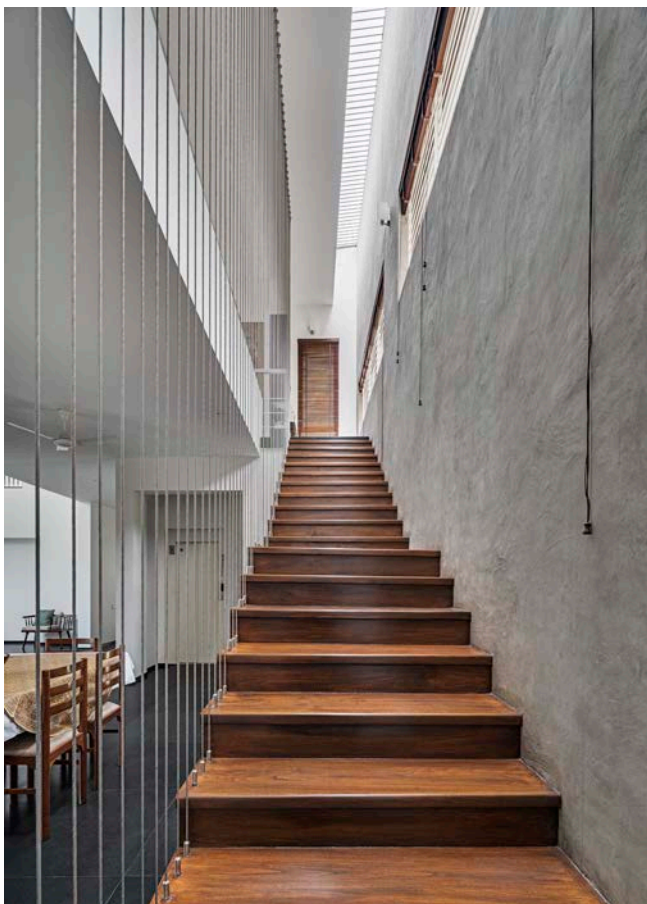
Text NTIJA IMMANUEL Images SHAMANTH PATIL J





"The residence was conceptualised as an amalgamation of the serenity of the site and the client's requirement of a simple and a low maintenance house."

– Chetan G B, *Principal Architect, Shuonya Nava Designs*



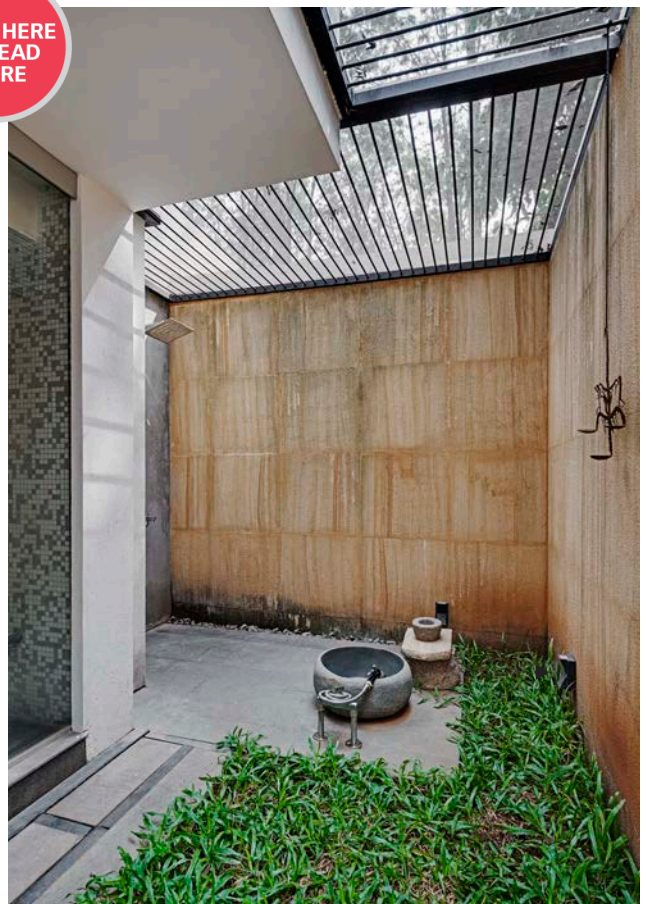
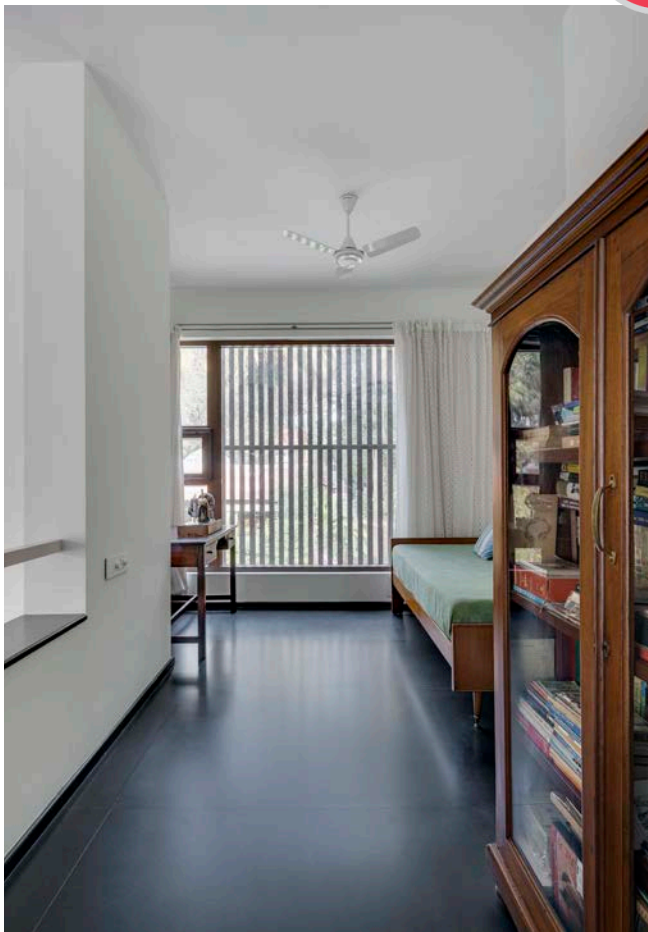
SCULPTED SPACES | *Residential*



CLICK HERE
TO READ
MORE



The walls around the outdoor shower area are clad with yellow sandstone, which is one of the few colourful gems in the house, where the palette is mostly muted.





NATURE'S BOUNTY

House 1559 by Studio Ardete is a family residence in Chandigarh with an unforgettable view

Text NITIJA IMMANUEL Images PURNESH DEV NIKHANJ



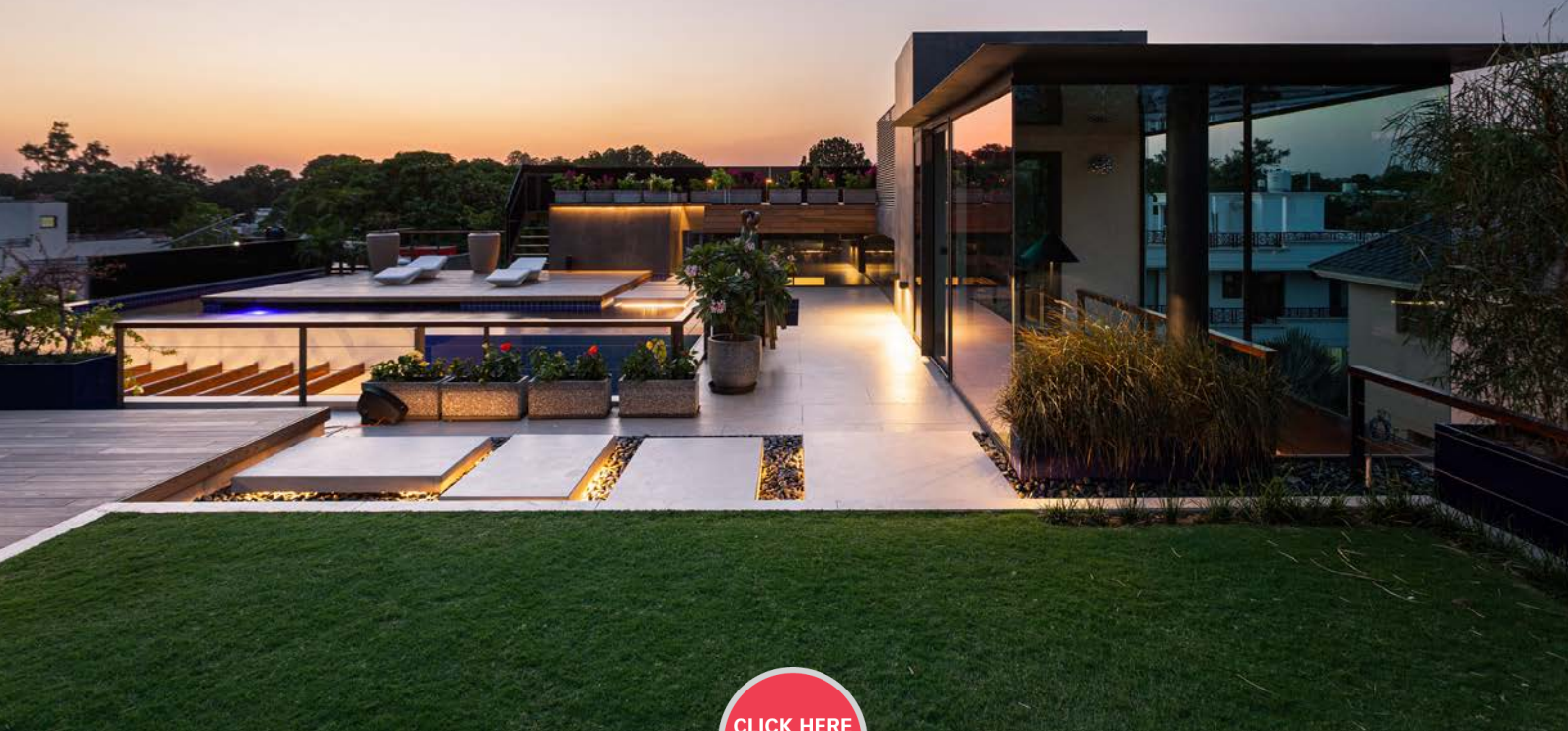


"Our primary design response was to encourage the occupant of the space to be in a constant dialogue with either nature or art, and sometimes both."

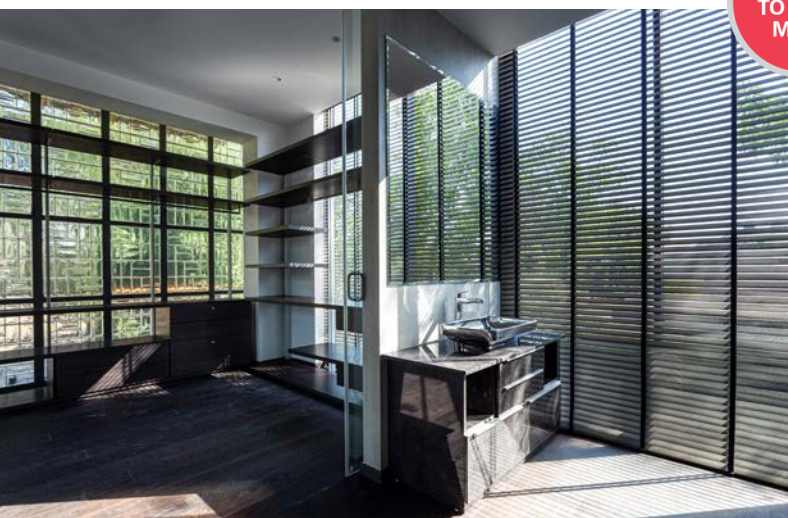
– Badrinath Kaleru, *Founder, Studio Ardete*

SCULPTED SPACES | *Residential*

Elements such as a carved courtyard, glass bricks, louvres, pergolas, and other openings inspire dialogue between the observer and the observed via play of light, shade, ventilation and the colours of nature.



CLICK HERE
TO READ
MORE



"The way the design responds to nature is sometimes almost too literal, like the stone-laying around the existing mango trees. At other times, it is in the form of art left to the imagination."

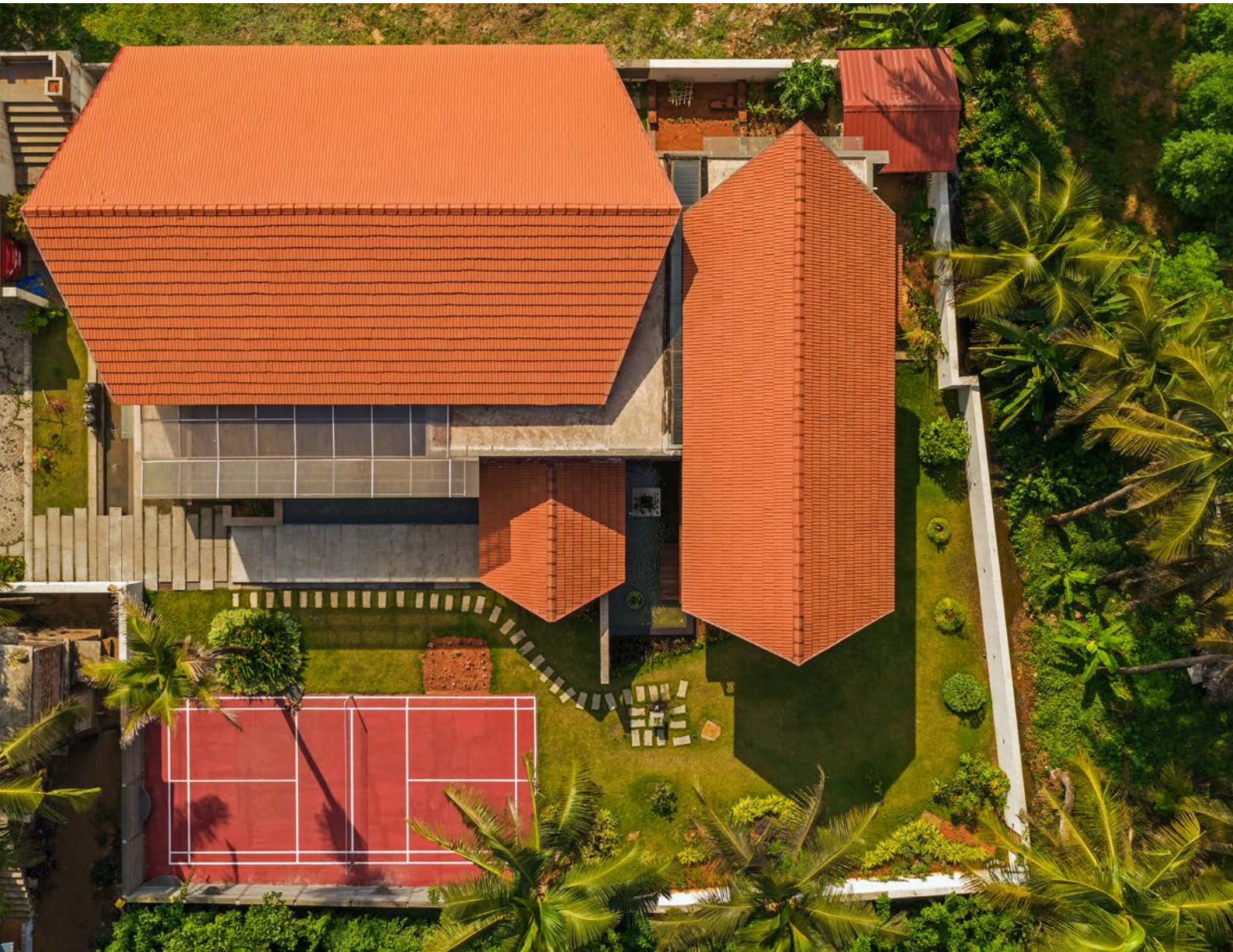
– Perna Kaleru, Co-founder, Studio Ardete

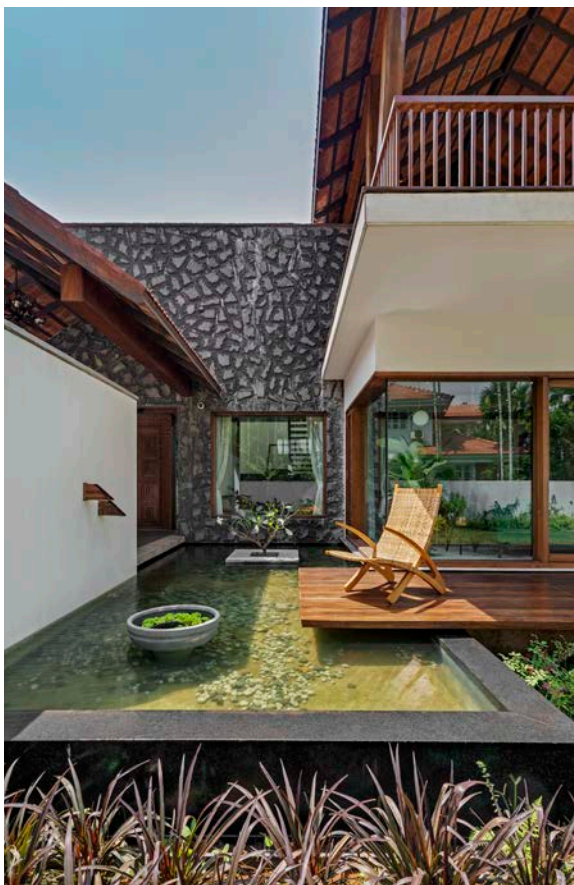


A PIECE OF BALI, IN MANGALORE

RGP Architects revisits the traditional Mangloorean
Guthu Mane structure to create a tropical haven

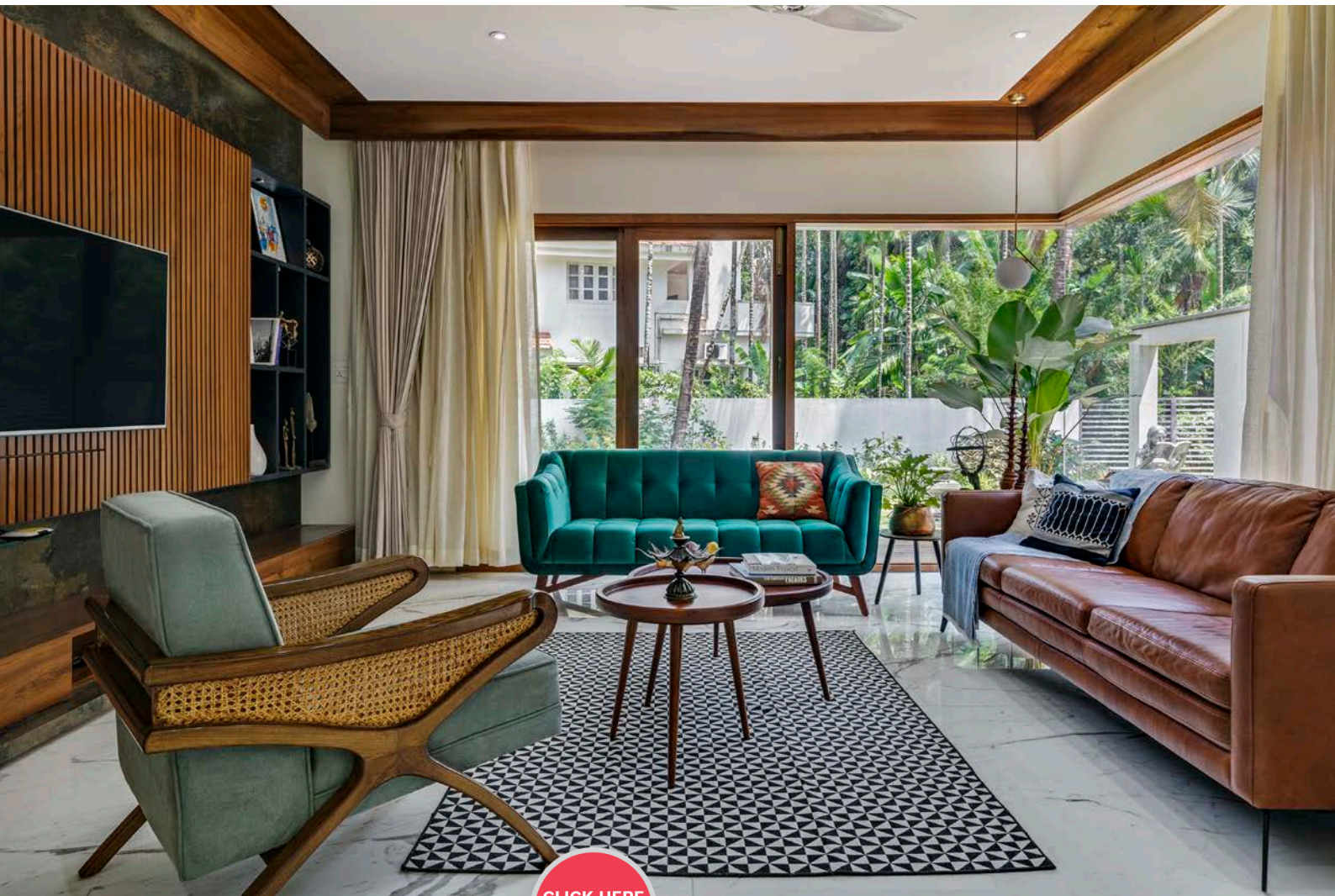
Text AVRIL NOEL D'SOUZA Images SHAMANTH PATIL J





“This 5,600sqft tropical home is set in a lush coconut plantation. It is reminiscent of a traditional Guthu Mane, although with a modern twist. I’ve attempted to modernise the context of this structure.

– Rachana Maroli, Founder, RGP Architects



CLICK HERE
TO READ
MORE



The central foyer connects the living room, dining room and the staircase. The foyer and dining spaces form a pavilion-like area of double height, which is spanned by a large, pitched roof, and which open out to the landscape.

DESIGNED TO SOOTHE

*The shades of beige and oatmeal that bathe this Ahmedabad bungalow by **Designer's Circle** give it a characteristic calm and cool appeal*

Text TINA THAKRAR *Images* MAULIK PATEL



"This home is both neutral and lavish; a contemporary design style brought about by blending simplicity, subtle sophistication, strong use of textures and clean lines."

– Rajesh Sheth, Founder, *Designer's Circle*

SCULPTED SPACES | *Residential*



Located in an upscale residential community in Ahmedabad, this contemporary bungalow celebrates all things neutral. From its understated colour scheme to its minimal furniture, the home revels in its simplicity.



"We have paid special attention to lighting throughout the house. It's not just part of the decor; it's the protagonist in our design, giving each room its singular character."

– Rajesh Sheth, Founder, Designer's Circle



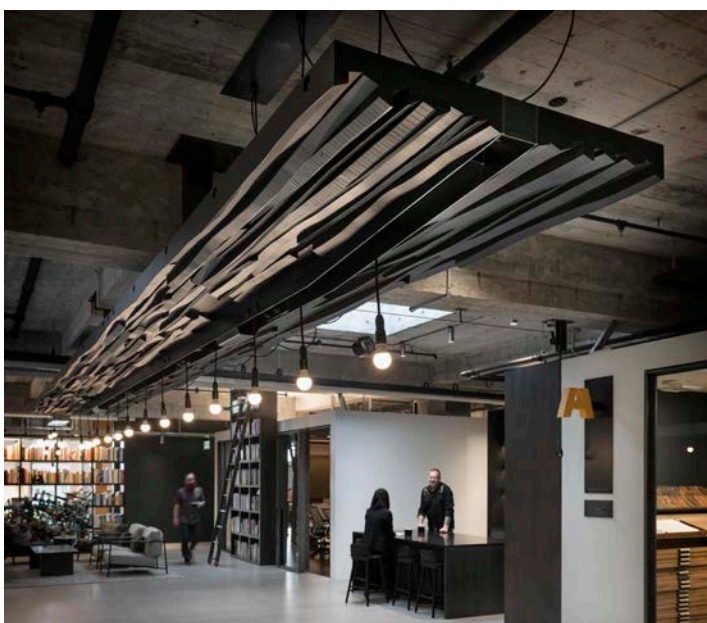
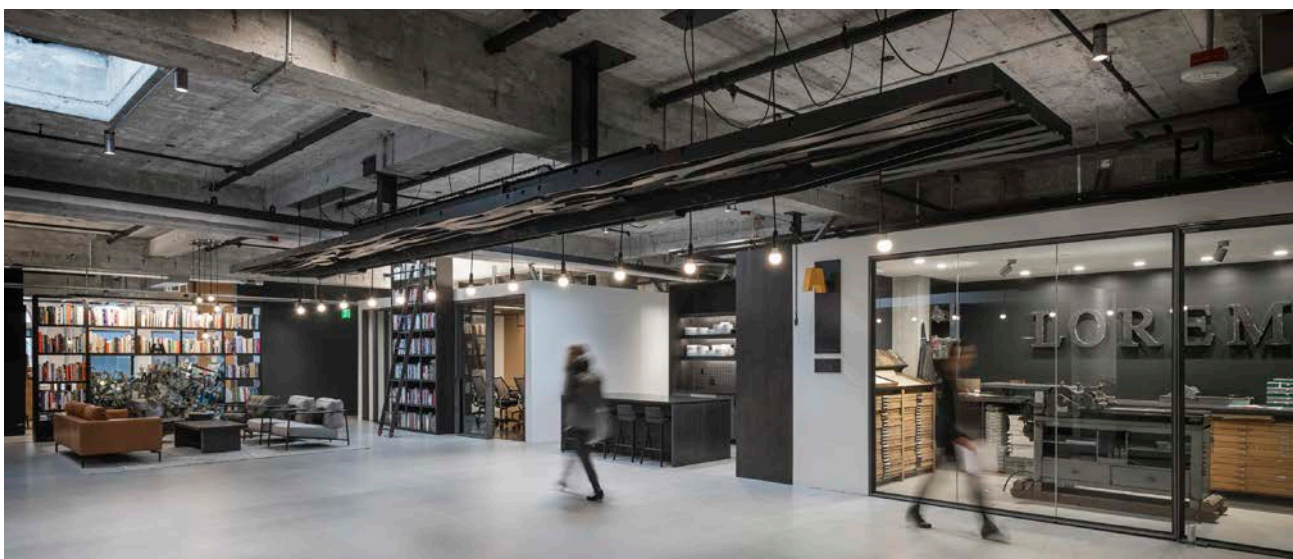
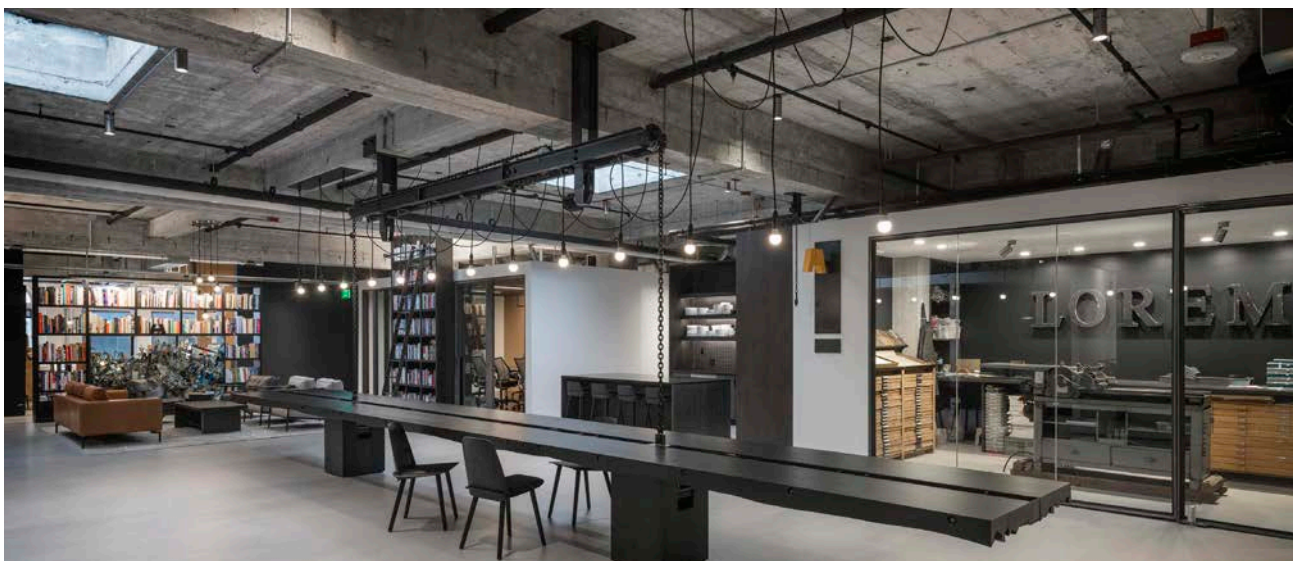
CLICK HERE
TO READ
MORE

FOR FREE THINKERS

*The design of the new Sid Lee (formerly Hornall Anderson) office by Seattle-based **Olson Kundig** is apt for the branding firm's collective working style*

Text TINA THAKRAR *Images* AARON LEITZ

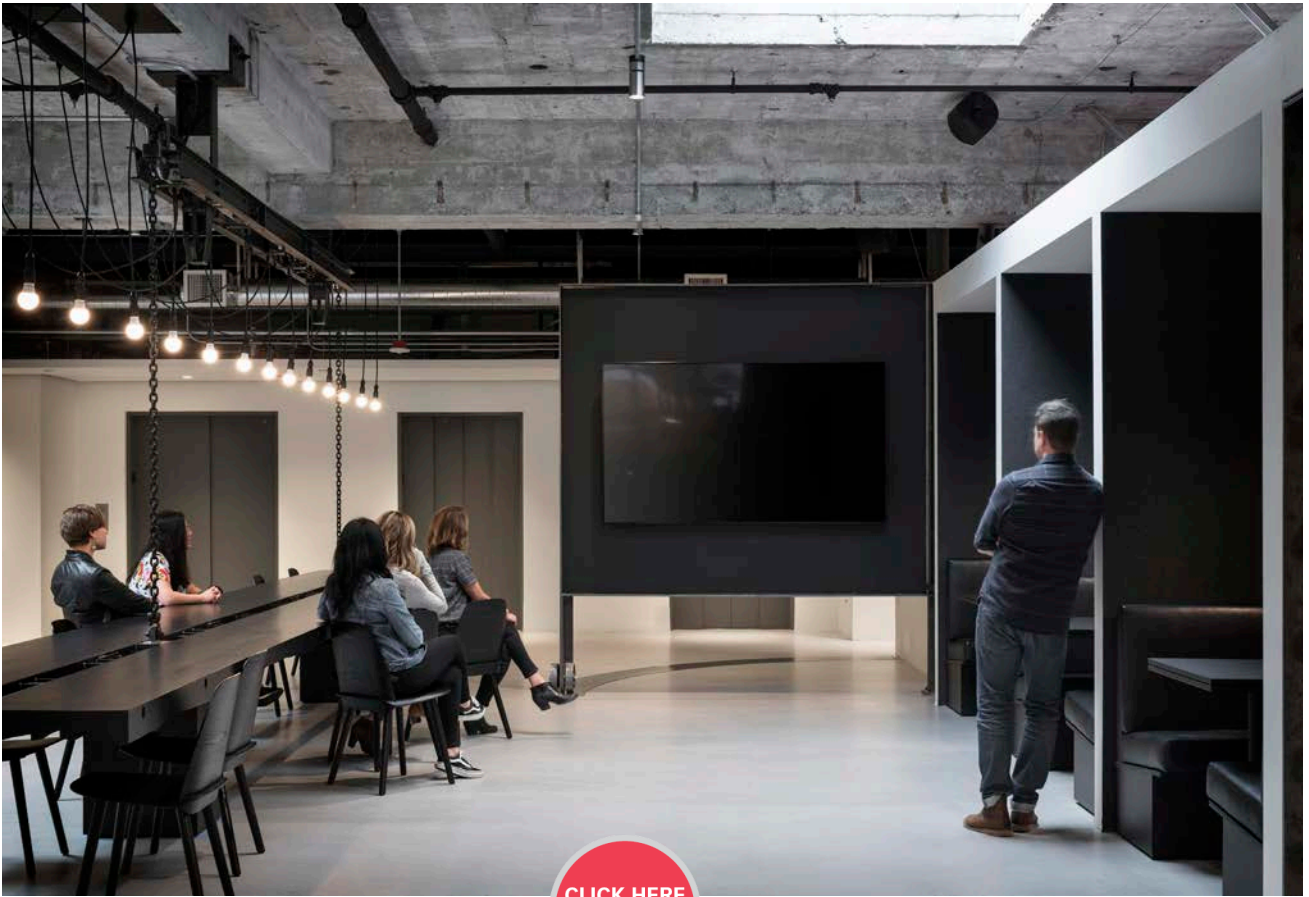




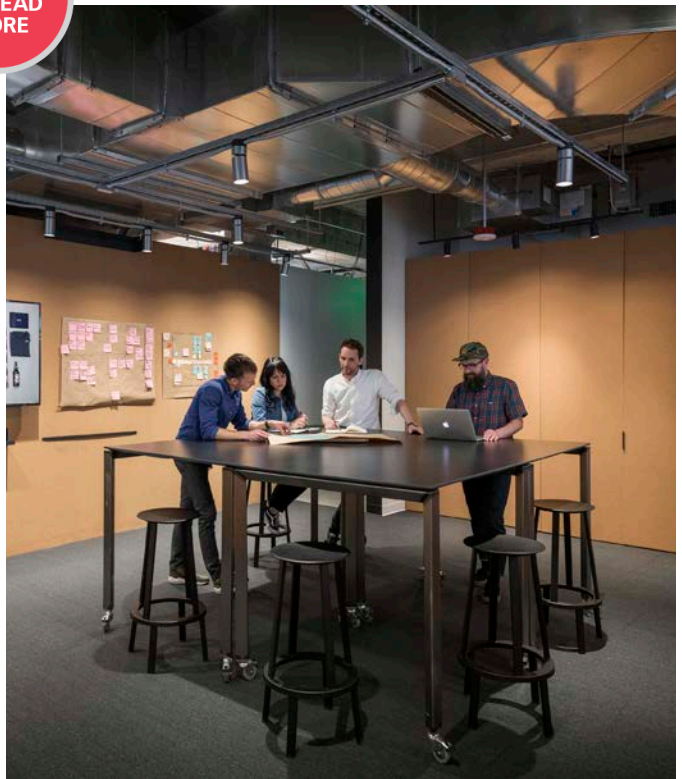
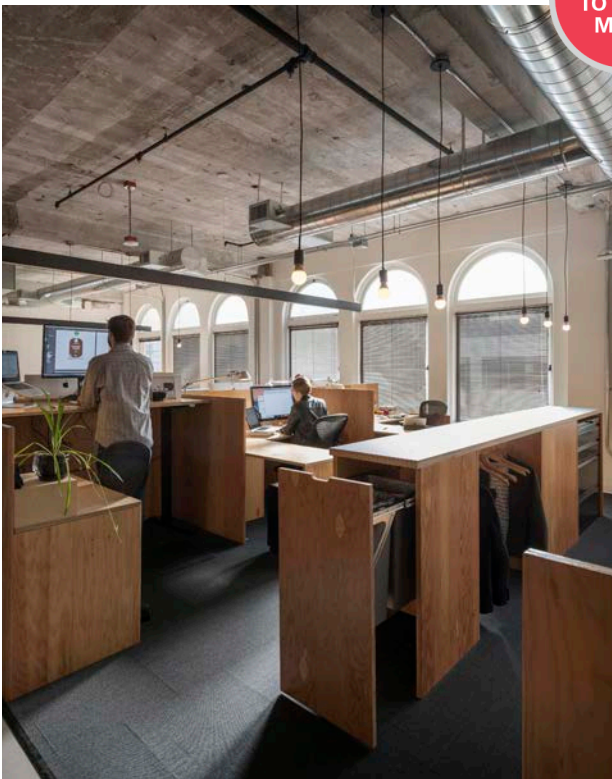
The design for this branding firm embraces a raw grittiness suitable to its creative work and culture. Dissolving traditional workplace spatial boundaries, the 14,000 sqft space is centered around an understated reception area anchored by a long community table.

“For this office, we wanted to create a raw space with an element of thoughtful grittiness. This unfinished yet refined space can support the type of open-ended creative work happening within.”

– Tom Kundig, FAIA, RIBA, Design Principal, Olson Kundig



CLICK HERE
TO READ
MORE



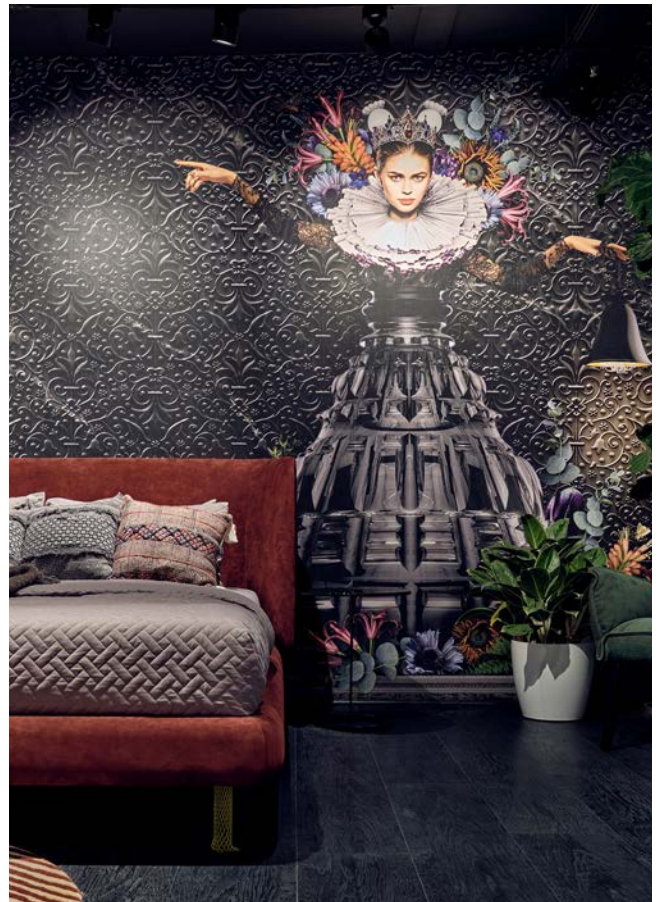
Situated in a 1920s building in Seattle's downtown core, the workplace integrates the past and present by deftly merging new architectural elements with the original building structure.

A BOLD EXPERIMENT

*The spatial treatment of this furniture store by **FADD Studio** elegantly introduces one setting after another to discerning homeowners*

Text TINA THAKRAR *Images* GOKUL RAO KADAM





Classic and quaint, yet dramatic and mysterious, the Ventura showroom is an aspirational space for buyers to try out new ideas and take measured risks with their own homes. Across 14 specially curated zones, Farah Ahmed Mathias and Dhaval Shellugar create a bold, tailored experience.

ligne roset®

cattelan
italia

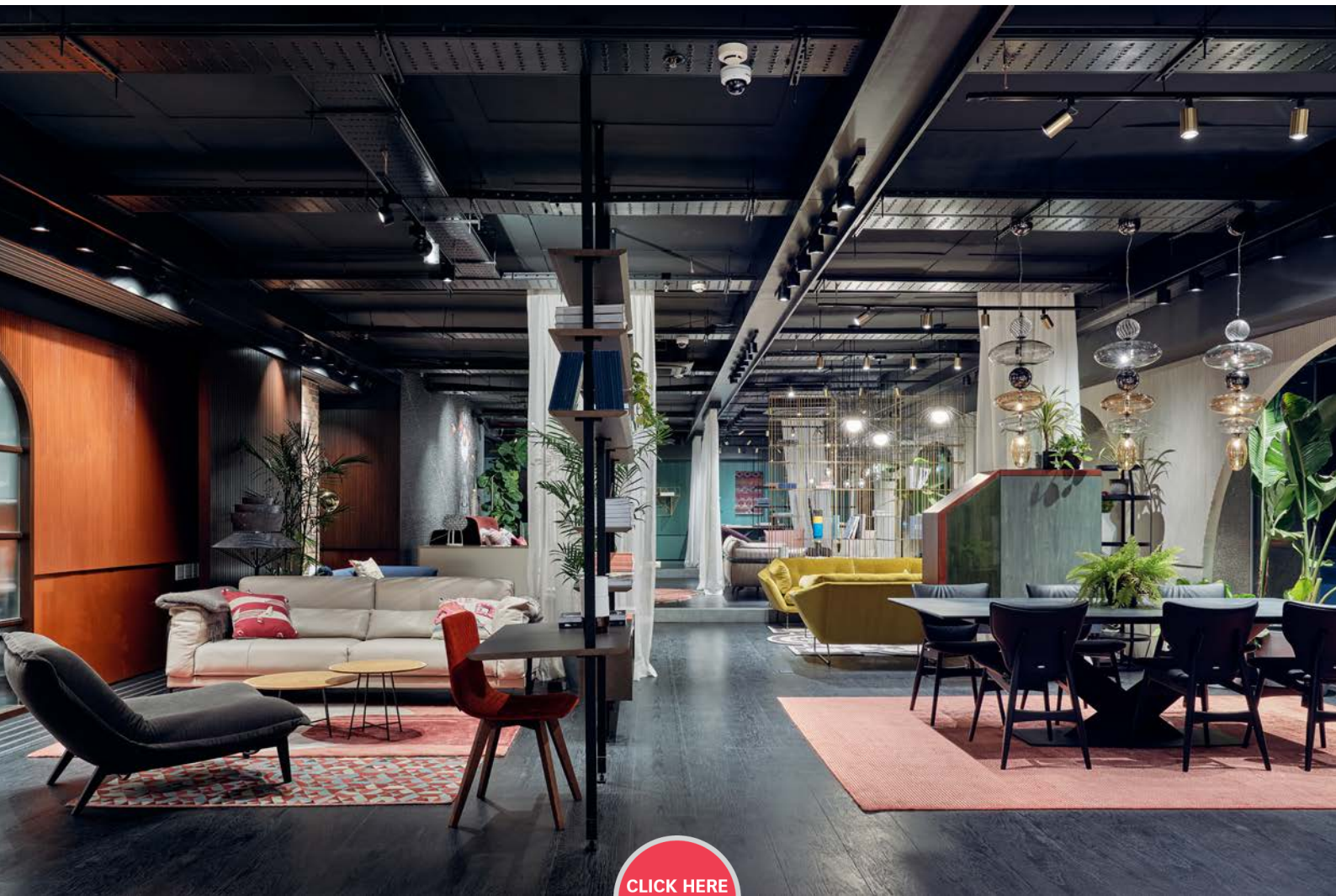
VENTURA

GAMMA

prostoria

"We believe that members of the design industry can change the way people perceive things. So as interior designers, we also wanted to show people new ways of doing up their homes."

– Dhaval Shellugar, Co-founder, FADD Studio



CLICK HERE
TO READ
MORE

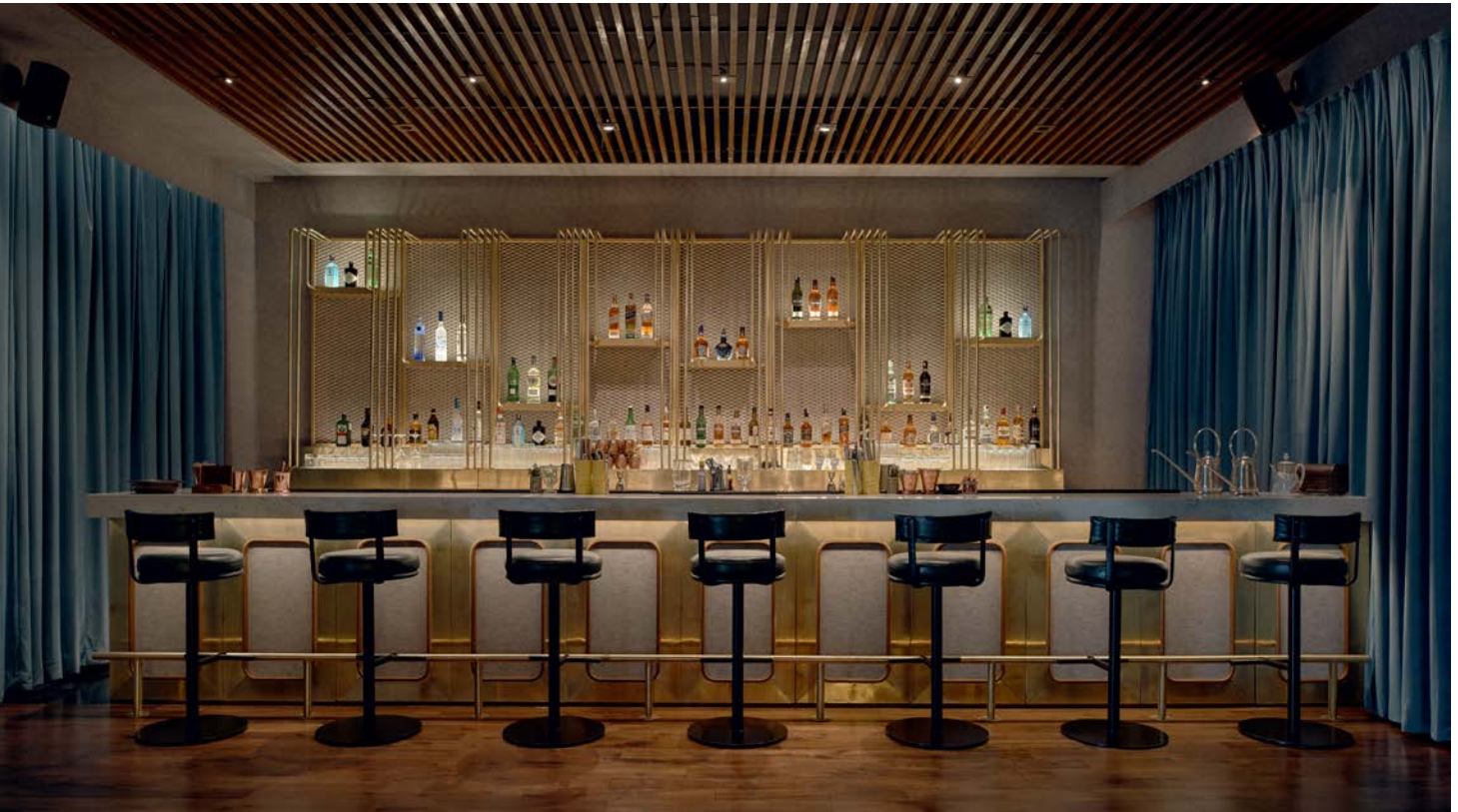
The design of the showroom aims to initiate conversations around luxury, and how with clever design concepts, even the most risqué ideas can be brought to fruition.



DINING DRAMA

*Rika by **Maia Design Studio** in Park Hyatt Hyderabad
plays on the unique concept of adding theatre to the
simple act of dining*

Text TINA THAKRAR *Images* GOKUL RAO KADAM



"We have created an ambience that is energetic. The restaurant is designed to be a buzzing hotspot over the weekend, but also a trendy diner on the weekdays."

– Shruti Jaipuria, Founder, *Maia Design Studio*



CLICK HERE
TO READ
MORE



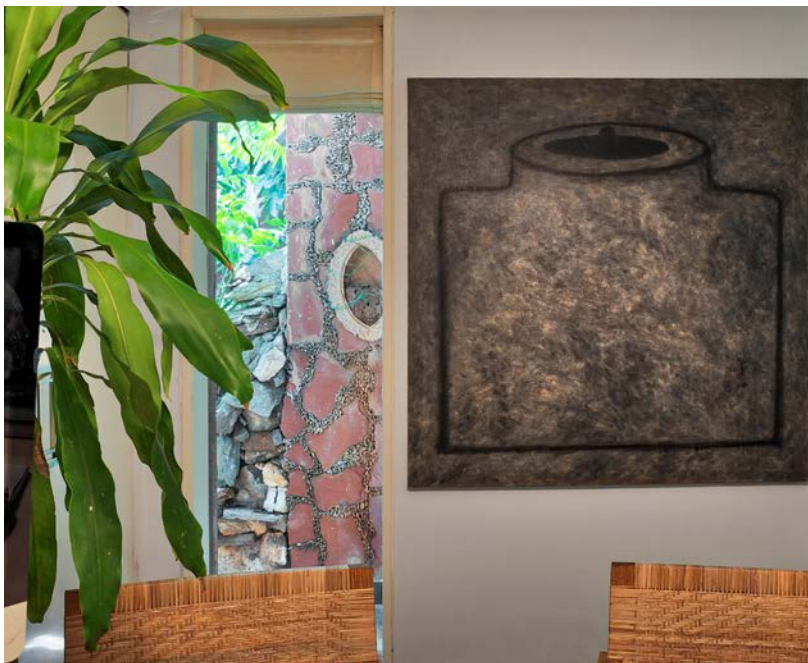
The site was long and linear, prompting the design team to divide it into multiple sections. The overall aesthetic, however, remains trendy, global, chic and approachable.

PLACE OF PRIDE

*Finding his opportune moment during the lockdown phase, **Jason Wadhvani** re-designed his work cabin with the inclusion of some personal favourites*

Text TINA THAKRAR *Images* PULKIT SEHGAL





"I wanted the space to feel warm, zen-like and conducive to creativity. The area of the cabin is barely 150 sqft so I had to make the most effective use of space without it feeling cluttered."

– Jason Wadhvani, Founder, Jason Wadhvani Design





CLICK HERE
TO READ
MORE



Apart from retaining the concealed library and his old work desk, Wadhvani went about completely changing the cabin design. His favourite new piece is the Ingo Maurer Zettel light, which now hangs above his table.

HOME EXPERIENCE

Mira Design Studio designs an inviting office for a builder by creating an interesting interplay of colours, patterns and forms

Text **TINA THAKRAR** Images **NAYAN SONI**



“Colours and patterns have an indispensable role in this office, to stimulate conversations as well as impart a cheerful vibe among inhabitants and visitors.”

– Shruthy Sanghvi, Creative Head and Founder, Mira Design Studio



"The most eye-catching element in the office is the flooring; a collision of candy-striped patterns in vibrant primary colours. The viewer's gaze follows the lines to every corner."

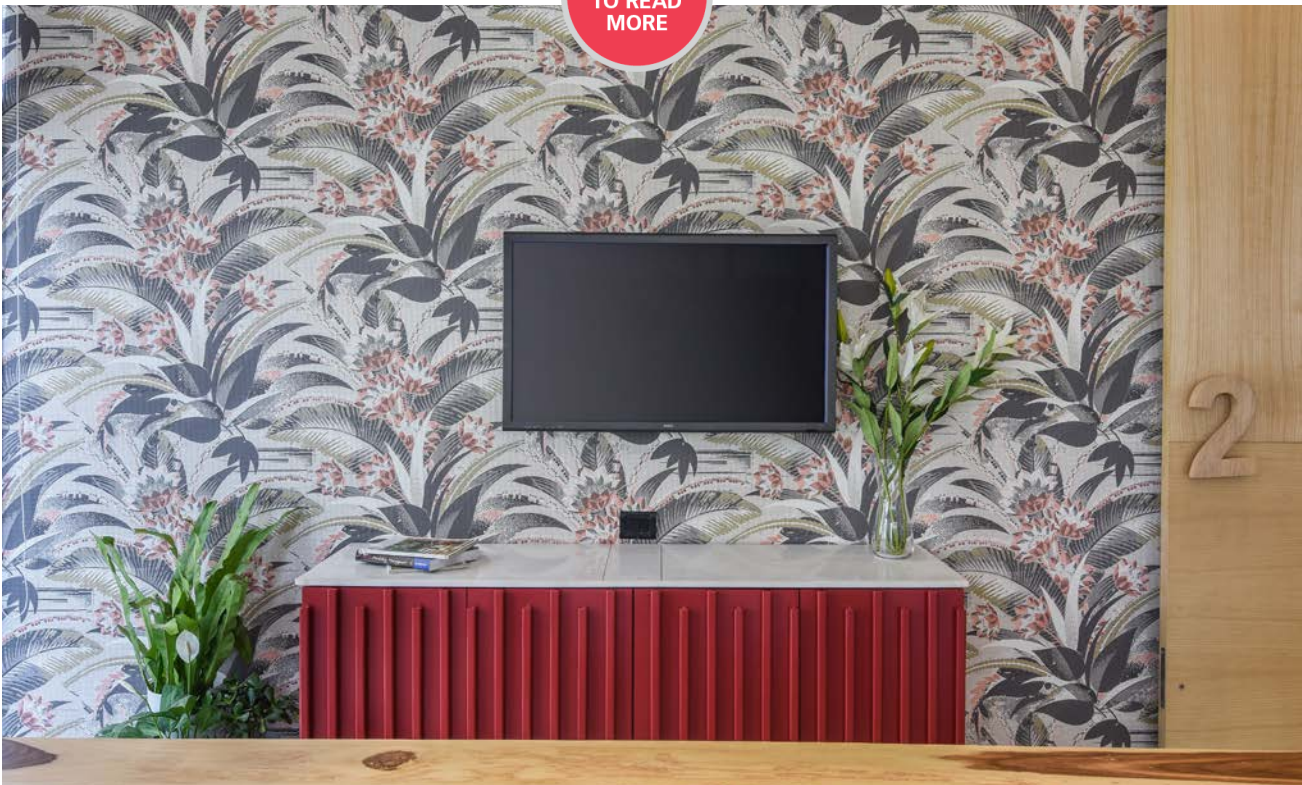
– Shruthy Sanghvi, Creative Head and Founder, Mira Design Studio



Christened the Line Office, this is a marketing and sales office for a builder who wanted a space that was warm and inviting for potential home buyers.



CLICK HERE
TO READ
MORE



Besides the flooring, another prominent highlight is an MS wireframe experience centre at the entrance of the office, displaying the range of materials and fixtures used in the actual apartment units.

HOME & DESIGN

TRENDS