

GoodHomes

INDIA

A Times of India Publication
VOLUME 13 ISSUE 06 SEPTEMBER 2020

DESIGN CHANGES EVERYTHING

@goodhomesmagazine
@goodhomesmagazineindia
@goodhomesindia

COLOUR PALETTE

Meet the
marigold
in a post
modern
avatar

HOUSE FASHION

*Terrazzo
makes a
stunning
comeback*

GET READY FOR THE FESTIVITIES

WITH TABLE
ESSENTIALS THAT
WILL MAKE
A STATEMENT

LIVING THEIR BEST LIVES

GET A GLIMPSE OF SOME
OF THE MOST GOOD LOOKING
HOMES WE HAVE SEEN

INDIE
CERAMIC
LABELS
WE LOVE

NOW YOU CAN
DIRECTLY ACCESS
THE FEATURE BY
CLICKING BY
ON THE
COVERLINE

CONTENTS

September 2020



How easily we transitioned into the New Normal. But the question that bothers me is will we ever go back to what is actually normal? I think we all know the answer. And just like we accepted the new normal, we've silently accepted the fact that the world as we knew it has changed forever.

There's caution in the air, but we are also a lot more conscious – about everything we do. And maybe, that's one positive that's come out of this entire experience. For now, this is our reality.

Life happens, no matter what!

The festivities might be a bit toned down this year, it might lack the glint and glimmer of the previous year. But festivities there will be. We are gearing up for house parties albeit just with our families. This issue, Avril has put together a stunning set of ideas for adding that festive glam to family dinners. Read about some amazing homegrown ceramic brands. And we have our usual line up of gorgeous homes.

Happy Reading!

Seema Sreedharan
Editor



18

06 SHOPPING

- 06 MOOD BOARD
- 08 HOT RIGHT NOW
- 09 CUTTING EDGE
- 11 WISHLIST

10 PEOPLE

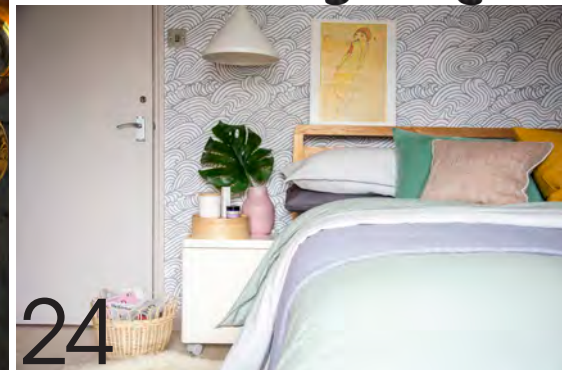
- 10 AASHNA ARORA

16 SPECIAL FEATURE

- 16 MASTERS OF CERAMIC
- 18 TRENDING TABLES



16



24

24 HOMES

- 24 QUARANTINE PROJECT:
DIY RENOVATION
- 28 ALL THINGS DELICATE
- 31 INSPIRED INDIAN
- 34 MODERN HERITAGE
- 37 THE BEST OF BOTH!
- 40 IN A ZEN GARDEN
- 42 BLOSSOMING LIKE THE
LOTUS FLOWER



THE COVER

PROJECT FRANK NEWBOLD
FEATURE SEEMA SREEDHARAN
PHOTOGRAPHS NICK FORD

DOWNLOAD YOUR FAVOURITE MAGAZINES FOR FREE!

Stay Indoors. Stay Safe.



worldwidemedia.in

NEXT ISSUE

Catch you up with everything festive. From picture-perfect table settings, inspiring mood boards, amazing indie craftspeople & gloriously-stunning homes...next issue is dedicated to the art of celebrating!



Calling all style interns – especially those based in New Delhi and Mumbai. Quick! Send us your resume if you'd like the opportunity to work with us.

Email:
goodhomes@wmm.co.in

GoodHomes

CEO

DEEPAK LAMBA

EDITOR IN CHIEF

RONITAA ITALIA

Editor Seema Sreedharan

Associate Editor Avril Noel D'souza

Senior Features Editor Tina Thakrar

Senior Digital Writer Nitija Immanuel

Senior Editorial Coordinator Harshal Wesavkar

Deputy Art Director Shalaka Shinde

Senior Graphic Designer Anushree Kumar

Stylist Kamakshee Tewari

Chief Financial Officer Subramaniam S.

Head Human Resources Meghna Puthawala

Publisher Joji Varghese

Experiential Marketing Aakash Mishra

Content Studio Vidyut Patra

Head Marketing Priyadarshi Banerjee

Head Digital Solutions

Chief Marketing Manager Ravi Budania

BUSINESS DIRECTOR

SUNIL WUTHOO

BRAND SOLUTIONS

WEST

MUMBAI

Vice President

- Brand Solutions &

Business Head

- Femina Salon & Spa

Gautam Chopra

gautam.chopra@wmm.co.in

PUNE

Ekta Dang

ekta.dang@wmm.co.in

AHMEDABAD

Kamal Rajput

kamal.rajput@wmm.co.in

NORTH

Vice President & Sales Head

- Long Format Content

Anjali Rathor

anjali.rathor@wmm.co.in

NOIDA/NEW DELHI

Atif Shakeb

atif.shakeb@wmm.co.in

JAIPUR

Pushpesh Sood

pushpesh.lood@wmm.co.in

EAST

Assistant Vice President

Alka Kakar

alka.kakar@wmm.co.in

Bijoy Choudhary

bijoy.choudhary@wmm.co.in

SOUTH

Vice President - South

& Business Head

- Femina Tamil

Pravin Menon

pravin.menon@wmm.co.in

CHENNAI

Karthik D

karthik.d@wmm.co.in

SUBSCRIPTIONS

Asha Kulkarni, Manager Marketing

asha.kulkarni@wmm.co.in

Associate General Manager (RMD)

Suparna Sheth, suparna.sheth@timesgroup.com

Editorial Enquiries goodhomes@wmm.co.in

FOR SUBSCRIPTIONS

Online: mags.timesgroup.com

SMS: GHSUB 58888

Mail: subscriptions.wmm@wmm.co.in

Call: 18001210005

(All India toll free number)

GoodHomes takes no responsibility for unsolicited photographs or material. All photographs, unless otherwise indicated, are used for illustrative purposes only

For marketing queries, e-mail goodhomes@wmm.co.in. For editorial queries, e-mail goodhomes@wmm.co.in

Printed and published by Joji Varghese on behalf of owners Worldwide Media Pvt Ltd, The Times of India Building, Dr DN Road, Fort, Mumbai 400001, and printed at Rajhans Enterprises, No 134, 4th Main Road, Industrial Town, Rajajinagar, Bengaluru 560044, and published at Worldwide Media Pvt Ltd, The Times of India Building, Dr DN Road, Fort, Mumbai 400001 Processed at Colour Processing, The Times of India Suburban Press, Kandivali, Mumbai 400101

All rights reserved worldwide. Reproducing in any manner without prior written permission prohibited

CIN: U22120MH2003142239



PHOTOGRAPH ABHEER DHANU

WRITE TO ME goodhomes@wwm.co.in
SUBSCRIBE mags.timesgroup.com/good-homes.html

FOLLOW US ON:

INSTAGRAM @goodhomesmagazine
FACEBOOK @goodhomesmagazineindia
TWITTER @goodhomesindia
LOG ON NOW www.goodhomes.co.in

It has been almost six months now that the whole world has shifted based home. Home has always been where the heart was and will be. Now it's also where the work and the friends are. As the whole country is slowly crawling back to life, and we see some degree of normalcy returning to the face of our neighbourhood, I can't help dwelling on the choices we're making, and will be making – for ourselves, our children, our families and society at large.

Mindful is our middle name...conscious is an extension of who we are becoming. At least that's something I'm choosing to believe, because I refuse to accept that these last few months have been spent in lockdown the world over, in vain. This slow unravelling of our spontaneity, making every act of reaching out a deliberate one, is not something that I'm excited about. But it's definitely something that I've come to appreciate. It makes me value human contact even more now than I ever did before. It makes me appreciate "home" more than ever before, because that's where I can still reach out and touch whatever I want, whenever I want.

I still remember my mother berating me for "not paying attention" to things while I was growing up. You see, I've always had this habit of doing too many things at a time – yes, multitasking when it wasn't really required (rolling my eyes) was not such a hit with my mother. Since the time that I've been home with the kids and my parents during the lockdown, I have only been paying attention. To everything – the big things, the little things, the not so big as well as the not so small things – and I can't tell you how content I feel in my awareness.

On that note, I welcome you to September, the cusp of our festive season. As you get ready for the celebrations ahead, I implore you to pay attention too, not just to what you're touching and where you're going, but also to the things that make your house a home.

A handwritten signature in black ink, reading "Ronitaa Italia". The signature is stylized with a large, flowing 'R' and a long horizontal line at the end.

RONITAA ITALIA
Editor in Chief

September

ORANGE

FENDI CASA AVAILABLE
AT SEETU KOHLI HOME



BAEL BOTANICALS



ANEMOS

BARO BARO MARKET

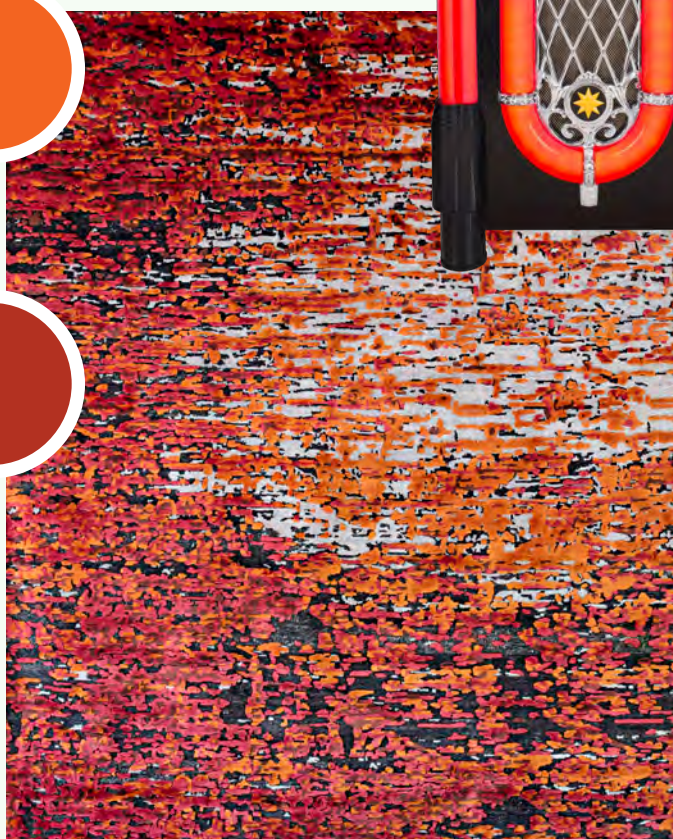


Click here
TO READ MORE



The beautiful gradients of marigold range from delicate yellow to robust orange. Such a wonderful flower our humble marigold bloom is, and easily available too! As the festive timbre grows stronger, the celebratory tonality of our favourite flower remains our companion and inspires the moodboard of the month.

FEATURE **AVRIL NOEL D'SOUZA**



HANDS CARPET

Shopping Guide on Pg 44

CASAMIA
PRESENTS

Dcode

A Times Group Initiative

BE PART
OF INDIA'S
FIRST
CURATED
VIRTUAL
ART &
DESIGN
FESTIVAL

DESIGN
BIENNALE

MARK YOUR CALENDARS
SEPT 30 - OCT 06, 2020

JAIPUR
EDITION

CURATED BY
SHANTANU GARG

COLOUR PARTNER

ICA **Pidilite**

Premium Italian Wood Finishes

PARTNERS

A-CLASS
MARBLE

ORVI
INNOVATIVE
SURFACES

ATTITUDES
— COLOUR DESIGN AND TEXT —

JAIPUR RUGS

LUTRON

LIGHTING PARTNER
EMERY STUDIO

REGISTER FOR FREE, LOG ON TO
www.goodhomes.co.in/dcode



GUESS WHO'S BACK?

Terrazzo! Celebrating the coming together of broken colour chips that make magic

FEATURE **AVRIL NOEL D'SOUZA**



1 Mono Table lamp*, Harshita Jhamtani Designs. 2 Cushions*, AA Living. 3 Lamp*, Jade Design House. 4 Wall or floor tile*, Classic Marble Company. 5 Bathroom sink*, Shri ram marble tiles company. 6 Plates*, AA Living. 7 Blush light (side view); 8 Mono light (front view)*; both by Harshita Jhamtani Designs. *Prices on Request Shopping Guide on Pg 44

SUCK IT IN!

When the housemaids went MIA, vacuum cleaners became our knights in shining armour
FEATURE **SEEMA SREEDHARAN**

The Dyson V11 Absolute Pro comes with a set of nine attachments that can be used for cleaning everything from the hard-to-get nooks and crannies of your house, to your carpets and mattresses, and even the distant corner of your dear sofa where your cat likes to sit.



DIYSON

"There is no getting away from it: You have to clean."

— Anthea Turner, Television Host

PHILIPS



USP: With the Philips Bagless Vacuum PowerPro Compact, compact design meets king-size performance. Enjoy thorough cleaning throughout your home thanks to PowerCyclone 5 technology and MultiClean nozzle.

EUREKA FORBES



USP: Introducing the Euroclean Dynamite. The powerful cleaner not only removes dirt and dust, but also traps harmful micro-organisms and dust mites. The Dynamic Suction feature ensures intelligent air flow dynamics, and superior suction.

PRESTIGE



USP: The Prestige Typhoon handheld wet and dry vacuum cleaner makes cleaning hassle-free like never before. With multiple features, it helps you clean the floor, be it wet or dry and the blower function lets you clean hard-to-reach corners with amazing ease.

Shopping Guide on Pg 44




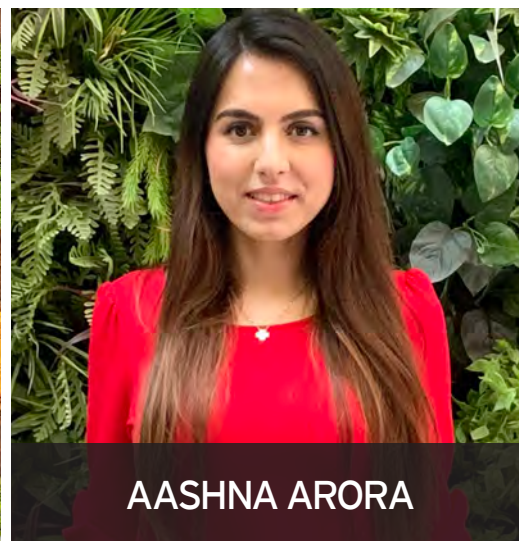
Click here
TO READ MORE

ART WITH FOOD

*...Atleast that's how we see
the stunning and intricate
range of tableware and
cutlery created by Aashna
Arora of XAKA*

FEATURE **AVRIL NOEL D'SOUZA**

For Aashna Arora, a life without design would be like a spoon without a fork. And when you think about the legacy she is in the process of creating with XAKA Retail, her thoughts become all too pertinent. "Every time I would pick up a pencil to sketch, I would always find myself starting with sketching a spoon. That's when I knew I had a connection with cutlery. And that's how XAKA came into play." XAKA brings to the table (no pun intended) a cutlery and tableware that elevates the dining experience into an elaborate affair. Aashna takes great pride in bringing a fine dining flavour to our daily meals. Says the Creative Director, "The brand is a concoction of luxury, design and functionality. I aspire to create lasting designs that inspire individual expression and use. It is a fresh take on luxury handcrafted cutlery and tableware." The idea of making every meal a gourmet-like experience sits well with us. We salute the designer for making it a party every day, by bringing our way bespoke designs that transcend the ordinary! 



AASHNA ARORA

I would love to work and collaborate with Christian Louboutin on something fun for XAKA! I absolutely love and adore his product and design sense!

— Aashna Arora, Creative Director, XAKA Retail

MAGIC OF BLACK

If you are in the mood for a complete transformation...look no further than the classic tonality of black! The darkest shade on the colour spectrum can easily morph from seductively-glamorous, to rooted and rustic. We love how its many shades can be interpreted as per the mood you are in.

FEATURE **AVRIL NOEL D'SOUZA**



THE KINGFISHER CABINET, NIVASSA HOME

Shopping Guide on Pg 44

In Conversation with SHANTANU GARG

Young and dynamic, architectural designer Shantanu Garg is synonymous with the India-modern design aesthetic

Shantanu Garg is the undisputed champion of modern Indian design. Through his eponymous design practice, Shantanu Garg Design, he advocates transforming design into idiosyncratic concepts, turning them into compositions derived largely from customisation. He is on a quest to create spaces that are an amalgamation of international design aesthetics and functionality, whilst catering to native sensibilities and demands.

Shantanu took on his first project when he was barely 18. Since then, he's worked on numerous prestigious commercial and residential projects not just in India but internationally as well. His designs, whether seen in residential, commercial or retail spaces, or even the exhibitions or experiences that he curates, are based on a beautiful blend of contemporary minimalism and traditional extravagance.

It is this passion to carve a distinct identity for Indian design that led to his collaboration with the D/code Design Biennale (DDB). As curator of the virtual edition of D/code Design Biennale, (Phase I of Jaipur Design Biennale), he brings together over 50 illustrious names in the worlds of art, design and architecture.

"Through DDB, we aim to essay the fables of rich Indian heritage, culture and traditions and narrate its architectural history. From the influence of multiple dynasties that had ruled this country to a confluence of crossover boundaries and styles in modern Indian design narratives, we wish to project India through its crafts and artisanal approach," says the designer, whose own designs are evocative of the rich cultural heritage of India. "It's about time that Indian designers get their due. It's about time that we not only provide a platform for them to showcase their designs, but also catapult them to the International design arena."

Shantanu Garg, the undisputed champion of the India-modern aesthetic, comes on board as the curator for D/code Design Biennale, Jaipur Edition.



CASAMIA
PRESENTS

D/code
A Times Group Initiative
DESIGN BIENNALE
INDIA'S FIRST CURATED
VIRTUAL ART AND DESIGN FESTIVAL

**JAIPUR
EDITION**

CURATED BY
SHANTANU GARG

PARTNERS



JAIPUR RUGS



LIGHTING PARTNER
EMERY STUDIO

COLOUR
PARTNER



Premium Italian Wood Finishes



“

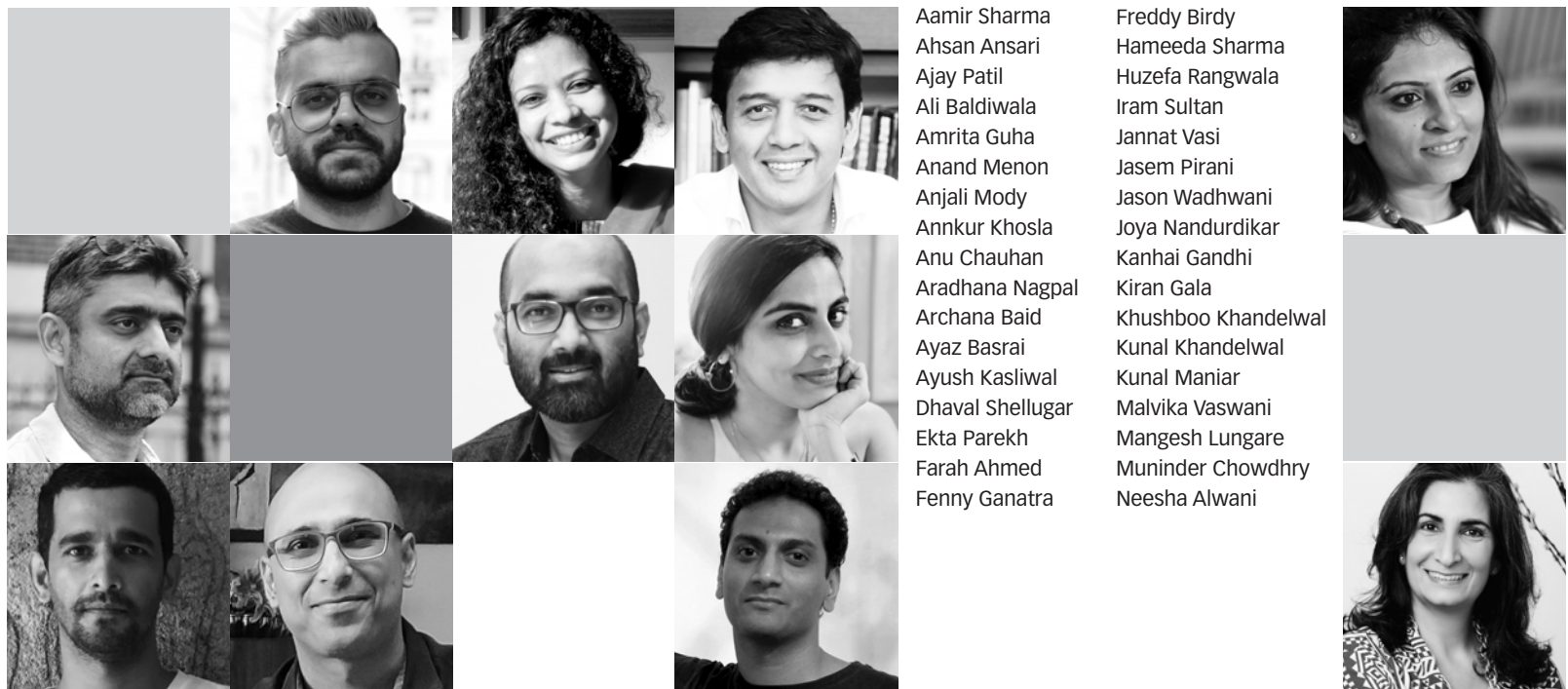
From the influence of multiple dynasties that had ruled this country to the confluence of crossover boundaries and styles in modern Indian design narratives, we wish to project India through its crafts and artisanal approach.

— Shantanu Garg, Interior Designer





MEET THE DESIGNERS IN COLLABORATION





Introducing the designers in collaboration for Casamia presents D/code Design Biennale, India's first curated virtual art and design festival, curated by Shantanu Garg. These pioneering architects and designers are setting the stage for ground-breaking design, with installations, products and spatial experiences like you've never seen before, in virtual reality.

Nishita Kamdar
Noor Dasmesh Singh
Pavitra Rajaram
Piyush Mehra
Prashant Chauhan
Priyanka Khanna
Priyanka Mehra
Rajiv Parekh
Ravi Vazirani
Rohit Bhoite
Rooshad Shroff
Rudraksh Charan
Rupesh Baid
Sahil Jain
Saniya Kantawala
Sanjyt Singh
Sarah Sham

Shantanu Garg
Shernavaz Bharucha
Shobhan Kothari
Shonali Mahajan
Shresht Kashyap
Siddhartha Das
Sonam Gosalia
Sumesh Menon
Supraja Rao
Vaishali Kamdar
Vivek Gupta
Vishakha Dholakia
Vishpala Hundekari
Vritima Wadhwa
Zaki Shaikh
Zubin Master



COLOUR
PARTNER



To register now, log on to
www.goodhomes.co.in/dcode

MASTERS OF ceramic

In the right hands, a clump of clay can be shaped, baked and glazed into a thing of beauty. Here are the hands doing amazing things with ceramic

FEATURE **AVRIL NOEL D'SOUZA**



NANDITA ARON

Founder, The White Hill

Inspired by the forest

Every ceramic tableware design that comes out of The White Hill is inspired by Nandita's time spent in forests. "All that we do is largely inspired from my time in Himachal and wildlife sanctuaries. The White Hill is a journal of sorts." This soft-spoken conservationist believes that food brings friends and families together, and so do the great outdoors.



I focus on stories from experiences and build narratives steeped in the present that allow us to take a step back.

— Nandita Aron, Founder, The White Hill



My mind is always conjuring up visuals that I try to convert into ceramic.

— Meenakshi Varma, Founder, Oriri Studio



MEENAKSHI VARMA

Founder, Oriri Studio

Colours and play

Meenakshi's brush with pottery started off as a stressbuster.

"Even though I loved it, I thought it was the end of my association with clay. But maybe I was fated to do what I am doing now, as I ended up with a space perfect to set up a pottery studio. I had no clue what I was up to but I knew I wanted to do it. I had a lot of support from my family."



TANUSHREE SINGH

Founder, Lacuna

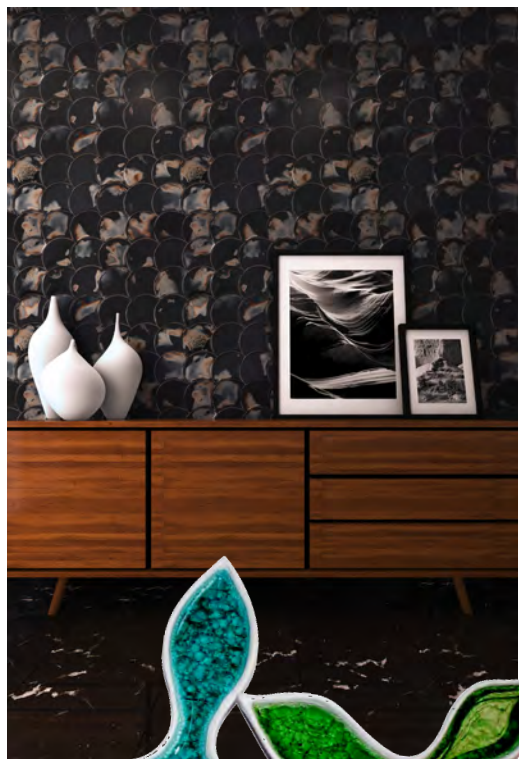
Crafted with soul

Founded in 2019, Lacuna is a pottery studio based in Goa and born out of Tanushree's desire to create a small, yet distinctive universe of hand crafted pieces with a soul. "My approach to design is driven by shape, form and texture and how these three elements coalesce together to give shape to different ideas in unique and different ways." Getting candid with us, Tanushree reveals that to an extent, she feels like an outsider to the world of art, but in that, she has found a brand new perspective to creating ceramics. She doesn't have a fixed view on what can or can't be done.



Clay is my material of choice. It is a remarkably versatile medium of creative expression for anyone who loves working with their hands.

— Tanushree Singh, Founder, Lacuna



SANJEEV AGRAWAL

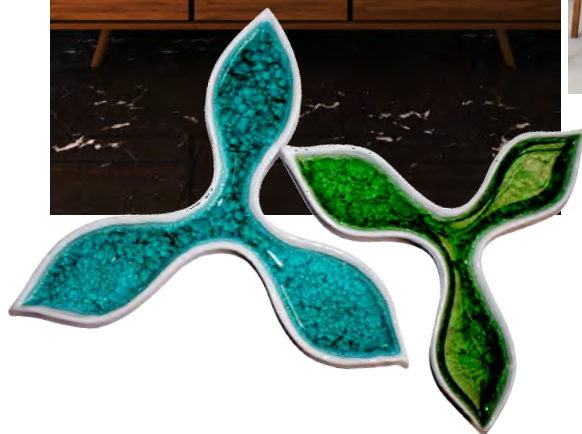
Founder, Orvi Surfaces

Of a bespoke nature

For Sanjeev, every bespoke surface or project from Orvi is focused on reviving artisanal techniques, blending creativity with craftsmanship and technology with tradition. He says, "Materials like ceramic are very special for our design discoveries. Ceramic is natural, pure and so flexible in its indigenous form. Its beauty lies in the process of firing it by hand and giving it any shape, form and texture. The material opens up new design possibilities as it can be moulded in any form, and once fired (baked), it can result in an enduring long lasting material."

Being a sustainable material, it lasts for years and once broken, harmlessly goes back to where it came from: Mother Earth.

— Sanjeev Agrawal, Founder, Orvi Surfaces



trending tables

Celebrations may be low key this year, but who said anything about making it boring? We tell you how to get the party started with fashionable tablescapes

FEATURE **AVRIL NOEL D'SOUZA**

BEYOND DESIGNS



...And where better to start than with a baroque-inspired table? Complete with glam, gold-finished candle stands and elaborate floral arrangements, this is one way to bring the bling home.



The little additions to your table...the napkin rings, condiment holders, name cards will make a big difference. Intimate celebrations require you to bring out your best colours, and these essentials are crucial.



FURSTENBERG AVAILABLE AT SOURCES UNLIMITED



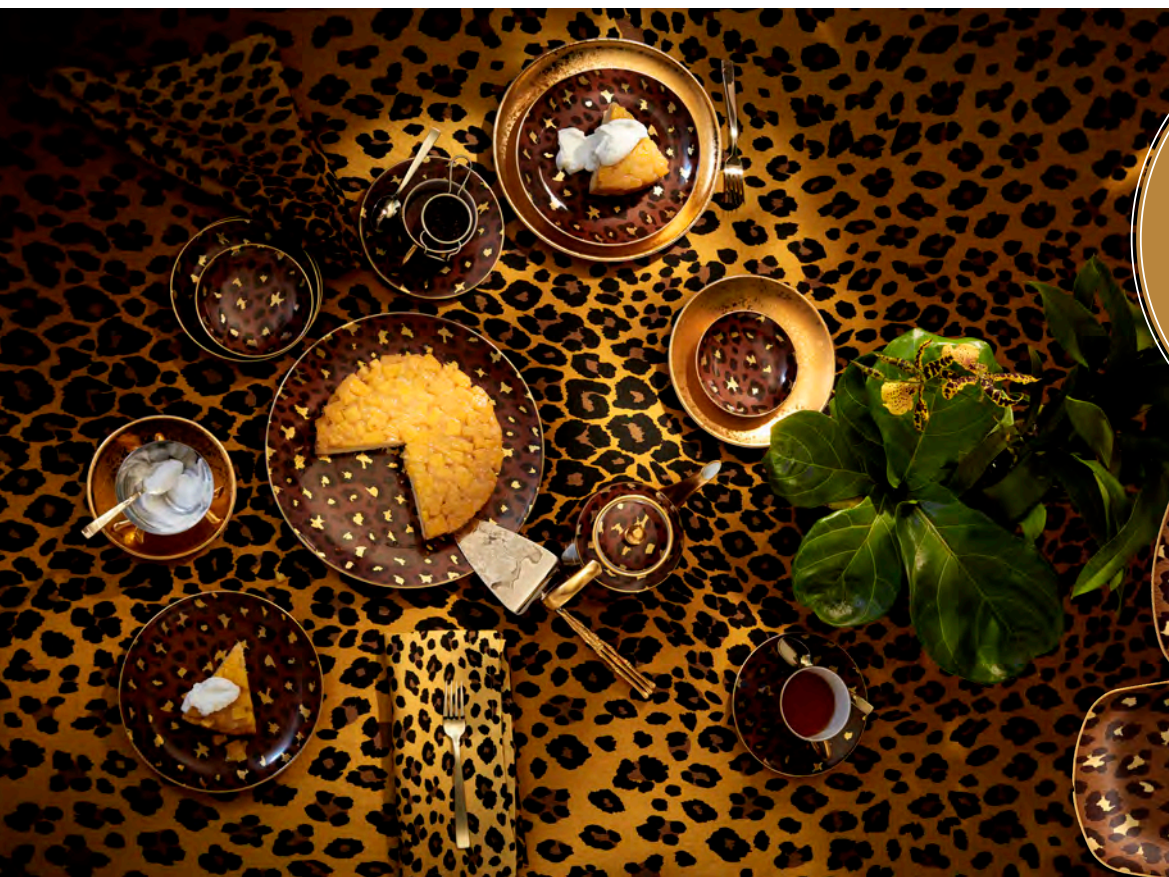
There's a certain elegance to white tableware. We love the honest relationship this colour has with a table. When it's a celebration, white plates, stands, cups and things of service, remain a popular choice!



Avant garde designs really inspire us. While we love white, we also love how geometry can shake things up. Cutting-edge designs like square plates, hexagon-shaped trays, laser cut votives...uff!



IKEA



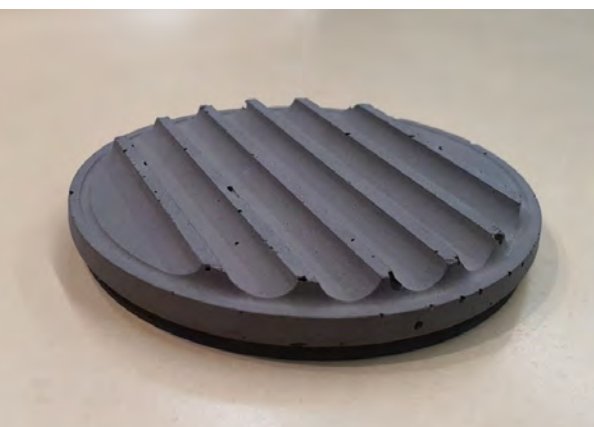
The maximalist in us can't wait to try this. Animal prints are no longer just a runway trend...they now make for daring table accessories. Layering animal-prints with lush greenery will make quite the statement.



L'OBJET AVAILABLE AT EMERY STUDIO



Can you imagine a table dressed in concrete-coloured tableware? We can, and might we say, we love this minimalistic approach. Word to the wise: The patience required to get this look right is not for the faint-hearted!



"TONE&TAD BY NUANCE STUDIO" DESIGNED BY WIZARDRY DESIGNS

Tableware that is obviously handcrafted and artisanal in nature, bring such joy to a setting. Learn to embrace their imperfections and make them a proud part of your festive tidings.



SCRIPT



A table decked up entirely in glassware, is reminiscent of a Cinderella vibe. Fairy tales aside, the delicate tenor of this tablescape would best suit our favourite course of any meal, dessert!

[Click here](#)
TO READ MORE

YASANCHE - SERVEWARE

A GRAND ADDRESS

Designed by Design Architect Pulin Shah, this Kolkata Residence is a shining example of scale, grandeur and style

It's seldom that we find high ceilings in urban dwellings. And that was what attracted design architect Pulin Shah to this project. Sprawling over 11000sqft, with really high ceilings this Kolkata residence gave him the opportunity to experiment with scale.

The sheer expanse of this project takes your breath away! The elegantly crafted cornices, the grand drop lights, the high ceilings, everything about this space is truly mesmerising.

"The most challenging part about this project was designing around the existing beams. We had to design the space in such a way that natural light came streaming in. And the most important part, the owners wanted it to be a right mix of luxury and warmth," informs Pulin.

"The site gave me scope to experiment with scale. For instance, the dining room is grand and expansive with really high ceilings, while the adjoining informal foyer has a very low ceiling," says Pulin.

Pulin enjoyed not only designing and executing this site but also added elan, style and heightened luxury by using his favourite brands. He used exquisite marble and fabulous drop lights as the client wanted opulence and did not shy away from ostentatious additions of art, rugs, curios and lights. Furniture was another very important aspect of the styling, designing and comfort of the residence and he got to use his favourite Indian brand Ravish Vohra Homes. Even the carpets and wallpapers are custom-made. This project truly is the epitome of luxury.

“

THE MOST CHALLENGING PART OF THIS PROJECT WAS TO DESIGN AROUND THE EXISTING ARCHITECTURAL FEATURES LIKE THE CORNICES AND BEAMS.

— Pulin Shah, Founder and Design Architect, Kai Design

Facebook: Pulin Shah, Instagram: pulinshah



FEATURE **SEEMA SREEDHARAN** PHOTOGRAPHS **NICK FORD**

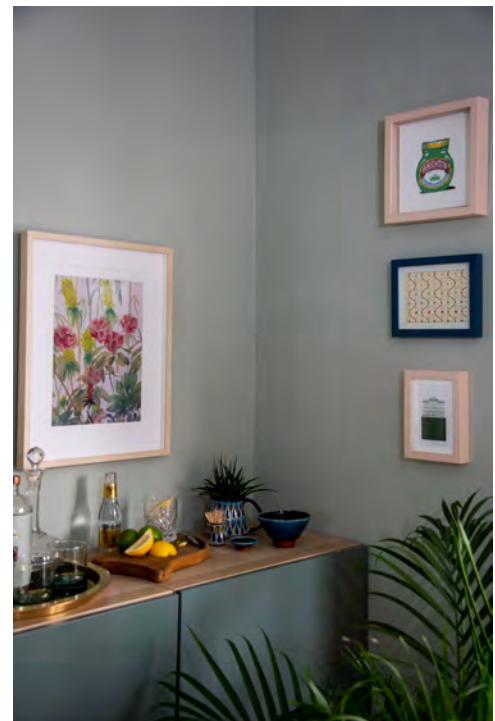
Interior Designer

He was the youngest on the popular Netflix reality design show - Interior Design Masters. He was also the strongest contender. Frank's design aesthetics veers towards maximalism and he loves a challenge when it comes to designing spaces. He loves all things India, and we love that about him. He's an emerging name in the world of interior design, he intends to make his presence felt on the Indian design scene.

What started off as a simple paint job became a full-fledged renovation project. Frank Newbold removed the fireplaces, refitted the staircases, wallpapered the ceilings...all this during the lockdown!

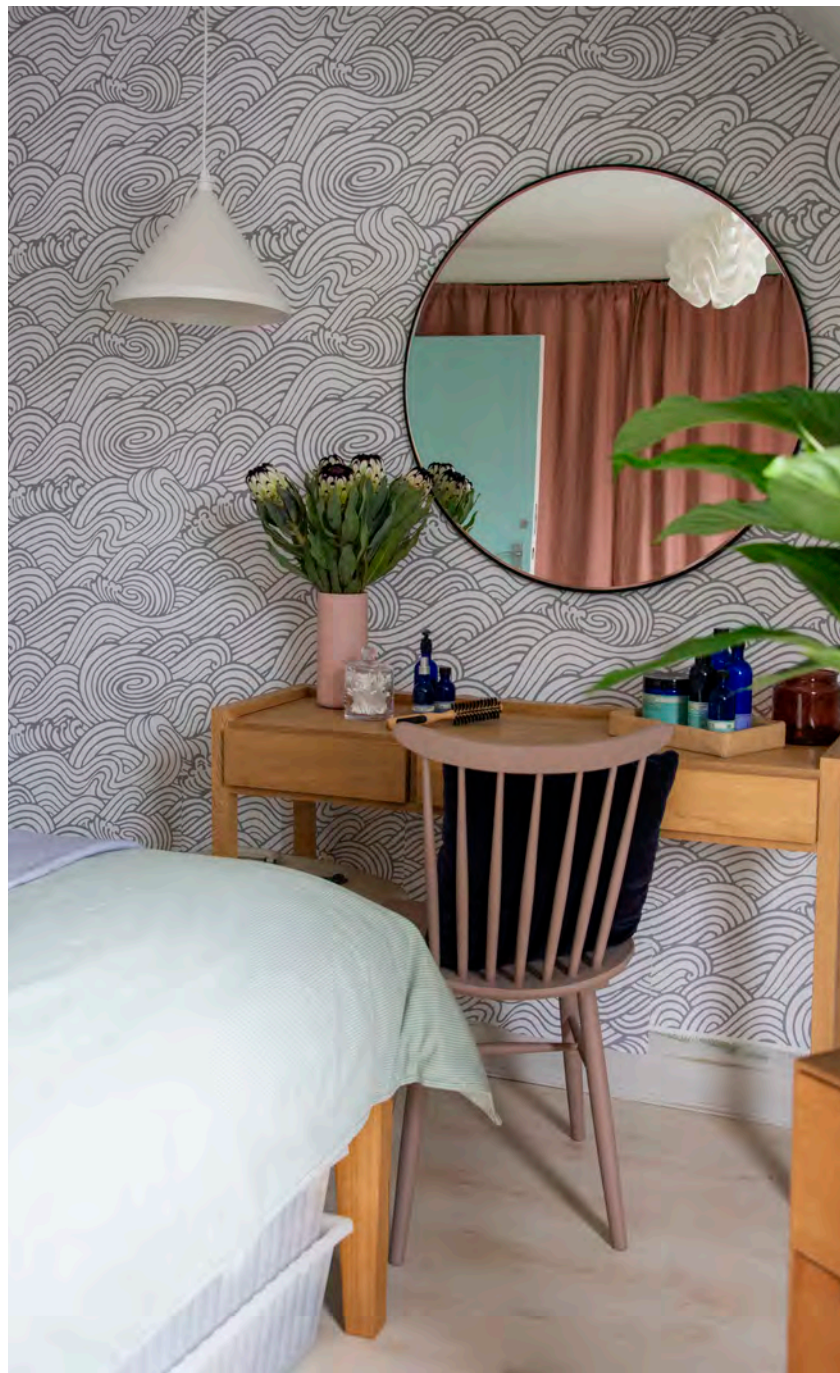


This two-bedroom Victorian apartment in Brighton was in dire need of some love and attention after not being decorated for over a decade. The old space was dated, dark and didn't accommodate the owners changing needs of being a home and holiday rental.



THE RENOVATION WAS DONE THROUGHOUT THE COVID-19 LOCKDOWN IN BRITAIN. IF I HADN'T HAD THE HOUSE TO FOCUS ON, I THINK I WOULD HAVE GONE CRAZY. IT WAS THE PERFECT ANTIDOTE TO THE LOCKDOWN.

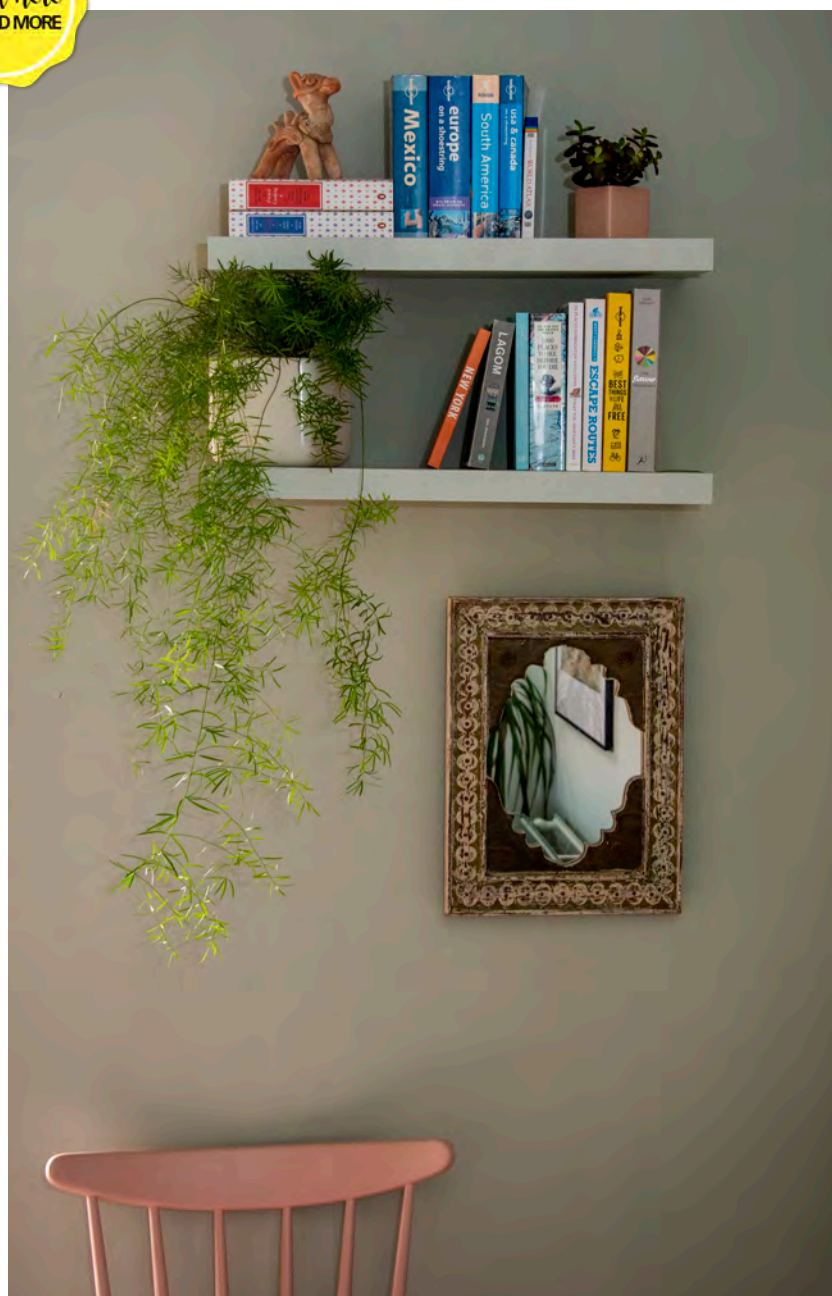
— Frank Newbold, Interior Designer



“

In this new day and age of a new normal, you should be brave and creative with your interior choices. Ensure the space reflects you, as home really is the most important place in the world.

— Frank Newbold, Interior Designer



“

**THE COLOUR PALETTE
THROUGHOUT THE PROPERTY
INCORPORATES SHADES OF
BLUE AND GREEN THAT WORK
WELL IN PERIOD PROJECTS.**

**ACCENTS OF PINK RUN
THROUGHOUT THE SPACE WITH
A MIX OF PRINT AND PATTERN
THAT LENDS A SUBTLE NOD TO
THE BRITISH SEASIDE.**

— Frank Newbold, *Interior Designer*

ALL THINGS DELICATE

Shilpa and Sameer Balvally of Studio Osmosis perfect the prettiest colour scheme of pastels for this delightful one-and-a-half BHK in Mumbai

FEATURE **AVRIL NOEL D'SOUZA**
PHOTOGRAPHS **ISHITA SITWALA**

PROJECT



“

The living room is our favourite space. It's filled with personal memories and artwork created by the client. This emotional connect is of utmost value.

— Shilpa Jain Balvally, Co-founder, Studio Osmosis



On account of the homeowners' aging parents, the design of this home has been kept as minimalistic as possible. Other than functional requirements, the only brief the architect duo received was that this home should be a happy place. A delicate scheme of pastels, minimal furniture and a clutter-free layout, achieve this brief. Rather than embracing any trend, this 650sqft home in Mumbai reflects a pure and honest connect with the people occupying it. The design is timeless, as it was important that each time the residents return to this space, they forget about the outside world and just sink in.

Click here
TO READ MORE



SHILPA JAIN
BALVALLY &
SAMEER BALVALLY

Co-founders, Studio Osmosis

With almost two decades of architecture, interior designing and planning experience, Shilpa Jain Balvally and Sameer Balvally started their own practice, Studio Osmosis in January of 2010. From A-list homes to hip restaurants, their multidisciplinary firm has transformed spaces with a knack for providing that distinction that makes them stand apart from the rest.

“
The highlight of the design is
how the walls set the dialogue
of the house.

— Shilpa Jain Balvally, Co-founder, Studio Osmosis

PROJECT

INSPIRED INDIAN

Designed by Sneha Nair and Abhay Prahaladhan of Stratosphere Studio, this Chennai-based home reflects the rich heritage of its owners

FEATURE **AVRIL NOEL DSOUZA** PHOTOGRAPHS **ARKA**



It's a tale of most households...a family of three, who had lived most of their lives in Chennai and Mahabalipuram, moved to the United States of America in the early 2000s. When it was time for them to pack their bags and permanently return to their roots, they wanted their abode to reflect their modern aesthetics while being steeped in detailing that reflected their traditions, heritage and the beautiful memories they so cherished. Sneha Nair and Abhay Prahaladhan have created a home that can only be described as the best of both worlds!

PROJECT



SNEHA NAIR AND ABHAY PRAHALADHAN

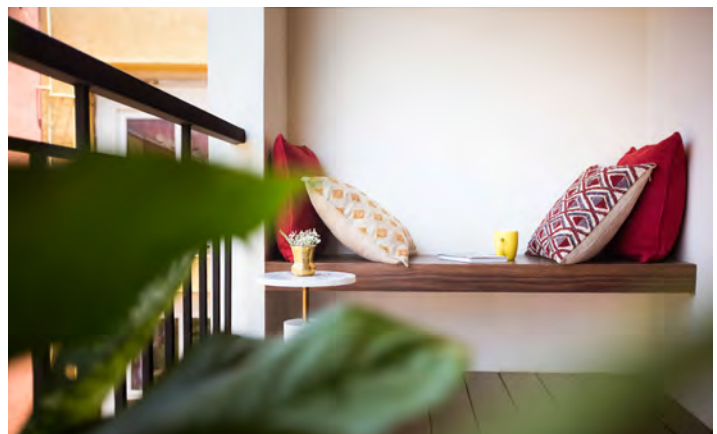
Co-founders,
Stratosphere Studio

Stratosphere Studio is a young architectural design practice, which functions between Madras, Mumbai, Manipal and Madrid. Founded by Abhay Prahaladhan and Sneha Nair, the firm is gathering much attention owing to the calibre of design work coming out of their ateliers. The firm is known to play with textures, patterns, forms and colours... It's the bold application process that they bring to the table that truly sets them apart.



AT THE OUTSET, THE MOOD BOARD WAS FILLED WITH TRADITIONAL SOUTH INDIAN ELEMENTS AND MODERN COMFORTS. THE ECLECTIC THEME LEANED TOWARDS A MIX OF TIMBER, BAMBOO, ITALIAN MARBLE, RUSTIC PAINT FINISHES, SUEDE AND BRASS.

— Sneha Nair, Co-founder, Stratosphere Studio





MODERN HERITAGE

Stepping out of the stark minimalistic style of contemporary architecture,
The Suncourt House by Ace Associates incorporates the classic India-
Modern aesthetics replete with modern amenities

FEATURE **NITIJA IMMANUEL** PHOTOGRAPHS **TEJAS SHAH PHOTOGRAPHY**



“To keep the court as the focal point, we have introduced the water body inspired by the Varanasi Ghats.”

Ashish Patel, Principal Architect, Ace Associates





ASHISH PATEL & NIKHIL PATEL

Principal Architects,
Ace Associates

Ace Associates is a practice of young architects who provide innovative and environmentally sustainable architecture which is driven by function, clarity and beauty. The firm provides in-house design solutions in various aspects of projects to a diverse clientele ranging from institutional, residential, commercial and hospitality.

We wanted to create a modern shelter with updated amenities while staying firmly rooted to the India modern design aesthetic

Nikhil Patel, Principal Architect, Ace Associates



The Suncourt House is inspired by the traditional open roof Indian houses where the sun court is the heart of the house, which brings natural light as well as ventilation to the space.

Click here
TO READ MORE



THE BEST OF BOTH!

This New Delhi home by designer Anika Mittal Dhawan of Mold Design Studio, celebrates India Modern as a lifestyle and a design sensibility!

FEATURE **AVRIL NOEL DSOUZA** PHOTOGRAPHS **ANDRE FANTHOME**



The use of materials such as terrazzo, cement, brass, exposed brick and pinewood ensures that everything is recyclable or eco-friendly.



— **Anika Mittal Dhawan**, Founder & Director, Mold Design Studio

ANIKA MITTAL DHAWAN

**Founder & Director
Mold Design Studio**

An architect and urban designer with over 15 years of experience, Anika Mittal Dhawan is the founding director of Mold Design Studio, a multidisciplinary design practice based out of New Delhi. She is also Founding Partner of Amalgam, a design studio that specialises in using the traditional Indian craft of inlay to redefine the contemporary Indian aesthetic as a blend of convention and modernity.



PROJECT



Home to a young couple with a darling toddler, the owners wanted their home to find the perfect balance between public and private spaces. As they entertained a lot, Ankita wanted to create a space that could evolve with their every need. This translated into the creation of functional spaces that are engaging and interactive. You could say, this home is crafted for conversations - from the aesthetics, being the vibrant colour palette and generosity of prints, to the open-plan nature of the home that draws one in with ease. We love how this home evokes a feeling of nostalgia.



PROJECT

IN A ZEN GARDEN

Designed by Mumbai-based Quirk Studio, the Jardin Home, as they call it, is a picture of restrained calm

FEATURE **SEEMA SREEDHARAN** PHOTOGRAPHS **KUBER SHAH**



QUIRK STUDIO

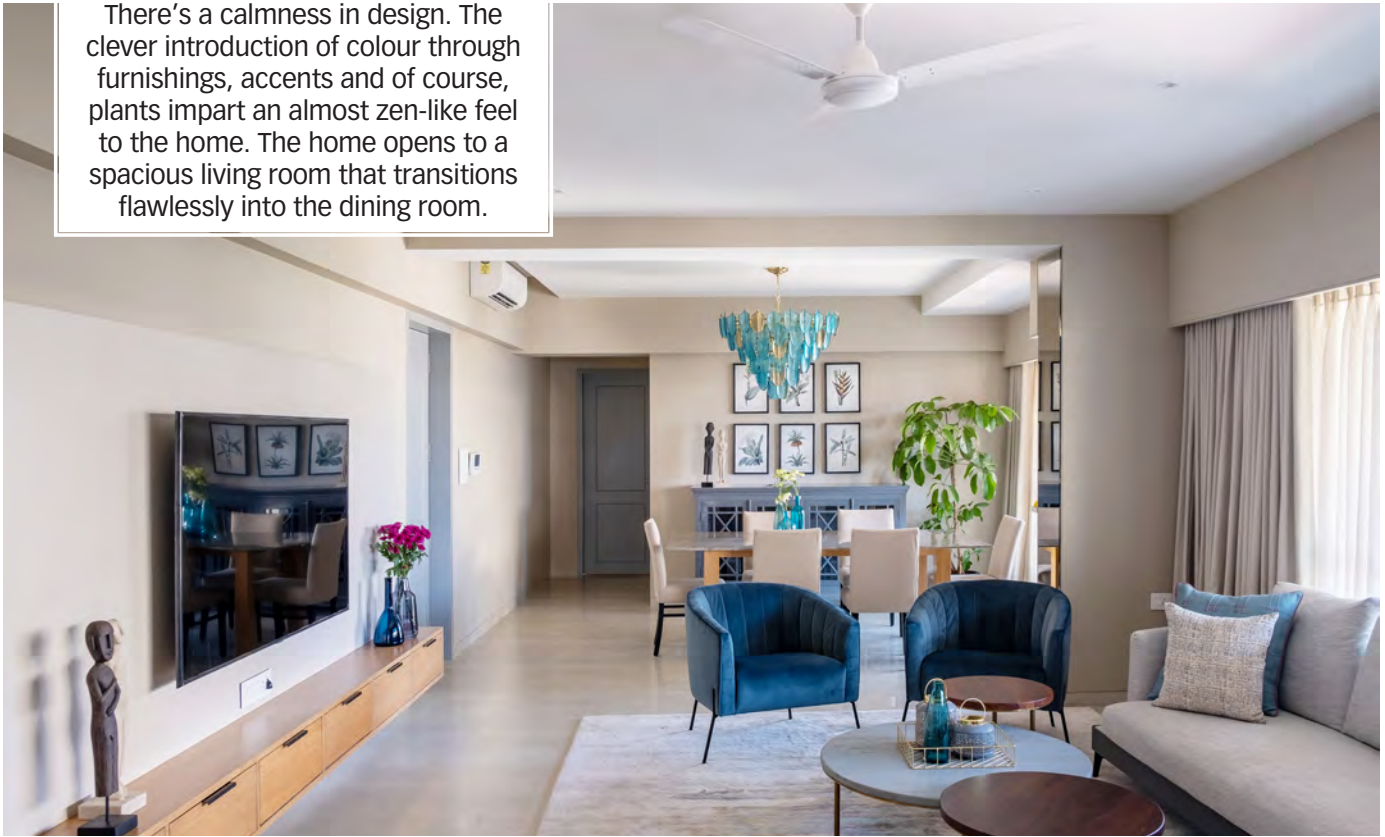
Disha Bhavsar and Shivani Ajmera,
Founders, Quirk Studio

Founded by Disha Bhavsar and Shivani Ajmera in 2013, Quirk Studio's design philosophy is to find simplicity in clutter and to create in order to inspire. The young designers are known for their restrained and measured approach to design. Quirk Studio's goal is for its designs to have the power to transport you into another world, allow you to dream and most importantly, evoke an emotional response.

The natural blend of neutral and monochromatic palettes exudes a sense of calmness and well-being within the home.

PROJECT

There's a calmness in design. The clever introduction of colour through furnishings, accents and of course, plants impart an almost zen-like feel to the home. The home opens to a spacious living room that transitions flawlessly into the dining room.



“

In a nutshell, the Jardin Home stays true to its name (French for garden) and allows members of the family to experience cohesive, dynamic and regal spaces that deepen a connection with nature.

— Disha Bhavsar, Co-Founder, Quirk Studio



BLOSSOMING LIKE THE LOTUS FLOWER

Designed by Vipul Patel Architects, this Ahmedabad home creates a stunning symphony with its surroundings

FEATURE **SEEMA SREEDHARAN** PHOTOGRAPHS **MAULIK PATEL/INCLINED STUDIO**



They call it the Tamara Villa...and for a reason. Tamara translates to a 'blooming lotus flower'. A flower that signifies purity, enlightenment, and self-regeneration. This home too emerges like a blooming lotus amidst its verdant surroundings. Designed for a family of four on the outskirts of Ahmedabad, India, the project exemplifies an idiosyncratic oeuvre that ranges from architecture, through the interior, to the landscape. The brief was straightforward, "to create a family home, that gives each of its inhabitants their own personal niche," says Ronak Patel, Lead Architect, VPA Architects.



VIPUL PATEL

Founder, Vipul Patel Architects

Vipul Patel Architects (VPA) was found in 1994. Since then, VPA has completed various projects in the field of architecture, interior designing, landscape designing and product designing. Aesthetics and practicality are at par in all their works. The projects are an amalgamation of ideas, team work and creativity.



The Tamara Villa stands proudly on a plot that spreads across 65,900sqft. But what's commendable is the fact that the home just takes up 6250ft of the total area. "This ratio of the built and unbuilt gave us the opportunity to explore the landscape as a medium to enhance the charm and beauty of the project. The idea was to feel connected to the outdoors and create a living within a garden typology.



THE SYMBOL OF 'TAMARA' IS OMNIPRESENT AROUND THE HOUSE. YOU SEE IT AT THE ENTRANCE WATERBODY, SCREEN MOTIFS, FURNITURE PIECES, FLOORING, ETC...IT GIVES A SENSE OF CONTINUITY TO THE DESIGN.

— **Ronak Patel**, Architect, Vipul Patel Architects

ABCD

AA Living www.aa-living.com

Rajul Apartments, 9 Harkness Road Near Elizabeth Hospital, opposite State Bank of India, Mumbai,

Maharashtra 400006, 22 2368 3985

Anemos www.anemos.in

11/12, Krishna House, Ground Floor, Raghuvanshi Estate, Senapati Bapat Marg, Gandhi Nagar, Upper Worli, Lower Parel, Mumbai, Maharashtra 400013, 22 2493 4306

Bael Botanicals

www.instagram.com/baelbotanicals

BARO www.baromarket.in

12, Sun Mill Compound, Tulsi Pipe Road, Lower Parel, Near Manyavar, Mumbai, Maharashtra 400013, 22 4034 4888

Beyond Designs www.beyondesign.in

Classic Marble Company

www.classicmarble.com

15 Village Road, Subhash Nagar, Next to, Raycon IT Park Rd, Bhandup (W, Mumbai, Maharashtra 400078, 22 4140 4140

Dyson www.dyson.in

EFGH

Ellementry www.ellementry.com

Shop LG 08, Infiniti Mall, New Link Rd, Malad West, Mumbai,

Maharashtra 400064, 91166 12813

EMERY STUDIO

www.instagram.com/emerystudio.in

Eureka Forbes www.eurekaforbes.com

Fanusta www.fanusta.com

96, Sirsi Rd, R.F.C. Colony, Hanuman Nagar Extension, Officers Campus Colony, Vaishali Nagar, Jaipur, Rajasthan 302021

Fendi Casa www.fendi.com

Glas Italia www.glasitalia.com

Gulmohar Lane www.gulmohar.com

H-1267-1268, Phase 3, Behind Bombay Hospital, Sitapura Industrial Area, Sitapura, Jaipur, Rajasthan 302022, 88240 40096

Hands Carpets www.handscarpets.com

Gala no. 32/ R & 32/ H, Laxmi Industrial Estate, New Link Rd, Andheri West, Mumbai, Maharashtra 400053, 22 2632 0609

Harshita Jhamtani Designs

www.harshitajhamtani.com

Humming Tree www.hummingtree.in

Near Malabar Hospital, Erannhippalam, Erannhippalam, Kozhikode, Kerala 673020, 4534 924 368

IJKL

IDUS www.idus.in

IKEA www.ikea.com/in/en

Jade Design House

www.jadedesignhouse.com

JBL in.jbl.com

Lacuna www.instagram.com/lacunastudiogo

MNOP

Nivasa www.nivasa.com

Shop Number 296 & 298, Sultanpur,

Mehrauli-Gurgaon Rd, Sultanpur,

New Delhi 110030, 11 2680 3684

NUANCE STUDIO

www.thenuancestudio.com

290A, 4th floor, 34th cross, 9th Main Road,

4th Block, Jayanagar, Bengaluru,

Karnataka 560011, 80 4099 8777

Oriri Studio www.oriristudio.com

249, 1st Main Rd, HIG Colony, Nagashetty

Halli, R.M.V. 2nd Stage, Bengaluru,

Karnataka 560094, 98806 08918

ORVI Surfaces www.orvi.com

Philips www.philips.co.in

Prestige www.prestigexclusive.in

QRST

Script www.scriptonline.com

Ground Floor, 4A Godrej Bhavan Charanjit

Rai Marg, Opposite Bombay Gymkhana, near

Sterling Cineplex, Fort, Mumbai,

Maharashtra 400001, 22 2205 9702

Seetu Kohli Home

www.seetukohlihome.com

H 5/2, Haveli, Ambawatta One, Kalka Das

Marg, Behind Qutub Minar, Mehrauli,

New Delhi 110030, 99999 66702

Sources Unlimited

www.sourcesunlimited.co.in

B-805 Hubtown Solaris, N.S. Phadke Road,

Opp. Telli Gully, Andheri East, Mumbai,

Maharashtra 400069, 22 6210 1700

UVWXYZ

White Hill Studio www.whitehillstudio.com

Wizardry Designs www.wizardry.co.in

Yasanche www.yasanche.com

Xaka www.xakacutlery.com

