

# GoodHomes

INDIA

A Times of India Publication  
VOLUME 14 ISSUE 04 JULY 2021

GOOD DESIGN CHANGES EVERYTHING

@goodhomesmagazine  
@goodhomesmagazineindia  
@goodhomesindia

## THE EXPERTS HAVE SPOKEN

A+A Design Studio    Spaces And Design  
Alkove Design       Studio Ritika  
By The Riverside     Bhasin Design  
Design Lab Vyoma    Studio Taan  
Kalakriya            Taliesyn  
MuseLAB            ThinkCutieful  
PI Designs            Whitespace  
Purple Backyard      ZXP Design

*The New  
Minimalist*

FIND OUT IF THIS  
STRIPPED DOWN  
STYLE IS FOR YOU

## BRILLIANT BY DESIGN

*Restore the balance at home,  
one room at a time*



# CONTENTS

July 2021



## 08 SHOPPING

- 08 MOODBOARD
- 10 GET THE LOOK
- 12 HOT RIGHT NOW

## 14 SPECIAL FEATURE

- 14 THE SIMPLE LIFE
- 16 MAGIC OF SURFACES

## 29 HOMES

- 29 THE ART OF SIMPLIFYING EXTRAVAGANCE
- 33 SERENE LUXURY
- 36 STEEPED IN DISTINCT STYLE
- 39 MOVING CONTINENTS, FINDING HOME
- 42 IN RESPONSE TO THE NEW WORLD
- 45 AT PEACE, AT HOME
- 48 ELEVATED LIVING



**THE COVER**  
FEATURE AVRIL NOEL D'SOUZA  
PROJECT BY MUSELAB  
PHOTOGRAPH SAMEER TAWDE

# INDIA'S FIRST CURATED LUXURY LIVING SHOW IS COMING TO BANGALORE!

**TEJAS**

AUTOMATION | LIGHTING | HOME CINEMA

PRESENTS

**D/code**

A Times Group Initiative

CURATED BY

Shernavaz  
Bharucha

**S O U T H   E D I T I O N   2 0 2 1**

HOME & DESIGN

**TRENDS**

TO PARTICIPATE, COLLABORATE AND KNOW MORE,  
WRITE TO US AT [DCODE@WWM.CO.IN](mailto:DCODE@WWM.CO.IN)  
FOLLOW US @ [@\\_DCODE](https://www.instagram.com/_dcode)



# NEXT ISSUE

Have we got a stellar line up for you next issue! We bring you some of the most inspiring, innovative and path-breaking refurbishing projects that will tempt you to change the way you live. Are you ready for this change?



Calling all stylists – especially those based in New Delhi and Mumbai. Quick! Send us your resume if you'd like the opportunity to work with us.  
Email:  
[goodhomes@wwm.co.in](mailto:goodhomes@wwm.co.in)

# GoodHomes

**CEO**  
DEEPAK LAMBA

**EDITOR IN CHIEF**  
RONITAA ITALIA

**Associate Editor** Avril Noel D'souza  
**Senior Features Editor** Tina Thakrar  
**Content Producer** Radhika Sheno  
**Senior Editorial Coordinator** Harshal Wesavkar  
**Deputy Art Director** Shalaka Shinde  
**Senior Graphic Designer** Anushree Kumar

**Chief Financial Officer** Subramaniam S.  
**Head Human Resources** Meghna Puthawala  
**Printer & Publisher** Sunil Wuthoo  
**Content Studio** Vidyut Patra  
**Head Marketing & Digital Solutions** Priyadarshi Banerjee  
**Marketing Manager** Chandni Chopra

**SALES HEAD**  
SUNITA QUADROS

## BRAND SOLUTIONS

**WEST**  
MUMBAI  
**Vice President**  
- Brand Solutions &  
Business Head  
- Femina Salon & Spa  
Gautam Chopra  
[gautam.chopra@wwm.co.in](mailto:gautam.chopra@wwm.co.in)  
**PUNE**  
Aditi Shrivastava  
[aditi.shrivastava@wwm.co.in](mailto:aditi.shrivastava@wwm.co.in)

**NORTH**  
**Vice President & Sales Head**  
- Long Format Content  
Anjali Rathor  
[anjali.rathor@wwm.co.in](mailto:anjali.rathor@wwm.co.in)  
**EAST**  
**Assistant Vice President**  
Alka Kakar  
[alka.kakar@wwm.co.in](mailto:alka.kakar@wwm.co.in)

**SOUTH**  
**Vice President - South**  
& Business Head  
- Femina Tamil  
Pravin Menon  
[pravin.menon@wwm.co.in](mailto:pravin.menon@wwm.co.in)

## SUBSCRIPTIONS

Asha Kulkarni, Manager Marketing  
[asha.kulkarni@wwm.co.in](mailto:asha.kulkarni@wwm.co.in)

**Senior Manager, Subscription**  
Sakshi Kate, [sakshi.kate@timesgroup.com](mailto:sakshi.kate@timesgroup.com)  
**Editorial Enquiries** [goodhomes@wwm.co.in](mailto:goodhomes@wwm.co.in)

## FOR SUBSCRIPTIONS

**Online:** [mags.timesgroup.com](http://mags.timesgroup.com)  
**SMS:** GHSUB 58888  
**Mail:** [subscriptions.wwm@wwm.co.in](mailto:subscriptions.wwm@wwm.co.in)  
**Call:** 18001210005  
(All India toll free number)

GoodHomes takes no responsibility for unsolicited photographs or material. All photographs, unless otherwise indicated, are used for illustrative purposes only.

For marketing queries, e-mail [goodhomes@wwm.co.in](mailto:goodhomes@wwm.co.in), For editorial queries, e-mail [goodhomes@wwm.co.in](mailto:goodhomes@wwm.co.in)

Printed and published by Sunil Wuthoo on behalf of owners Worldwide Media Pvt Ltd, The Times of India Building, Dr DN Road, Fort, Mumbai 400001, and printed at Rajhans Enterprises, No 134, 4th Main Road, Industrial Town, Rajajinagar, Bengaluru 560044, and published at Worldwide Media Pvt Ltd, The Times of India Building, Dr DN Road, Fort, Mumbai 400001 Processed at Colour Processing, The Times of India Suburban Press, Kandivali, Mumbai 400101

All rights reserved worldwide. Reproducing in any manner without prior written permission prohibited

CIN: U22120MH2003142239







THANK YOU  
FOR A  
RECORD  
BREAKING  
RESPONSE




STAY TUNED FOR MORE UPDATES

 @trendsmagind

 @trendideas

 @TRENDSMagIndia

 [www.trendsawards.in](http://www.trendsawards.in)



PHOTOGRAPH ABHEER DHANU

**WRITE TO ME** [goodhomes@wmm.co.in](mailto:goodhomes@wmm.co.in)  
**SUBSCRIBE** [mags.timesgroup.com/good-homes.html](https://mags.timesgroup.com/good-homes.html)

**FOLLOW US ON:**

**INSTAGRAM** @goodhomesmagazine

**FACEBOOK** @goodhomesmagazineindia

**TWITTER** @goodhomesindia

**LOG ON NOW** [www.goodhomes.co.in](http://www.goodhomes.co.in)

**It's** amazing how life has a way of panning out. The Universe always seems to have a plan, even though we may not agree with it most of the time.

We have all been through so much in these last couple of years. I don't know a single person untouched by the pandemic. There has been so much suffering all around. And as they say, with great suffering comes great transformation. So, while I realise the pandemic is far from over, we have already encountered some intense humanitarian rewiring. The changes, we can only hope, are positively long term.

I have to confess, with all that I've seen, heard and observed in these days, it's the evolution of the home space that has excited me the most. (You could totally accuse me of being biased here!) I'm thrilled to bits about how much attention we've all started paying to our filial environments. The effort we made towards ensuring comfort and convenience for our families as well as ourselves. All in all, the care we took to ensure that our homes enjoyed having us around made us appreciate our personal spaces that much more.

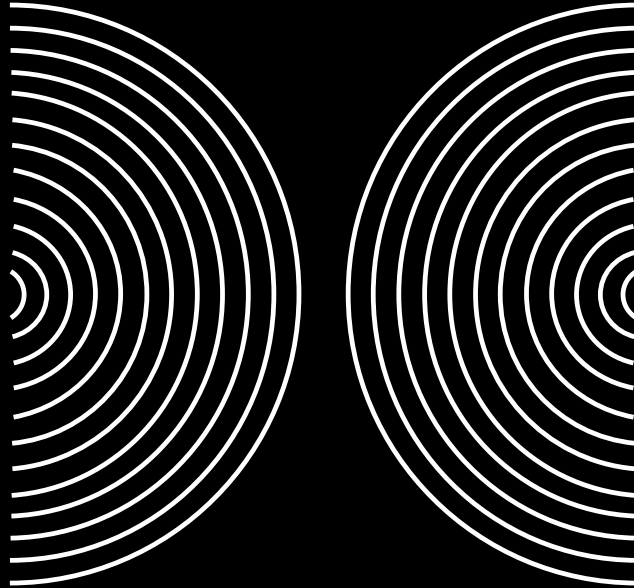
There's also a lot to be said about being grateful for all that we have been blessed with. Here's to all of us...for surviving this, or rather for making it through. The fact that you're here, reading this, is a great sign. This issue is dedicated to all of you.

**RONITAA ITALIA**  
**Editor in Chief**



ANNOUNCING

THE ECONOMIC TIMES



DESIGN  
COUNCIL

THE AID THINK TANK

Brought to you by



An Economic Times Initiative

Powered by

HOME & DESIGN  
**TRENDS**  
**GoodHomes** INDIA

@trendsmagind  
@trendideas  
@TRENDSMagIndia

@goodhomesmagazine  
@goodhomesmagazineindia  
@goodhomesindia  
www.goodhomes.co.in



INHABIT



ELLEMENTRY

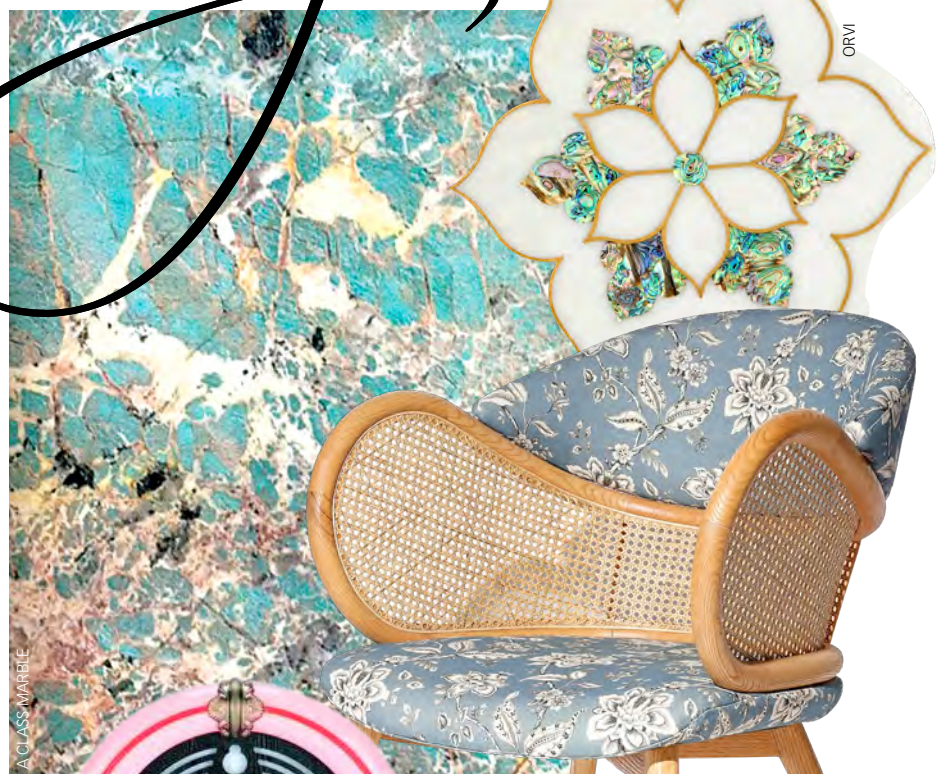


EMERY STUDIO

July



MAISHAA



ORVI

## BUBBLEGUM DAYS

Energising and delicate...this happy pastel palette is elegant and easy to bring home

FEATURE **AVRIL NOEL D'SOUZA**

Shopping Guide on Pg 51



ANEMOS



BEYOND DREAMS



# WE LOVE WHAT YOU

We're bringing our years of expertise and understanding of the zeitgeist together to bring you the coolest list of the brands that Indian Millennials love, carefully curated by Grazia India's editorial team. Introducing the first edition of "Grazia Most Loved Brands".

Love 

COMING SOON

GRAZIA  
MOST   
**LOVED**  
BRANDS 2021



#GRAZIAMOSTLOVEDBRANDS

[www.grazia.co.in](http://www.grazia.co.in)



UDC HOMES

# Welcome to the jungle

Inspired by the tropical rainforest

FEATURE **AVRIL NOEL D'SOUZA**



1  
Raku pot,  
Orvi Surfaces



2  
Panda bear by  
BOSA, Sources  
Unlimited.



3  
Thiru  
lampshade,  
Within.



7  
Kettle,  
Ochre at  
Home.



6  
Tray, Le  
Jahaan.



5  
Pouffee, Cane  
Boutique.

4  
Chair by SICIS,  
Tessera India.

Shopping Guide on Pg 51



# DOWNLOAD YOUR FAVOURITE MAGAZINES FOR FREE!

Stay Indoors. Stay Safe.



[worldwidemedia.in](http://worldwidemedia.in)





## THE CLEAR WINNER

Create stylish illusions with transparent glass beauties

FEATURE **AVRIL NOEL D'SOUZA**

1 Amber-coloured jars\*, **Beyond Designs**. 2 Bar designs by Christofle\*, **Emery Studio**. 3 Out and about pendant light\*, **The Whiteteak Company**. 4 Glassware\*, **Ellementry**. 5 Beehive vase\*, **Gulmohar Lane**. 6 Dew glass compote (rose gold colour)\*, **Gulmohar Lane**. 7 Glassware by Saint Louis\*, **Emery Studio**. 8 Monroe pot\*, **Gulmohar Lane**. 9 Design by Utopoa & Utility\*, **Sources Unlimited**. 10 Glass bottles\*, **Beyond Designs**.  
\*Prices on Request, Shopping Guide on Pg 51



HOT RIGHT NOW



## FUNCTIONAL SILHOUETTES

Slender, smart and pragmatic...  
the combination you are  
looking for

EATURE **AVRIL NOEL D'SOUZA**



1 Cleopatra\*, Esvee Atelier. 2 Magazine holder\*, Sage Living. 3 Esna floor lamp\*, Orange Tree. 4 Stack shelf\*, Iqrup + Ritz. 5 Trolley bar\*, Mangrove Collective. 6 Rack of frames\*, Thumbimpressions Furniture. 7 DORI high stool\*, Project 810.

\*Prices on Request

Shopping Guide on Pg 51

# THE SIMPLE LIFE

The modern minimalist revels in clean living. Chanya Kaur, Founder, The Pure Concept Home, creates style vignettes in this New Age narrative

FEATURE **AVRIL NOEL D'SOUZA** PHOTOGRAPHER **JAINA KUMAR**



“  
**FUNCTIONALITY IS KEY FOR THE MODERN  
MINIMALIST. THIS INSPIRED SUMMER LOOK IS  
LIGHTWEIGHT AND EVOKES SMART-CASUAL EASE.**

— Chanya Kaur, Founder, The Pure Concept Home





Gloda-glow rug;  
Emperador table;  
Seki Table; Slank  
sofa; Oba sofa;  
Cushions; all  
from The Pure  
Concept Home.

## HIGH ON STYLE

For this summery style, follow the less-is-more mantra. What you will get is a relaxed look with a lived-in vibe. Freestyle pieces of furniture temper down the languid nature of this setting. So, three-legged tabletops and curvilinear details offset the stark architectural elements and natural materials in this space. Saturated pastel tones like saffron, orange peel, and mauve filter through, while fresh lilies lift the mood. To reflect the mood we recommend floor seating and strategically-placed indoor plants to add a burst of vibrancy.







# Magic of SURFACES

The right surface treatment goes a long way in transforming a home. Use it to build character, add layers or simply create visual impact. Some of the country's leading design experts show you how

FEATURE **AVRIL NOEL D'SOUZA**







## EXPERT PRO TIP

In difficult spaces, style can only be achieved with the intelligent use of materials. Using a glossy and reflective surface helps to make the space look big and maintains the fluidity of the same. Warm and smooth textures combined with earthy tones help to define and to focus a small corner.

[Click here](#)  
TO READ MORE



## KALAKRIYA

Architects Swati Sinha and Nikhil Saxena, are the brains behind Kalakriya, a Noida-based design atelier. Known to create luxurious spaces with an emphasis on functionality, we find their work is always punctuated with details. For this residence, the duo opts for statement surface treatments that capture the India Modern sentiment.

## INDIA MODERN

Spread across 2,070sqft, architects Swati Sinha and Nikhil Saxena of Kalakriya punctuate this home with distinct character via vibrant surface applications. "We describe this home as witnessing the revival of an old-world charm with a modern eclectic Duco finish. It was crucial to find a balance between the finishes, for example, the 20-year-old sheesham furniture in the dining area was given a facelift with Duco finish, while the semi-finished white brick wall introduced more depth here. Similarly, in the bedroom, the wallpaper by Sabyasachi is coordinated with a sheesham four-poster bed to provide elegance plus warmth."

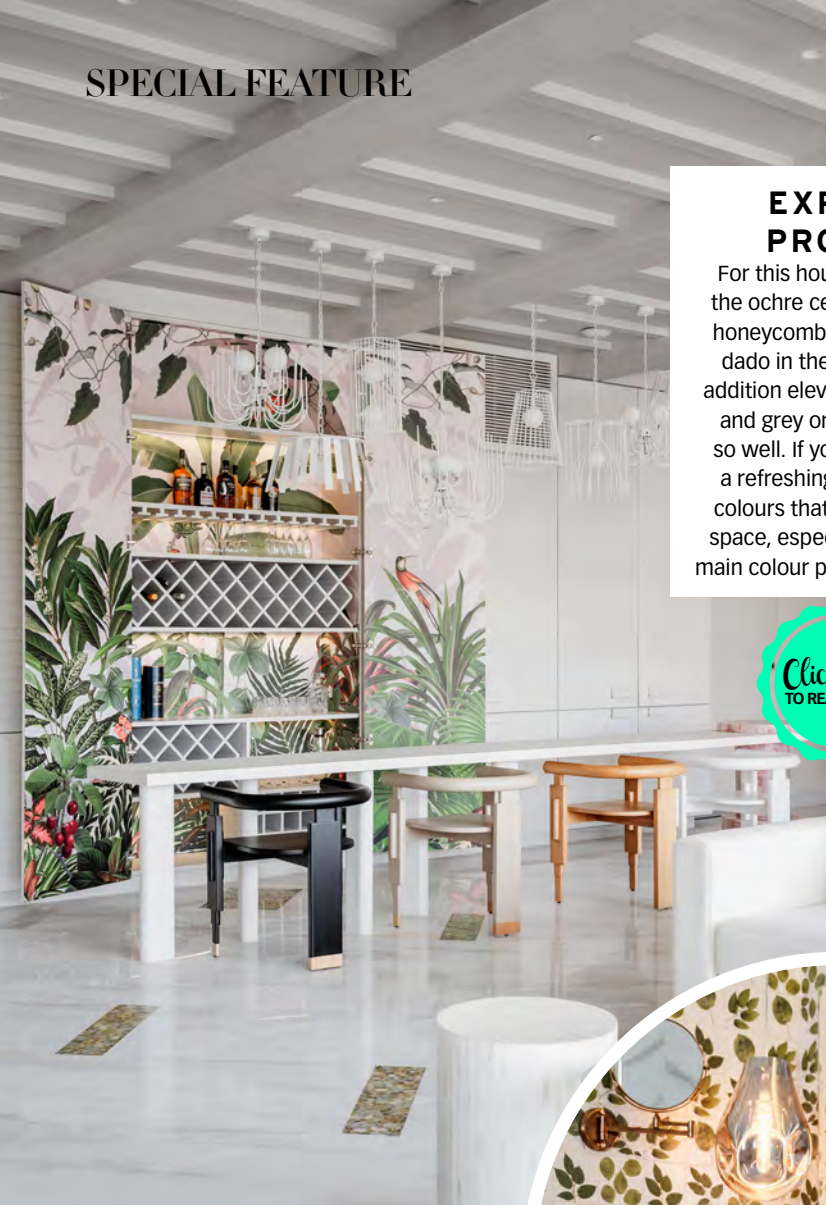




## EXPERT PRO TIP

For this house, we added the ochre cement tiles in a honeycomb pattern to the dado in the kitchen. This addition elevates the whites and grey on the cabinets so well. If you want to add a refreshing twist, select colours that can amp up a space, especially when the main colour palette is neutral.

Click here  
TO READ MORE



## PURPLE BACKYARD

Kumpal Vaid, the founder, and principal at Purple Backyard is known to create spaces that are cerebral. For this Mumbai home, the canvas is white, with tones of brown and delicate nuances of colours. From rafters on the ceiling to paneling on the surfaces, Kumpal innovates with the details to exaggerate the look.

PHOTOGRAPHS ISHI SIVWALA

## HAPPY INNOVATIONS

Kumpal Vaid masters the restrained palette to create a high-octave space. Ask her about materials and she says, "I am constantly researching on the subject. For this home we selected finishes similar to natural Indian stones, for the bathrooms, in vitrified full-body tile format. In the guest bedroom, handmade cement tiles in a candy pattern lend drama, while in the living room, I adopted a inlay technique, of Lhasa white with mop inlay in a diagonal pattern, is an I used."





## BY THE RIVERSIDE

Located in Bengaluru, Swati Seraan was roped in for the renovation of this 1,750sqft home. She did such a good job, the family decided to go full-turkey and change everything. The owners, Smita and Sarvesh, were aware their home wasn't big enough for the aesthetics they craved, but Swati worked diligently to bring all their aspirations to life.

## THE LUXURY OF MINIMALISM

*Swati Seraan of By The Riverside gets candid, "Smita and Sarvesh's home was not big enough for the magnitude of renovation they wanted...they wanted an upgrade to luxury minimalism. There is such an elaborate profusion of natural light, so I stuck to a colour palette that accentuated the space."*

*Swati's forte is natural, rustic textures, but given the needs for this home, she stuck to simple materials and smooth surfaces that reflect light. Swati introduced a single-coloured oak wood floor throughout, except for the master bedroom...further adding to the illusion of space.*

### EXPERT PRO TIP

It was not easy to curate this scheme. Smita loves florals but we did not have a family consensus on using them in large areas. I mixed checks, stripes, and a bit of floral (that you see inside the bar cabinet), to everyone's liking. Yes, it was not an easy combination to visualize, but the family trusted me.







## EXPERT PRO TIP

Before you commit to wall colour, paint a swatch and observe how it looks in different light conditions. Repeat shapes throughout a scheme to subtly help the mind read the space as a harmonious whole. Combining patterns in the same room can be tricky, but varying patterns in similar colours, or the same pattern in varying scales works well.



## ZXP DESIGN

Interior Designer and Creative Head- Smitha Zachariah of ZXP Design recently designed this 1,800sqft home in Yeshwanthpur, Bengaluru. She followed the less is more adage to create a clean and crisp style, and punctuated it with evocative surface accents to imbue an Indian Modern narrative throughout.



## BOLD ACCENTS

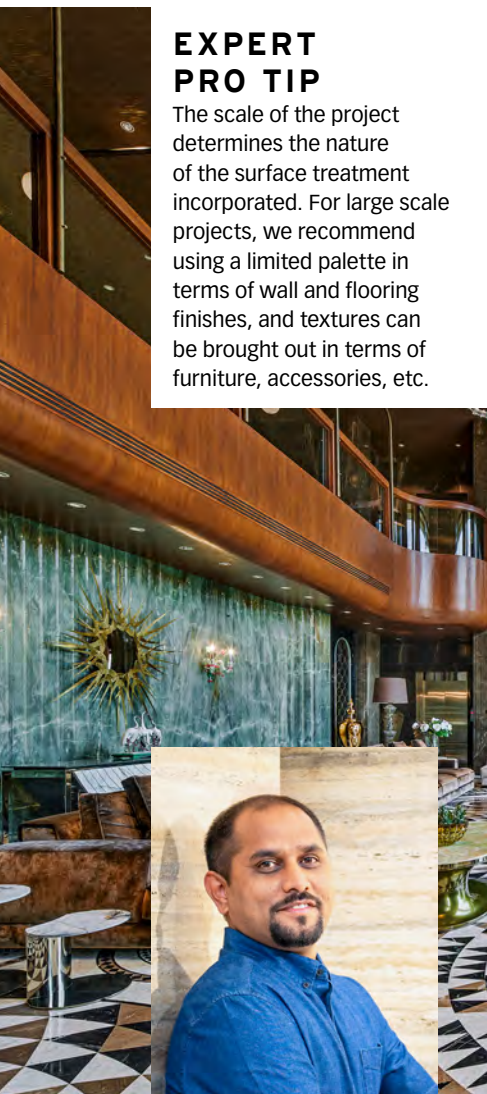
*Smitha Zachariah, Creative Head, ZXP Design believes in the power of dynamic surface treatments, "The combination of patterns, brighter colours, layering and the scale of the texture plays an important role in creating bright and vivacious spaces. Add a vibrant art piece to elevate the mood and the look of the space. Going for a bold accent wall and a palette of daring hues, can energise a room and make it appear brighter." Her pro tip is to select a colour personality that includes many shades that tell a similar story.*





## EXPERT PRO TIP

The scale of the project determines the nature of the surface treatment incorporated. For large scale projects, we recommend using a limited palette in terms of wall and flooring finishes, and textures can be brought out in terms of furniture, accessories, etc.



## TALIESYN

Architects Shalini Chandrashekar and G.S. Mahaboob Basha, are the Co-founders of Taliesyn. For Monsoon House, a 43,500sqft residence in Thrissur, Kerala, the duo say about the huge volumes and double-height wall face, surface treatments were key in curating the perception of the built spaces, and in rendering a sense of warmth and grandeur.



## LUXE EFFECT

While designing Monsoon House, architects Shalini Chandrashekar and G.S. Mahaboob Basha, first composed moodboards that paired finishes and colour palettes, this helped paint a clear picture of the end visual. Shalini adds, "For such a large scale, it is key to have a subtle approach: Use few materials while paying attention to their surface patterns. For example, for large volumes, big motifs work, for smaller, busy patterns create engagement."







### EXPERT PRO TIP

This being a theme-based makeover, the wallpaper became the focus, around which we based the rest. Colours, patterns, designs, and story-play became extensions to the creation of a stimulating space. Include scribble walls, chalk or dry erase surfaces, as they nurture free expression and build eye-hand coordination needed for later writing and drawing skills.



### THINKCUTIEFUL

ThinkCutieful is the brainchild of interior designer Romilla Tewari, who launched the children's decor company in 2009. She was roped in by the enigmatic couple, Lakshmi Menon and Suhel Seth, to transform a room in their home into a vibrant baby room for Gayatri, their daughter, and the results are flawless.

### SAFE PLAY

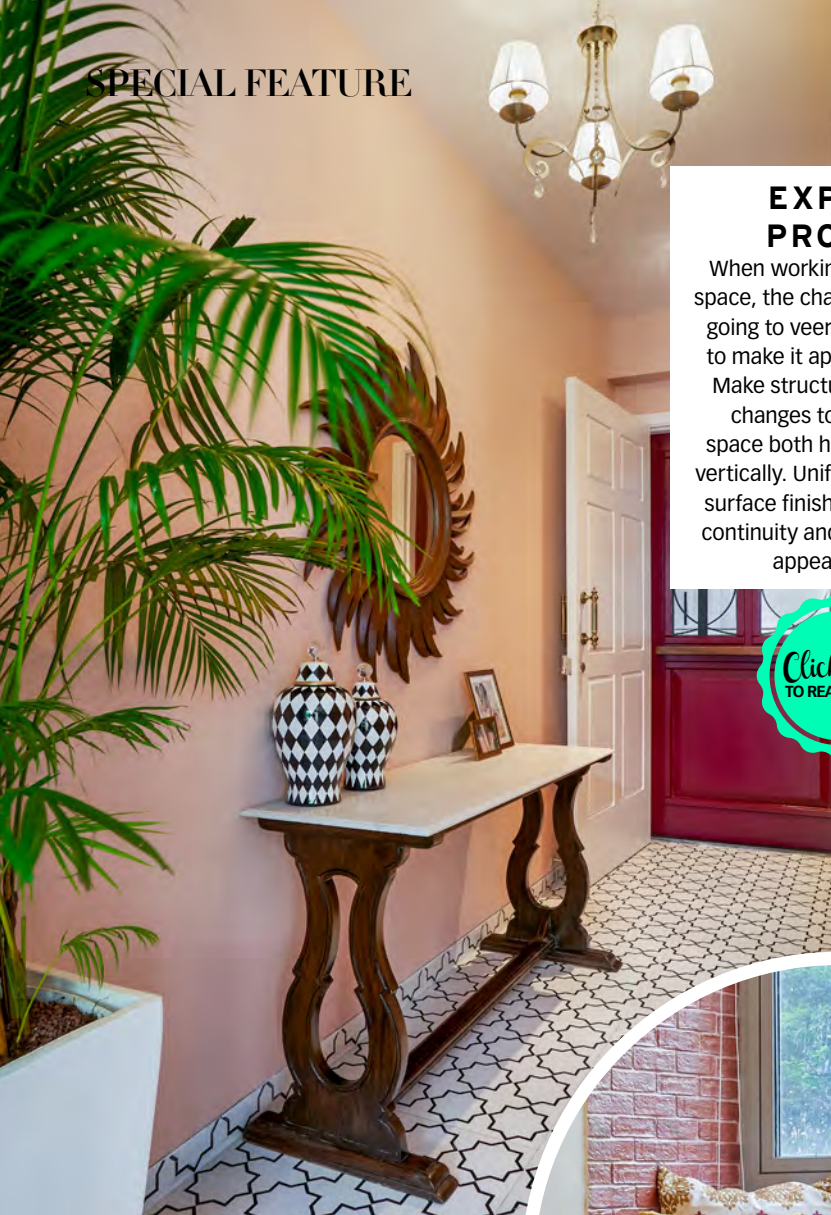
*The brief was to create an imaginative and fun space. For this jungle-themed baby's room, Romilla Tewari focused on the safety aspect of all the materials she resorted to. "Surface treatments play a key role, both in terms of safety and functionality. For Gayatri's room, it was important to focus on safe materials: Safe paints, finishes, treatments on walls and furniture...I used only safe, lead-free, non-toxic materials that were easy to clean and maintain."*



## EXPERT PRO TIP

When working with a small space, the challenge is always going to veer towards ways to make it appear spacious. Make structural and visual changes to stretch the space both horizontally and vertically. Uniform continuous surface finishes show visual continuity and make a space appear larger.

[Click here TO READ MORE](#)



## WHITESPACE

Ganesh Nair of Whitespace, is known for his distinct design approach. Spread across 1,345sqft, he crafts a vibrant home for a family of four, (a couple and their teenage daughter and son). The idea was to create vivid living areas while muting the narrative in private ones. He achieves this with exacting surface applications.

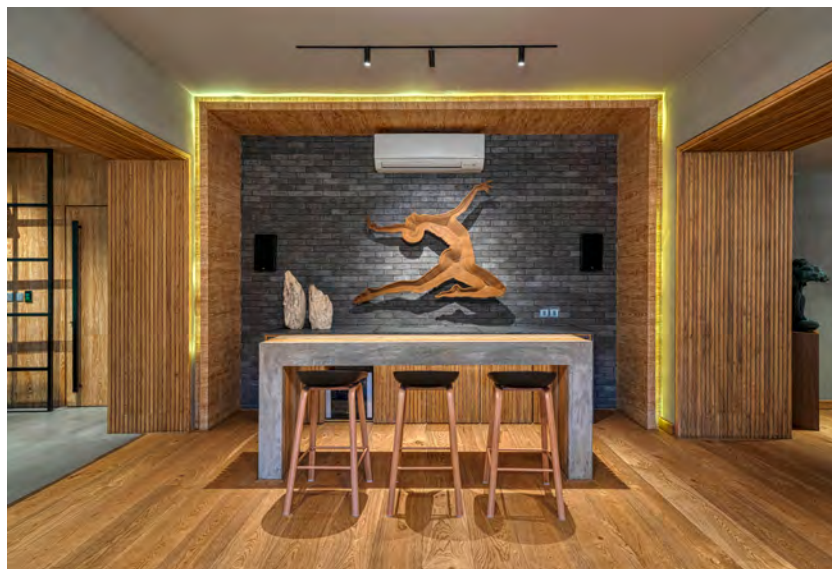
## ECLECTIC DRAMA

A motley of astute surface applications lends this Mumbai home a timeless appeal. Ganesh Nair pairs colour, texture, material, and finishes to create a vibrant, earthy, and almost nostalgic expanse. He says, "As the design is contemporary, the chosen palette complements everything. Colours like Palsurf, seafoam green, radge blue, mustard, etc are paired with white. Finishes like brick walls, Mediterranean tiles, and louvered windows, introduce patterns to the narrative."



## ICA ITALIAN WOOD FINISHES

*ICA Italian Wood Finishes has an extensive range of Italian wood finishes that deserves special mention. We are specially drawn to Creativa, a special collection of special effects that equips us with the perfect design tools. More than six distinct series within this collection offer us the chance to create umpteen combinations of effects and narratives, while retaining the natural feel and warmth that only wood can introduce to a space.*



## SPACES AND DESIGN

Architect Pooja Bihani is the founder of Spaces and Design. For this 3,000sqft ground floor living space in Kolkata, the brief was to create a down to earth space...a look at the site and meeting with the client revealed they wanted a space with basic materials and a uncomplicated vibe.

## RAW APPEAL

*For the 3,000sqft ground floor of this Kolkata home, Pooja Bihani stuck to a basic material scheme, with a touch of elegance. The clients' love for all things concrete gave birth to all finishes and effects in polished cement and RCC concrete. Since this space was to be used specifically for entertainment, Pooja introduced the warmth of wood finishes to create a balance between cold-warm. From the bar to the flooring, walls and more, this raw scheme has been eulogised.*





## LOOKING UP

YES, YOUR CEILING IS A BLANK CANVAS. IT IS MORE THAN JUST THE ROOF OVER YOUR HEAD...TIME TO UNLEASH YOUR CREATIVITY. SEEN HERE, 42MM ARCHITECTURE CREATES A RIPPLE EFFECT WITH CLEVERLY-PLACED WOOD FINISHES, WHILE BEYOND DESIGNS PROVES THAT BOLD AND DENSE COLOURS IN COMBINATION WITH WOOD PANELING IS A MATCH MADE IN HEAVEN. GET INSPIRED!

# CEILING

PROJECT BY 42MM ARCHITECTURE



PROJECTS BY BEYOND DESIGNS





# FLOORING

## UNDERFOOT MAGIC

WHEN IT COMES TO FLOORING, DURABILITY IS THE KEYWORD. CONSIDERING THE AMOUNT OF TIME WE ARE NOW SPENDING AT HOME, THE FUNCTION IS A TOP PRIORITY. OTTIMO HAS A RANGE OF GEOMETRIC DESIGNS FROM MOMENTI, WHILE TESSERA INDIA BRINGS THE MOSAIC DRAMA OF SICIS TO OUR LIVES. CARPETS CAN CHANGE THINGS INSTANTLY; TAKE YOUR CUE FROM HOUSE OF RUGS.



MOMENTI, AVAILABLE AT OTTIMO

SICIS, AVAILABLE AT TESSERA INDIA

HOUSE OF RUGS



WALL & DECO, AVAILABLE AT SOURCES UNLIMITED

## WALKING BY

THE IN BETWEEN SPACES HAVE IMMENSE POTENTIAL...WE CAN DO SO MUCH WITH THE WALLS, THE CORNERS, THE PASSAGEWAYS, CORRIDORS. HOW WE ADDRESS THESE AREAS, CAN SET THE GREATER TONE FOR THE DECOR SCHEME. FROM VERTICAL GARDENS TO TONE-ON-TONE TREATMENTS, BRAVE MOSAIC PATTERNS TO AVANT-GARDE WALLPAPER PANELS, IT IS TIME TO WAKE UP TO THE POTENTIAL OF THESE SPACE.

VERTICLE GARDEN, STEVIN A PROJECT BY 42MM ARCHITECTURE

CLARKE & CLARKE, AVAILABLE AT MAISHAA

SICIS, AVAILABLE AT TISSERA INDIA





MOMENTI, AVAILABLE AT OTTIMO



CLARKE & CLARKE, AVAILABLE AT MAISHAA



MOLECULAR SERIES, BY ORVI SURFACES



WALL & DECO, AVAILABLE AT SOURCES UNLIMITED

## USUAL SUSPECTS

WOW, THE LIST IS ENDLESS HERE... AND BOY, AS SEEN IN THE PROJECTS FEATURED EARLIER, THERE IS SO MUCH THAT CAN BE DONE. AS SMITHA ZACHARIAH OF ZXP DESIGN SAID EARLIER, SELECT A FAMILY OF COLOURS AND GO CRAZY EXPERIMENTING WITH MOTIFS, PATTERNS, SCALE, AND TEXTURE. IF YOU'D RATHER TAKE THE SUBTLE ROUTE, NEUTRALS SHOULD BE YOUR BEST FRIEND.



# THE ART OF SIMPLIFYING EXTRAVAGANCE

Covering a residential area of 7,400sqft, with an outhouse area of 2,500sqft, MuseLAB blurs the boundaries between indoors and outdoors to create an unbounded experience in this Ludhiana home

FEATURE **AVRI NOEL D'SOUZA**  
PHOTOGRAPHS **SAMEER TAWDE**



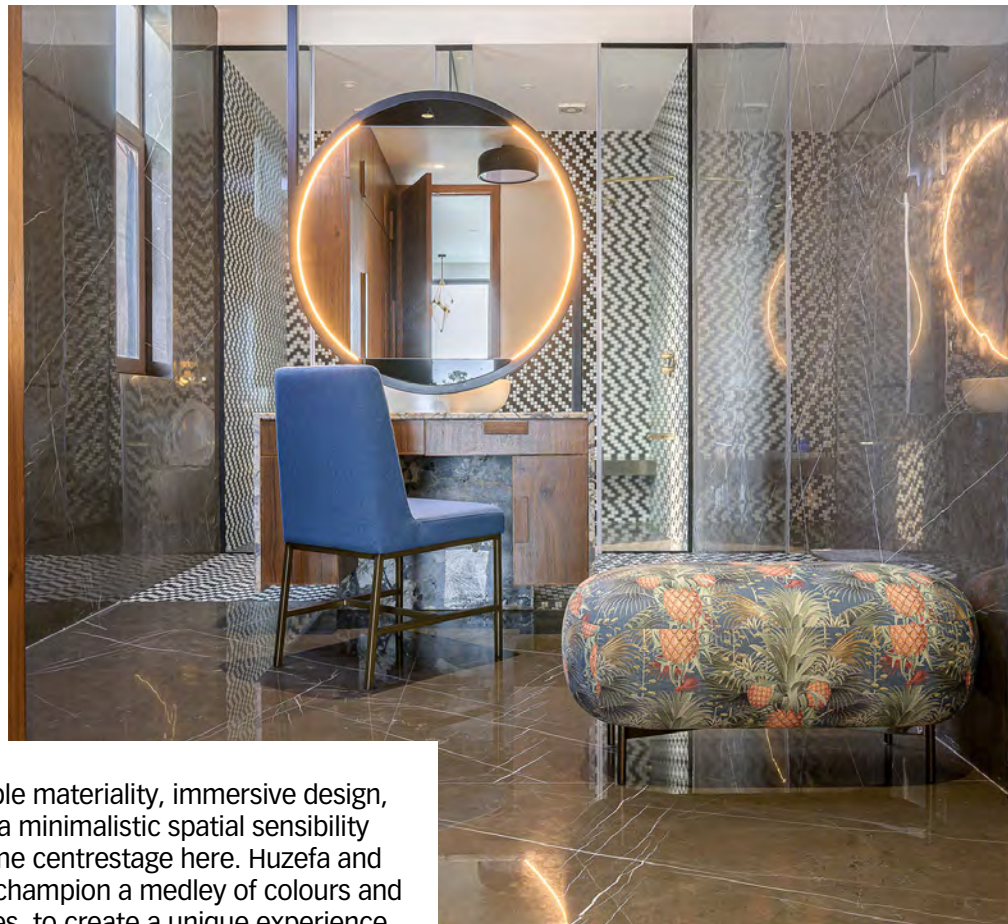


Home to a close-knit joint family, this residence houses three generations. The brief included creating private pockets that each member felt tethered to, while celebrating the one-acre expanse in an evocative style.

— Huzefa Rangwala, Director & Partner, MuseLAB







Tangible materiality, immersive design, and a minimalistic spatial sensibility assume centrestage here. Huzefa and Jasem champion a medley of colours and textures, to create a unique experience.





“

We have worked with a colour palette that is bold and effusive.... Not just bright and vivid colours, but simple, austere tones as well. In the wake of which, gritty textures and glamorous materials elevate the style.

— Jasem Pirani, Director & Partner, MuseLAB



## JASEM PIRANI AND HUZEFA RANGWALA

**Directors and Partners,  
MuseLAB**

In 2005, Jasem Pirani and Huzefa Rangwala met in Savannah while they were pursuing their Masters degree at Savannah College of Art and Design and Georgia Institute of Technology, respectively. The duo connected over food and zany humour. The idea of MuseLAB was conceived on a backpacking trip to Mexico in October 2008. “Our conversations resonated our passion for design. Nine days of creative gestation and MuseLAB was born,” says the duo in unison.

**W**ith a residential space of 7,400sqft and an outhouse that measures a cool 2,500sqft, architects Huzefa Rangwala and Jasem Pirani of MuseLAB have created an address in Ludhiana, Punjab, that takes us on a design discovery as we have never been on before. The surface treatments of this one-acre home celebrate a cocktail of glamorous colours and muted textures, and in some places, applications that create artistic scales one would find in Avant-garde art repositories. The composition of extravagance with restraint is cool and intriguing. Huzefa and Jasem have celebrated the sprawling expanse...be it in the interiors or outdoors, in an unbounded spatial manner. As this home belongs to a multi-generation, joint family, the duo has created pockets that anchor each individual and provide them with respite and retreat, while creating interconnections between home, person, and nature.





# SERENE LUXURY

For this luxurious home in Mumbai, PI Designs explores an interplay of materials, colour and texture

FEATURE **AVRIL NOEL D'SOUZA**  
PHOTOGRAPHS **PHXINDIA | SEBASTIAN ZACHARIA**



This 1,850sqft apartment has five balconies, and each enjoys a stunning sea view. Located high on the 33rd floor, this home is full of light and ventilation. The team at PI Designs introduced brass highlights on every surface to enhance this natural play of light.



## PRIYANKA AND PRIYADARSHAN INDORKAR

**Co-founders, PI Designs**

With a formidable run in the design industry, PI Designs is founded by Priyanka and Priyadarshan Indorkar. The duo thrives on innovation and believes in marrying creativity and technology with keen detailing to create sensitive lifestyles for their clients.

Perched up high on the 33rd floor of a South Mumbai skyscraper, this home is elegant, functional and bold. Priyanka and Priyadarshini Indorkar of PI Designs have crafted an address that is resplendent with the good things. The client wanted their home to have a broody colour scheme. “Keeping in mind the colour palette would be dark we selected white marble flooring to balance the beauty of vertical objects. The thought was to craft a minimalistic design with rich elements,” says Priyanka. This 1,850sqft apartment has five balconies and each has a sea view, so the home is full of light and ventilation. The duo have used this to their advantage. Mirror work and reflective materials, bounce light around this evocatively space. Priyanka agrees and adds, “Every material in this house is married with brass highlights.”





A common wall between the children's bedroom and master bedroom has been converted into partition to create more storage units for the family.



“

OUR INSPIRATION CAME FROM THE SKY. WE WANTED TO CREATE A SPACE WHERE THE COLOUR SCHEME REFLECTED A MONSOON SKY THAT IS A BLUR OF GREYS AND BLUES.

— Priyanka Indorkar, Co-founder, PI Designs





# STEEPED IN DISTINCT STYLE

Arranged in a flow of navy blue, mustard and red brick, this 2,475sqft Pune home designed by Alkove Design is a collection of unique spaces

FEATURE **AVRIL NOEL D'SOUZA** PHOTOGRAPHS **YAMINI KRISHNA**  
STYLE **SHEERCURTAIN BY SURBHI**





“

*The central idea for this home is based on the principles of Taoism: The cosmic balance between opposites as the foundation of all life.*

— **Ninada Kashyap**, Partner, Alkove Design





[Click here  
TO READ MORE](#)


*This home is an intimate fortress of bright open spaces and a convergence of minimalism and bohemian charm. It is inspired by the balance of yin and yang.*

— Komal Mittal, Partner, Alkove Design



## NINADA KASHYAP AND KOMAL MITTAL

### Partners, Alkove Design

Komal Mittal and Ninada Kashyap both studied architecture at BNCA, Pune. Ninada has a master's degree in advanced architecture from IAAC Barcelona and Komal in Project Management from NICMAR, Pune. The duo came together to create Alkove Designs in 2017 and have carved a niche for themselves in Pune as committed and innovative professionals. Their work is distinctive and vivid in nature, and always created in response to the site and the client's requirements.





# MOVING CONTINENTS, FINDING HOME

With this Mumbai home, Vyoma Patwa Motiramani creates a style reminiscent of the client's stay in London with highlights reflective of their Indian heritage

FEATURE **AVRIL NOEL D'SOUZA** PHOTOGRAPHS **KUBER SHAH**



## VYOMA PATWA MOTIRAMANI

**Founder, Design Lab Vyoma**

DLV - Design Lab Vyoma is a Mumbai based, multidisciplinary architectural-interior firm founded by Vyoma Patwa Motiramani. This firm thrives to achieve spaces which besides articulating carefully at micro levels of details, finishing and functionality, also deeply looks at the macro levels of overall site context, condition and its natural surroundings and built form.

This 1,500sqft home is accented with elements from different eras' in response to the homeowners journey from London to India. Located in Mumbai, it is an amalgamation of nostalgic value with legacy details.





Shades of blue and greys have been playfully used in the overall home as a way to infuse a cool London vibe. The cool is balanced with warm hues of melamine polish on moldings, wood and veneer to create rustic highlights. Vyoma pairs the warmth of wood with the cool of exposed concrete for a coherent balance.



**THE FAMILY WANTED THEIR HOME TO HAVE ELEMENTS REMINISCENT OF LONDON WHILE HONOURING THEIR INDIAN HERITAGE. IN RESPONSE, WE CREATED A ETHNIC-VINTAGE NARRATIVE.**

— Vyoma Patwa Motiramani, Founder, Design Lab Vyoma





Click here  
TO READ MORE

Vyoma was tasked with the job of connecting the dots to create a home that married the best of two worlds. She deconstructed their brief by looking at individual elements that the clients could connect with.



“

**PERCHED ON THE 26TH FLOOR, THIS HOME ENJOYS MOUNTAIN VIEWS. THE FULL-SIZED WINDOWS IN EACH ROOM BRING IN AMPLE OF NATURAL LIGHT, BESIDES FURTHER OPENING UP THE VIEW.**

— Vyoma Patwa Motiramani, Founder, Design Lab Vyoma







# IN RESPONSE TO THE NEW WORLD

Almost three months away from completion, architect Ritika Bhasin radically altered the design plan of this home in Sutton Place, New York, to address the post-COVID shift in her client's lifestyle

FEATURE **AVRIL NOEL D'SOUZA** PHOTOGRAPHS **DANIEL WANG**







“

*I wanted the design to be a revelation. This home is a mélange of colours and styles, reflecting my clients, a young Indian-origin family with a distinct design preference.*

— Ritika Bhasin, Founder, Studio Ritika Bhasin Design

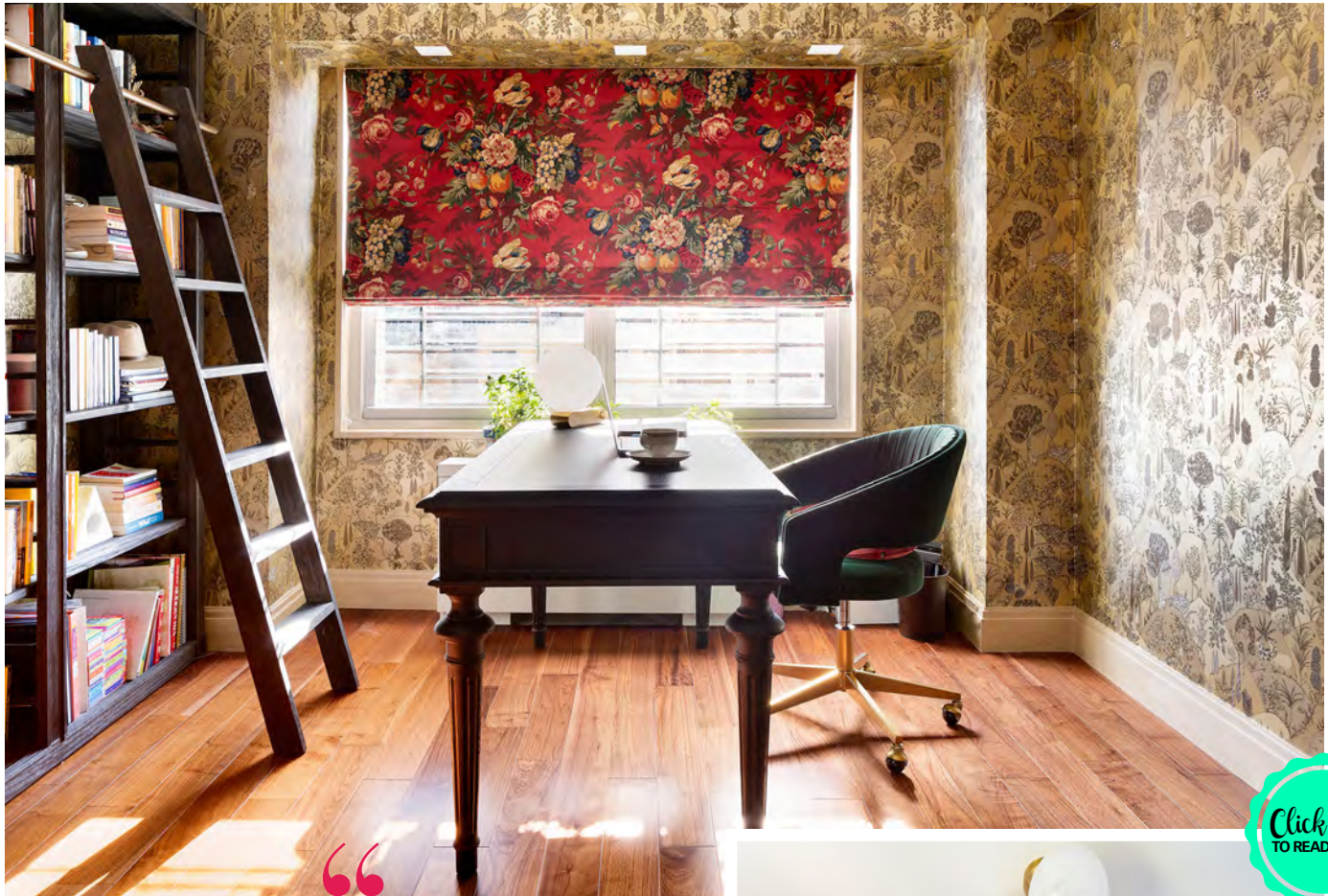


## RITIKA BHASIN

Founder, Studio Ritika Bhasin Design

Ritika Bhasin holds degrees in both architecture and interior design. Upon graduating from Pratt Institute, she worked for Beyer Blinder Belle where she assisted in designing interiors and artwork for Harvard University. Her experience there led to her appreciation for traditional design and vintage furniture which influences her work. Further on, to specialize in residential design she went to work for Amy Lau Design.





Click here  
TO READ MORE

*I always think of hardware and lighting as jewellery. In this project, they have been carefully selected to bring in character and shine to the space just as jewellery would to a well-dressed person.*

— **Ritika Bhasin**, Founder, Studio Ritika Bhasin Design

Ritika Bhasin started the gut renovation of this home in November 2019, it was slated to complete soon, in March 2020. But the pandemic hit, work stalled and things changed. Ritika decided to shift the focus of this project to address her client's new lifestyle. Earlier, the project was driven by style and function, the new plan integrated work capsules into spaces. Ritika says, "Designs were modified to adapt to the work-from-home (WFH) model and homeschooling. We now imagined the dining room would be used more, so while velvet was the initial choice for the dining chair fabric, we swapped that for blue faux leather (it is easier to manage and ties in with the adjacent blue kitchen cabinets. A play table-cum-desk was added in the daughter's bedroom, and a WFH spot was created in my client's bedroom by reupholstering armchairs she owned. A meditation spot was created in the home office, allowing it to double up in function."





# *ELEVATED LIVING*

Bound by views of Bengaluru city, this luxurious weekend home designed by Studio Taan enables its owners to live life, king size

FEATURE **TINA THAKRAR** PHOTOGRAPHS **JUBIN JOHNSON**







“

The whole house has been laid out to create spaces that are warm and layered with spots for restful pauses.

— Neha Sapre, Founder, Studio Taan



NEHA SAPRE

Founder, Studio Taan

Studio Taan is a Bengaluru-based interior design firm set up by Neha Sapre. A firm believer of building value through spaces, Neha approaches her projects with the aim to create something unique and timeless. Her residential and commercial projects are the result of a collaborative effort between clients, her team, consultants and vendors.



On the 29th floor of the Kingfisher Tower in Bengaluru, this 8,000sqft weekend home exudes comfort and splendour. It has everything one could possibly want in their home - comfort, style, functionality and whimsy.





Panoramic views of the city create backdrops for all spaces of the house, both outdoor and indoor. The home is primarily meant for entertaining, so both formal and informal spaces have been chalked out, giving the homeowners a taste of luxurious comfort. Despite its large footprint, it's a cosy home. The heavy pieces of furniture have been balanced out well, and the colours are all muted. If you were to take a walk through the apartment, you'd notice that every single room has either an exquisite piece of wall art or an intricately carved sculpture to complement it. The client's vast collection of art and artefacts dominates this home, and are the only pieces of decor that Neha has used.



[Click here  
TO READ MORE](#)





# AT PEACE, AT HOME

Elements of traditional India infuse this food blogger's family home with bold aesthetics and a strong sense of rootedness

FEATURE **TINA THAKRAR**  
PHOTOGRAPHS **SEBASTIAN ZACHARIAH/PHOTOGRAPHIX INDIA**



## A+A DESIGN STUDIO

**Amrita and Ankit Mehta,**  
Principal Architects

Established in 2006, A+A Design Studio is an architecture and interior design firm that's focused on building not just spaces but experiences for its clientele. Co-founders Amrita and Ankit Mehta approach each project with a completely fresh perspective, putting innovation at the forefront. They have worked on a number of residential, commercial and hospitality projects so far.





Filled to the brim with Indian art and craft, fresh plants and flowers, and a whole lot of soul, A+A Design Studio's latest residential project celebrates India in all its design glory. It's simple and grounded, yet imaginative and lively, with calming colours, an organic material palette and accessories that symbolise the personalities of the homeowners.







“

PEOPLE THINK OF TRADITIONAL INTERIOR DESIGN AS BORING AND PREDICTABLE, BUT IN REALITY, IT CAN BE COOL AND STYLISH. SUCH PROJECTS ALSO GIVE US A CHANCE TO WORK WITH LOCAL ARTISANS AND PROMOTE OUR TRADITION AND HERITAGE.

— **Amrita Mehta**, Principal Architect, A+A Design Studio

The homeowners were looking for a space that they could associate with peace and calm; somewhere that could accommodate their extensive collection of books, their immense love for plants, and their affinity for artifacts with resounding stories and histories. This home is purely an amalgamation of everything that's special to them.

Click here  
TO READ MORE





## SHOPPING GUIDE



### ABCD

**A-Class Marble** [www.aiclassmarble.co.in](http://www.aiclassmarble.co.in)  
**Anemos** [www.anemos.in](http://www.anemos.in)  
**Art Age India** [www.artageindia.com](http://www.artageindia.com)  
**Artychoke** [www.artychoke.co](http://www.artychoke.co)  
**AKFD** [www.akfdstudio.com](http://www.akfdstudio.com)  
**Attirail Shop** [www.attirail.in](http://www.attirail.in)  
\*connect via Instagram @attirail.shop  
**Baaya** [www.baayadesign.com](http://www.baayadesign.com)  
**Baro Design** [www.baro.design](http://www.baro.design)  
**Beyond Designs Home** [www.beyonddesign.in](http://www.beyonddesign.in)  
**Beyond Dreams**  
\*connect via Instagram @beyonddreams.in  
**Beruru** [www.thepurpleturtles.com/collections/beruru](http://www.thepurpleturtles.com/collections/beruru)  
**Bombay Greens** [www.bombaygreens.com](http://www.bombaygreens.com)  
**Cane Boutique** [www.caneboutique.com](http://www.caneboutique.com)  
**Carpet Kingdom** [www.carpetkingdom.in](http://www.carpetkingdom.in)  
**Cultural Concepts**  
\*connect via Instagram @cultural\_concepts  
**Champs Fleur** [www.champsfleur.com](http://www.champsfleur.com)

### EFGH

**EMERY STUDIO**  
[www.instagram.com/emerystudio.in](http://www.instagram.com/emerystudio.in)  
**Esvee Atelier** [www.esveeatelier.com](http://www.esveeatelier.com)  
**Essentia Environments**  
[www.essentiaenvironments.com](http://www.essentiaenvironments.com)  
**Ellementry** [www.ellementry.com](http://www.ellementry.com)  
**Fabindia** [www.fabindia.com](http://www.fabindia.com)  
**Gulmohar Lane** [www.gulmoharlane.com](http://www.gulmoharlane.com)  
**Harshita Jhamtani**  
[www.harshitajhamtani.com](http://www.harshitajhamtani.com)  
**HollyHock** [www.shophollyhock.com](http://www.shophollyhock.com)

### IJKL

**I Heart Homez** [www.ihearthomez.com](http://www.ihearthomez.com)  
**Ikea India** [www.ikea.com/in/en/](http://www.ikea.com/in/en/)  
**India Circus** [www.indiacircus.com](http://www.indiacircus.com)  
**Inhabit** [www.inhabit.in](http://www.inhabit.in)  
**Iqrup + Ritz** [www.iqrupandritz.com](http://www.iqrupandritz.com)  
**Josmo Studio** [www.josmostudio.com](http://www.josmostudio.com)  
**Le Jahaan** \*connect via Instagram @le.jahaan

### MNOP

**Maishaa** [www.maishaa.com](http://www.maishaa.com)  
**MADS Creations** [www.madscreations.in](http://www.madscreations.in)  
**Mangrove Collective**  
[www.mangrovecollective.in](http://www.mangrovecollective.in)  
**Mommy Shots By Amrita**  
[www.mommyshotsbyamrita.com](http://www.mommyshotsbyamrita.com)  
**Nature Weavers**  
\*connect via Instagram @atureweaversofficial  
**Obeetee** [www.obeetee.com](http://www.obeetee.com)  
**Ocre at Home** [www.ochreathome.com](http://www.ochreathome.com)  
**Orange Tree** [www.orangetree.in](http://www.orangetree.in)  
**Parrot and Lily** [www.parrotandlily.com](http://www.parrotandlily.com)  
**Pepperfry** [www.pepperfry.com](http://www.pepperfry.com)  
**Portico** [www.porticoindia.com](http://www.porticoindia.com)  
**Project 810** [www.project810.com](http://www.project810.com)  
**Purple Backyard** [www.purplebackyard.com](http://www.purplebackyard.com)

### QRST

**Sage Living** [www.sageliving.in](http://www.sageliving.in)  
**Sanjyt Singh** [www.sanjytsingh.com](http://www.sanjytsingh.com)  
**Shibui** [www.shopshibui.com](http://www.shopshibui.com)  
**Sources Unlimited**  
[www.sourcesunlimited.co.in](http://www.sourcesunlimited.co.in)  
**Tessera India** [www.tesseractindia.com](http://www.tesseractindia.com)  
**TCG Studio** [www.thecalicoguild.com](http://www.thecalicoguild.com)  
**Thumbimpressions Furniture** \*connect via  
Instagram @thumbimpressionsfurniture  
**Thinkcutieful** [www.thinkcutieful.com](http://www.thinkcutieful.com)  
**The Decorkart** [www.thedecorkart.com](http://www.thedecorkart.com)  
\*connect via Instagram @thedecorkart  
**The Swaddle Cove**  
[www.theswaddlecove.com](http://www.theswaddlecove.com)  
**The Whiteteak Company**  
[www.whiteteak.com](http://www.whiteteak.com)  
**The Wishing Chair** [www.wishingchair.in](http://www.wishingchair.in)

### UVWXYZ

**UDC Homes**  
\*connect via Instagram @udchomes  
**Within** [www.within.net.in](http://www.within.net.in)





**GoodHomes** INDIA