

GoodHomes

INDIA

GOOD DESIGN CHANGES EVERYTHING

A Times of India Publication

VOLUME 14 ISSUE 10 JANUARY 2022

@goodhomesmagazine

@goodhomesmagazineindia

@goodhomesindia

Capturing the Mood of **MODERN INDIA**

Join us as we travel from Goa and
Bhopal to Bengaluru, Pune and
Mumbai to step inside some of the
most beautiful homes in the country

THE ULTIMATE MASTERCLASS ON TABLE SETTINGS

From everyday
ideas to dressy
occasions, we
have you covered

**THE TRUTH
BEHIND
VERY PERI**
A colour that's
taking 2022
by storm

CONTENTS

January 2022



06 SHOPPING

- 06 MOODBOARD
- 08 GET THE LOOK
- 10 HOT RIGHT NOW
- 12 LAUNCH PAD

14 SPECIAL FEATURE

- 14 SERVE IT UP

20 HOMES

- 20 FINDING THE EXTRA IN THE ORDINARY
- 26 FREEDOM OF LIVING
- 34 IN PURSUIT OF HAPPINESS
- 42 A TRANQUIL ABODE
- 48 AN ENGAGING VISUAL NARRATIVE



THE COVER
FEATURE VANITA ARORA

NEXT ISSUE

Made with love, with you in mind. Our February issue is a celebration of everything we heart...homes, styles, colours and people. This month, we also bring you the love stories of India's leading design houses that work and play together. These are the original lovebirds, but with a twist!



Calling all stylists – especially those based in New Delhi and Mumbai. Quick! Send us your resume if you'd like the opportunity to work with us.
Email: goodhomes@wwm.co.in



CEO
DEEPAK LAMBA

EDITOR IN CHIEF
RONITAA ITALIA

Managing Editor Avril Noel D'souza
Associate Editor Neerja Kapadia
Assistant Editor Vanita Arora
Content Producer Avni Raut
Senior Editorial Coordinator Harshal Wesavkar
Deputy Art Director Shalaka Shinde
Senior Graphic Designer Anushree Kumar

Chief Financial Officer Subramaniam S.
Head Human Resources Meghna Puthawala
Printer & Publisher Sunil Wuthoo
Content Studio Vidyut Patra
Head Marketing & Digital Solutions Priyadarshi Banerjee
Marketing Manager Chandni Chopra

SALES HEAD
SUNITA QUADROS

BRAND SOLUTIONS

WEST MUMBAI
Vice President
- Brand Solutions & Business Head
- Femina Salon & Spa
Gautam Chopra
gautam.chopra@wwm.co.in

PUNE
Aditi Shrivastava
aditi.shrivastava@wwm.co.in

NORTH
Vice President & Sales Head
- Long Format Content
Anjali Rathor
anjali.rathor@wwm.co.in

EAST
Assistant Vice President
Alka Kakar
alka.kakar@wwm.co.in

SUBSCRIPTIONS

Asha Kulkarni, Manager Marketing
asha.kulkarni@wwm.co.in

Senior Manager, Subscription
Sakshi Kate, sakshi.kate@timesgroup.com
Editorial Enquiries goodhomes@wwm.co.in

FOR SUBSCRIPTIONS

Online: mags.timesgroup.com
SMS: GHSUB 58888
Mail: subscriptions.wwm@wwm.co.in
Call: 18001210005
(All India toll free number)

GoodHomes takes no responsibility for unsolicited photographs or material. All photographs, unless otherwise indicated, are used for illustrative purposes only.

For marketing queries, e-mail goodhomes@wwm.co.in. For editorial queries, e-mail goodhomes@wwm.co.in

Printed and published by Sunil Wuthoo on behalf of owners Worldwide Media Pvt Ltd, The Times of India Building, Dr DN Road, Fort, Mumbai 400001, and printed at Rajhans Enterprises, No 134, 4th Main Road, Industrial Town, Rajajinagar, Bengaluru 560044, and published at Worldwide Media Pvt Ltd, The Times of India Building, Dr DN Road, Fort, Mumbai 400001 Processed at Colour Processing, The Times of India Suburban Press, Kandivali, Mumbai 400101

All rights reserved worldwide. Reproducing in any manner without prior written permission prohibited

CIN: U22120MH2003142239



PHOTOGRAPH ABHEER DHANU

WRITE TO ME goodhomes@wmm.co.in
SUBSCRIBE mags.timesgroup.com/good-homes.html
FOLLOW US ON:
INSTAGRAM @goodhomesmagazine
FACEBOOK @goodhomesmagazineindia
TWITTER @goodhomesindia
LOG ON NOW www.goodhomes.co.in

Have you ever started reading a book and found yourself totally immersed in the tableaux of the author's descriptive making? Yes, that happens to me quite often. The interesting thing is that the latter's words end up painting a picture of my imagining.

Spaces have a similar effect on me – in a slightly different context. They paint a beautiful picture of the inhabitants' world and life. The choices they make, their colour and style preferences, their cooking and eating habits, their personalities and everything else in between. This is where I must confess, I love reading spaces as much as I thrive on reading books.

The last couple of years, albeit trying on most fronts, have done some wonderful things for homes across the world. Private spaces have enjoyed more attention (and use) from their owners and tenants, without exception. In the last few months itself, I've been fortunate enough to see some of the most beautifully eloquent spatial stories.

I know it would be too simplistic to say that the pandemic has rendered our home-lives so much richer and more colourful than they've ever been before. But it's the truth. I believe there's been too much attention already being given to the unpleasant. Where all our homes are concerned, I'd like to keep looking on the brighter side, and with the turn of the calendar year, I'd like to take this opportunity to raise a toast to all the spaces that have made us feel at home!

Cheers to that, and all of you!

A handwritten signature in black ink, reading 'Ronitaa Italia'.

RONITAA ITALIA
Editor in Chief

INDIA'S FIRST CURATED LUXURY LIVING SHOW IS COMING TO BANGALORE!

TEJAS

AUTOMATION | LIGHTING | HOME CINEMA

PRESENTS

D/code

A Times Group Initiative

CURATED BY

Shernavaz
Bharucha

SOUTH EDITION 2022

HOME & DESIGN

TRENDS

TO PARTICIPATE, COLLABORATE AND KNOW MORE,
WRITE TO US AT DCODE@WWM.CO.IN
FOLLOW US @ [@_DCODE](https://www.instagram.com/_dcode)





TERRACOTTAKAT



ELLEMENTRY



CHITRINI

TIMELESS TERRACOTTA

Traditional yet modern,
presenting products
made with earth

FEATURE **VANITA ARORA**



BAGECHAWALA



ANMOL CREATIONS

Shopping Guide on Pg 52

MEET THE JURY

TRENDS EXCELLENCE AWARDS 2021 - DECADE SPECIAL



NEESHA ALWANI
RAHUL KADRI
ROOSHAD SHROFF
SHRUTI JALAN
ZUBIN MASTER

STAY TUNED

Instagram @trendsmagind

Facebook @trendideas

Twitter @TRENDSMagIndia

Website www.trendsawards.in

TEJAS

AUTOMATION | LIGHTING | HOME CINEMA

PRESENTS

TRENDS

EXCELLENCE
AWARDS 2021

FOR ARCHITECTURE & DESIGN

DECADE SPECIAL



INHABIT

1
Rug,
Ghar Ghar

5
Tribal Cushions,
Ghar Ghar

Vintage Treasures

Reverting to the good old days where design was straightforward and pure

FEATURE **VANITA ARORA**



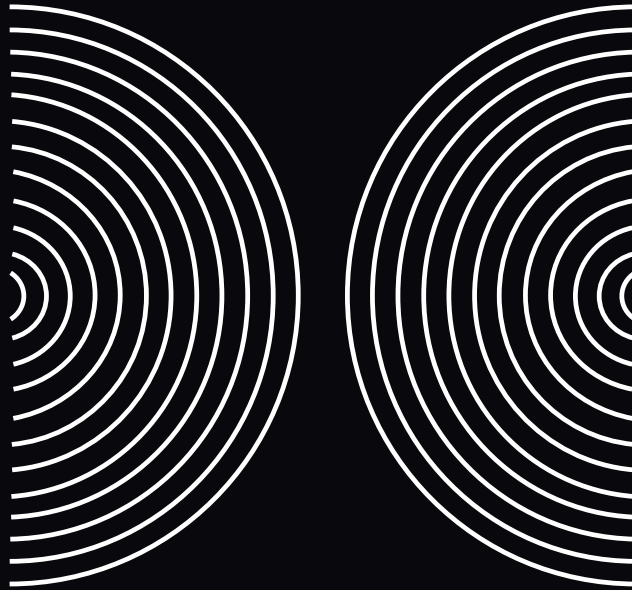
3
Sofa,
Inhabit.

4
Ice Bucket,
Ellementry

2
Chest of Drawers,
Inhabit

ANNOUNCING

THE ECONOMIC TIMES



DESIGN
COUNCIL

THE AID THINK TANK

Brought to you by



An Economic Times Initiative

Powered by

HOME & DESIGN
TRENDS
GoodHomes INDIA

@trendsmagind
@trendideas
@TRENDSMagIndia

@goodhomesmagazine
@goodhomesmagazineindia
@goodhomesindia
www.goodhomes.co.in

HOT RIGHT NOW



BACK TO BOOKS

Create your library with
a touch of whimsy

FEATURE **VANITA ARORA**



1. Bookcase*, Giorgetti available at **Sources Unlimited**
2 Bookcase*, Ashley Furniture Homestore available at **Dash Square 3** Bookcase*, Magari available at **The House of Things**
4 Bookshelf*, Sici's available at **Tessera India** 5 Bookcase*, Baxter available at **Sources Unlimited**. *Prices on Request

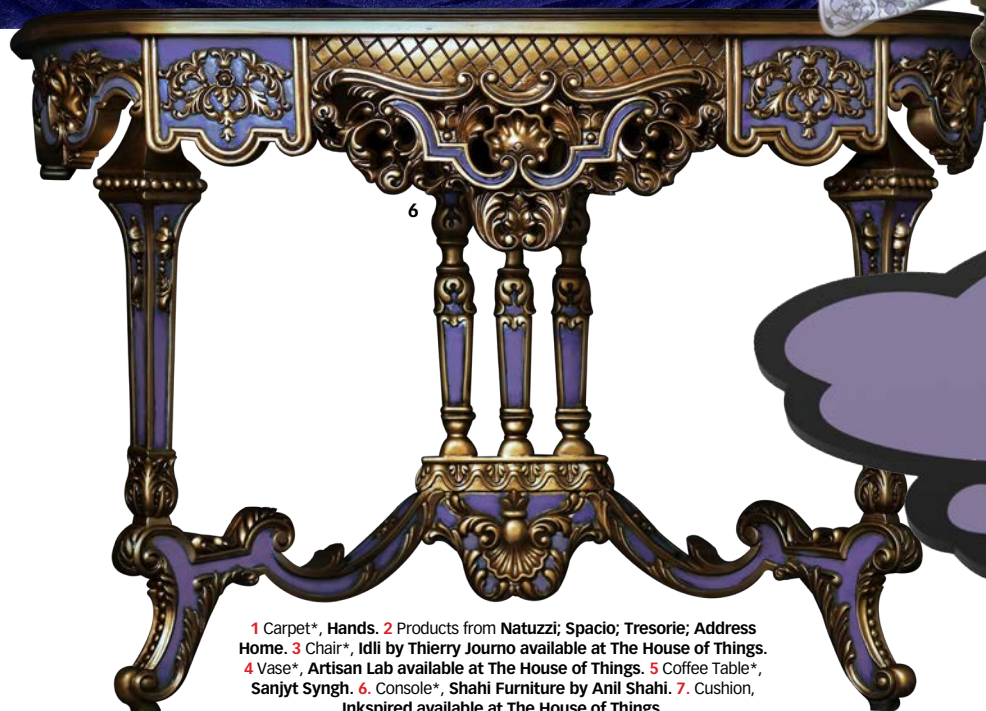
Shopping Guide on Pg 52

1 2

VERY PERI

Touted as the colour of the year for good reason, bring home this cool hue

FEATURE **VANITA ARORA**



1 Carpet*, Hands. 2 Products from Natuzzi; Spacio; Tresorie; Address Home. 3 Chair*, Idli by Thierry Journo available at The House of Things. 4 Vase*, Artisan Lab available at The House of Things. 5 Coffee Table*, Sanjyt Singh. 6 Console*, Shahi Furniture by Anil Shahi. 7. Cushion, Inkspired available at The House of Things.

Shopping Guide on Pg 52



MAKE A STATEMENT

The perfect modern-day chair does exist. Just head to Coppice Furniture on MG Road, New Delhi, and come face to face with Memphis. Artistic, vibrant and actually very comfy, this design is everything your contemporary home needs.



MARKET UPDATE

Launch Pad

New launches, everything hot, whatever's not.... We tell you first!

FEATURE **AVRIL NOEL D'SOUZA**



Inspiring Underfoot Style

Drawing inspiration from the ornamental traditions of the ancient Ottoman empire, combined with the free spirit of the gypsy soul, the latest collection of rugs by Obeetee is inspiring to say the least.



Ochre at Home, a Kolkata-based design company, brings to our Indian shore the genius works by Jean Boggio. Loving these accessories!



Let's talk art for a second!

Educationist and artist, Shalu Juneja has collaborated with Canvas 360 in Ahmedabad to showcase her art under the title, 'Design of Displacement' from 4th January 2022 onwards. We highly recommend a visit to this evocative show.





DESIGNED WITH CARE

In a world that has finally woken up to the severity of the climate crisis, sustainable design is the way forward. Orange Tree brings our way a stunning range of lighting and furniture that respectfully approaches the topic. The result is a promise to craft designs that are thoughtful and stylish.



Delicious and Stunning!
Mumbai folks rejoice, Donna Deli is the first of its kind, casual dining and bar which not only has a great outdoor area but also specialises in Asian and Italian. A treat for the senses, indeed!

A One-Stop Shop

With an emphasis on user-friendly designs, Fabindia now goes a step further to bring our way designs that are detail-oriented. Mandala, Noah, and Flute, are the latest furniture collections from this trusted brand.



Proud like the Peacock

We recently spotted the IL Pavone Throne at the Expo 2020 Dubai and it is every bit as majestic as you might think it looks...if not better. From the cascading frame and the spectacular colours, this throne is indeed fit for royalty and will find pride of place in your home.

SERVE IT UP

Celebrate the season, draw inspiration and create a statement table setting to wow your guests

FEATURE VANITA ARORA

SERENA VILLA ALICATA

Visual Artist

INSPIRATION: I derive my inspiration from observing a flower, a dish or a fruit, and then I create my mise en place, guided by my instinct.

THE LOOK: January is a cold month here in Italy, so the tablecloth I used is pure white, like snow. I have tried to bring in the feel of spring through the centerpieces, decoration and floral napkins. From Richard Ginori, Bitossi to Seletti - the entire table is laid out with dishes from different brands. The other table is set with a light blue tablecloth and has Bitossi table dishes and as decoration, there is a typical piece of our religious tradition called "L'acquasantiera" which is a container for the holy water, in which there are small carnations as decoration.



PHOTOGRAPHS BERTRANDO DI RENZO

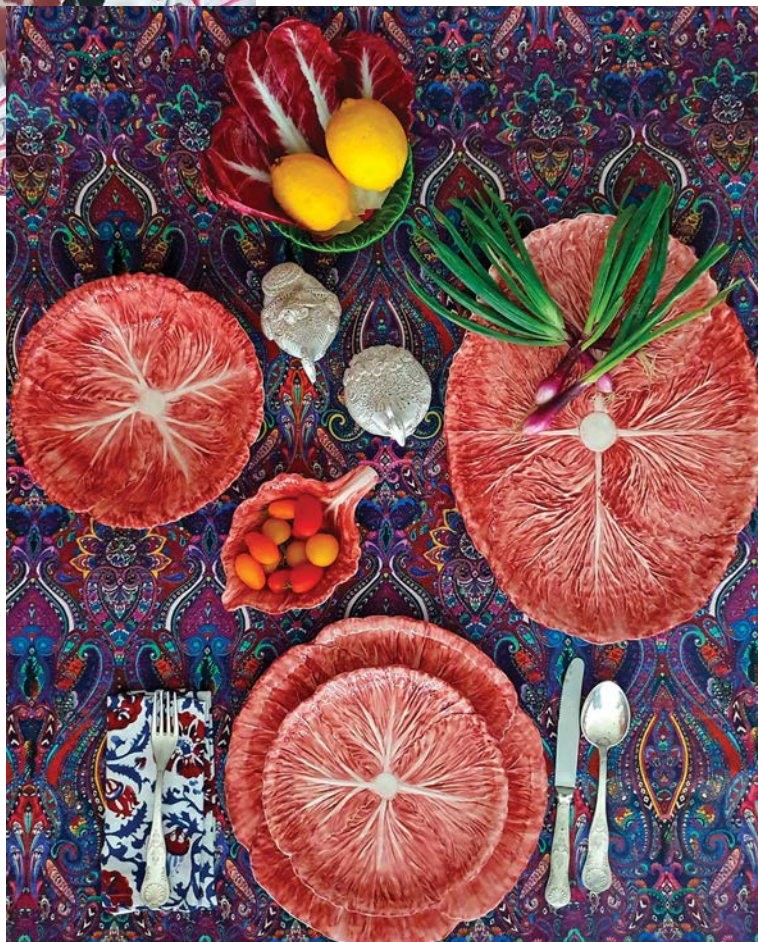


BERTRANDO DI RENZO

Designer & Owner, Les-Ottomans

INSPIRATION: My travels, books and my daily life always inspire me. When I started Les-Ottomans, the inspiration was Istanbul - a city full of life and history; a cornucopia of endless pleasures for people, like me, who love beauty. Ikat, even though is not Turkish, I still discovered them in Turkey and it remains my inspiration and a huge part of my collection.

THE LOOK: Les-Ottomans is an expression of my colourful world. I love to mix colours, patterns and materials. A table for me is like a playground where everything can happen. Here, I have used the Ikat collection - ceramic plates handmade in Italy, the Radicchio collection - ceramic plates hand-painted in Italy, and a block-printed tablecloth made in India. The palm tree candle holder is also handmade and hand-painted in Italy





ANUJA GUPTA

Co-Founder & Design Creative Director, Apartment 9

INSPIRATION: *Traditional tablescape for a coastal dinner inspired me to create the look.*

THE LOOK: *I have used mogra, kaner, simple playful craft items, and brass crockery to create a traditional setting. I strongly feel that it makes a lot of difference when you give a personalised touch to a sit-down dinner and make your guests feel special at all times. Themed name tags for each guest can create that impact and also add visual interest to the table. For the traditional essence, I have also used dry spices and small local elements to make the set-up more conversational.*





PHOTOGRAPHS HABIB PHOTOGRAPHY



RITU KOCHHAR

Founder & Creative Head, The Bgv Botanist

INSPIRATION: The inspiration behind the look was sustainability. Festivals and special occasions often bring flowers to the table and while they are pretty, they eventually end up being thrown out. So, we incorporated plants that can be kept for a long time even after the party is over.

THE LOOK: A vintage English themed floral tea set was central to the look. Based on the theme, we placed white, boat-shaped ceramic bowls in which we created succulent gardens with unusual mauve coloured Echeveria succulents. For the blue napkins, we used jute to make napkin rings and complemented them with delicate Baby's Breath flowers. For a floral touch, we used pink-tipped roses along with Brassica flowers in a lovely translucent glass vase with a bunch of Baby's Breath flowers.



PHOTOGRAPHS NAMRATA DATT



NAMRATA DATT

Creative Head, Maison.15

INSPIRATION: It's a wabi-sabi, Christmas and winter-inspired look. Winters are dry, nature is devoid of green colour and it is more monotone, leaning towards brown. The idea is to enjoy nature's imperfections as well.

THE LOOK: For the winter-inspired look I have used a silver tray, baskets from a local craft store in Sitla, silver candle stands from London, and the linen is from Maison.15. Colours are all monochromatic - white, browns, black and tan. It is a classic colour theme that never goes wrong.





LÉA ZANA

Designer, Vaisselle

INSPIRATION: *A joyful gathering with friends is what inspired me to create this table setting. I love entertaining and having fun with my tablescapes. I also like mixing colours and mixing-and-matching plates. It creates that special element for each guest and makes them feel unique as they have their own set of plates.*

THE LOOK: *The coloured Gingham linens are family heirlooms and are inspired by my grandmother's table cloth from the south of France. The glassware I have used is from antique crystals found in charity shops. The other elements used are egg cups, egg plates, polka dot ceramics, and stripe plates from Vaisselle – all handmade in Spain. To complete the look and decorate the table, I have placed fruits and flowers as I feel they bring life to any setting and they also look aesthetic.*



FINDING THE EXTRA IN THE ORDINARY

As staunch as his quest is to create Avant Garde spaces, architect Veeram Shah proves he doesn't lose sight of crafting homes with warmth. His inspiration for this Pune residence was the owner's requirement for a home that evolves with and nurtures the needs of their 20-month-old son

FEATURE **AVRIL NOEL D'SOUZA** PHOTOGRAPHS **DHRUPAD SHUKLA**

For architect Veeram Shah the most exciting part about taking up this 2,000sqft residential project in Bane, Pune, was returning to the city he studied in, after almost seven years. Melancholy aside, this project also presented him with the opportunity to craft a space, which in keeping with his design demeanour, was ahead of its time and distinctive, yet rooted in the homeowner's endearing requirement for a home built to encourage, nurture and meet the growing needs of their 20-month-old son.

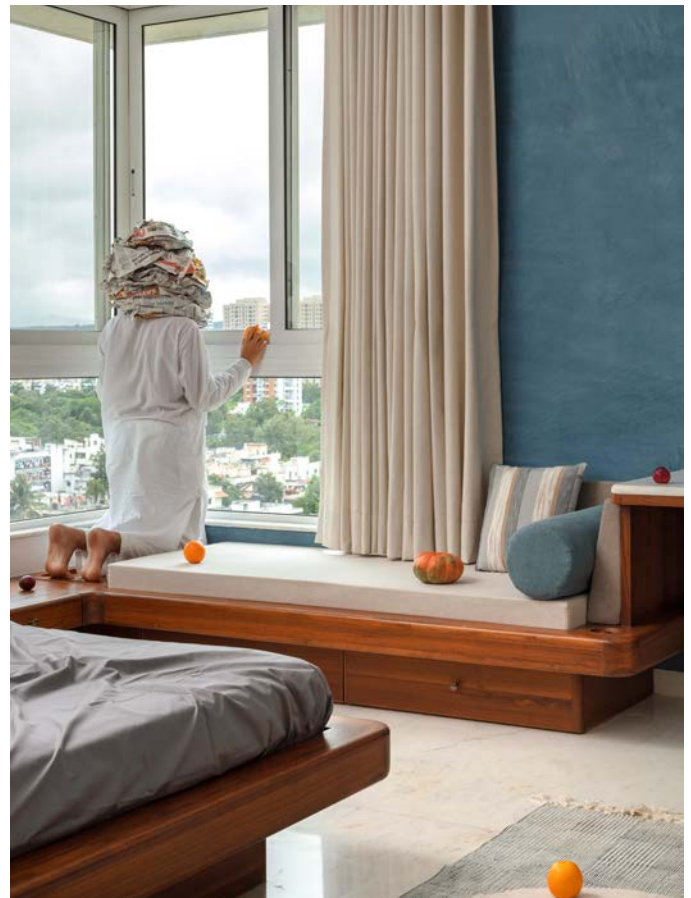




“

We tried to reinvent the generic manner in which age-old materials commonly get used in modern Indian homes. We used wood, brass, cane, lime plaster, concrete, stone, and fluted glass based on their earthiness and imperfectly perfect attributes.

— **Veeram Shah**, Architect, Designer and Founder, Design Ni Dukaan





Talking about the materiality of this house, Veeram says, "Simplicity, modesty and roughness are aspects incorporated in the choice of materials and textures. There lies a quiet beauty of unpretentiousness in our selection that does not assert its presence through striking design or bright colours." Veeram's underlying belief of 'design to the point, design without excess' is profound, given that this home is crafted with an Avant-Garde soul.



VEERAM SHAH

Founder, Design Ni Dukaan

Veeram Shah founded Design Ni Dukaan with a human-centric approach to design. While the architect is known to manifest fantastical narratives either through the spaces he crafts or the pieces of furniture he designs or even the fashion adornments he conceptualises, he remains rooted in his belief and vision to "create objects that are the face of modern India." He shirks away from emulating or borrowing inspiration, instead, he stays true to his unique calibre of design and his experimental manner of exploring this world through design.

“

We have attempted to create a very original language that resonates throughout the whole house yet varies in small nuances as you move around to create a clear identity for each space.

— **Veeram Shah**, Architect, Designer and Founder, Design Ni Dukaan



“

While this home is modern, we designed it in a way that it exudes a familiar soul. I have always wanted to reinvent how we perceive design while remaining rooted in the use of simple, staple materials. Instead of imitating what is done in the West or trying to emulate it, I want to create objects that are the face of modern India.

— **Veeram Shah**, Architect, Designer and Founder, Design Ni Dukaan

Architect Veeram Shah, Founder, Design Ni Dukaan, doesn't do normal. He has established this truth with his brave arsenal of work that challenges spatial plans to create convoluted yet highly functional and remarkable designs. From furniture and jewellery to spaces and homes...Veeram is wired differently. For this project, we bring you his words with as little meddling in the prose as possible. Starting with the brief he says, "In the client's words, 'This house will play a major contribution to my 20-month-old son's growing up.' The humble genuineness of this parental concern attracted us to this 2,000sqft home for a family of three in Bane, Pune. There was a myriad of other requirements laid out by the client. However, as we progressed, we kept coming back to the "common man's" endearing, rational concern for his child and chose to manifest it in the choice of our concept, space planning, materiality, as well as the photoshoot."

Giving us an insight into how he and his team came about with a design plan that might be fantastical but remains highly relatable, Veeram reveals that everything came about as a result of the conversations with the clients. Through the course of lengthy discussions Veeram internalised the family's requirements, he better studied their lifestyle and summarised his observations to one word, 'Shibusu'. "We chose this as the premise for the playful curation of spaces. 'Shibusu' refers to simple, subtle, and unobtrusive beauty in affinity with Japanese aesthetics and ideal human behaviour. We wanted to design a home with simple, honest materials and textures and cater to the family's efficient and functional lifestyle."

As a result of the observations made and the end vision for the course of design, this home celebrates an absence of walls in the common areas. Veeram did away with the traditional need for partitions and demarcations in order to create a wholesome and visually-connected space. The idea was to encourage the homeowners to interact with the surroundings based on their need and not the designated use of the room.

Based on the family's requirements, Veeram crafts a bespoke concept that addresses every need. The kitchen allows for cooking and serves as a quick dining nook, while the dining multifunctions as an eating and a working space. Lounging is not limited to the living room but also extends to the bedrooms for a more intimate, relaxed moment. **EN**



FREEDOM OF LIVING

Inspired by the gregarious nature of an untamed tropics, Kavya Sheth of Studio Ruh brings that unbridled energy and calm to this modern and evocative home in the City of Gardens

FEATURE **AVRIL NOEL D'SOUZA** PHOTOGRAPHS **ISHITA SITWALA**



Kavya Sheth and her design team, Aprajita Basnet and Priyanka Singh, along with Shruthy Sanghvi, the Project Design Collaborator, have transformed this 3,800sqft home, from a blank canvas into a stylish, Avant-garde, and artisanal home. The designers have married Italian pieces of furniture with Indian artisanal designs, to pen a new style in Indian design.



KAVYA SHETH AND SHRUTHY SANGHVI

Founder, Studio Ruh

Young, enthusiastic and talented, designer Kavya Sheth is the Founder and Creative Director of Studio Ruh, an emerging talent house based in Bengaluru. Her firm specialises in high-end yet rooted, residential projects. Kavya is keen to curate a new lexicon in the design world and isn't afraid to traverse on paths unknown. Her designs are highly sensorial, and each is more dynamic than the last...we are keen observers on where next the road will take her. Shruthy Sanghvi is the Project Design Collaborator on this residential project.



Materials and textures come together to create a high octave yet delicate narrative. Kavya and team have handpicked marbles and veneers to introduce depth and contrasts that would otherwise be difficult to achieve with just a vanilla approach to pairing. The home is punctuated with pieces of furniture sourced from Italy.

“

THIS HOME CERTAINLY HOLDS
A SPECIAL PLACE IN OUR
HEARTS. ITS STYLE, FLAVOUR
AND MINDFUL DESIGN
RESONATES WITH WHO I AM,
AND REFLECTS A HOME I
WOULD LOVE TO CALL MINE!

— **Kavya Sheth**, *Founder & Creative Director, Studio Ruh*



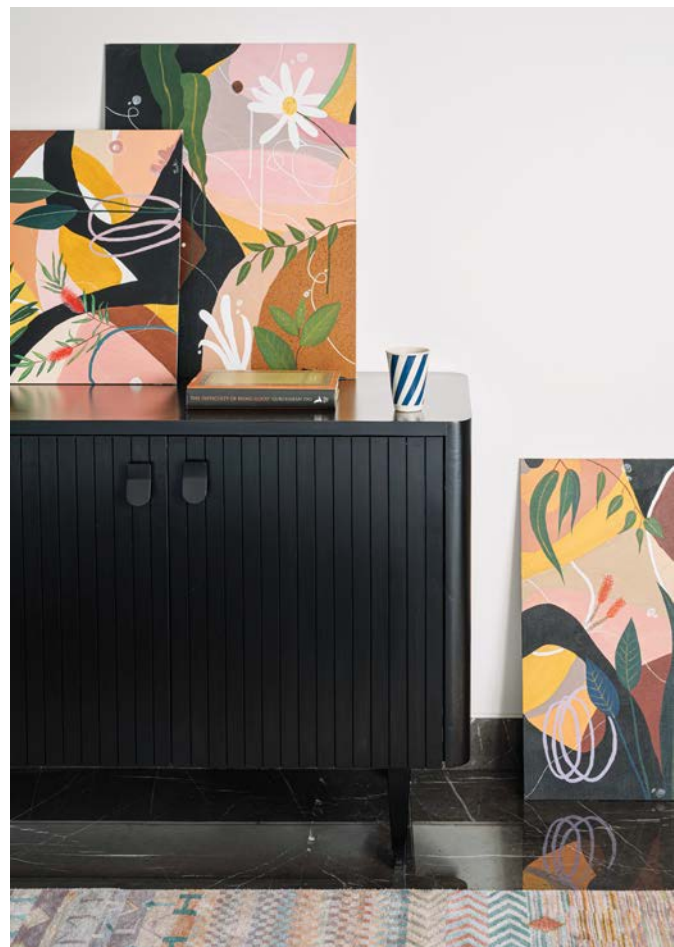
Kavya and her design team Aprajita and Priyanka, along with Shruthy, worked together on this residence. Their focus was on punctuating soul in every aspect of design. And to do that they have created sensorial pockets of restfulness. Yes, the living areas and common passages are soothing and at the same time, vibrant, but its the bedrooms that we are pulled to. They are the picture of calm and peace, and we love the layering of delicate colours with structural light fixtures and more.







Vintage and ethnic pieces and surface treatments are paired with luxe designs, flush finishes, and sophisticated functional solutions. Colour is the connecting factor between all the common areas of this home. A classic, black-and-white, patterned marble floor finds a great companion in the form of a crimson-bodied solid wood console. The ivory wainscoted walls here, introduce an element of richness to the space. The custom doors allow a deep navy stain to wash over the open-grain veneer. Kavya called upon lighting designer, Harshita Shetty, of Light Inspired Thinking, to curate the spectacular light flow, and reverted to Prachi Kothari, the homeowner, to curate the astute collection of art this home boasts of.





THE FREE-FLOWING LAYOUT OF THIS HOME HAS DETAILS THAT ARE DOVETAILED BY A STATED LUXE CHARACTER. AESTHETICS ASIDE, FUNCTIONALITY ASSUMES PARAMOUNT IMPORTANCE.

— **Kavya Sheth**, *Founder and Creative Director, Studio Ruh* & **Shruthy Sanghvi**, *Project Design Collaborator*



When Kavya Sheth, Founder and Creative Director, Studio Ruh, was first

approached to design this 3,800sqft home she was struck by the immense potential the blank canvas had to offer. On JP Nagar, Bengaluru, this home is expansive and Kavya immediately imagined what she could and would love to do with its bare bones. The client's brief was open-ended, and this worked to her advantage. "All they wanted was a home that was modern and accentuated with details and context, while exuding a warm vibe," says the designer.

Enthused by this free-hand, Kavya set about crafting one of her most ambitious projects to date...we say this because she later reveals that the aesthetics, functional aspects and effortless flow of this home, personally appeal to her, "...and this is exactly what I would want from my home." In response to creating something timeless yet vibrant, she opted for a tropical-inspired narrative. From the way the internal-external boundaries blur to create an expanse, or how sensorial the energy here is, down to the effusively-au naturel surface treatments, this home could be anywhere in the world.


Because of the similarities in design preferences, Kavya experienced a personal design discovery and she explored a lexicon intrinsic to the person she is. This home reflects a fearless approach to experimentation with form, materials and texture. A melange of complementary and dynamic inclusions, create explosive vignettes. We find this balance of new and old, style and function, very refreshing. It's a dream come true, this home. **EH**

IN PURSUIT OF HAPPINESS

By arranging the living spaces of this Bhopal home around verdant and vibrant interior pockets, designer Priti Tatiya blurs the thresholds between indoor and outdoor living

FEATURE **AVRIL NOEL D'SOUZA** PHOTOGRAPHS **PIXCEL CRAFT**





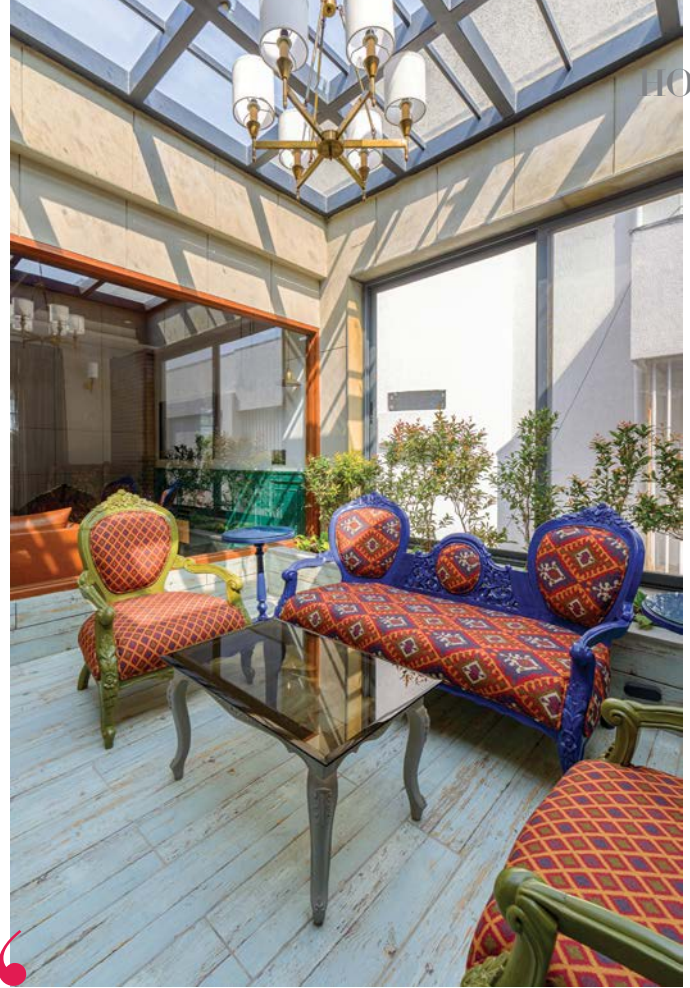
The location of this bungalow in Bhopal wasn't anything special. Designer Priti Tatiya, Founder, PTA, had to create inspiring pockets within the interiors to create a memorable address. To craft an expanse that ensures a constant dialogue between nature and the interiors, she planned green pockets everywhere. From the living spaces and balconies to the private alcoves, and more. This home exudes a very earthy and youthful vibe because of this execution.



We wanted to create a neutral background which would easily lend itself to a vibrant narrative. To achieve this, we played with a diverse palette of materials, colours, textures and finishes. Stone in various finishes is mixed with different grains and shades of wood, while exposed concrete finishes complete the look.

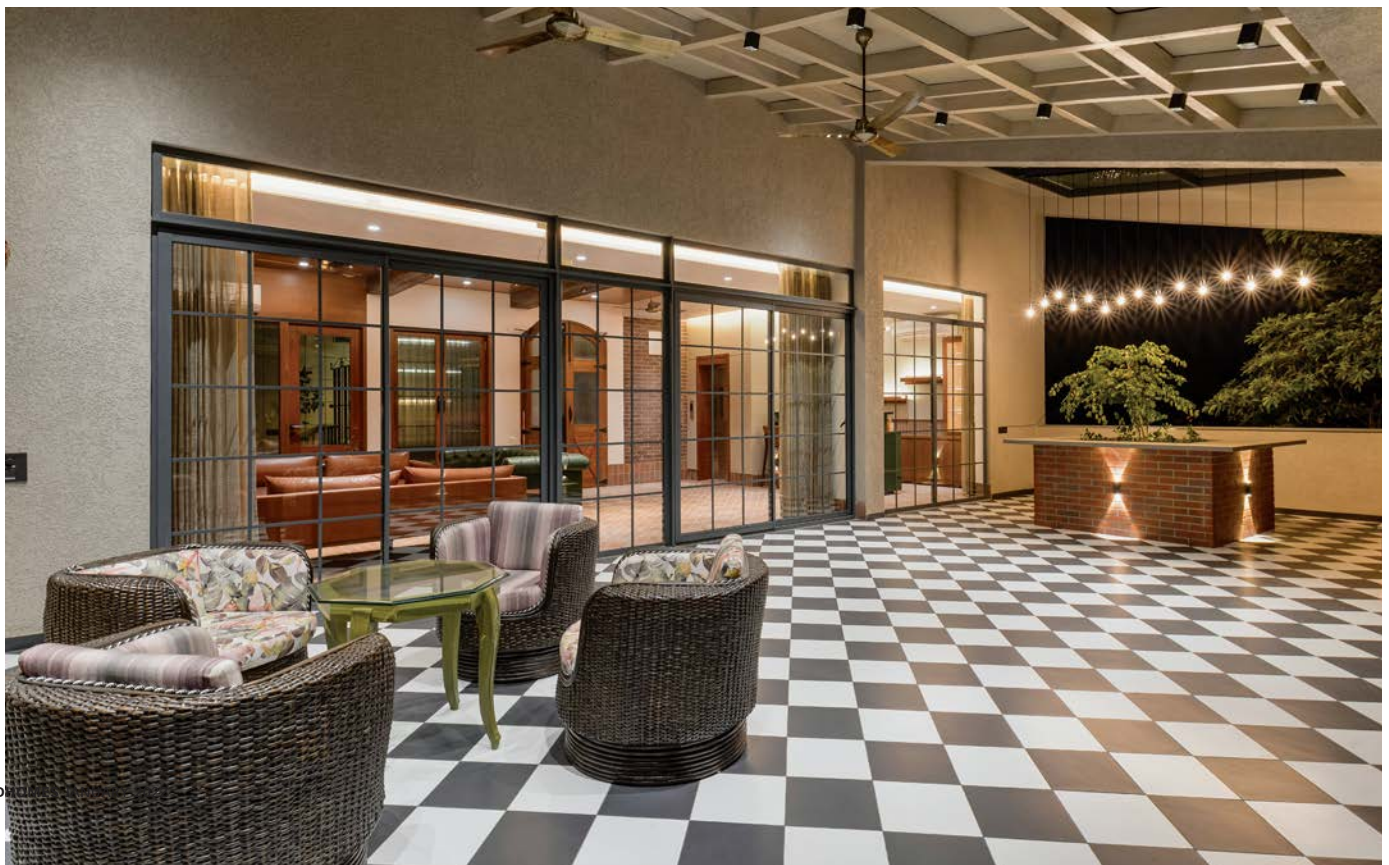
— Priti Tatiya, Designer and Founder, PTA Designs





The location is a typical bungalow society in Bhopal. In the absence of something inspiring outside, we had to create whimsical and larger-than-life scenes inside. We did this by creating green pockets everywhere, thus imparting an earthy vibe.

— Priti Tatiya, Designer and Founder, PTA Designs





“
We have celebrated natural materials. River-washed grey slate stone with inserted brass strips for the floor; brick flooring in the recreational spaces like the bar; exposed concrete finish, random rubble masonry effect in the stone cladding and wood in different stains.

— **Priti Tatiya**, Designer and Founder, PTA Designs



Priti reveals this home to be one of the most vibrant projects she's worked on. The fact that she had to create an eco-system inside this bungalow that in no way reflects the bungalow's surroundings neither does it derive its inspiration from a single prominent source, allowed the designer to really flex her chops as a creative mind and craft a home that stands out, no matter which space you find yourself in. The designer dips into a vibrant colour scheme to drench the interiors with soul-shaking hues, while hushed and neutral tones soothe.



PRITI TATIYA

Designer and Founder, PTA Designs

We are fans of Priti Tatiya's approach to design. Every project that the founder and principal designer of the Bhopal-based design firm PTA Designs undertakes, beautifully encapsulates the holy trinity that makes up great design – warm, eclectic and dramatic. But she doesn't just stop there...she always goes a step further and brings to the canvas crafts and art synonymous with India, and for us that's the finishing touch. In this open-plan bungalow, we observe these attributes and then some more.





The vision was to transform multi-partitioned spaces with compromised rooms into a home with great expanse. We achieved this by opening the plan and providing views into other spaces, thereby allowing the full width and length of the house to be experienced.”

— Priti Tatiya, Designer and Founder, PTA Designs

Set on a 5,000sqft plot of land, this bungalow with a built-up area of 7,500sqft in Bhopal is a lesson on the wonders of eclectic design and the affinities between a modern India design narrative and the modern-day bohemian style movement. Priti Tatiya is something of a creative genius when it comes to striking these astonishing melds where design, style and function easily coexist. This, her latest residential project thrives on experimenting and curating an eco-system that is inspired by none but inspires us all!

“The plot is north-facing and is in a standard bungalow society. It doesn’t have any interesting surroundings. Add to this, it shares one of its boundaries with a garden restaurant, so the site has a mixed atmosphere surrounding itself. In the absence of something inspiring outside, we faced the challenge to create a whimsical and larger-than-life interior. We did this by creating green pockets everywhere, and playing with a medley of materials, textures, colours and finishes...thus creating an earthy and vibrant vibe.”

There is an unbridled sense of ecstatic freedom as we move around the expanse of this three-storey bungalow. Priti cleverly crafts a layered environment that looks both inward and outward. To add soul, she punctuates the home with organic elements in the form of tactile finishes and natural materials. She has celebrated a rich application of natural materials in every possible scenario. River-washed grey slate stone, with inserted brass strips, is used on the floor, while brick flooring is used in recreational spaces like the bar. To this heady mix, she further adds exposed concrete finish, random rubble masonry effect in the stone cladding, and wood in different stains. Priti adds, “We wanted to create a neutral background which would easily lend itself to a vibrant narrative. To achieve this, we played with a diverse palette of materials, colours, textures and finishes. Stone in various finishes is mixed with different grains and shades of wood, while exposed concrete finishes complete the look.”

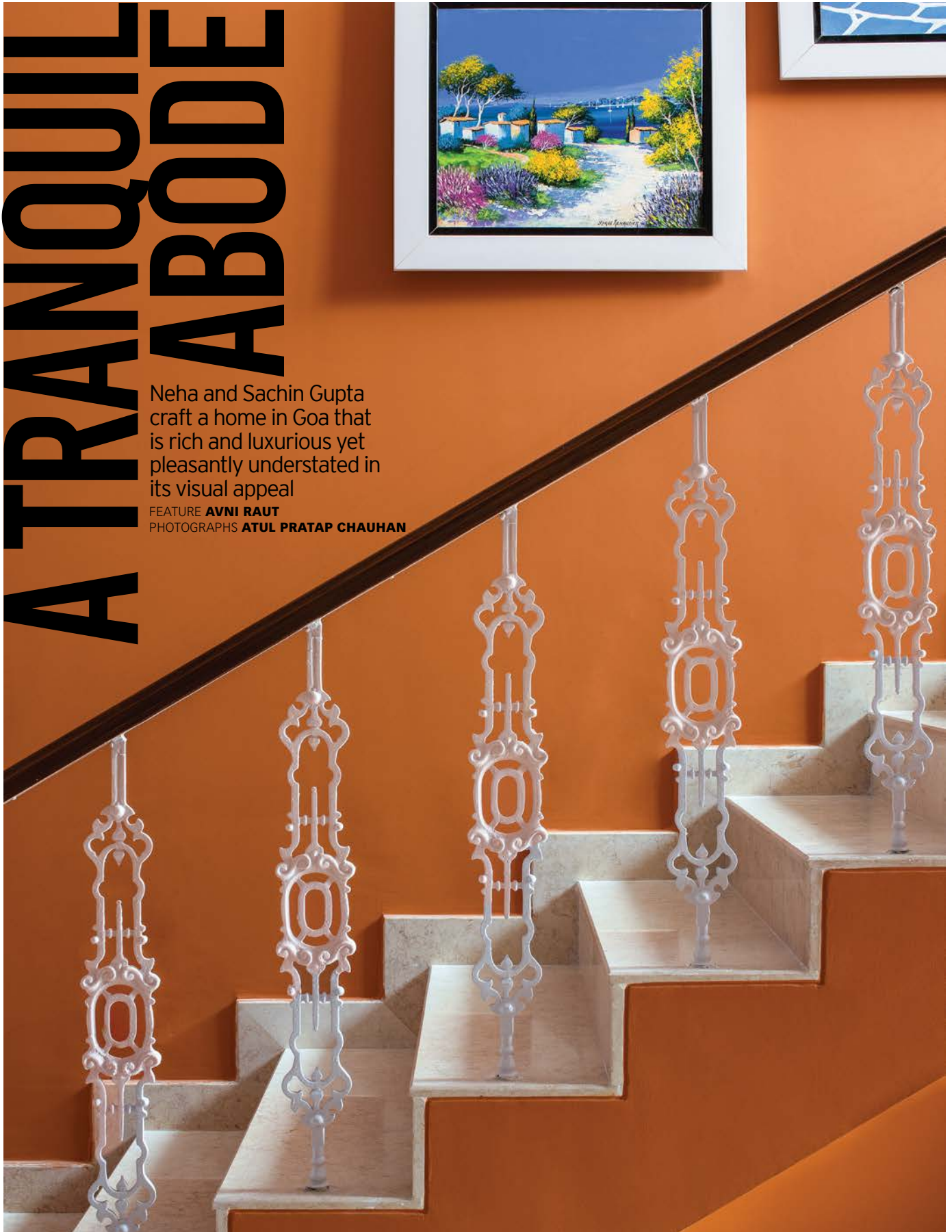
The layout is planned in a way that spaces open up into other spaces, thereby creating dialogues between rooms but at the same time ensuring adequate demarcation. Priti’s vision was to transform multi-partitioned spaces with compromised rooms into a home with great expanse. She says, “We achieved this by opening the plan and providing views into other spaces, thereby allowing the full width and length of the house to be experienced.”



A TRANQUIL ABODE

Neha and Sachin Gupta craft a home in Goa that is rich and luxurious yet pleasantly understated in its visual appeal

FEATURE **AVNI RAUT**
PHOTOGRAPHS **ATUL PRATAP CHAUHAN**



The voluminous formal living room is a tastefully curated space that affords captivating views of the surrounding greenery and the sea beyond.





Decor elements that catch one's eye in the formal living room are the mosaic stone coffee table in blue and white, and the carved wooden panel right behind the TV unit (Top Left). A small dining area (Top right) occupies one corner and the mezzanine above (Bottom Right) serves as a play area for the children of this house.



“

We are proud maximalists and rarely think in terms of spare and minimal. But for this 8,000sqft beach house in Goa, we chose to let the expansive feeling of the sea take over, without veering excessively from our signature style.

— **Neha and Sachin Gupta**, Founders and Interior Designers, Beyond Designs



NEHA AND SACHIN GUPTA

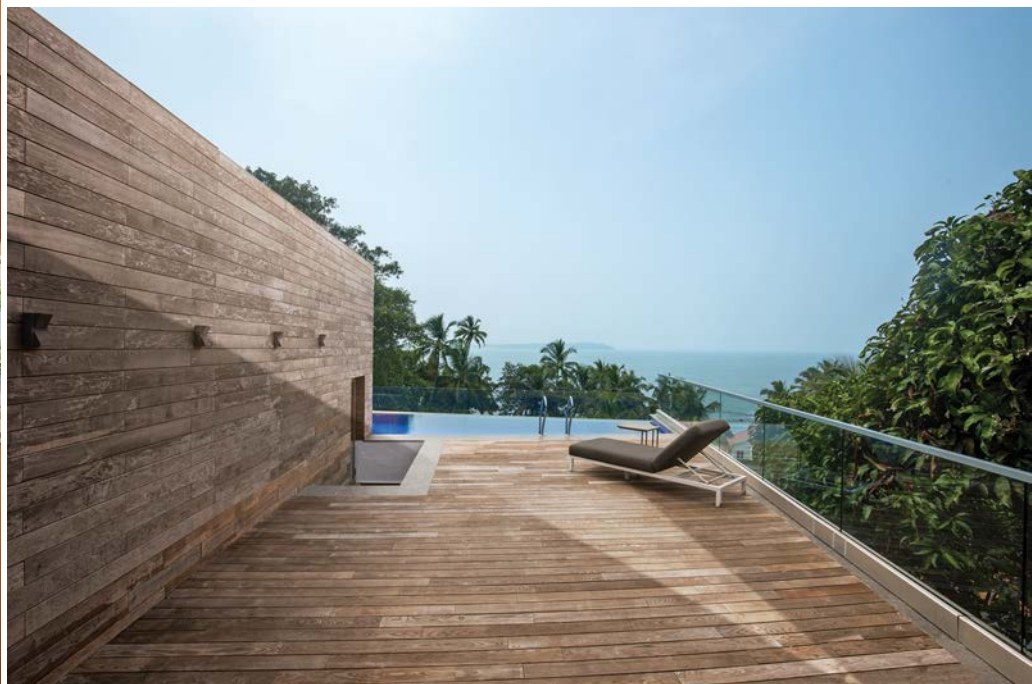
Founders and Interior Designers, Beyond Designs

Neha and Sachin Gupta of Beyond Designs are not ones to shy away from making bold design statements. Working with diverse styles and incorporating aesthetics from around the world, their projects are defined by richly layered narratives. Weaving in their signature style, they excel in creating bespoke, luxury spaces and are also able to deftly adapt their maximalist approach to cater to the requirements and sensibilities of their clients.





For this home, the firm employs materials like marble, wood, cane and locally available pink and white stones, paired with a soothing colour scheme. The interiors also display a strong visual connect with the outdoors. Be it the common areas, circulation zones (staircase block) or the private spaces, expansive window panels neatly frame the scenic views that this location offers.





“We have used marble, wood, cane, locally available pink and white stones, and woven textiles. The colour scheme is influenced by the sea and the beach – lots of white and blue, and some earthy and sandy tones.”

— **Neha and Sachin Gupta**, Founders and Interior Designers, Beyond Designs

Suffused with a sense of quiet luxury is this 8,000sqft, four-storey bungalow in North Goa that overlooks Coco beach. Neha and Sachin Gupta of Beyond Designs, known for their maximalist aesthetic sensibilities, have thoughtfully crafted the interiors to reflect their signature style but have adopted a slightly restrained design approach keeping in mind the context of the place. “The serene Coco beach, which the bungalow faces, was our inspiration for the residence’s pared down tone that ideally matches its geographical context. We let the expansive sea view dictate our choice of materials, colours and textures,” says the duo.

Patterned furnishings and textured surfaces rendered in soothing hues largely govern the interior aesthetics. “The home combines hints of classical style with the contemporary, while also adding a Goan-Portuguese flavour,” they say. Sizeable glass panels that wrap around the structure maximize the outdoor views of the surrounding greenery and the sea beyond, forming a rather picturesque backdrop for the rooms. Most of the furniture, accessories and lighting fixtures incorporated here have been custom made at Beyond Designs, with the carpets sourced from The Carpet Cellar. The home is also dotted with many family photographs and artworks. While some of the artworks have been customised by the brand, the others have been picked up by the owners on their travels.

Half of the stilt area has been designed to accommodate a dining room, a bar lounge and a courtyard. The double-height formal living room on one of the upper floors, embodies a visually arresting quality owing to its scale and full-height windows that grant stunning views of the sea. At the other end of the room is a smaller dining space, and the mezzanine above - accessible via a spiral staircase - serves as a play area for the kids. Spread across the different levels are the pristinely furnished bedrooms, with balconies; a warm, cosy aura sweeps across these private spaces. The ensuite bathrooms are spacious and open up into their own balconies, one of which has been equipped with an outdoor bathtub, having ensured privacy from the surroundings. The uppermost level hosts a wooden deck and an infinity pool - a breezy space that is ideal to unwind.

“It took us 9 months to finish the project; it proved to be one of the hardest because of the constant rain and heavy moisture in the air. Of course, it was all worth it as the owners loved the ethereal interiors,” concludes the duo. **GH**



AN ENGAGING VISUAL NARRATIVE

Disha Bhavsar and Shivani Ajmera of Quirk Studio weave their magic in this Mumbai apartment to create a quaint, blissful space for a multigenerational family

FEATURE **AVNI RAUT** PHOTOGRAPHS **KUBER SHAH**



In the interiors, wood, marble, cane, concrete finishes and brass accents are tactfully juxtaposed in varying combinations, effecting an understated visual appeal. Right from the choice of marble, the fluted effect carved out on wood, subtle moulding details, integration of patterns and motifs, and vintage touches, to carefully curated furniture pieces, every design detail adds visibly to the larger narrative.





DISHA BHAVSAR AND SHIVANI AJMERA

Principal Designers and Co-Founders, Quirk Studio

Founders of Quirk Studio, Disha Bhavsar and Shivani Ajmera work in complete sync with each other on every project that they undertake. They bring their own expertise and individual ideologies to the table that further enriches the design process and its final outcome. With a pragmatic approach, an inclination towards experimentation, and a clear vision for each project, the duo has worked on and realised a number of residential and commercial spaces since the inception of their firm in 2013.



While the common areas are ideal for the family to congregate in and spend quality time together, the bedrooms are cosy spots to retreat to after a long day. These private zones are carefully designed keeping the occupant's personality in mind and integrating their preferences and requirements to a tee.



“

“Materiality dons an intrinsic role, dabbling in an intentional juxtaposition of finishes that manifest in versatile forms across the home.”

— Disha Bhavsar and Shivani Ajmera, Principal Designers and Co-Founders, Quirk Studio

This 1,950sqft apartment in Mumbai renders a pleasing vision of simplicity at first glance, but the intricacies of the design unfold bit by bit, allowing the materiality to come through markedly. Located near Bandra Kurla Complex, this home, belonging to a multigenerational family, has been thoughtfully crafted by Disha Bhavsar and Shivani Ajmera of Quirk Studio, in accordance with the brief provided by the clients. “The home needed to reflect the aura of the family and hold up a mirror to their way of being with sincerity. Timeless mid-century modern sensibilities cross paths with the neoteric to strike an equilibrium,” they say.

In the living and dining area, the light-toned marble floor is paired with clean white walls, while the expanse of the ceiling is embellished with mouldings. A candelabra-style chandelier discreetly adds an element of drama while monochrome family photographs on the wall induce a nostalgic quality. The space is furnished with a tasteful selection of furniture and patterned soft furnishings. A marble-top dining table, accompanied with dual-toned chairs, is positioned against the backdrop of a built-in unit with fluted shutters and a marble-lined niche. The kitchen comes together as a subtle amalgamation of colours and patterns. The cabinets are rendered in either wooden finishes or a calming aquamarine hue, grey stone is chosen for the backsplash and the countertop, while floral motifs dominate the flooring.

The den furnishes a calming vibe. “The wooden flooring conjures a snug cottage-esque ambience while the cool grey concrete finish sheathes the walls,” say Disha and Shivani. Each bedroom was designed to resonate with its respective owner, reflecting their preferences and certain aspects of their personality through different design gestures. In the daughter’s bedroom, her collection of art takes centre-stage while the bedroom belonging to the family’s matriarchal head, dipped in colours and floral patterns, is designed to reflect her vivacious and lively nature. On the other hand, a sense of calm descends over the master bedroom, with the colour blue - a favourite of the lady of the house - dominating the scheme alongside white and accents of wood.

“We started the project in the middle of the pandemic, including meeting our clients for the first time over a zoom call. That was an interesting aspect and different as it was partially conceptualised and executed in the lockdown which was quite challenging as well,” concludes the duo. **GH**



SHOPPING GUIDE

ABCD

Address Home www.addresshome.com

Anmol Creations Anju Kumar

Studio Anmol C-55A, South City 1,

Gurgaon – 122001 Mobile: 91-9810033305

Bageechawala www.bageechawala.com

Canvas 360 @canvas360ahmedabad

Chitrini @chitrini_handmade

www.chitrini.net

Coppice Furniture

www.coppicefurniture.com

Dash Square www.dashsquare.com

Donna Deli @donnadelibombay

EFGH

Ellementry www.ellementry.com

FabIndia www.fabindia.com

GharGhar www.gharghar.in

Hands www.handscarpets.com

IJKL

Inhabit www.inhabit.in

MNOP

Natuzzi www.natuzzi.com

Obeetee www.obeetee.in

Ochre at Home www.ochreathome.com

Orange Tree www.orangetree.in

QRST

Spacio www.spaciocollections.com

Sanjyt Singh www.sanjytsingh.com

Shalu Juneja @shalusim

Shani Furniture by Anil Shahi

www.shahifurnishers.com

Source Unlimited

www.sourcesunlimited.co.in

Tresorie @tresorieofficial

Tessera India www.tesseractindia.com

The House of Things

www.thehouseofthings.com

UVWXYZ

Visionnaire www.visionnaire-home.com



GoodHomes^{INDIA}