

HOME & DESIGN

A TIMES OF INDIA PUBLICATION

TRENDS

VOLUME 10 NO 6

ART DESIGN SPACES

CHARGED VOIDS

DEETEE HOME

JETSONS

KLOVE

MAZE CONCEPT

DESIGN STUDIO

OPENIDEAS

ARCHITECTS

PORTAL 92

SANDILYA

THEUERKAUF

STEM

The age of NEW DESIGN

ALI BALDIWALA FORGES
A PATH ON HIS OWN TERMS



FORM AND FUNCTION

06

DESIGN IN CONTEXT

Handpicked products
that blur the lines
between art and
functionality



ON THE COVER

Ali Baldiwala
Image: Rahul Jhangiani
Style: Akshay Tyagi
HMU: Santosh Shilavat
Location: Mukesh Mills
Wardrobe: Shirt Aroka

CONTENTS



10

BUILDING CONVERSATIONS

10 COVER STORY

An artist in the broad sense of the word, Ali Baldiwala is a sum of many creative pursuits. From the complex design work he undertakes to the intricate collaborations he spearheads, the interiors designer is at the forefront of heralding a new lexicon in Indian design...one that's inclusive and potent

SCULPTED SPACES Residential

18 VOLUMES AT PLAY

OpenIdeas Architects plays with scale and expanse to design this Ahmedabad home that is defined by its voluminous forms and bold silhouettes

24 FORGING CONNECTIONS

For this project in Muzaffarnagar, Uttar Pradesh, Portal 92 devises smart interventions that seek to unite two separate residences built alongside each other on the same plot of land

30 EXPRESSIONS FROM TWO WORLDS

Charged Voids' latest residential project represents India's traditional ways of living while paying homage to Chandigarh's modernist heritage

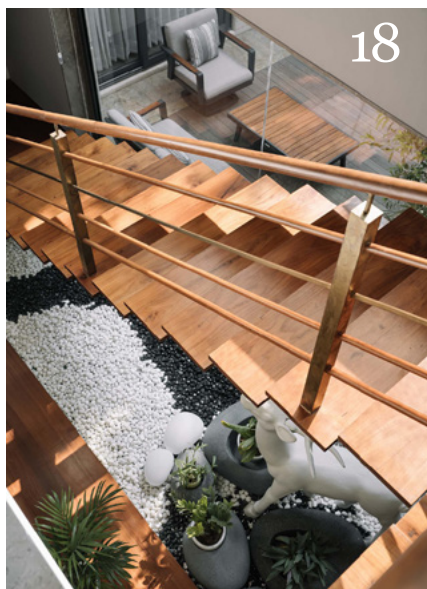
Commercial

34 IN A STATE OF CALM

Jetsons transforms a derelict expanse in Powai, Mumbai, into an office space that is well-organised, richly layered in materials and simple in style

38 EMBRACING A NEW IDENTITY

Maze Concept Design Studio repurposes an old Bengaluru villa – that reflects colonial architecture influences - into a restaurant with eclectic nuances and a homely vibe



18



38

HOME & DESIGN

TRENDS

High-end Indian and International Homes,
Extraordinary Architects & Designers, Best
in Product Designs, Celebrated Guest
Columnists, Latest Commercial Spaces,
New Properties and more. Your
authoritative guide to architecture and
design is now on the web.



FOLLOW US ON

f Home & Design TRENDS
@ trendsmagind
TrendsMagIndia

E-MAGS AVAILABLE ON



CHIEF EXECUTIVE OFFICER
DEEPAK LAMBA

CHIEF BUSINESS OFFICER
SUNITA QUADROS

EDITOR IN CHIEF
RONITAA ITALIA

Managing Editor	Avril Noel D'Souza
Associate Editor	Neerja Kapadia
Assistant Editor	Vanita Arora
Content Producer	Avni Raut
Associate Art Director	Shalaka Shinde
Assistant Art Director and Stylist	Anushree Kumar
Department Coordinator	Shayli Korgaonkar
Vice President Marketing	Vidyut Patra
Senior Brand Manager	Chandni Chopra
Chief Financial Officer	Subramaniam S.
Head Human Resources	Meghna Puthawala
Corporate Strategy and	Ritika Masand
Subscriptions Lead	

BRAND SOLUTIONS

SALES HEAD
SHRUTISH MAHARAJ

WEST Mumbai Vice President - Brand Solutions Gautam Chopra - 9820181757 gautam.chopra@wwm.co.in	EAST Assistant Vice President Alka Kakar - 9830331780 alka.kakar@wwm.co.in
Pune Senior Manager - Brand Solutions Aditi Shrivastava - 9960163182 aditi.shrivastava@wwm.co.in	NORTH Senior Vice President Anjali Rathor anjali.rathor@wwm.co.in

SUBSCRIPTIONS

Asha Kulkarni, Manager Marketing
asha.kulkarni@wwm.co.in
Call: 18001210005 (All India toll free number)

Senior Manager, Subscription
Sakshi Kate - sakshi.kate@timesgroup.com

For subscription, visit: mags.timesgroup.com/home-trends.html

SMS: TRNDSUB to 58888

Mail: subscriptions.wwm@wwm.co.in
Call: 18001210005 (All India toll free number)



Printed and published by Sunil Dad for and on behalf of Worldwide Media Pvt. Ltd. The Times of India Building, 4th floor, Dr. D. N. Road, Mumbai 400001 and printed at Rajhans Enterprise, No. 134, 4th Main Road, Industrial Town, Rajajinagar, Bangalore 560044, India.

The publisher makes every effort to ensure that the magazine's contents are correct. However, we accept no responsibility for any errors or omissions. Unsolicited material, including photographs and transparencies, is submitted entirely at the owner's risk and the publisher accepts no responsibility for its loss or damage.

All material published in Home & Design Trends is protected by copyright and unauthorized reproduction in part or full is forbidden.

CIN: U22120MH2003PTC142239

EDITOR'S NOTE



Of late, I have been fascinated with vantage points. Perspective, basically, and how it changes everything. A glass that is half empty becomes half full; an oval is seen moonlighting as a circle, colours appear mercurial, scale and dimensions shift, sizes change...get the drift?

Perspective plays a huge role when it comes to design in any case. What I've begun to appreciate about it is its relevance in recent times. I love how, as designers on a micro level, we're all mighty preoccupied with the law of relativity. Because if you aren't relevant, then why are you here? That makes you essentially ineffective. And so, the vantage point that makes you (appear) functional and effective is really, really important.

This brings me back to something else that I'm perpetually preoccupied with – the question of choice. It's a fundamental freedom. I choose to live a certain way. I also have the choice to change the way I live. What I choose is relevant to me. Ergo, it's my perspective that renders something as valuable. And that's exactly why, more than the thing itself, my perspective is important to me. The same way as yours should be to you. Because at the end of the day, you choose what stays relevant to you. It's your life, by your design.

A handwritten signature in cursive script, reading 'Ronitaa'.

Ronitaa R. Italia
Editor in Chief

DESIGN IN CONTEXT

*Handpicked products that blur the
lines between art and functionality*

Text **VANITA ARORA**

FRAGMENTS OF HOME

Carefully handmade from recycled aluminium by skilled craftsmen, Terrace is a part of Fragments of Home, a limited edition series created by Stem. It exhibits extracts of architectural elements of a home and showcases the beauty of craftsmanship. This particular sculpture refers to the Terrace or Barsati of a home. The dimensions of this sculpture are W145 x D220 x H90 mm and its net weight is 4.4kg. ►





NATURE'S CHILD

Born and raised in rural Kerala, artist Sandilya Theuerkauf always realised the value of working with his hands, creating designs using natural materials, and connecting with his surroundings. These pieces were created by using the bark from dead trees. With these simple assemblages, he engages the audience with the natural world using materials he collects from his walks, like branches, thorns, stones, or bark. His creations symbolise the celebration of the materials and their features while retaining the quality and rawness of the materials used. Sandilya's work is available at KYNKYN, Bengaluru. ►

SWINGING AWAY

Making it the perfect spot for children and adults alike, the Bahama indoor swing by DeeTee Home is unique in expression and is handcrafted with metal and cane. Contemporary and timeless in design, the swing adds a bit of whimsy to a space and is an offbeat way to generate interest in any nook. ►





AS TOTEMS GO

Designed by Klove as symbol of strength, the Totem of Protection is a testament to the Laws of Sacred Geometry that represents how time maintains harmonious order by being naturally balanced and symmetrical. An architecturally created lighting installation, the Totem is proportionately structured and is made of glass and metal. **H&DT**

GROWING INTO HIS OWN

An artist in the broad sense of the word, Ali Baldiwala is a sum of many creative pursuits. From the complex design work he undertakes to the intricate collaborations he spearheads, the interiors designer is at the forefront of heralding a new lexicon in Indian design...one that's inclusive and potent

Text AVRIL NOEL D'SOUZA *Image* RAHUL JHANGIANI
Style AKSHAY TYAGI *HMU* SANTOSH SHILAVAT
Location MUKESH MILLS

Ali Baldiwala posing in 'Quirk Box', a home he considers to be a breakthrough project in his design evolution.

Being a designer was a pre-destined path for Ali Baldiwala. His father, the iconic Bakir Baldiwala, is considered a leader in the Indian world of interiors and spatial planning and for everyone, Ali was going to become a designer. But Ali had different plans. Bright, enthusiastic, and talented, Ali saw the world and its endless possibilities and knew the creative world was for him but wanted to step into his own as an actor or a graphic designer. In pursuit of these passions, Ali has successfully dabbled in cinema and is constantly flexing and updating his knowledge of graphic design. If not for a designer, he would've excelled in either path. But, having done what he wished to do and knowing that he would do a good job at it too, Ali inadvertently decided to pursue design. "Post my college years, I worked under Phiroza Neterwala for two years. From then to now, she continues to be my guru and is an inspiration. Anyone who knows me knows I have learned a lot from her and deeply admire her eye for detail."

Surrounding himself with excellence, Ali has steadfastly explored what makes up the hallmarks of classic design all while making it his own.

//

I love the current world of Indian design where designers are not aping the west or making luxury homes simply by placing Italian furniture. Today, design ateliers look to local crafts to create unique addresses.

— Ali Baldiwala, Partner, Baldiwala Edge



IMAGE: TALIB CHITRAWALA
PROJECT: QUIRK BOX
HELMET: ESSAIEES



IMAGES TALIB CHITALWALA

//

I have spent years stressing about the future and it only leads to anxious thoughts. I'm learning to live in the present and make the best of what's in hand. While I like to plan myself, I am no longer rigid.

– Ali Baldiwalla, Partner, Baldiwalla Edge

DISCUSSING HIS SIGNATURE STYLE

Over the years, Ali has threaded a design path that evinces a sense of grandeur whilst rooting itself in a simple, humble narrative. This meld of greatness with simplicity is synonymous with Ali. Over the next few pages, we shine the spotlight on some iconic residential and commercial projects that have grabbed our attention over the years.

The 'Mysiga Homu', as Ali titles it, has a simple construction, with a simpler palette. At its core, this Mumbai home meets the requirements of its owners - that of a simple space with a clutter-free orientation. Ali has transformed this unassuming brief into an inspired approach to modern-day

living. He has reinterpreted what simple living means! Well, a delicate palette of textured wood, powder colours and an exacting curation of artisanal pieces of furniture, accessories and furnishings, all by Indian brands and designers, elevate the brief from simple to inspired. Talking about this 1,000sqft home, Ali says, "We have designed a home that celebrates simplicity, the marriage of wabi-sabi (a Japanese philosophy that embraces the beauty in imperfections) and Hygge decor (a Danish term that refers to a sense of comfort).

Another reason we love this two-bedroom apartment is that it's 100%, made in India, well,



There is a method to the madness, and there is an inherent madness in our design method. We like to retain the simplicity of a brief, while elevating the overall effect to something inspired.

– Ali Baldiwala, Partner, Baldiwala Edge



IMAGES: TALIB CHITALWALA
STYLE: SAMIR WADEKAR

almost. Ali stops us in our track and points to the Terho Lamps above the dining from Mater Design (Poland). “We met Indian vendors and craftsmen who’ve done full justice to the project. Except for the lamps, everything is executed in India.” This project has exposed Ali and his team to a world of Indian artisans and craftsmen. The architect tells us he is now deeply fascinated with the “made in India” movement.

Continuing from our vein of thought, we ask Ali to give us a glimpse into a project that he considers integral to his career trajectory. “‘Quirk Box’, a small home in SoBo is a project that I consider to be my breakthrough project. This residence introduced me to my inner love for colour and all things quirky. For this project, we literally went out of the box and conceptualised the small home into a quirky square.” Ali goes on to add, “This home sparks curiosity. It is an out-and-out unconventional 1,000sqft home.

The client’s request was simple, to turn the two-BHK space into a home with an eclectic aesthetic while maximising the area. It’s not very often that one comes across a home one can truly refer to as ‘quirky’, as the moniker suggests. Bright colours mixed with quirky finds and tailor-made embellishments is something we haven’t envisaged and executed at Baldiwala Edge before. Keeping the typical design elements and materials at bay, the home boasts a rainbow of colours, intriguing artsy pieces and design-savvy furniture all highly inspired by the Memphis style that uplifts the look and feel, adding a touch of luxury and a sense of homeliness. Setting aside from the main concept of the whole house, the guest bedroom is inspired by the art and culture of Sidhpur, my client’s hometown. Each room has a different story to tell and stays true to the concept of being quirky. Situated in a SoBo building, the one-of-a-kind apartment exudes creativity. Unlike other home

The 1,000sqft ‘Mysiga Homu’ in South Mumbai, is a functional and stylish residence. The aluminium windows by Geeta Aluminium are built in a way that ensures a system that blocks out dust, noise and water.



IMAGES: TALIB CHITRAWALA
STYLE: SAMIR WADEGAR

makeovers and homeowners, the clients desired a home which would reflect their personal aesthetic and we translated that into a bright space with corners bursting in colour.”

Next, is a project that we recently featured in Home and Design TRENDS, recently. For the ‘Winner’s Perch’, a Mumbai-based workspace, Ali revisits the restful narrative of Zen and marries the Japanese aesthetics with finely fashioned forms and elevates the idea of function. The designer weaves an aesthetic narrative on the 39th floor of Mumbai’s Kohinoor Square for a 3,600sqft space which combines breath-taking sea-facing premises with spectacular city views from a height. Imbuing the interiors with the quintessential Baldiwalla edge, the designer creates a compelling office space that is open, airy, intentionally sparse, and sophisticated yet minimalistic. To match the tranquil outdoors, the design adopts zen-like Japanese aesthetics, in both material and layout, which exudes a sense of calm against the bustling environment, while also pulling the space together

in a neat, consistent narrative. Contemporary, the working space was designed to incorporate both utility and simplicity.

Function contributes to form and the cosy, minimalist vibe is created by a trifecta of stone-finished tile flooring, extensive use of wooden furniture, and art, accessories and plants that make the space exuberate lightness. On using design to create a thriving professional environment, Ali mentions that form literally followed function in designing the space. Aligning his design philosophy with the client’s vision, the space was orchestrated for free-flowing movement, transparency and establishing a visual connection to everything. Carefully placed lighting played a crucial role in accentuating the textures and the use of various natural materials, including stone, oakwood and texture paints in the office space. He goes on to reveal, “The design highlight of this office room is the Olympic torch display, a visual treat, the rhythmic pattern of famed torches is created in a corrugated format with vertical panels



I pride myself on my unapologetic use of colours and my experiments with new materials. Each project becomes special as the material play stands out. I love bringing different eras of design together.

– Ali Baldiwala, Partner, Baldiwala Edge



IMAGE: TALIB CHITAWALA
STYLE: SAMIR VADEKAR

in MDF and duly finished in texture paint.” It’s a wonderful design where a brass rod is enclosed within the insides of the panels, attached with capping on the top as well as bottom, posing to hold the wooden shelves upon which each torch rests. These accents elevate the look of the torches. Attached to the shelf, the brass plating features engravings of each country’s name tags.

ON FORGING HIS OWN IDENTITY

Growing up as Bakir Baldiwala’s offspring, exposed Ali to the best of Indian design. The living legend has four decades worth of experience and is known for crafting spaces with style and purpose. When Ali decided to pursue design, he was well aware of the uphill job that lay ahead and the consequent comparisons that would be made. If not on this home-turf, Ali’s mentor, Phiroza is another icon that could have overwhelmed his voice. Rather than worrying about getting lost in

their afterglow, Ali worked hard at learning from the best and finetuning his design perspective. “I wanted to learn better. Had I joined my dad’s firm right out of design college, I would have been treated like a boss.” Working with Phiroza provided the young designer with a sense of anonymity that allowed him to grow at his pace. When he finally joined the family firm, Ali stayed clear of the larger projects his father would take on. Instead, Ali focused on smaller jobs and evolved from thereon. Today, Ali has a burgeoning clientele different from his father’s. WWHe reminiscences, “Sometimes it’s important to pat yourself, but don’t let that reach your head. I am still learning and there is a long way to go.”

THE AGE OF COLLABORATION

For Ali, the future rests on collaborating with talent that can lend more value to a project that he and his team are working on. “We like

For ‘Winner’s Perch’ (above), his latest commercial space, Ali orchestrated free flowing movement by establishing a visual connection that allows everyone to see everything that is happening around the space.



IMAGES TALIB CHITAWALA
STYLE SAVIR WADEKAR

collaborating with artists and different designers from in and around the community. I believe that each craft/art has specialists, and one must look up to them to create something they are trained and better at. The ‘I know it all attitude’ is passé. Collaboration is the way forward. Our experience with each of our collaborators has been amazing and we find those who match our passion levels and have similar visions for the project in hand. Vibes are the most important and to collaborate it’s extremely crucial to be on the same wavelength and share similar energies. We work with different agencies and specialists for different projects depending on the concept and what the design demands. If one hires an expert one needs to fully trust them and their process. We set a design language for them depending on the concept we are working on and then allow them to create it. This allows different minds to come together, and the project is eventually the winner with versatile creatives and unlimited ideas. The suggestions are well taken, and the idea of collaboration stays true to its essence.”

ELEMENTS OF DESIGN

“Wood as a material is something we at Baldiwala Edge love using. For ‘Mysiga Homu’ and the ‘Winner’s Perch’ we collaborated with Wood’n Design and Bram Woodcrafting studios respectively. Working with them taught us about



BUILDING CONVERSATIONS | *Cover Story*

Award-winning interiors designer, Ali Baldiwala thrives on creative discourse and pushing the boundaries when it comes to spatial planning.

wood as a material, about different joineries, stains that are possible, and other minute details in executing designs with different woods. They first wanted to understand the kind of product we need, and what would go with our concepts. Our inputs helped the studios execute products that were technically sound and efficiently created. Aside from wood, custom-made art walls and murals are something we work on extensively in our projects as they add extra drama. We've worked with local artists like Zaworks, Kanak Nanda and Ruchita Madhok. Instead of doing just wallpapers, this feels more personal. For Ashdeen, a fashion design studio and store in Mumbai, we worked with metal to create artistic flowers in copper, candle stands in copper, brass sheet cladding and main door handles, and more. We loved curating this range of designs in metal. In all our projects, we have a touch of Rasika, an artist who works with metal only. For the 'Quirk Box', we collaborated with Arjun Rathi for the lighting. Based on our requirement, Arjun designed lights that were inspired by the forms of Channapatna, a highly-skilled toy-making craft. We've collaborated with Arjun on other projects as well."

PARTING WORDS

"Today, designers are unabashed and unapologetic. There is space for everybody, and every designer has their own style and clientele. I love that amidst the competition we all face there is harmony and comradery. This is possible because each one is secured and has enough work for themselves." Ali leaves us with an interesting introspective note, and we are sure it will inspire many, "There are no rules in design, if you want to be bold and out of the box you've got to break boundaries to make it happen." The fearless young designer doesn't just talk, he walks the walk. Just like his father who broke away from the family business of manufacturing buckets, Ali is set on infusing a new vigour into the next chapter of great design at Baldiwala Edge. **H&DT**



Whether it's an interiors designer, architect, fashion designer, textile designer, all are not restricting themselves to only that particular vertical. Everyone is exploring ways to be more than just beautiful.

— Ali Baldiwala, Partner, Baldiwala Edge



IMAGES: TALIB CHITAWALA
PROJECT: EYE IN THE SKY
STYLE: SAMIR WADEKAR

SCULPTED SPACES | *Residential*

VOLUMES AT PLAY

OpenIdeas Architects plays with scale and expanse to design this Ahmedabad home that is defined by its voluminous forms and bold silhouettes

Text AVNI RAUT Images ISHITA SITWALA

STYLE SAMIR WADEKAR



SCULPTED SPACES | *Residential*

The house is surrounded by plentiful green pockets with internal spaces opening onto the landscaped gardens. Actual Organic was brought on board as the landscape design firm for this project.



“Bringing in the greens and with it the warmth that natural materials evoke, Verde Home intends to blur the boundary between the inside and the outside.”

– Monarch Champaneri, Nilesh Gajera and Niralee Champaneri, *Co-founders and Principal Architects, OpenIdeas Architects*





The team employed clean-lined elements and crisp finishes, imbuing the interiors with understated luxury. Subtle yet elegant in their appeal, each of the decor pieces holds its own while complementing the architectural attributes of the home.



“A rather simple brief prompted the design for a home that would be aligned with the principles of Vastu Shastra and yet be expressive of the present.”

– Monarch Champaneri, Nilesh Gajera and Niralee Champaneri,
Co-founders and Principal Architects, OpenIdeas Architects

SCULPTED SPACES | *Residential*



Materials like wood and marble govern the interior palette and are extensively used in different applications and treatments, leading to consistency in the visual language without becoming monotonous.

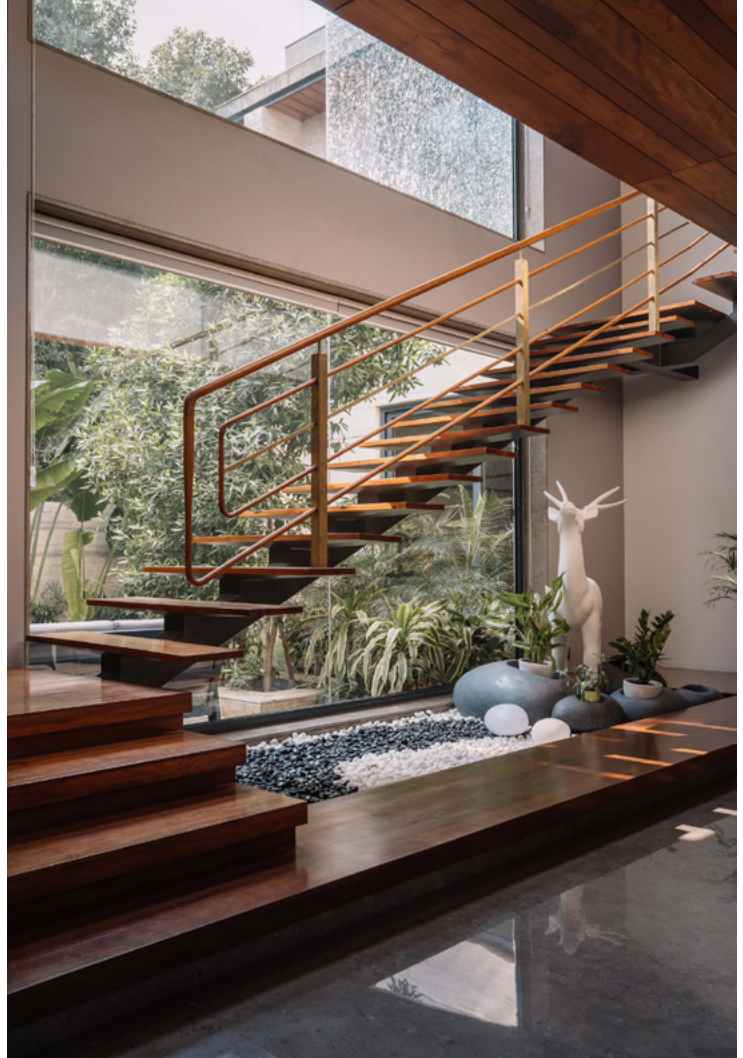


SCULPTED SPACES | *Residential*



The residence also holds recreational and leisure spaces on the upper level, including a gym and a home theatre.

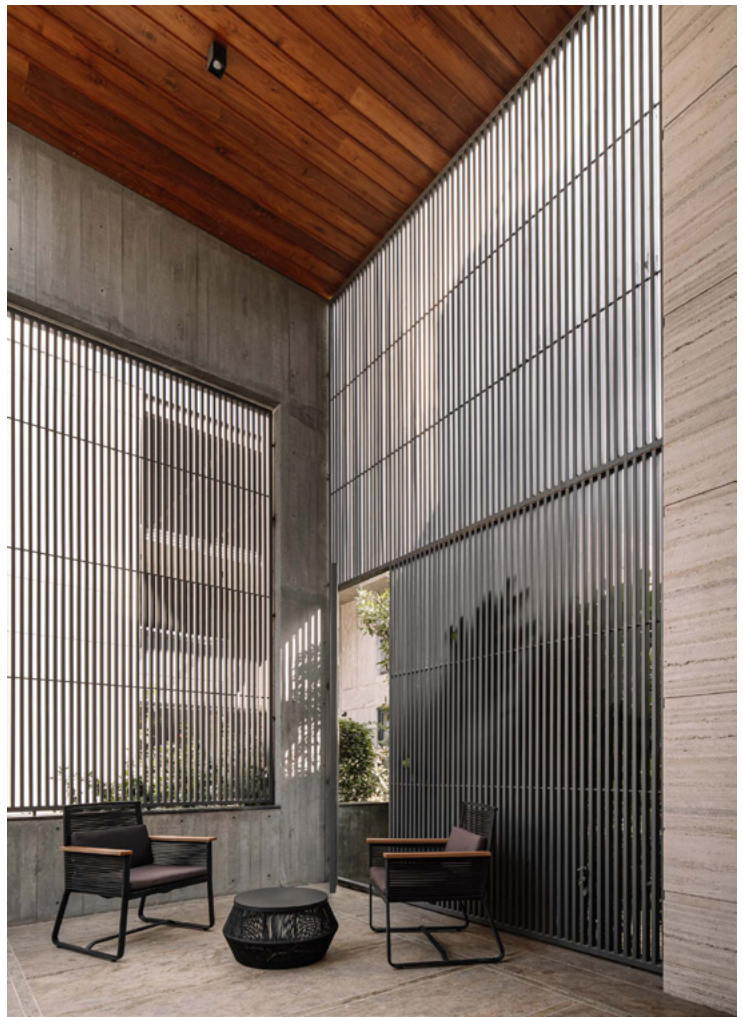




OPEN Ideas Architects crafts a 6,350sqft home in Ahmedabad with a focus on creating a strong inside-outside relationship and a luxe yet understated design narrative. “A rather simple brief prompted the design for a home that would be aligned with the principles of Vastu Shastra and yet be expressive of the present,” say the architects.

The built form is an interplay of lofty volumes and changing scales that heighten one’s perception of the space. Each room flows into another with ease, yielding smooth spatial transitions. A material palette comprising Travertine, wood, concrete and steel helps shape the visual identity of the residence, while for the interiors, the decor pieces are carefully curated and befit the imposing volumes they adorn.

The functions are split across two levels. The living room, placed near the foyer, is flanked by a linear stretch of water body on two sides, beyond which lies the garden. The dining area leads into the double-height family sitting, adjoining which is the staircase that connects to the upper floor and overlooks the outdoor court. The ground floor also includes the kitchen, puja room and an office. The bedrooms on both levels open onto decks and balconies, granting pleasant views of the landscaped outdoors. **H&DT**



SCULPTED SPACES | *Residential*

FORGING CONNECTIONS

*For this project in Muzaffarnagar, Uttar Pradesh, **Portal 92** devises smart interventions that seek to unite two separate residences built alongside each other on the same plot of land*

Text AVNI RAUT Images NIVEDITAA GUPTA



To give the impression of the two structures being a unified entity and make the individual entry points fairly inconspicuous, changes were made to the façade, including the integration of wooden louvers and the stone volume with linear slits that allow for plants to peek through and adorn the structure.



"Much like the act of hemming, The Hem House comprises of spaces that are sewn and stitched into each other – to culminate into a fabric of oneness."

– Aanchal Sawhney and Sagar Goyal, Co-founders and Principal Architects, Portal 92



"The entertainment area is defined by all things grey, enriched by raw finishes of chiseled stone and rough grains of the Indian Basalt stone. Complementing the greys are brass accents, dapples of sunlight, woven metal meshes and fluted glass members."

– Aanchal Sawhney and Sagar Goyal, Co-founders and Principal Architects, Portal 92



The entertainment area comprises a raised indoor space with a glass skylight, a gaming lounge cum seating zone, a dining area, bar and a powder room. The dining area, partially veiled by a finely crafted screen, further leads to an outdoor seating area.



"The recreational sit-out area is furnished with volumes carved out and juxtaposed against the site profile. Adorned by natural Thermo-Ash wood and soft limestone, the space provides a functional, yet calming retreat offering restitution from the harsh sun."

– Aanchal Sawhney and Sagar Goyal, Co-founders and Principal Architects, Portal 92



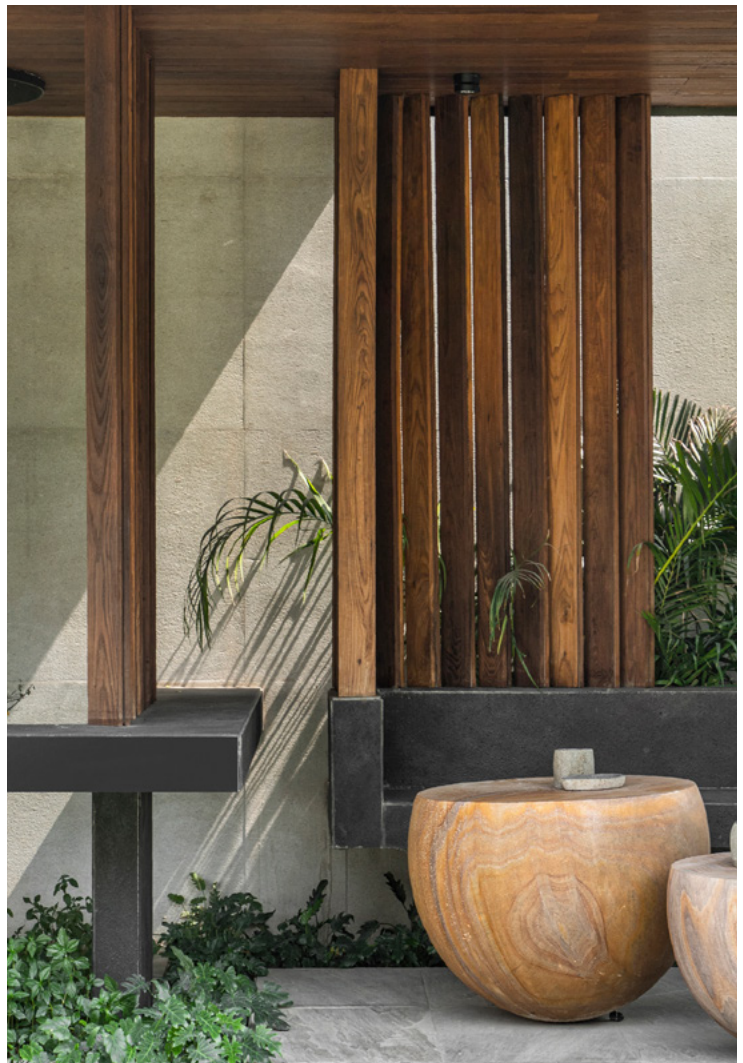
The firm's vision is realised through neatly executed details that give rise to spaces with a flawless aesthetic appeal and a distinct charm.



THIS recently completed refurbishment and redevelopment project by Portal 92 in Muzaffarnagar, Uttar Pradesh, aimed at uniting what were two separate houses built on a sprawling site measuring 36,597sqft. “The former establishment presented itself as two asymmetrical residential structures, that required stitching up to create an illusion of oneness and our design intent was to ‘hem’ the two houses together,” explain the architects Aanchal Sawhney and Sagar Goyal. This conceptual idea translated into certain formal gestures and spatial interventions that now render the two homes as a singular entity.

A common entertainment area was introduced to spatially tie together the two detached built forms. Flaunting a contemporary aesthetic, the interiors are immaculately articulated using clean, bold forms and sculptural elements, with a pronounced sense of materiality taking centre-stage.

The team also modified the façade, attributing it with some semblance of symmetry from its previous composition through smart design moves that also helped make the main entry points to the two homes less conspicuous. “The Hem house serves as a face-lift of its former self with revived meaning, soulfully reshaping the way the structures and surfaces of the residence cohabitate – from the façade’s massive volumes to its ambitious details in modest materials, giving it a new lease of life,” concludes the duo. **H&DT**



EXPRESSIONS FROM TWO WORLDS

***Charged Voids'** latest residential project represents India's traditional ways of living while paying homage to Chandigarh's modernist heritage*

Text NEERJA KAPADIA *Images* JAVIER CALLEJAS SEVILLA



(THIS PAGE) The house greets visitors with a curved concrete roof, a reinterpretation of Le Corbusier's 1952 proposal for the Governor's Palace. (FACING PAGE) At eye level, a glass-encased open layout comes into view, showcasing an overlap between several interconnected volumes as well as the interaction between separate floors.



"The design has been driven by intersecting axes...the major axis is planned as an anchor for central circulation while the minor axis connects to the landscaped courtyards, complying with a highly cohesive lifestyle."

– Aman Aggarwal, Founder, Charged Voids



SCULPTED SPACES | *Residential*

Locally sourced brick and Le Corbusier's signature cast-in-situ concrete have been used to build Residence 1065, drawing inspiration from contextually prevalent construction practices as well as the modernist vocabulary revolutionised by him.





DESIGNED for a multi-generational family, Residence 1065 is an embodiment of the Congrès Internationaux d'Architecture Moderne's (CIAM) principals of modern architecture. Aman Aggarwal of Charged Voids creates an open plan with facades that appear to float. He fuses traditional space planning and modern aesthetics with an abundance of daylight ingress. With spaces unfolding in layers as one progresses from public to private areas, the common zones are enclosed in glazing, creating dialogue with open areas surrounding them.

Occupying the centre, the kitchen is connected to the courtyard with a collapsible partition. An all-white prayer room with a double-height turret permits natural light through sharp slits in its curved walls. The upper floor comprises of two rooms for children and one guest room.

Implementation of terrace gardens and multiple courtyards allows the interior spaces and exteriors to coalesce. The private rooms open into verandas with tall sun breakers that also form the façade, granting access to the outdoors, yet maintaining privacy.

Aman imbibes techniques that are historically important to Chandigarh, aspiring to exhibit Le Corbusier's philosophies, not only in the symbolism of modernism, but also in the architectural expression, that drives a large part of the design intent. **H&DT**



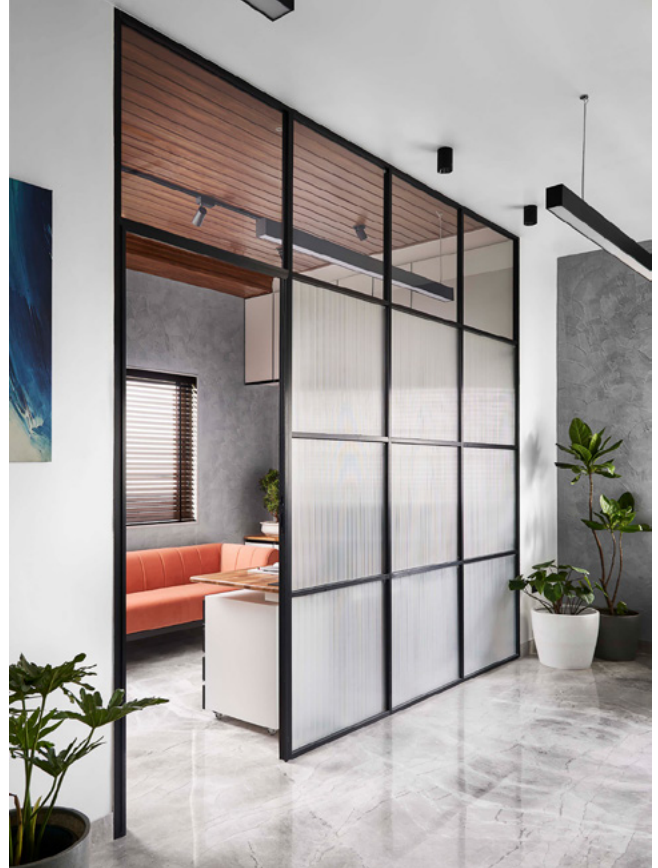
SCULPTED SPACES | *Commercial*

IN A STATE OF CALM

Jetsons transforms a derelict expanse in Powai, Mumbai, into an office space that is well-organised, richly layered in materials and simple in style

Text **AVRIL NOEL D'SOUZA**
Images **YADNYESH JOSHI**





"The main idea was to ensure the harmony of materials. We wanted to highlight the versatility of surfaces and decided to pair them with a neutral monochromatic colour scheme. This drew out their inherent lushness and colluded with our plan to create a sophisticated space."

– Jeet Soneji, *Founder, Jetsons*



"From the initial stage of design, we planned on making a grid layout for the whole office. We wanted to orchestrate a flow that would take a person from the common areas to a semi-public one and finally to the more private zones."

– Jeet Soneji, *Founder, Jetsons*





The use of different glass surfaces in the form of partition screens and marble in different colour schemes are the show-stopping elements of this office space.

LOCATED on the 18th floor of a business park in Powai, this office offers views of the greens of Thane on one side and the cityscape of Navi-Mumbai on the other side. When the clients first approached Jeet Soneji of Jetsons, they were firm on their requirement for a space with a simple tonality. From the colour scheme and materiality, the clients wanted to stay clear of excessive ornamentation and let the focus rest on a soothing vibe that enables a functional and thriving environment.

“When we first saw the office site, it was in a bad state. In response to our client’s requirement for a space that grew with their business, we maximised the utility of this office. We divided the space into grids that provide dedicated spaces for activities, desks for every employee and spill-out zones that brought people together,” says Jeet.

Along with Deval Shah and Deepali Bangera, the team at Jetsons have integrated the natural inflow of light into the plan. They employ the services of inherent elements like the orientation of the space, the high floor level and natural light to orchestrate a plan that is skilfully executed. Walls of glass bricks act as both partitions and vessels of light transfer, the monochromatic colour scheme and stated surfaces further help bounce light. While the styling is simple, these nuances have a dramatic effect. **H&DT**



EMBRACING A NEW IDENTITY

Maze Concept Design Studio
*repurposes an old Bengaluru villa –
that reflects colonial architecture
influences - into a restaurant with
eclectic nuances and a homely vibe*

Text AVNI RAUT Images ARJUN KRISHNA

**"The whole theme and vibe of
the space was set with natural
materials and hues of green in
all forms, reflected through the
paint colours, furniture, fabrics
as well as the murals."**

*– Priyanka MC and Koushik Ramesh, Founders, Maze
Concept Design Studio*





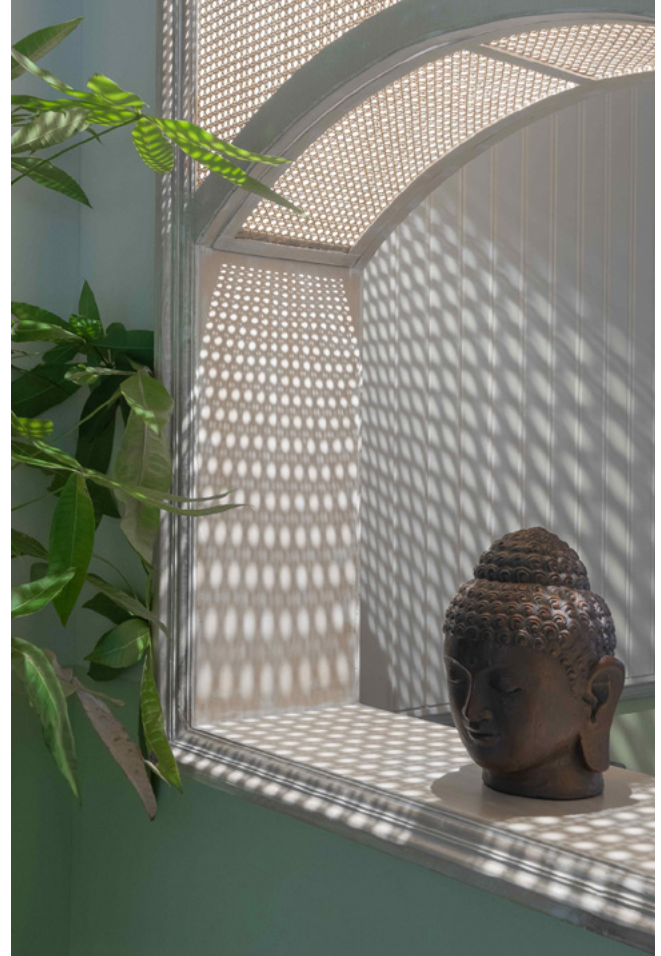
“Rattan weaves were extensively used in the project and are of traditional origin made by skilled local craftsmen. Using elements from Buddhism and representing the same through different murals and materials, along with the use of tropical plants, induces a sense of calmness and serenity.”

– Priyanka MC and Koushik Ramesh, *Founders, Maze Concept Design Studio*

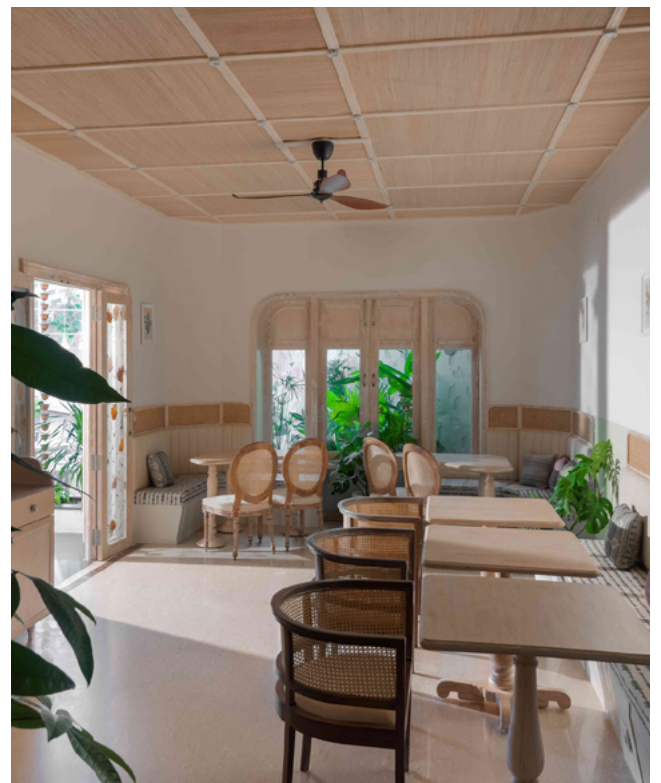
The furniture injects an eclectic touch into the restaurant decor. The outdoor seating comprises terrazzo tabletops, metal chairs, and cane sofas, with a few of the tables created as terrariums, evoking a sense of novelty and intrigue. The interiors reveal wood furniture in distressed finish.



SCULPTED SPACES | *Commercial*



Experimenting with artistic surface applications, one of the exterior walls is covered in flexi clay cladding sheets depicting a weave pattern and colour that gives an effect similar to that of jute, while another wall features a mural created by artist Rae Zachariah, presenting a lively, instagrammable backdrop. In the indoor seating area, the false ceiling has been constructed using a wooden grid frame within which banana fibre sheets are fixed. Rattan is used extensively, in the booth seating, service stations and even incorporated in the niches where it effects a play of light and shadow.





AN old Bengaluru villa inspired by colonial architecture lends itself as a characterful setting for Santé Spa Cuisine's new branch in Jayanagar. For this 3,500sqft Vastu-compliant restaurant, Maze Concept Design Studio devise a design language that focuses on a sustainable material palette and a nature-inspired colour scheme. The team infused Buddhist cultural influences with the overall narrative that's augmented by tactile and artistic surface treatments.

The open space in the front which initially accommodated the parking now hosts outdoor seating with a juice bar and a live pizza section. This transitions into the indoor area which is immersed in light hues and designed in line with the overarching theme. "The services, kitchen, and seating zones were completely separated. The setback was used to create a service pathway and different entries were provided for the staff moving in and out of the kitchen," say Priyanka MC and Koushik Ramesh.

The Mangalore roof tiles were coated in shades of green and white, allowing the space to blend in with its surroundings. Materials like cane, jute, clay sheets, wood, limestone, dried flowers and leaves, along with banana leaf fabrics have been juxtaposed and woven into evocative design gestures and applications that give the space a distinctly textural character. There is much to explore in every nook and corner of this restaurant which awes with its quaint simplicity. **H&DT**



HOME & DESIGN

TRENDS